

Transcriptome analysis of *Sonneratia caseolaris* seedlings under chilling stress

Yong Yang^{Equal first author, 1}, **Chunfang Zheng**^{Equal first author, 2}, **Cairong Zhong**³, **Tx Lu**¹, **Juma Gul**¹, **Xiang Jin**¹, **Ying Zhang**^{Corresp., 1}, **Qiang Liu**^{Corresp. 1}

¹ Ministry of Education Key Laboratory for Ecology of Tropical Islands, College of Life Sciences, Hainan Normal University, Haiou, China

² National and Local Joint Engineering Research Center of Ecological Treatment Technology for Urban Water Pollution, College of Life and Environmental Science, Wenzhou University, Wenzhou, Zhejiang, China

³ Hainan Academy of Forestry, Hainan Mangrove Research Institute, Haikou, Hainan, China

Corresponding Authors: Ying Zhang, Qiang Liu
Email address: Zhangyingred@yahoo.com, hnsylq@163.com

Sonneratia caseolaris is a native mangrove species found in China. It is fast growing and highly adaptable for mangrove afforestation, but suffered great damage by chilling event once introduced to high latitude area. To understand the response mechanisms under chilling stress, physiological and transcriptomic analyses were conducted. The relative electrolyte conductivity, malondialdehyde (MDA) content, soluble sugar content and soluble protein content increased significantly under chilling stress. This indicated that *S. caseolaris* suffered great damage and increased the levels of osmoprotectants in response to the chilling stress. Gene expression comparison analysis of *S. caseolaris* leaves after 6 h of chilling stress was performed at the transcriptional scale using RNA-Seq. A total of 168,473 unigenes and 3,706 differentially expressed genes (DEGs) were identified. GO and KEGG enrichment analyses showed that the DEGs were mainly involved in carbohydrate metabolism, antioxidant enzyme, plant hormone signal transduction, and transcription factors (TFs). Twelve genes associated with carbohydrate metabolism, antioxidant enzyme, phytohormones and TFs were selected for qRT-PCR verification, and they indicated that the transcriptome data were reliable. Our work provided a comprehensive review of the chilling response of *S. caseolaris* at both physiological and transcriptomic levels, which will prove useful for further studies on stress-responses in mangrove plants

Transcriptome Analysis of *Sonneratia caseolaris* Seedlings under Chilling Stress

Yong Yang^{1#}, Chunfang Zheng^{2#}, Cairong Zhong³, Tianxin Lu¹, Juma Gul¹, Xiang Jin¹, Ying Zhang^{1*}, Qiang Liu^{1*}

¹ Ministry of Education Key Laboratory for Ecology of Tropical Islands, College of Life Sciences, Hainan Normal University, Haikou, 571158, China

² National and Local Joint Engineering Research Center of Ecological Treatment Technology for Urban Water Pollution, College of Life and Environmental Science, Wenzhou University, Wenzhou, China

³Hainan Academy of Forestry, Hainan Mangrove Research Institute. Haikou, Hainan, 571100, China

Co-authors

Correspondence:

Prof. Ying Zhang and Qiang Liu

Zhangyingred@yahoo.com

liuq@hainnu.edu.cn

Abstract

Sonneratia caseolaris is a mangrove species native to China. It is fast growing and highly adaptable for mangrove afforestation, but injured by cold temperatures when grown at high latitudes. To understand the response mechanisms under chilling stress, we conducted physiological and transcriptomic analyses. The relative electrolyte conductivity, malondialdehyde (MDA) content, soluble sugar content and soluble protein content increased significantly under chilling stress. This indicated that *S. caseolaris* suffered damage and increased the levels of osmoprotectants in response to the chilling stress. We performed gene expression comparison analysis of *S. caseolaris* leaves after 6 h of chilling stress at the transcriptional scale using RNA-

Seq. A total of 168,473 unigenes and 3,706 differentially expressed genes (DEGs) were identified. GO and KEGG enrichment analyses showed that the DEGs were mainly involved in carbohydrate metabolism, antioxidant enzyme, plant hormone signal transduction, and transcription factors (TFs). Sixteen genes associated with carbohydrate metabolism, antioxidant enzyme, phytohormones and TFs were selected for qRT-PCR verification, and they indicated that the transcriptome data were reliable. This study reviewed the chilling response of *S. caseolaris* at both physiological and transcriptomic levels, and the results increase our understanding of stress-responses in mangrove plants.

Keywords: *Sonneratia caseolaris*; chilling stress; RNA-Seq; Differentially expressed genes

Introduction

The growth, development, and geographical distribution of plants are limited by temperatures in their habitat (Jin *et al.*, 2013). Low temperature stress can be divided into chilling stress ($<10^{\circ}\text{C}$) and freezing stress ($<0^{\circ}\text{C}$) (Zhou *et al.*, 2011). Plants have evolved a series of response mechanisms to adapt to low-temperature environments. These include regulation of gene expression and physiological and biochemical process changes that enhance cold resistance (Thomshow, 1999; Sung, *et al.*, 2003). These changes have been studied in model plants like *Arabidopsis thaliana* and some cereal crops ((Buti *et al.*, 2018; Zhang *et al.*, 2004; Roman *et al.*, 2012). Response mechanisms enhancing cold resistance mainly include signaling cascade, modification of the membrane lipid composition, accumulation of osmoprotectants, and increased activity of antioxidant enzymes to scavenge reactive oxygen species (ROS) (Theocharis *et al.* 2012; Nievola *et al.* 2017; Nakashima *et al.*, 2009). In addition, phytohormones such as auxin, abscisic acid (ABA), ethylene (ET), jasmonic acid (JA), salicylic acid(SA), gibberellin(GA), cytokinin(CK), and brassinosteroid (BR) and their signal transduction related genes also involved in regulating the gene expression in response to low-temperature stress (Peleg *et al.*, 2011). Exogenous ABA improved the cold tolerance of *Brassica napus* (He, *et al.*, 2019). Some members of WRKYs and MYBs transcription factors (TFs) regulated gene expression to participate in plant

cold resistance (An, *et al.*, 2020; Marè, *et al.*, 2004).

Mangroves are halophytic temperature sensitive shrubs or trees that grow in the intertidal areas of tropical and subtropical coasts. They include about 70 species from 20 plant families (Duke, 1992). Mangroves are important in carbon balancing, protecting coastlines and beaches from floods and storms, reducing soil erosion, and providing habitats and shelters for animals. They also provide food, wood, and medical compounds for humans (Duke, 1992; Tomlinson, 1999; Schmitt and Duke, 2015). Large areas of mangroves, however, have been converted to agriculture, aquaculture, and industrial use (Duke *et al.*, 2007; Robertsen and Alongi, 1992; Wang and Wang, 2007). There are approximately 22,684 ha of mangroves in China, which is 44% of the area existing in the 1950s (survey by State Forestry Administration in 2001). Since 2001, the government of China has focused on mangrove protection and restoration using conservation measures and large-scale afforestation in southeast China. The mangrove area in 2019 had increased to 29,000 ha. *Sonneratia caseolaris* is a mangrove species that is naturally distributed in the Hainan islands. Because of its rapid growth and adaptability, it was introduced to more northern and colder areas in China, such as Shenzhen and Leizhou in Guangdong Province, Qinzhou and Fangchenggang in Guangxi Province in 1994, where it grows well (Wang *et al.*, 2002; Zan *et al.*, 2003). *S. caseolaris* suffered substantial chilling injury in 2008, and there was heavy defoliation in all growing areas. All of the trees in Guangxi Province died. There was also significant defoliation of trees in native locations of Wenchang. Young seedlings were the most susceptible growth stage and suffered the great injury (Chen *et al.*, 2017). Mangrove species with greater tolerance to low temperature are needed for mangrove restoration. Understanding the molecular mechanism of *S. caseolaris* tolerance to chilling stress will be of great value in restoration efforts.

Next-generation sequencing (NGS) is an efficient and inexpensive method for collecting transcriptome data. It can be used for species that have not been sequenced. Based on RNA-Seq platforms, genome-scale transcriptome analyses have been used to identify the mechanism of stress response without whole-genome sequence information in different species (He *et al.*, 2015; Kumar *et al.*, 2015). Transcriptome analysis has been used to study adaptive mechanism of

mangroves, such as *Acanthus ilicifolius*, *Avicennia officinalis*, *Bruguiera gymnorhiza*, *Aegiceras corniculatum* and *Kandelia obovata* (Fang *et al.*, 2016, Krishnamurthy *et al.*, 2017, Su *et al.*, 2019, Yamanaka *et al.*, 2009; Yang *et al.*, 2015a; Yang *et al.*, 2015b). The chilling stress mechanisms of *S. caseolaris*, however, remains unknown.

To understand the mechanisms of *S. caseolaris* under chilling stress, we first measured the physiological changes in *S. caseolaris* under chilling stress. Then, we used RNA-seq for comparative analyses of *S. caseolaris* leaves between a control group (0 h, CK) and a chilling treated group (4°C 6 h, CT). The reliability of the transcriptome results was verified by real-time quantitative polymerase chain reaction (qRT-PCR). The data improved our understanding of the chilling response mechanism in *S. caseolaris* and identified potential cold tolerance gene targets in this, and other mangrove species.

MATERIALS AND METHODS

Plant materials and treatments

We collected ripe fruits of *S. caseolaris* in Hainan Dongzhaigang National Nature Reserve (19° 57' 23" N, 110° 30' 10" E) in China. The fruit was soaked in distilled water for 7 d and then individually planted in pots with a mud and sand (1:1) mixture as support. Growth chamber conditions were 30/28°C (day/night) and a 14:10 h (L: D) photoperiod, 400 $\mu\text{mol m}^{-2} \text{s}^{-1}$ photon flux density, and 90% constant humidity. The germinated seeds were cultured in a growth chamber for 5 weeks, at which time the seedlings were about 12 cm high with 12 leaves. We performed the chilling stress treatment on these seedlings in a growth chamber, by setting the temperature to 4°C and leaving the other conditions unchanged. The second leaf from the top of the seedlings were collected as samples from 0 h (CK) 3 h, 6 h, 12 h to 24 h separately, and then frozen in liquid nitrogen and stored at -80°C. Each treatment had three biological replicates.

Physiological response assays of chilling-treated seedlings

We measured relative electrolyte conductivity following Wang *et al.* (2017). The

malondialdehyde (MDA) content was measured by the method of Yao *et al* (2011). The soluble sugar content was measured by the method of Wang *et al.* (2013). The soluble protein content was measured by using the Bradford method (Bradford *et al.*, 1976). Three biological replicates were measured at each time point.

RNA extraction

Based on the physiological results, we used the seedlings without chilling as the control group (CK_1, CK_2, CK_3) and seedlings under chilling stress for 6 h were set as the treatment group (CT_1, CT_2, CT_3) for RNA-seq. Total RNA of leaf samples was extracted with TRIzol reagent (Invitrogen, Carlsbad, CA, USA) according to manufacturer instructions. RNA purity was checked by T6 Spectrophotometer (Puxi, Beijing, China). RNA integrity and concentration were measured by the RNA Nano 6000 Assay Kit of the Agilent Bioanalyzer 2100 system (Agilent Technologies, Santa Clara, CA, USA).

cDNA library construction and transcriptome sequencing

A 3 µg amount of total RNA of each sample was enriched using magnetic beads with Oligo (dT) and then fragmented into short fragments ~200 bp by an interrupting reagent. The first strand cDNA was synthesized by a random hexamer primer, and the second strand of cDNAs was synthesized using the buffer, dNTPs, DNA polymerase I, and RNase H. After the double-stranded cDNA was generated and processed with end-repair, A-tailed, and adapters ligation, we constructed a cDNA library by PCR amplification. The cDNA library was then sequenced using the BGISEQ-500 platform with paired-end reads of 100 bp, by the Beijing Genomic Institution (www.genomics.org.cn, BGI, Shenzhen, China). All raw reads data from this study were submitted to the National Center for Biotechnology Information (NCBI) Sequence Read Archive database under the accession number PRJNA668053.

Transcripts assembly and functional gene annotation

The raw data were filtered with SOAPnuke (v1.5.2) (Li *et al.*, 2008). We discarded the low quality reads such as those with adapter sequences, ambiguous bases ‘N’ is more than 5%, with more than 20% Q<10 bases. The remaining clean data were used for *de novo* assembly with the Trinity program (v2.0.6) (Grabherr *et al.*, 2011) and then the unigene sequences were aligned with the following databases: NR, NT, SwissProt, KEGG, KOG, Pfam and GO by BLAST software (version 2.2.26).

Differential expression analyses

The expression level of each transcript was measured by RSEM (v1.2.12), and the expression level of a single gene was expressed as the value of FPKM (fragments per kilobase of transcript per million mapped reads) method (Li *et al.*, 2011). For the sake of determining the differentially expressed genes (DEGs), we performed differential expression analysis by the DESeq2 (Anders and Huber, 2010). A P-value ≤ 0.05 and an expression level $|\log_2(\text{ratio})| > 2$ were regarded as significant differential expression. Gene ontology (GO) enrichment analysis of DEGs was conducted using the Goseq R package, GO terms with $p < 0.05$ were regarded as significantly enriched in DEGs (Young *et al.*, 2010). We analyzed the KEGG pathway functional enrichment of DEGs using the R package. Significant enrichment was defined as when the FDR terms were < 0.001 .

Quantitative real-time PCR analysis

We selected 12 DEGs to verify the reliability of transcriptome sequencing through qRT-PCR. The specific primers of qRT-PCR were designed by Primer3 software (<http://primer3.ut.ee/>) and are listed in Table S1. The qRT-PCR analyses were conducted using a LightCycler 480 RT-PCR system (Roche Applied Science, Mannheim, Germany) under the following conditions: 95°C for 3 min, 40 cycles of 95°C for 15 s, 56°C for 30 s, and 72°C for 20 s. Three replicates of each cDNA sample were performed for qRT-PCR analysis. We calculated the relative expression of each gene by the 2^{-DDCt} method (Livak *et al.*, 2001) and used the actins gene of *S. caseolaris* as a

reference.

RESULTS

Physiological responses of *S. apetala* seedlings under chilling stress

After 3 h exposure to 4°C, the leaves at the top of *S. caseolaris* seedlings began to show a slight curling, and after 6 h, the leaves in the top showed evident curling. After 12 h of chilling stress treatment, part of leaves had softened and exhibited loss of strength. After 24 h of 4°C chilling stress, most of leaves had withered (Figure 1). Electrolyte leakage, MDA content, soluble sugar content and soluble protein content increased significantly (Figure 2). The electrolyte leakage increased from $6.54 \pm 0.46\%$ (0 h) to $28.56 \pm 5.32\%$ (24 h); the MDA content increased from $2.15 \pm 0.79 \mu\text{mol/g}$ (0 h) to $14.01 \pm 1.58 \mu\text{mol/g}$ (24 h); the soluble sugar contents increased from $2.79 \pm 0.76 \mu\text{mol/g}$ (0 h) to $7.87 \pm 1.67 \mu\text{mol/g}$ (24 h); and the soluble protein content increased from $6.00 \pm 0.84 \mu\text{mol/g}$ (0 h) to $33.83 \pm 2.27 \mu\text{mol/g}$ (24 h). All of these parameters showed a linear increase. When exposed to chilling stress for 6 h, these parameters increased 118.68%, 299.98%, 160.67% and 56.15% compared with the control group. On the basis of these results, we selected the leaf samples exposed to 0 h and 6 h of chilling stress for RNA-seq to investigate the changes in genome-wide gene expression mechanism under chilling stress. The 0 h time the control (CK) and 6 h was regarded as the treatment group (CT), with three biological replicates.

Sequencing and *de novo* assembly of transcriptome

In total, we obtained 39.33 Gb clean bases from 6 cDNA libraries, and we obtained a total of 262.21 M clean reads from 280.46 M raw reads (Table S2). The clean reads were *de novo* assembled by Trinity software and they yielded 168,473 unigenes. All unigenes were longer than 200 bp and ranged from 297 to 16,287 bp. The 200-300 bp unigenes accounted for the largest proportion (13,159, 12.26%) (Figure S1A). The mean unigene length was 1,762 bp. The N50 and N90 lengths were 2,849 bp and 937 bp respectively, and the GC content was 43.94%.

Gene annotation and functional classification

To predict the putative function of the assembled unigenes, we used BLAST to compare seven databases including NR, NT, SwissProt, KEGG, KOG, Pfam and GO. The E-value cut-off was 10⁻⁵. A total of 125,360 (74.41%) unigenes were predicted to be homologous with known genes from the databases listed earlier (Table S3). Among them, 116,619 (69.22%), 85,761 (50.90%), 90,660 (53.81%), 94,737 (56.23%), 100,382 (59.58%), 96,869 (57.50%) and 92,876 (55.13%) unigenes were found in the seven databases. A total of 48,858 (29.00%) were found in all seven databases. The NR database had the highest proportion of annotations, with 69.22% unigenes being annotated. In the NR database, the unigene sequences exhibited the most similar BLASTx matches to gene sequences from *Punica granatum* (84,763, 72.69%), followed by *Eucalyptus grandis* (4,627, 3.97%) and *Quercus suber* (1125, 0.96%) (Figure S1B).

We classified the functions of the *S. caseolaris* unigenes by GO analysis and categorized 92,876 of the unigenes into 44 functional groups (Figure S1C). These groups were classified into the following three major GO categories: 18 functional groups in “biological processes”, 12 functional groups in “cell component”, and 14 functional groups in “molecular function”. The dominant subcategories of the classified genes included “metabolic process (9,916)”, “cellular process (22,187)”, and “biological regulation (10,062)” in the “biological processes” category; “membrane part (29,068)”, “cell (23,014)”, and “organelle part (9,821)” in the “cell component” category; “binding”(46,922), “catalytic activity (44,729)” and “transporter activity (5,902)” in the “molecular function” category. To analyze the intracellular metabolic pathways and biological functions in *S. caseolaris*, we conducted a KEGG analysis using the KEGG pathway tool. Genes were annotated to five categories. 1 functional group in “Cellular Processes”, 2 functional groups in “Environmental Information Processing”, 3 functional groups in “Genetic Information Processing”, 11 functional groups in “Metabolism”, and 1 functional group in “Organismal Systems” (Figure S1D).

GO term enrichment analysis of DEGs

We identified a total of 3,706 DEGs, including 2,501 that were up-regulated and 1,205 that were down-regulated under the chilling stress (Figure S2). The biological function information for the DEGs was analyzed by GO enrichment. A total of 2,902 DEGs were annotated in 1,411 terms and a total of 125 GO terms were identified. The most enriched GO categories among these DEGs were “nucleus”, “DNA binding”, “metal ion binding”, “DNA-binding transcription factor activity”, and “regulation of transcription, DNA-templated”, with 366, 239, 204, 128, and 125 DEGs respectively (Figure 3A).

Pathway enrichment analysis of DEGs

To characterize the active biological pathways of the DEGs in *S. caseolaris* under chilling stress, we classified the DEGs in KEGG biological pathways and conducted enrichment analysis. There were 2,557 DEGs annotated in 125 pathways. Among them, a total of nine KEGG pathways were significantly enriched with a $P\text{-value} \leq 0.05$. The three most highly represented pathways were “Plant hormone signal transduction (ko04075)”, “Plant-pathogen interaction (ko04626)”, and “Glycerophospholipid metabolism (ko00564)”, with 115, 88 and 41 DEGs respectively (Figure 3B). The largest number of DEGs included “plant hormone signal transduction”, indicating that plant hormones play an important role in response to chilling stress in *S. caseolaris*. The second largest number of DEGs included “Plant-pathogen interaction”, which suggested that low temperature exposed plants are more vulnerable to be pathogen infection. The “Glycerophospholipid metabolism” category had the third largest number of DEGs, suggesting that fatty acid metabolism responded positively to low temperature. A considerable number of biological reactions were altered in *S. caseolaris* in response to chilling stress.

DEGs associated with chilling stress

Carbohydrate metabolism related DEGs

Carbohydrates played an important role in plant response to low temperatures. In GO

enrichment analysis, 12 DEGs were enriched in “starch binding (GO:2001070)” and all were up-regulated. Many DEGs that were involved in starch, fructose, sucrose, glucose, and trehalose were up-regulated in chilling stress (Figure 4A). Four genes (CL1250.Contig10_All, CL13708.Contig9_All, CL3523.Contig11_All, and CL5529.Contig9_All) were involved in trehalose biosynthetic process, two sucrose synthase genes (CL14150.Contig25_All and CL2626.Contig4_All), and one *sucrose-phosphate synthase* gene (CL2626.Contig4_All) were involved in the sucrose process. Many DEGs were involved in “Pentose phosphate pathway (ko00030)”, “Fructose and mannose metabolism (ko00051)”, “Galactose metabolism (ko00052)”, “Pentose and glucuronate interconversions (ko00040)”, and “Starch and sucrose metabolism (ko00500)” respectively, and most of these were up-regulated.

Phytohormone related DEGs

KEGG analysis of DEGs in *S. caseolaris* showed that hormone signal transduction was significantly influenced by chilling stress. There were 115 DEGs enriched in “plant hormone signal transduction” and most of them were up-regulated (Figure 5). Especially in auxin signal transduction, ABA signal transduction, EN signal transduction and JA signal transduction.

In this GO analysis of DEGs, 41 DEGs enriched in the “auxin-activated signaling pathway (GO:0009734)” term. Among them, *AUX1* (Unigene13181_All) is a key gene that encodes an auxin receptor, and down-regulated 2.50 fold. In the ABA signal pathway, PLY and PP2C are key enzymes controlled by the ABA signaling pathway. In this study, the genes encoding these two enzymes (CL1229.Contig3_All, Unigene14664_All, and CL5508.Contig1_All) were all up-regulated. Additionally, seven DEGs were enriched in the “abscisic acid-activated signaling pathway (GO:0009738)” term. In the EN signal pathway, we found that the one gene (CL2232.Contig4_All) encoding ETR down-regulated 6.81 fold. In the JA signal pathway, cetyl-CoA acyltransferase 1 is a key enzyme for synthesis of JA-CoA. In this study, the genes (CL10456.Contig6_All) encoding this enzyme were up-regulated by 3.93-fold.

ROS related DEGs

We found DEGs related to catalase, glutathione peroxidase, peroxidase, and superoxide dismutase were involved in chilling stress (Figure 4B). Two genes encode superoxide dismutase (CL10965.Contig3_All and CL355.Contig5_All). 3 genes encode catalase (Unigene30041_All, Unigene30063_All and Unigene30085_All), and 10 genes encode peroxidase (CL1068.Contig11_All, CL1068.Contig6_All, CL1068.Contig7_All, CL11425.Contig1_All, CL13638.Contig5_All, CL2936.Contig3_All, CL3639.Contig5_All, CL3639.Contig6_All, CL4125.Contig8_All, and Unigene3189_All). These genes were all up-regulated, indicating that they may have played a positive role in activating antioxidant enzymes in *S. caseolaris* exposed to low temperatures.

Transcription factors

TFs play an important role in regulating gene expression that participates in plant stress regulatory processes, such as chilling stress-related processes. In this study, we classified a total of 232 TFs into 41 families and showed differential expression in chilling treated seedlings. A total of 161 (69.40%) were up-regulated. The five most abundant TF families were AP2-ERF, MYB, C3H, WRKY, and ARF with 35 (15.09%), 29 (12.50%), 21 (9.05%), 21 (9.05%), and 15 (6.47%) respectively (Figure 4C).

Validation of transcriptome data by RT-qPCR analyses

To validate the RNA-Seq results, we selected a total of 16 candidate genes for qRT-PCR analyses (Figure 6). Based on enrichment analyses, all of these genes were involved in the chilling response. They represented different functional categories or pathways, such as sugar metabolism, antioxidant enzyme, phytohormones and TFs. The results indicated that the transcriptome results were reliable.

DISCUSSION

With its rapid growth adaptability, *S. caseolaris* is a good candidate species for mangrove afforestation in China. Low temperature, however, have limited its distribution in high latitude areas. Understanding the physiological and molecular mechanisms of chilling resistance can aid in breeding cold tolerant varieties of *S. caseolaris*. We performed physiological and transcriptomic analyses of leaves under 4°C chilling stress, and then analyzed the DEGs involved in the antioxidant defense system, carbohydrate metabolism, plant hormone signals, and TFs.

Membrane injury of *S. caseolaris* seedlings caused by chilling stress

Membrane lipids are the first place that plants perceive and respond to abiotic stress signals such as low temperature. Lipids are involved in biological process, such as signal transduction, energy conversion, and metabolic regulation (Xie *et al.*, 2018). Damaged membrane lipids increase electrolyte leakage, and a high electrolyte leakage rate reflects serious damage caused by chilling stress. Membrane permeability is an important physiological index of plant resistance to stress. MDA is the final degradation product of lipid peroxidation, and the MDA level reflects the damage of membrane lipid peroxidation and the stress tolerance of plant cells (Mutlu *et al.*, 2013; Wise and Naylor, 1987). Physiological analysis showed that the relative electrolyte conductivity and the MDA level both increased significantly after chilling stress. Membrane lipid peroxidation likely occurred and membrane lipids were damaged. Similar results were found in *Magnolia wufengensis* (Deng *et al.*, 2019). Serious member lipid injury can result in seedling death. This might explain why most seedlings died when exposed to extreme low temperatures (Chen *et al.*, 2017). We found that DEGs were enriched in “Glycerophospholipid metabolism (ko00062)” and “Fatty acid elongation (ko00564)”. The genes responded to the increased level of unsaturated fatty acids and membrane fluidity in the cells of *S. caseolaris* seedlings under chilling stress, which may be a mechanism of cellular self-repair.

Carbohydrate metabolism-related DEGs

When exposed to low temperatures, plants usually break down starch and increase the content of carbohydrates to maintain stability of cell membrane structure, this could increase the low

temperature tolerance of plant cells (Guy *et al.*, 2008). In GO enrichment analysis, 12 DEGs were enriched in “starch binding (GO:2001070)” (Figure 3B). This could result in the conversion of starch into soluble sugar under chilling stress. Physiological experiments confirmed that the soluble sugars content of *S. caseolaris* increased after chilling stress. Increased levels of sucrose, raffinose, glucose, and fructose are involved in the low-temperature resistance of other plants (Anchordoguy *et al.*, 1987; Ma *et al.*, 2009). The RNA-seq data showed that many DEGs that are involved in starch, fructose, sucrose, glucose, and trehalose were up-regulated in chilling stress treatment. These data were consistent with previous studies (Wang *et al.*, 2018, Deng, *et al.*, 2019; Yang *et al.*, 2019). Plants can accumulate trehalose for oxidative detoxification to counteract abiotic stresses (Lai *et al.*, 2017). In the DEGs, four genes were involved in the trehalose biosynthetic process and all of them were up-regulated, which is similar to the report of Deng *et al.* (2019). Sucrose synthase and sucrose phosphate synthase play important roles in sucrose metabolism and biosynthesis respectively (Winter and Huber, 2000). We found that two sucrose synthase genes and one sucrose-phosphate synthase gene were up-regulated. These genes may have been involved in the response to chilling stress. A similar result was found by Yang *et al.* (2019). Carbohydrate also regulate expression of jasmonate, ABA and COR genes (Rutten and Santarius, 1992; Welling and Palva, 2006). We found that many DEGs were involved in carbohydrate metabolism, which indicated that carbohydrates play an important role in *S. caseolaris* response to chilling stress.

Antioxidant defense system

Under environment stress, ROS such as superoxide, hydroxyl radicals and hydrogen peroxide can accumulate in plant cells and cause oxidative damage (Elsheery *et al.*, 2008; Suzuki and Mittler, 2006). To scavenge ROS, antioxidant systems such as superoxide dismutase (SOD), catalase (CAT), peroxidase (POD), and ascorbate peroxidase (APX) are activated in response to plant stress (Mittler, 2002). SOD is the first antioxidant enzyme that could convert O_2^- to hydrogen peroxide (H_2O_2), and then POD and CAT could catalyze H_2O_2 and convert it to H_2O . We found

DEGs related to CAT, glutathione peroxidase, POD, and SOD were up-regulated, indicating that they may have played a key role in activating antioxidant enzymes in *S. caseolaris* exposed to low temperatures. ROS are also signal molecules that can induce gene expression and protein synthesis to increase stress tolerance in plants (Jaspers and Kangasjärvi, *et al.*, 2010). ROS also is active the mitogen-activated protein kinase (MAPK) cascade pathway, which regulates low-temperature response genes involved in TFs and some hormones. (Pitzschke, *et al.*, 2009; Xie, *et al.*, 2009). We found 15 DEGs enriched in “MAP kinase activity” and most of them were un-regulated, which indicated that MAPK signal transduction pathway also played an important role in chilling stress responses.

These results indicated that many antioxidant genes are activated, and these would not only increase the activity of antioxidant enzymes to scavenge with ROS, but also active a sequence of signal to response chilling stress.

Phytohormone signal network responses to chilling stress

Phytohormones are the secondary signals in plant cells that play a significant role in adaptation to environmental stress (Peleg *et al.*, 2011). They can activate a sequence of signal events and eventually induce the genes that directly respond to stress (Bari and Jones, 2009; Hakeem *et al.*, 2014). We found four key response hormone signal transduction pathways (auxin, ABA, EN, and JA) that were significantly influenced by chilling stress. Auxin is a plant growth-promoting hormone (Nemhauser *et al.*, 2006). In this study, 41 DEGs were enriched in the “auxin-activated signaling pathway (GO:0009734)” term. Down-regulation of the *AUX1* gene may reduce plant growth in response to chilling stress. The ABA signaling pathway is important in regulating abiotic stress responses in plants (Danquah, *et al.*, 2014). It can regulate stomatal closure, reduce water loss and maintain cell growth (Peleg & Blumwald, 2011). PLY and PP2C are key genes controlled by the ABA signaling pathway. In present study, the genes were up-regulated in response to chilling stress. This could activate high expression of PP2C and promote stomatal closure and decrease transpiration to reduce water loss. Similar results have been found on

Arabidopsis thaliana (Tähtiharju and Palva, 2001) and *Oryza sativa* L (Guan *et al.*, 2019). Additionally, the DEGs were also enriched in the “abscisic acid-activated signaling pathway (GO:0009738)” term, which further confirmed that ABA-dependent signaling is involved in the low temperature response of *S. caseolaris*. Genes related to ET biosynthesis often down-regulated expressed under low temperature treatment (Chu and Lee, 1989). In this study, the key gene encoding ETR was down-regulated, which was consistent with previous reports (Yang *et al.*, 2018). JA plays a significant role in plants responding to abiotic and biotic stress (Wasternack and Song, 2017; Wasternack and Strnad, 2018). The up-regulated key genes may promote the synthesis of JA-CoA and promote the synthesis of JA. Exogenous methyl salicylic acid (MeSA) or methyl jasmonate (MeJA) could induce the transcription of pathogenesis-related genes, and increase chilling tolerance and pathogen resistance (Ding, *et al.*, 2002). This may explain why many DEGs were enriched in “Plant-pathogen interaction”. Similar results have been found in *K. obovate*, *M. wufengensis*, and *Camellia sinensis* under chilling stress (Deng, *et al.*, 2019; Li *et al.*, 2019; Su *et al.*, 2019). However, how those plant hormones mediated signaling participates in chilling stress responses in *S. caseolaris* still need to be further study.

TFs responding to chilling stress

TFs play important roles in plant growth and stress tolerance (Lee *et al.*, 2005). When a plant experiences the chilling stress, a series of signal transduction pathways could activate TFs. The activated TFs will activate the expressions of a cascade of downstream resistance-related genes to enhance the cold tolerance by special binding (Kasuga *et al.*, 1999). Many TF families such as DREB (Ahmed *et al.*, 2017, Chen *et al.* 2012), MYB (Zhao *et al.*, 2012, Agarwal *et al.*, 2006; Chen *et al.*, 2006), and WRKY (Zou *et al.*, 2010) are related to plants resistance to low temperature stress. We identified 232 TFs that were classified into 41 families. AP2-ERF, MYB, C3H, WRKY, and ARF were five major TF families identified as DEGs, suggest that they played a crucial role in response to chilling stress. AP2-ERF genes belong to a plant-specific TF family involved in regulating stress responses (Mizoi *et al.*, 2012). The AP2-ERF superfamily consists of the ERF,

RAV, AP2, and DREB families. Overexpression of *AP2 TF*, *JcDREB*, and *BpDREB2* increased cold tolerance of *Arabidopsis* (Tang *et al.*, 2011; Sun *et al.*, 2014). Previous studies verified that AP2-ERFs involved in a lot of plant hormone mediated abiotic stress responses, such as ABA, ET, GA, CTK, and BR (Colebrook *et al.*, 2014; Kazan *et al.*, 2015; Tao *et al.*, 2015; Nolan *et al.*, 2017; Sah *et al.*, 2016). MYB are involved in chilling stress and regulation of ABA-responsive genes, and constitute with ABA-dependent, induced and mediated types. Which plays an important role in the upstream stage of low temperature transduction (Gyoungju *et al.*, 2016). *AtMYB52*, *AtMYB70*, and *AtMYB82* were ABA-dependent genes in responding abiotic stresses of *Arabidopsis* (Park *et al.*, 2011); *TaMYB1*, *TaMYB2*, *TaMYB3R1* were ABA-induced genes in responding abiotic stresses of wheat (Cai *et al.*, 2011; Tong *et al.*, 2006); *AtMYB2*, *AtMYB41* were ABA-mediated types that promote the accumulation of ABA in responding abiotic stresses (Abe *et al.*, 2003; Lippold *et al.*, 2009). The WRKY genes can respond strongly and rapidly to abiotic stresses (Chen *et al.*, 2012). The *WRKY46* gene enhanced the low temperature tolerance of transgenic cucumber by activating a series of cold-stress responsive genes in an ABA-dependent manner (Zhang *et al.*, 2016). *MaWRKY25* can be induced by low temperature or MeJA, which could increase the low temperature tolerance of banana. It could also active the *MaLOX2*, *MaAOS3*, *MaOPR3* genes to promote the synthesis of JA by special binding. Which could reduce the damage of banana fruit by low temperature (Ye, *et al.*, 2016). Other TFs, such as the HSF, bZIP, and GRAS families, are induced by chilling stress, and members of these families can affect the cold resistance of plants (Chinnusamy *et al.*, 2010). These results indicated that many TFs were involved in the seedlings of *S. caseolaris* in response to chilling stress through different pathways. Besides, the both unregulated TFs and phytohormones maybe have some connection, and the regulatory network need further study.

Conclusions

We analyzed at the morphological, physiological and transcriptome level of *S. caseolaris* response to chilling stress. Chilling stress of *S. caseolaris* likely involves damage to the cell

membranes. This was supported by a significant increase in the relative electrolyte conductivity and MDA contents. Up regulating genes in chilling stressed *S. caseolaris* were involved in plant hormone signal transduction, TFs, carbohydrate metabolism, and antioxidant enzymes. These genes might be involved in the significant increase of soluble protein content and soluble sugar content in response to the chilling stress (Figure 7). These data revealed the manner in which *S. caseolaris* responds to chilling stress, and provided insight for further research on the environmental adaptations of mangrove species.

Figure 1 Phenotypic changes of *S. caseolaris* under chilling stress (4 °C).

Figure 2 Physiological change of *S. caseolaris* in chilling stress.

Figure 3 The top 20 GO and KEGG enrichment scatter diagram depicting the differential expression of genes. A: the top 20 GO enrichment B: KEGG enrichment.

Figure 4 Heat map of relative expression levels of DEGs involved in main transcription factors, sugar metabolism and the antioxidant defense system. A: The main transcription factors B: The main sugar metabolism-related genes. C: The main antioxidant-related genes.

Figure 5 Expression of *S. caseolaris* genes in response to chilling stress for 0 h (CK) and 6 h (CT) as determined by qRT-PCR (blue) and RNA-seq (red).

Figure 6 Plant hormone signal transduction and the relative heat map. A Plant hormone signal transduction. B Heat map of DEGs involved with auxin, ABA, EN and JA.

Figure 7 Hypothetical model of the events occurring in the *S. caseolaris* leaves under chilling stress.

Table S1 List of primers used in this study

Table S2 Summary of sequence analysis

Table S3 Number of annotated unigenes

Table S4 Statistics of transcriptome assembly and unigenes

Figure S1 Characteristics of unigenes. A: Distribution of unigene lengths in *Sonneratia caseolaris*.
B: Main species distribution of *S. caseolaris* unigenes. C: Pathway annotation of unigenes based
on KEGG categorization D: Functional annotation of unigenes based on Gene Ontology (GO)
categorization.

Figure S2 Volcano diagram showing the differential expression of genes. Blue represents down-
regulated, red indicates up-regulated

REFERENCES

- Abe H, Urao T, Ito T, Seki M, Shinozaki K, Yamaguchi-Shinozaki K. 2003. Arabidopsis *AtMYC2* (bHLH) and *AtMYB2* (MYB) function as transcriptional activators in abscisic acid signaling. *The Plant cell* 15(1): 63-78 DOI 10.1105/tpc.006130.
- Agarwal M, Hao Y, Kapoor A, Dong CH, Fujii H, Zheng X, Zhu JK. 2006. A R2R3 type MYB transcription factor is involved in the cold regulation of *CBF* genes and in acquired freezing tolerance. *The Journal of biological chemistry* 281(49): 37636-37645 DOI 10.1074/jbc.M605895200.
- Ahmed MM, Shen C, Khan AQ, Wahid MA, Shaban M, Lin Z. 2017. A comparative genomics approach revealed evolutionary dynamics of microsatellite imperfection and conservation in genus *Gossypium*. *Hereditas* 154: 12 DOI 10.1186/s41065-017-0034-4.
- An JP, Wang XF, Zhang XW, Xu HF, Bi SQ, You CX, & Hao YJ. 2020. An apple MYB transcription factor regulates cold tolerance and anthocyanin accumulation and undergoes MIEL1-mediated degradation. *Plant biotechnology journal* 18(2): 337-353. DOI 10.1111/pbi.13201.
- Anchordoguy TJ, Rudolph AS, Carpenter JF, Crowe JH. 1987. Modes of interaction of cryoprotectants with membrane phospholipids during freezing. *Cryobiology* 24(4): 324-331. DOI 10.1016/0011-2240(87)90036-8.
- Anders S and Huber W. 2010. Differential expression analysis for sequence count data. *Genome biology*, 11(10): R106 DOI 10.1186/gb-2010-11-10-r106.

- 486 Bari R and Jones J. 2009. Role of plant hormones in plant defence responses. *Plant molecular*
487 *biology* 69(4): 473-488 DOI 10.1007/s11103-008-9435-0.
- 488 Bradford MM. 1976. A rapid and sensitive method for the quantitation of microgram quantities of
489 protein utilizing the principle of protein-dye binding. *Analytical biochemistry* 72: 248-254
490 DOI 10.1006/abio.1976.9999.
- 491 Buti M, Pasquariello M, Ronga D, Milc JA, Pecchioni N, Ho VT, Pucciariello C, Perata P, Francia
492 E. 2018. Transcriptome profiling of short-term response to chilling stress in tolerant and
493 sensitive *Oryza sativa* ssp. Japonica seedlings. *Functional & integrative genomics* 18(6): 627-
494 644. DOI 10.1007/s10142-018-0615-y
- 495 Chen LG, Song Y, Li SJ, Zhang LP, Zou CS, Yu DQ. 2012. The role of WRKY transcription
496 factors in plant abiotic stresses. *Biochimica et biophysica acta* 1819(2): 120-128. DOI
497 10.1016/j.bbagr.2011.09.002.
- 498 Chen LZ, Wang WQ, Li QQ, Zhang YH, Yang S, Osland MJ, Huang J, Peng CJ. 2017. Mangrove
499 species' responses to winter air temperature extremes in China. *Ecosphere* 8(6): e01865 DOI
500 10.1002/ecs2.1865.
- 501 Chen YH, Yang XY, He K, Liu MH, Li JG, Gao ZF, Lin ZQ, Zhang YF, Wang XX, Qiu XM,
502 Shen YP, Zhang L, Deng XH, Luo JC, Deng XW, Chen ZL, Gu HY, Qu LJ. 2006. The MYB
503 transcription factor superfamily of *Arabidopsis*: expression analysis and phylogenetic
504 comparison with the rice MYB family. *Plant molecular biology* 60(1): 107-124. DOI
505 10.1007/s11103-005-2910-y.
- 506 Chikako K and Ryoza I. 2009. Molecular basis of disease resistance acquired through cold
507 acclimation in overwintering plants. *Journal of plant biology* 52:19-26. DOI 10.1007/s12374-
508 008-9006-6
- 509 Chinnusamy V, Zhu JK, Sunkar R. 2010. Gene regulation during cold stress acclimation in plants.
510 *Methods in molecular biology* 639: 39-55 DOI 10.1007/978-1-60761-702-0_3.
- 511 Chu C and Lee TM. 1989. The relationship between ethylene biosynthesis and chilling tolerance
512 in seedlings of rice (*Oryza sativa*). *Bot Bull Acad Sin* 130:263-273.

- 513 Colebrook EH, Thomas SG, Phillips AL, Hedden P. 2014. The role of gibberellin signalling in
514 plant responses to abiotic stress. *The Journal of experimental biology*, 217(1): 67-75 DOI
515 10.1242/jeb.089938.
- 516 Danquah A, de Zelicourt A, Colcombet J, & Hirt H. 2014. The role of ABA and MAPK signaling
517 pathways in plant abiotic stress responses. *Biotechnology advances*, 32(1): 40-52. DOI
518 10.1016/j.biotechadv.2013.09.006.
- 519 Deng S, Ma J, Zhang L, Chen F, Sang Z, Jia Z, Ma L. 2019. *De novo* transcriptome sequencing
520 and gene expression profiling of *Magnolia wufengensis* in response to cold stress. *BMC plant*
521 *biology* 19(1): 321 DOI 10.1186/s12870-019-1933-5.
- 522 Ding CK, Wang CY, Gross KC, Smith DL. 2002. Jasmonate and salicylate induce the expression
523 of pathogenesis-related-protein genes and increase resistance to chilling injury in tomato fruit.
524 *Planta*, 214(6): 895-901 DOI 10.1007/s00425-001-0698-9.
- 525 Duke NC, Meynecke JO, Dittmann S, Ellison AM, Anger K, Berger U, Cannicci S, Diele K, Ewel
526 KC, Field CD, Koedam N, Lee SY, Marchand C, Nordhaus I, Dahdouh-Guebas F. 2007. A
527 world without mangroves? *Science* 317(5834): 41-42 DOI 10.1126/science.317.5834.41b.
- 528 Duke NC. 1992. Coastal and Estuarine Studies Series. American Geophysical Union, Washington,
529 DC
- 530 Elsheery NI, Cao KF. 2008. Gas exchange, chlorophyll fluorescence, and osmotic adjustment in
531 two mango cultivars under drought stress. *Acta Physiologiae Plantarum* 30(6): 769-777 DOI
532 10.1007/s11738-008-0179-x.
- 533 Fang L, Yang Y, Guo W, Li J, Zhong C, Huang Y, Zhou R, Shi S. 2016. *De novo* assembly of the
534 transcriptome of *Aegiceras corniculatum*, a mangrove species in the IndoWest Pacific region.
535 *Marine genomics* 28: 49-52 DOI 10.1016/j.margen.2016.05.004.
- 536 Grabherr MG, Haas BJ, Yassour M, Levin JZ, Thompson DA, Amit I, Adiconis X, Fan L,
537 Raychowdhury R, Zeng Q, Chen Z, Mauceli E, Hacohen N, Gnirke A, Rhind N, di Palma F,
538 Birren BW, Nusbaum C, Lindblad-Toh K, Friedman N, Regev A. 2011. Full-length
539 transcriptome assembly from RNA-Seq data without a reference genome. *Nature*

biotechnology 29(7): 644-652 DOI 10.1038/nbt.1883.

Guan SG, Xu Q, Ma DR, Zhang WZ, Xu ZJ, Zhang MG, Guo ZF. 2019. Transcriptomics profiling in response to cold stress in cultivated rice and weedy rice. *Gene* 685:96-105 DOI 10.1016/j.gene.2018.10.066.

Guy C, Kaplan F, Kopka J, Selbig J, and Hinch DK. 2008. Metabolomics of temperature stress. *Physiologia plantarum* 132(2): 220-235 DOI 10.1111/j.1399-3054.2007.00999.x.

Gyoungju N, Moonsub L, Do-Soon K, Lane RA, Thomas V and Lee DK. 2016. Transcriptome analysis of *Spartina pectinata* response to freezing stress. *PloS one* 11(3): e0152294 DOI 10.1371/journal.pone.0152294.

Hakeem KR, Rehman RU, Tahir I. 2014. Plant signaling: understanding the molecular crosstalk || signaling in response to cold stress 10:193-226 DOI 10.1007/978-81-322-1542-4_10.

He W, Zhuang H, Fu Y, Guo L, Guo B, Guo L, Zhang X, Wei Y. 2015. *De novo* Transcriptome Assembly of a Chinese Locoweed (*Oxytropis ochrocephala*) Species Provides Insights into Genes Associated with Drought, Salinity, and Cold Tolerance. *Frontiers in plant science* 2(6): 1086 DOI 10.3389/fpls.2015.01086.

Jaspers P and Kangasjärvi J 2010. Reactive oxygen species in abiotic stress signaling. *Physiologia plantarum* 138(4): 405-413 DOI 10.1111/j.1399-3054.2009.01321.x

Jin J and Kim J. 2013. Cold stress signaling networks in *Arabidopsis*. *Journal of Plant Biology* 56(2): 69-76 DOI 10.1007/s12374-013-0903-y.

Kasuga M, Liu Q, Miura S, Yamaguchi-Shinozaki K, Shinozaki K. 1999. Improving plant drought, salt, and freezing tolerance by gene transfer of a single stress-inducible transcription factor. *Nature biotechnology* 17(3): 287-291 DOI 10.1038/7036.

Kazan K. 2015. Diverse roles of jasmonates and ethylene in abiotic stress tolerance. *Trends in plant science* 20(4): 219-229. DOI 10.1016/j.tplants.2015.02.001.

Krishnamurthy P, Mohanty B, Wijaya E, Lee DY, Lim TM, Lin Q, Xu J, Loh CS, Kumar PP. 2017. Transcriptomics analysis of salt stress tolerance in the roots of the mangrove *Avicennia officinalis*. *Scientific reports* 7(1): 10031 DOI 10.1038/s41598-017-10730-2.

- Kumar RR, Goswami S, Sharma SK, Kala YK, Rai GK, Mishra DC, Grover M, Singh GP, Pathak H, Rai A, Chinnusamy V, Rai RD. 2015. Harnessing next generation sequencing in climate change: RNA-Seq analysis of heat stress-responsive genes in wheat (*Triticum aestivum* L.). *OMICS* 19(10): 632-47 DOI 10.1089/omi.2015.0097.
- Lai CP, Huang LM, Chen LF, Chan MT, Shaw JF. 2017. Genome-wide analysis of GDSSL-type esterases/lipases in *Arabidopsis*. *Plant molecular biology* 95(1-2): 181-197 DOI 10.1007/s11103-017-0648-y.
- Lee BH, Henderson DA, Zhu JK. 2005. The *Arabidopsis* cold-responsive transcriptome and its regulation by ICE1. *The Plant cell* 17(11): 3155-3175 DOI 10.1105/tpc.105.035568.
- Li B, Dewey CN. 2011. RSEM: accurate transcript quantification from RNA-Seq data with or without a reference genome. *BMC Bioinformatics* 4(12): 323 DOI 10.1186/1471-2105-12-323.
- Li R, Li Y, Kristiansen K, Wang J. 2008. SOAP: short oligonucleotide alignment program. *Bioinformatics* 24(5): 713-714 DOI 10.1093/bioinformatics/btn025.
- Li Y, Wang X, Ban Q, Zhu X, Jiang C, Wei, C, Bennetzen JL. 2019. Comparative transcriptomic analysis reveals gene expression associated with cold adaptation in the tea plant *Camellia sinensis*. *BMC genomics* 20(1): 624. DOI 10.1186/s12864-019-5988-3.
- Lippold F, Sanchez DH, MusialakM, Schlereth A, Scheible WR, Hinch DK, Udvardi MK. 2009. AtMyb41 regulates transcriptional and metabolic responses to osmotic stress in *Arabidopsis*. *Plant physiology* 149(4): 1761-1772. DOI 10.1104/pp.108.134874
- Livak KJ and Schmittgen TD. 2001. Analysis of relative gene expression data using real-time quantitative PCR and the $2^{-\Delta\Delta Ct}$ method. *Methods* 25(4): 402-408 DOI 10.1006/meth.2001.1262.
- Ma YY, Zhang YL, Lu J, Shao HB. 2009. Roles of plant soluble sugars and their responses to plant cold stress. *African Journal of Biotechnology* 8:2004-2010 DOI 10.1186/1471-2164-10-234.
- Marè C, Mazzucotelli E, Crosatti C, Francia E, Stanca AM, & Cattivelli L. 2004. Hv-WRKY38:

- a new transcription factor involved in cold- and drought-response in barley. *Plant molecular biology* 55(3): 399-416 DOI 10.1007/s11103-004-0906-7.
- Mittler R. 2002. Oxidative stress, antioxidants and stress tolerance. *Trends in plant science* 7(9): 405-410 DOI 10.1016/s1360-1385(02)02312-9.
- Mizoi J, Shinozaki K, Yamaguchi-Shinozaki K. 2012. AP2/ERF family transcription factors in plant abiotic stress responses. *Biochim Biophys Acta* 1819(2): 86-96 DOI 10.1016/j.bbagrm.2011.08.004.
- Mutlu S, Karadaolu A, Nalbantolu B. 2013. Protective role of salicylic acid applied before cold stress on antioxidative system and protein patterns in barley apoplast. *Biologia Plantarum* 57(3): 507-513 DOI 10.1007/s10535-013-0322-4.
- Nakashima K, Ito Y, Yamaguchi-Shinozaki K. 2009. Transcriptional regulatory networks in response to abiotic stresses in *Arabidopsis* and grasses. *Plant physiology* 149(1): 88-95 DOI 10.1104/pp.108.129791.
- Nemhauser JL, Hong F, Chory J. 2006. Different plant hormones regulate similar processes through largely nonoverlapping transcriptional responses. *Cell* 126(3): 467-75 DOI 10.1016/j.cell.2006.05.050.
- Nievola CC, Carvalho CP, Carvalho V, Rodrigues E. 2017. Rapid responses of plants to temperature changes. *Temperature* (Austin) 4(4):371-405 DOI 10.1080/23328940.2017.1377812.
- Nolan TM, Brennan B, Yang M, Chen J, Zhang M, Li Z, Wang X, Bassham DC, Walley J, Yin, Y. 2017. Selective Autophagy of BES1 Mediated by DSK2 Balances Plant Growth and Survival. *Developmental cell*, 41(1): 33-46.e7 DOI 10.1016/j.devcel.2017.03.013.
- Park MY, Kang JY, Kim SY. 2011. Overexpression of *AtMYB52* confers ABA hypersensitivity and drought tolerance. *Molecules and cells*, 31(5): 447-454 DOI 10.1007/s10059-011-0300-7.
- Peleg Z, Blumwald E. 2011. Hormone balance and abiotic stress tolerance in crop plants. *Current opinion in plant biology* 14(3): 290-295 DOI 10.1016/j.pbi.2011.02.001

- 621 Peng YL, Wang YS, Fei J, Sun CC, Cheng H. 2015. Ecophysiological differences between three
622 mangrove seedlings (*Kandelia obovata*, *Aegiceras corniculatum*, and *Avicennia marina*)
623 exposed to chilling stress. *Ecotoxicology* 24(7-8): 1722-1732 DOI 10.1007/s10646-015-
624 1488-7.
- 625 Pitzschke A, Schikora A, & Hirt H. 2009. MAPK cascade signalling networks in plant defence.
626 *Current opinion in plant biology* 12(4): 421-426.
- 627 Ren H, Lu HF, Shen WJ, Huang C, Guo QF, Li ZA, Jian SG. 2002. *Sonneratia apetala* Buch.Ham
628 in the mangrove ecosystems of China: An invasive species or restoration species? *Ecological*
629 *Engineering* 35:1243-1248 DOI 10.1016/j.ecoleng.2009.05.008.
- 630 Robertsen AI, Alongi DM. 1992. Tropical Mangrove Ecosystem. American Geophysical Union,
631 Washington, DC, 130pp.
- 632 Román Á, Andreu V, Hernández ML, Lagunas B, Picorel R, Martínez-Rivas JM, & Alfonso M.
633 2012. Contribution of the different omega-3 fatty acid desaturase genes to the cold response
634 in soybean. *Journal of experimental botany*, 63(13): 4973-4982 DOI 10.1093/jxb/ers174
- 635 Rutten D, Santarius KA, 1992. Relationship between frost tolerance and sugar concentration of
636 various bryophytes in summer and winter. *Oecologia* 91:260-265.
- 637 Sah SK, Reddy KR, Li J. 2016. Absciscic Acid and Abiotic Stress Tolerance in Crop Plants.
638 *Frontiers in plant science* 7: 571. DOI 10.3389/fpls.2016.00571
- 639 Schmitt K, Duke NC. 2015. Mangrove Management, Assessment and Monitoring. Tropical
640 Forestry Handbook. Springer Berlin Heidelberg. pp1725-1759 DOI 10.1007/978-3-642-
641 41554-8_126-1.
- 642 Su W, Ye C, Zhang Y, Hao S, Li QQ. 2019. Identification of putative key genes for coastal
643 environments and cold adaptation in mangrove *Kandelia obovata* through transcriptome
644 analysis. *The Science of the total environment* 681: 191-201 DOI
645 10.1016/j.scitotenv.2019.05.127.
- 646 Sun J, Peng X, Fan W, Tang M, Liu J, Shen S. 2014. Functional analysis of *BpDREB2* gene
647 involved in salt and drought response from a woody plant *Broussonetia papyrifera*. *Gene*

- 535(2):140-149 DOI 10.1016/j.gene.2013.11.047.
- Sung DY, Kaplan F, Lee KJ, Guy CL. 2003. Acquired tolerance to temperature extremes. *Trends in plant science*, 8(4): 179-187. DOI 10.1016/S1360-1385(03)00047-5
- Suzuki N and Mittler R. 2006. Reactive oxygen species and temperature stresses: a delicate balance between signaling and destruction. *Physiologia Plantarum* 126(1): 45-51 DOI 10.1111/j.0031-9317.2005.00582.x.
- Tähtiharju S, Palva T. 2001. Antisense inhibition of protein phosphatase 2C accelerates cold acclimation in *Arabidopsis thaliana*. *The Plant journal* 26(4): 461-470 DOI 10.1046/j.1365-313x.2001.01048.x.
- Tang M, Liu X, Deng H, Shen S. 2011. Over-expression of JcDREB, a putative AP2/ERF domain-containing transcription factor gene in woody biodiesel plant *Jatropha curcas*, enhances salt and freezing tolerance in transgenic *Arabidopsis thaliana*. *Plant science* 181(6): 623-31 DOI 10.1016/j.plantsci.2011.06.014.
- Theocharis A, Clément C, Barka EA. 2012. Physiological and molecular changes in plants grown at low temperatures. *Planta* 235(6): 1091-1105 DOI 10.1007/s00425-012-1641-y.
- Thomashow MF. 1999. Plant cold acclimation: freezing tolerance genes and regulatory mechanisms. *Annual review of plant physiology and plant molecular biology* 50: 571-599. DOI 10.1146/annurev.arplant.50.1.571.
- Tomlinson PB. 1999. The Botany of Mangroves. Cambridge University Press, New York, pp126.
- Tong GL, Jang CS, Kim JY, Dong SK, Park JH, Kim DY. 2006. A Myb transcription factor (TaMyb1) from wheat roots is expressed during hypoxia: roles in response to the oxygen concentration in root environment and abiotic stresses. *Physiologia Plantarum* 129: 275-385 DOI 10.1111/j.1399-3054.2006.00828.x.
- Wang BS, Liao BW, Wang YJ, Zan QJ. 2002. Mangrove forest ecosystem and its sustainable development in shengzhen bay. Beijing China: Science Press (in Chinese).
- Wang H, Zou Z, Wang S, Gong M. 2013. Global analysis of transcriptome responses and gene expression profiles to cold stress of *Jatropha curcas* L. *PLoS One* 8(12): e82817 DOI

10.1371/journal.pone.0082817.

Wang K, Bai ZY, Liang QY, Liu QL, Zhang L, Pan YZ, Liu GL, Jiang BB, Zhang F, Jia Y. 2018.

Transcriptome analysis of chrysanthemum (*Dendranthema grandiflorum*) in response to low temperature stress. *BMC genomics* 19(1): 319 DOI 10.1186/s12864-018-4706-x.

Wang K, Zhong M, Wu YH, Bai ZY, Liang QY, Liu QL, Pan YZ, Zhang L, Jiang BB, Jia Y, Liu

GL. 2017. Overexpression of a chrysanthemum transcription factor gene DgNAC1 improves the salinity tolerance in chrysanthemum. *Plant cell reports* 36(4):571-581 DOI 10.1007/s00299-017-2103-6.

Wang Q, Guan Y, Wu Y, Chen H, Chen F, Chu C. 2008. Overexpression of a rice *OsDREB1F*

gene increases salt, drought, and low temperature tolerance in both Arabidopsis and rice. *Plant molecular biology* 67(6): 589-602 DOI 10.1007/s11103-008-9340-6.

Wang WQ and Wang M. 2007. The mangrove of China. Science Press, Beijing, China.

Wasternack C, Song S 2017 Jasmonates: biosynthesis, metabolism, and signaling by proteins

activating and repressing transcription. *Journal of experimental botany* 68(6): 1303-1321 DOI 10.1093/jxb/erw443.

Wasternack C, Strnad M. 2018. Jasmonates: News on occurrence, biosynthesis, metabolism and

action of an ancient group of signaling compounds. *International journal of molecular sciences* 19(9): 2539 DOI 10.3390/ijms19092539.

Welling A, Palva ET. 2006. Molecular control of cold acclimation in trees. *Physiologia Plantarum*

127(2): 167-181 DOI: 10.1111/j.1399-3054.2006.00672.x

Winter H and Huber, SC. 2000. Regulation of sucrose metabolism in higher plants: localization

and regulation of activity of key enzymes. *Critical reviews in biochemistry and molecular biology* 35(4): 253-289 DOI 10.1080/10409230008984165.

Wise RR, Naylor AW. 1987. Chilling-enhanced photooxidation: The peroxidative destruction of

lipids during chilling injury to photosynthesis and ultrastructure. *Plant physiology* 83(2): 272-277 DOI 10.1104/pp.83.2.272.

Xie G, Kato H, Sasaki K, & Imai R 2009. A cold-induced thioredoxin h of rice, *OsTrx23*,

negatively regulates kinase activities of *OsMPK3* and *OsMPK6* in vitro. *FEBS letters* 583(17): 2734-2738. DOI 10.1016/j.febslet.2009.07.057

Xie ZY, Zhou ZL, Li HM, Yu JJ, Jiang JJ, Tang ZH, Ma DF, Zhang BH, Han YH, Li ZY. 2018. High throughput sequencing identifies chilling responsive genes in sweetpotato (*Ipomoea batatas* Lam.) during storage. *Genomics* 111(5): 1006-1017 DOI10.1016/j.ygeno.2018.05.014.

Yamanaka T, Miyama M, Tada Y. 2009. Transcriptome profiling of the mangrove plant *Bruguiera gymnorhiza* and identification of salt tolerance genes by *Agrobacterium* functional screening. *Bioscience, biotechnology, and biochemistry* 73(2): 304-310 DOI 10.1271/bbb.80513.

Yang T, Huang XS. 2018. Deep sequencing-based characterization of transcriptome of *Pyrus ussuriensis* in response to cold stress. *Gene* 661:109-118 DOI10.1016/j.gene.2018.03.067.

Yang X, Zhao T, Rao P, Gao K, An X. 2019. Transcriptome profiling of *Populus tomentosa* under cold stress. *Industrial Crops and Products* 135:283-293 DOI10.1016/j.indcrop.2019.04.056.

Yang Y, Yang S, Li J, Deng Y, Zhang Z, Xu S, Guo W, Zhong C, Zhou R, Shi S. 2015a. Transcriptome analysis of the Holly mangrove *Acanthus ilicifolius* and its terrestrial relative, *Acanthus leucostachyus*, provides insights into adaptation to intertidal zones. *BMC Genomics* 16(1): 605 DOI10.1186/s12864-015-1813-9.

Yang Y, Yang S, Li J, Li X, Zhong C, Huang Y, Zhou R, Shi S. 2015b. De novo assembly of the transcriptomes of two yellow mangroves, *Ceriops tagal* and *C. zippeliana*, and one of their terrestrial relatives, *Pellacalix yunnanensis*. *Mar Genomics* 23:33-6 DOI10.1016/j.margen.2015.04.003.

Yao YX, Dong QL, Zhai H, You CX, Hao YJ. 2011. The functions of an apple cytosolic malate dehydrogenase gene in growth and tolerance to cold and salt stresses. *Plant physiology and biochemistry* 49(3): 257-64 DOI10.1016/j.plaphy.2010.12.009.

Ye YJ, Xiao YY, Han YC, Shan W, Fan ZQ, Xu QG, Kuang JF, Lu WJ, Lakshmanan P, & Chen JY. 2016. Banana fruit VQ motif-containing protein5 represses cold-responsive transcription factor *MaWRKY26* involved in the regulation of JA biosynthetic genes. *Scientific reports* 6:

23632. DOI 10.1038/srep23632
- Young MD, Wakefield MJ, Smyth GK, Oshlack A. 2010. Gene ontology analysis for RNA-seq: accounting for selection bias. *Genome biology* 11(2): R14 DOI10.1186/gb-2010-11-2-r14.
- Zan QJ, Wang BS, Wang YJ, Li MG. 2003. Ecological assessment on the introduced *Sonneratia caseolaris* and *Sonneratia apetala* at the mangrove forest of Shenzhen Bay, China. *Acta Botanica Sinica* 45:544-555.
- Zhang X, Fowler SG, Cheng H, Lou Y, Rhee, SY, Stockinger EJ, & Thomashow MF. 2004. Freezing-sensitive tomato has a functional CBF cold response pathway, but a CBF regulon that differs from that of freezing-tolerant Arabidopsis. *Plant journal*, 39(6): 905-919 DOI 10.1111/j.1365-313X.2004.02176.x.
- Zhang Y, Yu H, Yang X, Li Q, Ling J, Wang H, Gu X, Huang S, Jiang W. 2016. *CsWRKY46*, a WRKY transcription factor from cucumber, confers cold resistance in transgenic-plant by regulating a set of cold-stress responsive genes in an ABA-dependent manner. *Plant physiology and biochemistry* 108: 478-487 DOI10.1016/j.plaphy.2016.08.013.
- Zhao L, Nicholson JK, Lu A, Wang Z, Tang H, Holmes E, Shen J, Zhang X, Li JV, Lindon JC. 2012. Targeting the human genome-microbiome axis for drug discovery: inspirations from global systems biology and traditional Chinese medicine. *Journal of proteome research* 11(7): 3509-3519 DOI10.1021/pr3001628.
- Zhou MQ, Shen C, Wu LH, Tang KX, Lin J. 2011. CBF-dependent signaling pathway: a key responder to low temperature stress in plants. *Critical reviews in biotechnology*. 31(2): 186-192 DOI10.3109/07388551.2010.505910.
- Zou C, Jiang W, Yu D. 2010. Male gametophyte-specific *WRKY34* transcription factor mediates cold sensitivity of mature pollen in Arabidopsis. *Journal of experimental botany* 61(14): 3901-3914 DOI10.1093/jxb/erq204.

Figure 1

Phenotypic changes of *S. caseolaris* under chilling stress (4 °C).



Figure 2

Physiological change of *S. caseolaris* in chilling stress.

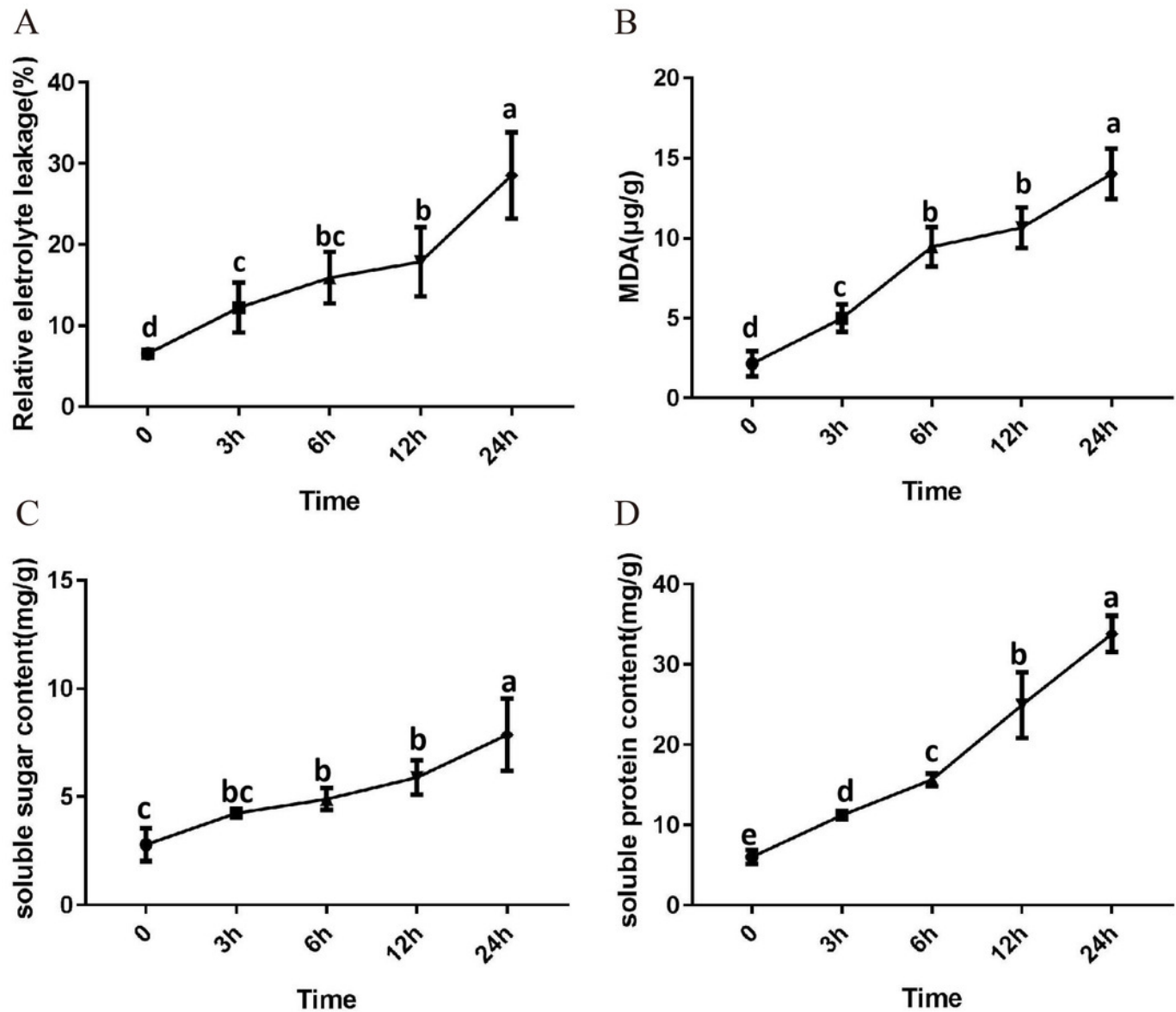


Figure 3

The top 20 GO and KEGG enrichment scatter diagram depicting the differential expression of genes. A: the top 20 GO enrichment. B: KEGG enrichment.

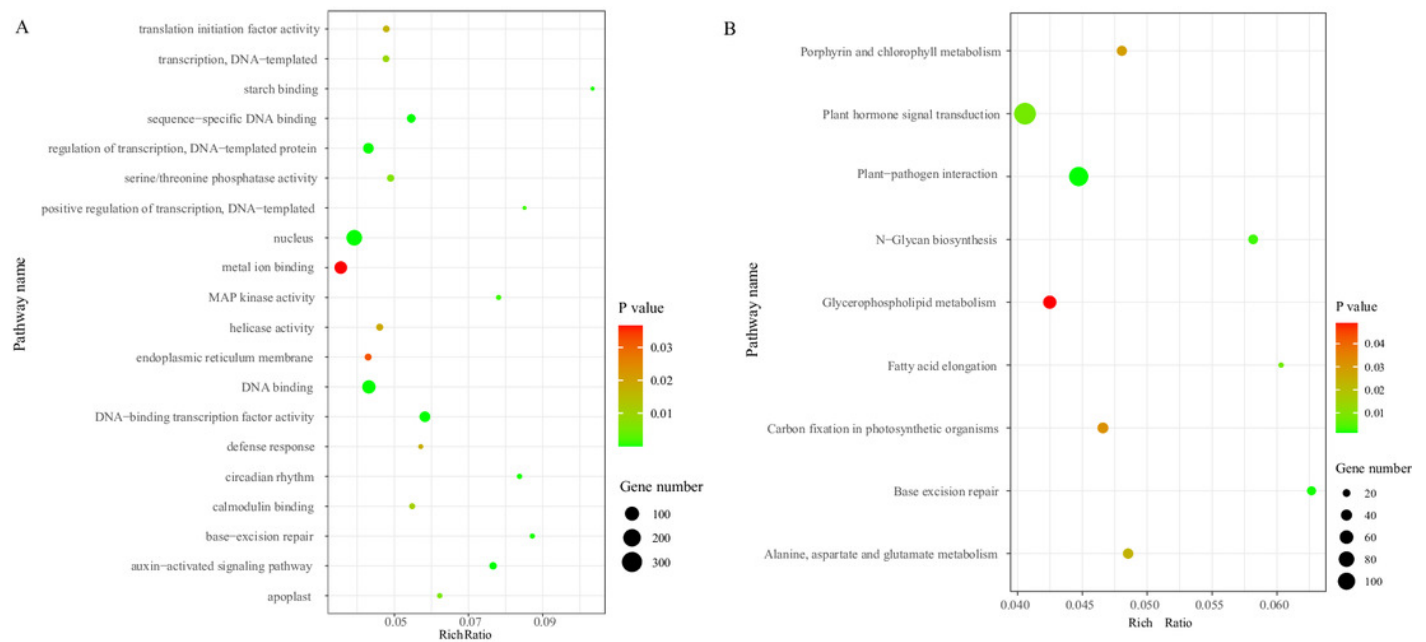


Figure 4

Figure 4 Heat map of relative expression levels of DEGs involved in main transcription factors, sugar metabolism and the antioxidant defense system. A: The main sugar metabolism-related genes. B: The main antioxidant-related genes. C: The main transcripti

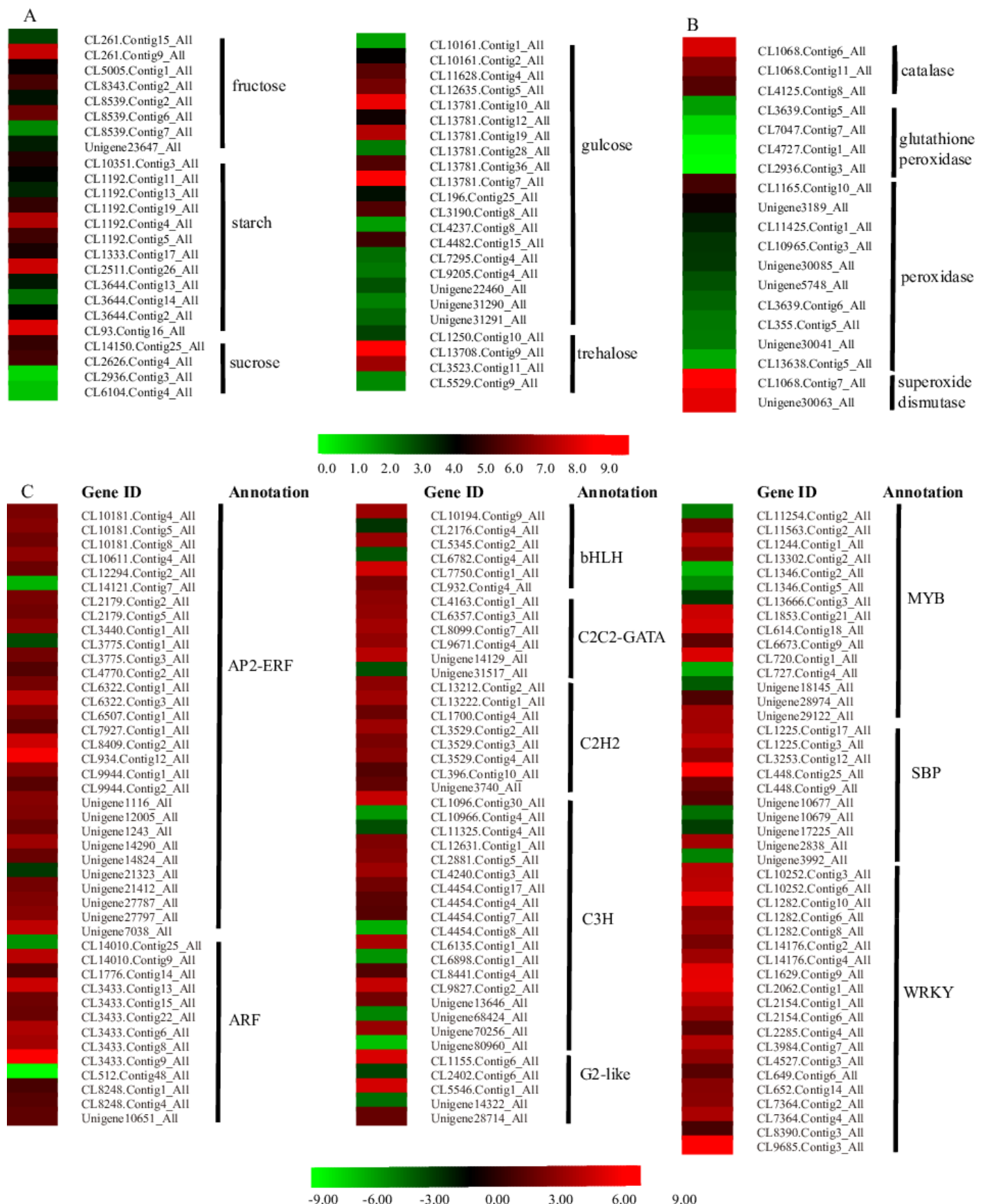


Figure 5

Figure 5 Plant hormone signal transduction and the relative heat map. A Plant hormone signal transduction. B Heat map of DEGs involved with auxin, ABA, EN and JA.

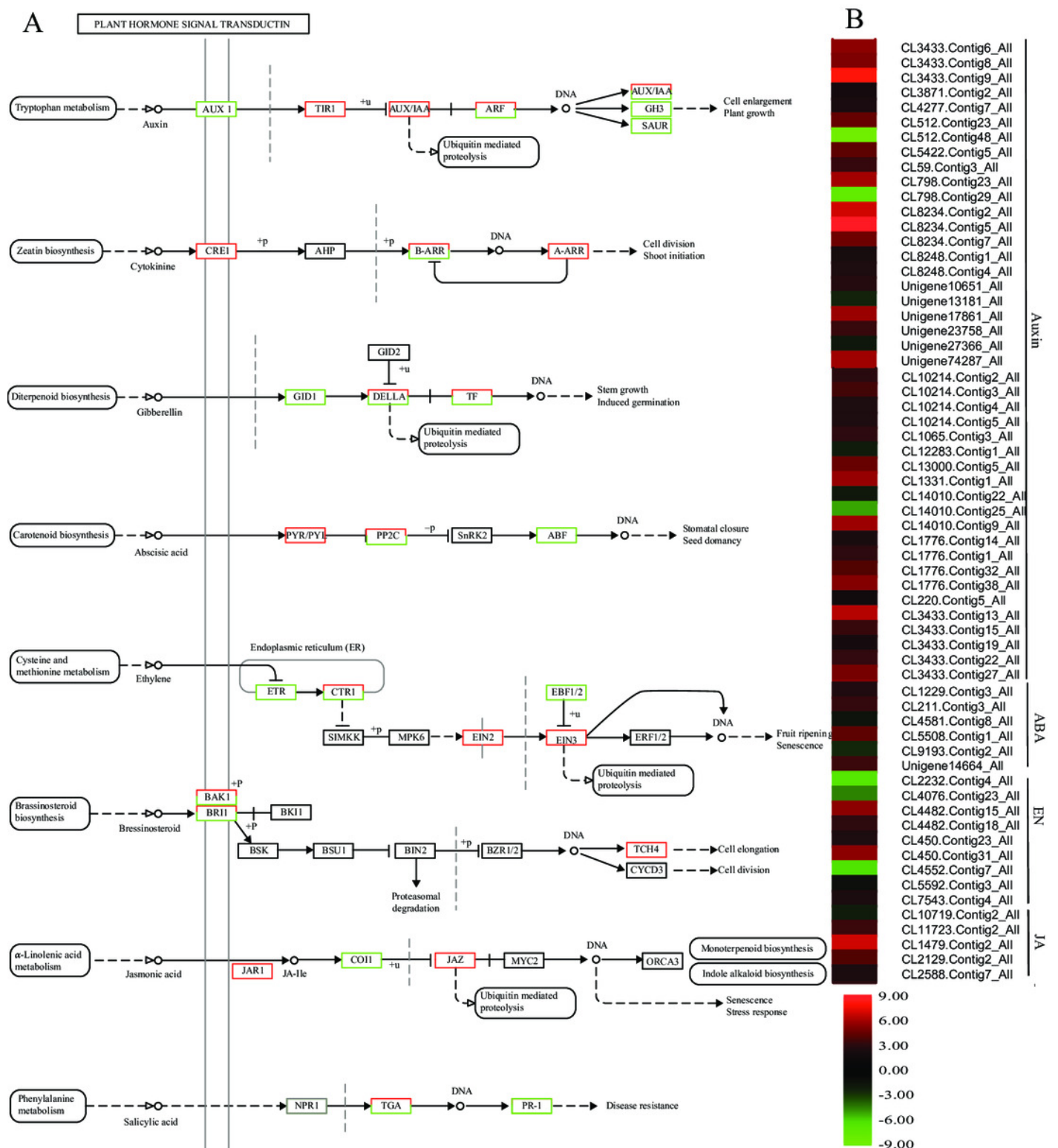


Figure 6

Expression of *S. caseolaris* genes in response to chilling stress for 0 h (CK) and 6 h (CT) as determined by qRT-PCR (blue) and RNA-seq (red).

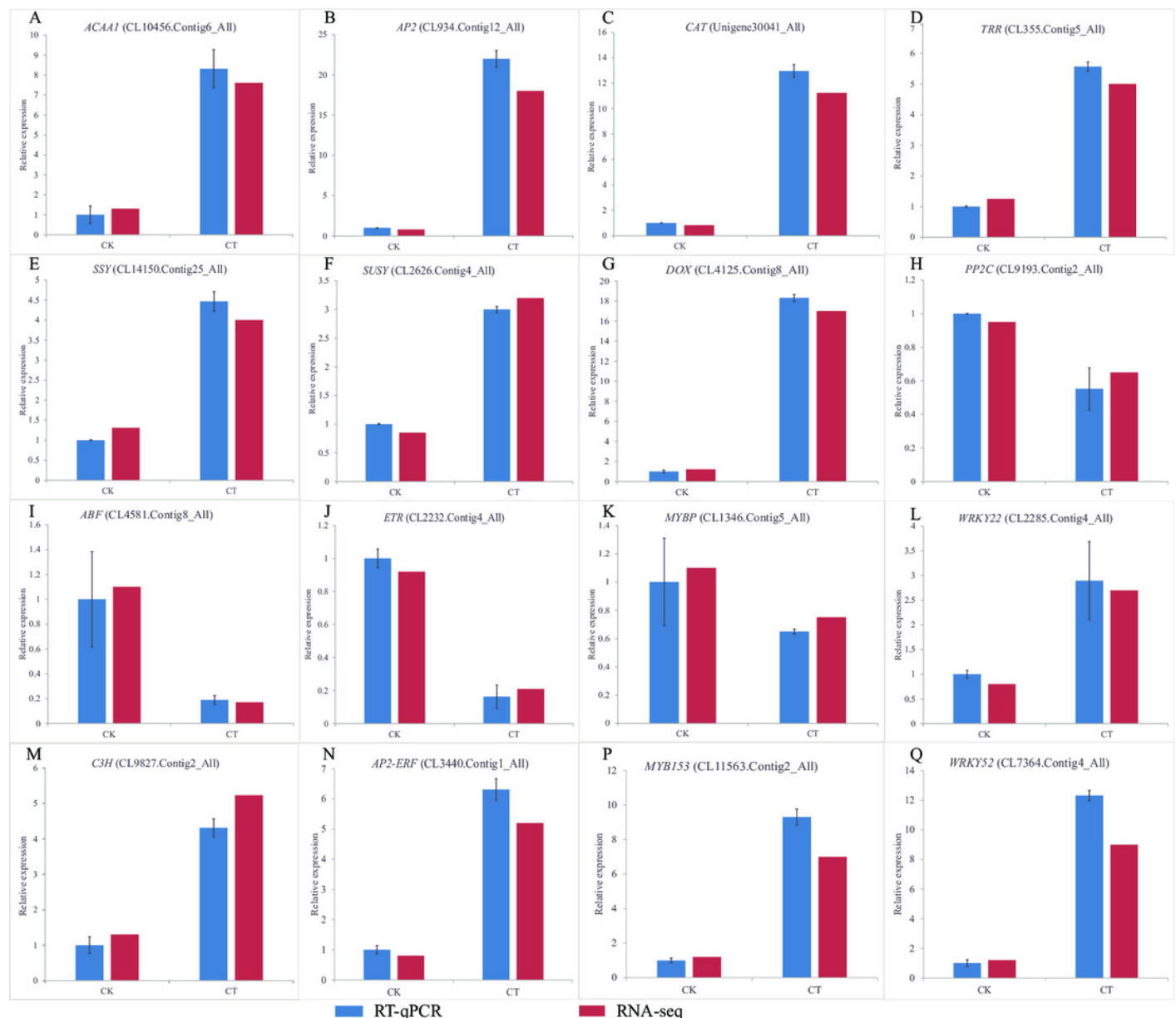


Figure 7

Hypothetical model of the events occurring in the *S. caseolaris* leaves under chilling stress.

