

# Spatial-temporal variability of *Mytilus galloprovincialis* Lamarck 1819 populations and their accumulated sediment in Northern Portugal (#52360)

1

Second revision

## Guidance from your Editor

Please submit by **7 Feb 2021** for the benefit of the authors (and your \$200 publishing discount) .



### Structure and Criteria

Please read the 'Structure and Criteria' page for general guidance.



### Raw data check

Review the raw data.



### Image check

Check that figures and images have not been inappropriately manipulated.

Privacy reminder: If uploading an annotated PDF, remove identifiable information to remain anonymous.

## Files

Download and review all files from the [materials page](#).

- 1 Tracked changes manuscript(s)
- 1 Rebuttal letter(s)
- 12 Figure file(s)
- 4 Table file(s)
- 1 Raw data file(s)




# Structure and Criteria

## Structure your review

The review form is divided into 5 sections. Please consider these when composing your review:

1. BASIC REPORTING
2. EXPERIMENTAL DESIGN
3. VALIDITY OF THE FINDINGS
4. General comments
5. Confidential notes to the editor






 You can also annotate this PDF and upload it as part of your review

When ready [submit online](#).





## Editorial Criteria

Use these criteria points to structure your review. The full detailed editorial criteria is on your [guidance page](#).





### BASIC REPORTING

-  Clear, unambiguous, professional English language used throughout.
-  Intro & background to show context. Literature well referenced & relevant.
-  Structure conforms to [Peerj standards](#), discipline norm, or improved for clarity.
-  Figures are relevant, high quality, well labelled & described.
-  Raw data supplied (see [Peerj policy](#)).

### EXPERIMENTAL DESIGN

-  Original primary research within [Scope of the journal](#).
-  Research question well defined, relevant & meaningful. It is stated how the research fills an identified knowledge gap.
-  Rigorous investigation performed to a high technical & ethical standard.
-  Methods described with sufficient detail & information to replicate.

### VALIDITY OF THE FINDINGS

-  Impact and novelty not assessed. Negative/inconclusive results accepted. *Meaningful* replication encouraged where rationale & benefit to literature is clearly stated.
-  All underlying data have been provided; they are robust, statistically sound, & controlled.
-  Speculation is welcome, but should be identified as such.
-  Conclusions are well stated, linked to original research question & limited to supporting results.

# Standout reviewing tips

3



The best reviewers use these techniques

## Tip

**Support criticisms with evidence from the text or from other sources**

## Example

*Smith et al (J of Methodology, 2005, V3, pp 123) have shown that the analysis you use in Lines 241-250 is not the most appropriate for this situation. Please explain why you used this method.*

**Give specific suggestions on how to improve the manuscript**

*Your introduction needs more detail. I suggest that you improve the description at lines 57- 86 to provide more justification for your study (specifically, you should expand upon the knowledge gap being filled).*

**Comment on language and grammar issues**

*The English language should be improved to ensure that an international audience can clearly understand your text. Some examples where the language could be improved include lines 23, 77, 121, 128 – the current phrasing makes comprehension difficult.*

**Organize by importance of the issues, and number your points**

1. Your most important issue
2. The next most important item
3. ...
4. The least important points

**Please provide constructive criticism, and avoid personal opinions**

*I thank you for providing the raw data, however your supplemental files need more descriptive metadata identifiers to be useful to future readers. Although your results are compelling, the data analysis should be improved in the following ways: AA, BB, CC*

**Comment on strengths (as well as weaknesses) of the manuscript**

*I commend the authors for their extensive data set, compiled over many years of detailed fieldwork. In addition, the manuscript is clearly written in professional, unambiguous language. If there is a weakness, it is in the statistical analysis (as I have noted above) which should be improved upon before Acceptance.*

# Spatial-temporal variability of *Mytilus galloprovincialis* Lamarck 1819 populations and their accumulated sediment in Northern Portugal

Catarina Ramos-Oliveira<sup>1, 2</sup>, Leandro Sampaio<sup>1, 2</sup>, Marcos Rubal<sup>Corresp., 1, 2</sup>, Puri Veiga<sup>1, 2</sup>

<sup>1</sup> CIIMAR Interdisciplinary Centre of Marine and Environmental Research, Matosinhos, Portugal

<sup>2</sup> Department of Biology, University of Porto, Porto, Portugal

Corresponding Author: Marcos Rubal  
Email address: marcos.garcia@fc.up.pt

*Mytilus galloprovincialis* is an ecosystem engineer that provides habitat and generates environmental heterogeneity, increasing biodiversity. Moreover, it is an economically important species representing 14% of the global production of marine bivalves. Natural drivers and the increase of anthropogenic pressures, such as sediment stress, influence its populations on rocky shores. Therefore, it is crucial to investigate its spatial and temporal patterns of variability because there is a lack of information about this species along the Iberian Peninsula. The objective of this study was to explore the spatial-temporal patterns of different *M. galloprovincialis* attributes along North of Portugal. For that purpose, six rocky shores were selected and sampled six times along the year 2019. The percentage of cover, density, spat density, condition index, clump thickness, size classes and clump sediment content were considered. Results showed the lack of seasonality in *M. galloprovincialis* along the North coast of Portugal. However, density, spat stage, clump thickness, condition index and size classes showed some temporal and spatial variability. The percentage cover and sediment content only significantly differed among shores. Our results indicated an absence of seasonality for all the studied variables, probably because temperature was always within the optimum range for this species and the abundance of food supply in the study area independently of the season. The accumulated sediment on mussel clumps did not show any temporal variability with only significant differences among shores. The accumulated sediment was composed mainly by medium and coarse sand and it was correlated with mussel average size, condition index, but especially with the mussel clump thickness.

# Spatial-temporal variability of *Mytilus galloprovincialis* Lamarck 1819 populations and their accumulated sediment in Northern Portugal

Catarina Ramos-Oliveira<sup>1,2</sup>, Leandro Sampaio<sup>1,2</sup>, Marcos Rubal<sup>1,2\*</sup>, Puri Veiga<sup>1,2</sup>

<sup>1</sup>CIIMAR Interdisciplinary Centre of Marine and Environmental Research of the University of Porto, Novo Edifício do Terminal de Cruzeiros do Porto de Leixões, Avenida General Norton de Matos, Matosinhos, Portugal

<sup>2</sup>Department of Biology, Faculty of Sciences, University of Porto, Porto, Portugal

Corresponding Author:

Marcos Rubal

Centre of Marine and Environmental Research of the University of Porto, Novo Edifício do Terminal de Cruzeiros do Porto de Leixões, Avenida General Norton de Matos S/N, 4450-208, Matosinhos, Portugal

Email address: marcos.garcia@fc.up.pt

## Abstract

*Mytilus galloprovincialis* is an ecosystem engineer that provides habitat and generates environmental heterogeneity, increasing biodiversity. Moreover, it is an economically important species representing 14% of the global production of marine bivalves. Natural drivers and the increase of anthropogenic pressures, such as sediment stress, influence its populations on rocky shores. Therefore, it is crucial to investigate its spatial and temporal patterns of variability because there is a lack of information about this species along the Iberian Peninsula. The objective of this study was to explore the spatial-temporal patterns of different *M. galloprovincialis* attributes along North of Portugal. For that purpose, six rocky shores were selected and sampled six times along the year 2019. The percentage of cover, density, spat density, condition index, clump thickness, size classes and clump sediment content were considered. Results showed the lack of seasonality in *M. galloprovincialis* along the North coast of Portugal. However, density, spat stage, clump thickness, condition index and size classes showed some temporal and spatial variability. The percentage cover and sediment content only significantly differed among shores. Our results indicated an absence of seasonality for all the studied variables, probably because temperature was always within the optimum range for this species and the abundance of food supply in the study area independently of the season. The

accumulated sediment on mussel clumps did not show any temporal variability with only significant differences among shores. The accumulated sediment was composed mainly by medium and coarse sand and it was correlated with mussel average size, condition index, but especially with the mussel clump thickness.

**Subjects** Ecology, Marine Biology

**Keywords** Ecosystem engineer, North east Atlantic, rocky shore, sediment stress.

## Introduction

Mussels are important organisms in intertidal systems (~~Seed & Suchanek, 1992; Seed, 1996~~) because they ~~control~~ biodiversity, sheltering, supporting and enhancing diverse assemblages of invertebrates (Leigh et al., 1987; ~~Seed, 1996~~). Therefore, mussels can be considered ecosystem engineers because they induce physical changes in the substrate and **provide suitable space and resources for different species of animals and macroalgae** (Thiel & Ullrich, 2002; Loehle, 2004; Prado & Castilla, 2006; Borthagaray & Carranza, 2007). The Mediterranean mussel *Mytilus galloprovincialis* Lamarck, 1819 is one of the most frequent and abundant native mussel species in the south Atlantic European and Mediterranean Sea rocky shores (Braby & Somero, 2006). Recently, Lynch et al. (2020), have detected a northward range expansion of *M. galloprovincialis* along Irish shores, probably as a result of global warming. Additionally, *M. galloprovincialis* is also a widespread invasive species in other regions like South Africa (De Moor & Bruton, 1988). Moreover, *M. galloprovincialis* is an economically important species because of its high production (Guo et al., 2018). Because of that, it is vulnerable to recreational and commercial harvesting (Smith & Murray, 2005). Aquaculture of marine bivalves accounts 14% of the global marine production ~~in tonnes~~ (Wijsman et al., 2019). However, for mussels this practice, requires the exploitation of wild populations, involving the collection of young mussels' larvae directly from the water or harvesting of small mussels (0.5-2 cm) from intertidal and subtidal beds (Conselleria de Pesca, Marisqueo y Acuicultura, 2000; Cáceres-Martínez & Figueras, 2007; Figueras, 2007). This practice affects not only mussel juveniles but also adult stocks because it slows down the recovery of mussels (Harris et al., 2003), and thus it may influence the whole communities associated with mussels (Veiga et al., 2020). Natural populations of *M. galloprovincialis*, are under the effects of natural and anthropogenic disturbances (Nicastro, McQuaid & Zardi, 2019), which can have a strong influence on natural population dynamics (UNEP, 2006). Intertidal populations of *M. galloprovincialis* often live in mechanically stressful environments, being affected by natural ecological drivers like changes of **temperature, salinity, concentration of suspended matter or phytoplankton** (Araújo et al., 2020) and the presence of filamentous algae that promote the larval colonization (Ceccherelli & Rossi, 1984). Among anthropogenic disturbances, coastal urbanisation is one of the most persistent and increasing threats due to an increase of ocean sprawl and high diversity of pollutants coming from industry and domestic products (Todd et al., 2019). Coastal urbanisation has proved to have negative effects on the abundance and size structure of intertidal *M. galloprovincialis* (Veiga et al., 2020). Other anthropogenic disturbances like harvesting or trampling have also proved to

have negative effects on mussels populations (Smith & Murray, 2005). Among the multiple stressors that can affect mussel populations, the sediment accumulated on rocky shores has been poorly studied. Airoidi (2003) suggests that sediment can interfere in the development of mussel beds, particularly the accumulation of sediment interferes with physical and biological processes that lead to a reduction of suitable habitats (Airoidi, 2003). The main negative effect described for sediment accumulation on mussel populations is the burial (e.g. Hutchison et al., 2016; Dos Santos et al., 2018) but that effect can be different among mussel species in function of their ability to emerge or resist burial (Zardi et al., 2008; Hutchison et al., 2016, 2020). Moreover, the sediment can be a reservoir of contaminants that can result toxic for marine animals (Long et al., 1996; Fichet, Radenac & Miramand, 1998). Finally, sediment accumulation can also modify the services provided by mussels modifying the invertebrate assemblage diversity associated to mussel beds and facilitating the colonisation of mussel beds by soft bottoms macro- and meiobenthic species (e.g. Dos Santos et al., 2018).

Studies about patterns of variation in time and space of natural populations and assemblages are a chief goal in ecology, especially when they include economically relevant species with a key ecological role like *M. galloprovincialis* (Levin, 1992; Underwood & Chapman, 2000). The understanding of variation in populations is essential to the management and conservation of species because, as natural and anthropogenic processes like sediment accumulation may be very variable in space and time, their effect on the population dynamics will also be very variable (Andrew & Mapstone, 2006; Levin, 1992; Underwood, 1996; Benedetti-Cecchi, 2000; Bertocci et al., 2012). Bivalve molluscs show high plasticity on their responses and adaptation to local conditions (Bayne & Widdows, 1978; Widdows et al., 1984; Tedengren et al., 1990; Navarro et al., 1991) so, their settlement and growth varies among regions, according to the local environment, but it can also vary along the year in response to oceanographic natural oscillations (Seed, 1976). In sedentary animals like mussels, their reproduction and growth are the only mechanisms to sustain populations (Seed, 1976). Consequently, exogenous and endogenous factors are crucial for controlling physiological rates and the reproduction (Orban et al., 2002; Nsgarajan, Lea & Goss-Custard, 2006, Seed, 1976). Therefore, knowledge of the natural variability in time and space is decisive to understand population dynamics (Underwood, 1981) and for the management and conservation of the stocks of commercially exploited species, as well as the services provided by those species.

Nowadays, there is a lack of information about the spatial-temporal variability of *M. galloprovincialis* populations along the Atlantic coast of the Iberian Peninsula, where this species plays key ecological and economical roles. Similarly, the ability of *M. galloprovincialis* clumps to accumulate sediment on rocky shores is almost unexplored. The main aims of this study are to fill these gaps of knowledge and to explore the spatial-temporal patterns of *M. galloprovincialis*, and accumulated sediments on their clumps, along rocky shores in the North of Portugal. Different variables will be considered: density, spat stage, percentage cover, clump thickness, condition index and different size classes of mussels to achieve these objectives.

Moreover, the spatial-temporal patterns of sediment accumulation in mussel clumps and its relationships with the mussel population attributes will be examined.

# Materials & Methods

## Study area

The study was done between January 2019 and December 2019 and included six rocky shores along 90 km of the Northern Portuguese coast: Aguda (N 41°04246', W 8°653254'), Valadares (N 41°089167', W 8°658374'), Cabo do Mundo (N 41°225741', W 8°717976'), Carreço (N 41°742040', W 8°878418'), Forte do Cão (N 41°798244', W 8°874848') and Moledo (N 41°822605', W 8°874894') (Fig. 1). Along the Northern Portuguese coast, intertidal area varies from soft to hard bottoms but they mostly present a mixture of both substrates. Sampling was done during low tide in the mid tide level of the rocky shores, that typically is dominated by the species *M. galloprovincialis* (Veiga et al., 2020). In the North of Portugal, the spring – summer and the autumn – winter seasons are characterized by strong differences in mean monthly precipitation, air and water temperature, hydrodynamic conditions, wave height and storm frequency (Dias et al., 2002; Bertocci et al., 2012). The coastline is largely straight and is exposed to wave action, which varies strongly with seasons (Dias et al., 2002). In the spring – summer period the typical wave heights are between 1 and 3 m, with periods of 11-13 s (Dias et al., 2002) and swells direction generally is from W and NW. In the autumn - winter period, the waves can reach around 7 m with periods of 13-18 s (Dias et al., 2002). The tidal regime of the study area is semidiurnal with the largest spring tides of 3.5 - 4.0 m. Moreover, the studied area is subjected to a seasonal upwelling that provides nutrients and increases the primary production in the water column during spring and summer months (Lemos and Pires, 2004). Along the sampling year 2019, in the autumn – winter period, mean value of air temperature was 11.98° C, with values ranging between 3.31° C and 22.42° C. Mean precipitation was 77.51 mm, with values ranging between 34.5 mm and 145.75 mm, being December the month with more precipitation. In the spring – summer months, mean values of air temperature were 19.16° C, ranging between 4.13° C and 29.70° C. During these months, the mean precipitation was 31.03 mm, with values ranging between 3.3 mm and 117.2 mm (<http://www.ipma.pt/pt/index.html>). Monthly values for seawater temperature, salinity and wave height at the sampling area can be found in Figure 2. Values showed on Figure 2 were measured every 60 minutes by an oceanographic buoy (model Seawach) placed at 42.12°N and 9.43°W. Values of temperature and wave height were measured during 2019 but, for salinity there are many lacks of data for 2019 and thus, we included the data of 2018. All the data were obtained from the public repository of Puertos del Estado webpage (<http://www.puertos.es/es-es/oceanografia/Paginas/portus.aspx>).

## Sampling

The sampling design included two seasons and three sampling dates within each season: spring - summer (April, June and September) and autumn - winter (January, October and December). On each of these dates, the six studied shores were visited, and at each shore, two sites separated by 10 s of meters were randomly selected. At each site, the percentage of mussel's cover was

calculated in four quadrats (50 x 50 cm). Cover was estimated by dividing each quadrat into 25 sub-quadrates of 10 x 10 cm, attributing a scale from 0, with an absence of mussels, to 4, when all the quadrat (10 x 10 cm) were covered by mussels, and accumulation up the 25 estimates (Dethier et al., 1993). In addition, four measures of mussel clump thickness were randomly taken within each of the four 50 x 50 cm quadrats by introducing a rigid ruler until reaching the bottom of the clump. Within each one of the 50 x 50 cm quadrats, one sample of 10 x 10 cm was collected, by scraping all the mussels in this area, and stored in labelled bags. These samples were preserved in a mixture of formalin 4% with rose of Bengal neutralised with sodium tetraborate anhydrous (Borax). In the laboratory, samples were washed in a tower of sieves of 1000 µm, 500 µm, 250 µm, 125 µm and 63 µm mesh size. For each sample, twenty random mussels from the 1000 µm sieve were separated to be measured with a calliper. Measured mussels were grouped in the following size classes: Class 1: <10 mm, Class 2: 10-20 mm, Class 3: 20-30 mm, Class 4: 30-40 mm, Class 5: 40-50 mm and Class 6: >50 mm. Additionally, 10 mussels per replicate were opened with a surgical blade and the shell was separated from the soft body. Afterwards, they were dried and weighed to calculate the condition index as the ratio between soft tissues dry weight and the shell dry weight. Residues retained in the sieves of 500 µm and 1000 µm were sorted in a dissection microscope and all the mussels were collected and counted. To evaluate mussels in the spat stage (i.e. mussels with size between 500 and 1000 µm), as a proxy of recruitment, the number of mussels retained in the 500 µm mesh size was counted. The amount of sediment retained at each mesh size (1000 µm, 500 µm, 250 µm, 125 µm and 63 µm) was evaluated by drying the sieve content at 65°C for about 12h and weighting.

# **Data analyses**

Differences in the total density, spat density, percentage cover, mussel size classes and the amount of sediment retained on mussel clumps (total and different sediment sizes) were examined with analyses of variance (ANOVA). These analyses were based on a four way model including Season (Se) with two 2 levels: autumn – winter and spring – summer, as a fixed orthogonal factor, Date (Da) with 3 levels, as a random factor nested in Se, Shore (Sh) with 6 levels: Aguda, Valadares, Cabo do Mundo, Moledo, Carreço and Forte do Cão, as a fixed orthogonal factor and Site (Si) with 2 levels, as a random factor nested in all the previous factors, considering 4 replicates per site. ANOVA was also used to test for differences on thickness and condition index, but these analyses were based on a five-way model, including all the factors above mentioned and Plot (Pl), as an additional random factor, nested in Se x Da x Sh x Si, with 4 and 10 replicates for thickness and condition index, respectively. Cochran's C test was done to test for homogeneity of variances. In some cases, when Cochran's C test was significant ( $p < 0.05$ ) data were  $\ln(X+1)$  transformed with the objective of removing heterogeneity of variances. When transformation was not possible, untransformed data were analysed and results were considered only if significant at  $p < 0.01$ , to compensate for the increased probability of type I error (Underwood, 1997). Whenever ANOVA demonstrated significant differences ( $p < 0.05$ ) a post hoc Student-Newman-Keuls (SNK) test was done to explore differences. Finally, in order to explore the relationship between total sediment content and mussel descriptors, rank correlation

analyses were done for each descriptor. Due to the non-normal distribution of the data, Spearman's rank correlation was used.

# Results

## Spatial and temporal patterns of mussel descriptors

ANOVA results for the percentage cover detected significant differences among Shores (Table 1). Post hoc analysis was not able to provide an alternative hypothesis, probably due to its lower power (Underwood, 1997), (Fig. 3). For total and spat density, the interaction between shore and date (Sh x Da) was significant (Table 1). Post hoc analysis for total density showed a homogeneous pattern for the first three dates (Jan, Apr, Jun) but, significant differences were detected in the last three months (Sep, Oct, Dec) (Fig. 4). Results for spat stage showed a similar pattern as total density, but only Aguda showed significant differences in the last two months (Oct, Dec) (Fig. 5).

Condition index and clump thickness showed significant differences for the interaction between shore and date (Sh x Da) (Table 2). Post hoc analysis showed significant differences in the first four months (Jan, Apr, Jun, Sep). On the other hand, in October, Valadares showed significantly higher values than the remaining shores (Fig. 6). For bed thickness, post hoc analysis showed significant differences in the first two months (Jan, Apr) for several shores (Fig. 7).

The size classes 1 and 3 did not show significant differences among seasons or shores (Table 3). However, ANOVA detected significant differences for the interaction between shore and date (Sh x Da) in Classes 2, 4, 5 and 6 (Table 3). The post hoc analyses showed significant differences between shores in June and December for Class 2 (Fig. S1). For Class 4, significant differences were detected in June and October (Fig. S2). For the Class 5, post hoc analysis pointed out differences in January, April, September and December, (Fig. S3). For Class 6, post hoc analysis showed significant differences in January, October. (Fig. S4).

The sediment content in clumps differed significantly among shores both for total sediment and different sediment sizes (Table 4) (Fig. 8).

## Relationship between sediment content in clumps and different mussel attributes

Spearman's rank correlations showed that total sediment content significantly increased with mussel clumps thickness ( $R=0.551$ ,  $p<0.01$ ). Moreover, a significant positive correlation was found between total sediment content and condition index ( $R=0.136$ ,  $p<0.05$ ) and with the average mussel size ( $R=0.18$ ,  $p<0.05$ ) but the correlation coefficients were much lower than that obtained for thickness. However, correlation between total sediment and cover ( $R=0.0356$ ,  $p>0.05$ ), density ( $R=-0.05$ ,  $p>0.05$ ) or spat stage ( $R=-0.0345$ ,  $p>0.05$ ) were not significant.

# Discussion

This study documented the lack of seasonality for all the studied descriptors in *M. galloprovincialis* along the North coast of Portugal. However, significant differences were shown on the term Sh x Da for density, spat stage, clump thickness, condition index and size classes, demonstrating that drivers shaping these descriptors have limited effects at spatial (i.e.

shores) and temporal (i.e. date) scales. Moreover, percentage cover and sediment content on mussel clumps showed significant differences just among shores indicating that the different drivers that could influence these descriptors, have a constant effect along the explored time scales (Season and Date), changing only at spatial scale.

The comparison of our results with previous studies is difficult due to the lack of information about spatial-temporal variability of *M. galloprovincialis* populations in the Iberian Peninsula. However, studies done in other regions (e.g. South-west England and Italian coast) demonstrated differences between seasons for the condition index of *M. galloprovincialis* (Orban et al., 2002; Ivankovic et al., 2005). Moreover, studies on benthic assemblage seasonality done in North of Portugal were focused on tide pools (Rubal et al., 2011; Bertocci et al., 2012) and pointed out that benthic assemblages (dominated by macroalgae) showed significant differences between seasons. Results of these studies contrast with our findings for *M. galloprovincialis* suggesting that drivers that shape mussel populations probably are different to those influencing tide pool macroalgae assemblages. In contrast with our results, other invertebrates considered as ecosystem engineers, such as *Sabellaria* worms (Gravina et al., 2018), showed seasonality with a growing phase beginning in summer until fall, a degeneration phase in winter and spawning in spring (Peharda et al., 2007; Gravina et al., 2018).

*Mytilus galloprovincialis* showed a homogenous pattern along time for percentage cover. The absence of seasonality or other temporal variability in this descriptor suggests that mussels occupy similar areas of rocky shores along the year, independently of the season and date. The study by Boaventura and Re (2002), done along the Portuguese coast, showed that the abundance of *M. galloprovincialis* declined from North to South of Portugal; this is in agreement with the high values of the percentage cover found in our study. The percentage cover is determined by the abundance and size of individuals, which is affected by growth, mortality and recruitment (Roughgarden, Iwasa & Baxter, 1985; Petraitis, 1995). Therefore, results for the percentage cover are in concordance with our results for density and spat stage that did not show any seasonality. The constant amount of spat stage along the year suggests a constant recruitment and spawning for *M. galloprovincialis* in the studied area. There are many studies about the reproductive cycle of *M. galloprovincialis* showing contrasting conclusions (e.g. Seed, 1976; Nsgarajan and Lea, 2006). Seed (1976) suggests that spawning in *Mytilus* is regulated by a combination of external and internal factors but, the variation of seawater temperature is the most crucial one and that low temperatures reached in winter and autumn can inhibit mussel spawning. Seed (1976) pointed out that optimum seawater temperature for the genus *Mytilus* ranges between 10° C and 20° C, which can influence not just the spawning but also the growth. For the specie *M. galloprovincialis* the optimal temperature for the population growth rate ranges between 13°C and 18°C (Yoann & Cédric, 2018). As temperature is different between regions and may change considerably from year to year (Seed, 1976), the reproductive cycle of *M. galloprovincialis* can present different seasonal patterns according to the studied region and even among years. On the other hand, the study by Ceccherelli and Rossi (1984) does not exclude the probability of spat stage occurs independently at different times along the whole year, with

different values among months. Therefore, *M. galloprovincialis* can present different reproductive phenology at different regions (Ceccgerelli & Rossi, 1984). Constant recruitment and reproduction along the year in our studied area is possible since seawater temperature is around the optimum range described by Yoann & Cédric, 2018 during all year. The few significant differences detected for total and spat abundance could be the result of particular disturbances such as harvesting or trampling.

The condition index of mussels is affected through a variety of intrinsic and extrinsic factors, like food availability, sea temperature, salinity and gametogenic cycle (Okumus & Stirling, 1998). Many studies (e.g. Çelik et al., 2012) state that the condition index shows a seasonal variability; achieving a maximum during gonadal development and decreases when spawning period starts. However, other studies (e.g. Orban et al., 2002) showed that the condition index registered a similar value along the year, in concordance with our results. The lack seasonal variability suggest that mussels from north of Portugal do not have a defined period for gonadal development and spawning. Therefore, mussels seem to be able to spawn along the whole year, explaining in this way the constant recruitment that suggest the spat density results. As percentage cover, clump thickness provides information about the habitat furnished by *M. galloprovincialis* for the other species. The percentage cover gives information about the habitat provided by *M. galloprovincialis* along the shore (horizontal) while thickness depends on the accumulation of different layers of mussels, providing three-dimensional habitat (vertical). The clump thickness of mussel populations in the intertidal is strongly influenced by wave action (Zardi, McQuaid & Nicastro, 2007). Therefore, the magnitude of the hydrodynamic forces along the year can affect the thickness of mussel clumps due to dislodgment of thick clumps during storms (Zardi et al., 2006). Results showed that mussel clumps thickness differs between shores and dates but not between seasons. Therefore, the wave height seems to play a minor role in shaping the clump thickness since the wave height, in the studied area, has a clear seasonal pattern (i.e. higher during Winter-Autumn) in contrast with our findings for clump thickness.

The size classes also showed absence lack of seasonality. The growth of mussels can be assessed by the size, which usually is related to age, but it is also dependent on environmental conditions (Seed, 1976). Peharda et al. (2007) showed that the growth of *M. galloprovincialis* is slow at temperatures above 21°C and at temperatures below 10°C, but also found that food availability can be an important driver for the growth of mussels. The lack of seasonal pattern on the abundance of different size classes can be the result of a continuous recruitment and growth due to optimal environmental conditions on the studied area. In general the lack of seasonal changes on the *M. galloprovincialis* population on the studied area contrast with the seasonal changes on water and air temperature, wave action or upwelling events related with the considered seasons. However, the recorded changes on temperature in the North of Portugal are around the optimum range of *M. galloprovincialis*. Moreover, Abrantes (1999) showed significant differences in the phytoplankton biomass, the main food source for *M. galloprovincialis*, between August and January along the coast of Portugal. Despite a reduction on the phytoplankton biomass during winter, this reduction is not so marked as in the centre or south of Portugal (Abrantes, 1999).

Therefore, the availability of food during the winter in the north of Portugal may explain the high percentage cover in the north observed by Boaventura et al. (2002) and the lack of seasonal variability observed in our study.

However, significant differences were detected among shores or among shores and dates. These differences could be caused by non-seasonal physical and biological processes such as trampling, harvesting, pollution events, predation, or parasitism that could vary between dates and shores independently of the season. For example, the effects of harvesting and trampling could also vary among shores, for instance, in function of their accessibility to humans (Smith & Murray, 2005; Rius, Kaehler & McQuaid, 2006; McPhee, 2017). However, differences in the morphology or the orientation to wave exposure of the studied shores could be among plausible drivers for the descriptors of percentage cover and sediment content that only showed significant differences between shores.

Results of our study also showed a lack of variability on sediment accumulation along the two studied temporal scales (i.e. season and date), although significant differences were found between shores. Similar results were found in Argentina (Dos Santos et al., 2018) where no seasonal pattern in the sediment accumulated on mussel beds was found. However, the amount of sediment that reaches the shores can vary seasonally, as found by previous studies on South Africa (Zardi et al., 2006) and Argentina (Dos Santos et al., 2018). Therefore, despite the variable supply of sediments, results of our study and that by Dos Santos et al. (2018) suggest a limited and constant capacity of mussel beds to retain sediment under natural conditions. However, the ability to accumulate sediment showed significant differences among rocky shores in our study. These results contrast with those found by Dos Santos et al. (2018) where no significant differences were found on the sediment accumulated on mussel beds between their studied sites. In our study we have considered a broader spatial scale than that in the study by Dos Santos et al. (2018). Therefore, at each shore, local currents, bottom topography, tidal speed and different sources of sediment may have resulted in the heterogeneous spatial pattern found. Moreover, our results showed a positive relationship between sediment accumulation and mean mussel size, condition index and clump thickness, however, the correlation coefficients of average mussel size and condition index were very low and only clump thickness, with a correlation coefficient above 0.5, may play a relevant role in shaping sediment accumulation. Results also showed that 500  $\mu$ m and 1000  $\mu$ m sediment size categories were the most abundant ones. This observation, is in agreement with the sediment size found in some northern Portuguese sandy beaches (Veiga et al. 2014) suggesting that sandy beaches and rocky shores receive sediment from the same or similar sources. It is also noticeable the low amount of 63  $\mu$ m sediment accumulated because burial by fine sediments induces higher mortality than burial by coarse sediments (Hutchison et al., 2016). Moreover, Zardi et al. (2006) showed that *M. galloprovincialis* has higher tolerance to burial than *Perna perna*, probably because its larger palpal labs are more efficient sorting particles and avoiding gill damage.

## Conclusions

The lack of seasonality and reduced temporal variability found for *M. galloprovincialis* in the study area may be due to the optimal water temperature and food availability along the whole year. The lack of temporal variability on the amount of sediment accumulated on mussel clumps suggest constant input of sediment that only differs among shores and may be influenced by clump thickness.

## Acknowledgements

We are also grateful to two anonymous referees for helpful comments and suggestions, which greatly improved this paper.

## References

- Abrantes F, Moita MT. 1999. Water column and recent sediment data on diatoms and coccolithophorids off Portugal confirm sediment record of upwelling events. *Oceanologica* 22(3):319–336 DOI: 10.1016/S0399-1784(99)80034-6
- Airolidi L. 2003. The effects of sedimentation on rocky coast assemblages. *Oceanography and Marine Biology* 41:161–236 DOI: 10.1201/9780203180570-23
- Andrew NL, Mapstone BD. 2006. Sampling and the description of spatial pattern in marine ecology. *Oceanography and Marine Biology* 52: 39–90 DOI: 10.1016/0198-0254(88)92605-2
- Araújo J, Soares F, Medeiros A, Bandarra NM, Freire M, Falcão M, Pousão-Ferreira P. 2020. Depth effect on growth and fatty acid profile of Mediterranean mussel (*Mytilus galloprovincialis*) produced on a longline off south Portugal. *Aquaculture International* 28: 927–946 DOI:10.1007/s10499-019-00504-0
- Bayne BL, Widdows J. 1978. The physiological ecology of two populations of *Mytilus edulis* L. *Oecologia* 37,137–162 DOI: 10.1007/BF00344987
- Benedetti-Cecchi L. 2000. Priority effects, taxonomic resolution, and the prediction of variable patterns of colonisation of algae in littoral rock pools. *Oecologia* 123:265–274 DOI: 10.1007/s004420051013
- Bertocci I, Araújo R, Incera M, Arenas F, Pereira R, Abreu H, Larsen K, Sousa-Pinto I. 2012. Benthic assemblages of rock pools in northern Portugal : seasonal and between-pool variability. *Scientia Marina* 76(4):781–789 DOI: 10.3989/scimar.03669.21
- Boaventura D, Ré P, Fonseca LC, Hawkins SJ. 2002. Intertidal rocky shore communities of the continental Portuguese coast : Analysis of distribution patterns. *Marine Ecology* 23(1):69–90 DOI: 10.1046/j.1439-0485.2002.02758.x
- Borthagaray AI, Carranza A. 2007. Mussels as ecosystem engineers: their contribution to species richness in a rocky littoral community. *Acta Oecologica* 31:243–250 DOI: 10.1016/j.actao.2006.10.008

- Braby CE, Somero GN. 2006. Ecological gradients and relative abundance of native (*Mytilus trossulus*) and invasive (*Mytilus galloprovincialis*) blue mussels in the California hybrid zone. *Marine Biology* 148: 1249–1262 DOI: 10.1007/s00227-005-0177-0
- Cáceres-Martínez J, Figueras A. 2007. Fijación de los juveniles del mejillón: fijación del mejillón. In: Figueras A, ed. *Biología y Cultivo del Mejillón (Mytilus galloprovincialis) en Galicia*. CSIC - CSIC Press (Spain) 72–93.
- Ceccgerelli VU, Rossi R. 1984. Settlement , growth and production of the mussel *Mytilus galloprovincialis*. *Marine Ecologic Progress Series* 16:173–184 DOI: 10.3354/meps016173
- Çelik MY, Karayücel S, Karayücel I, Öztürk R, Eyüboğlu B. 2012. Meat yield, condition index and biochemical composition of mussels (*Mytilus galloprovincialis* Lamarck, 1819) in Sinop, South of the Black Sea. *Journal of Aquatic Food Product Technology* 21:198–205 DOI: 10.1080/10498850.2011.589099
- Consellería de Pesca, Marisqueo y Acuicultura. 2000. ORDEN de 26 de Octubre de 2000 por la que se regula la extracción de semilla de mejillón en bancos naturales., pp. 15681–15684. *Diario Oficial de Galicia* 228: 15681–15684  
[https://www.xunta.gal/dog/Publicados/2000/20001124/Anuncio15CB6\\_es.html](https://www.xunta.gal/dog/Publicados/2000/20001124/Anuncio15CB6_es.html) (accessed 5 July 2020)
- De Moor, IJ, Bruton, MN (Compilers). 1988. Atlas of alien and translocated indigenous aquatic animals in southern Africa. National Scientific Programmes Unit: CSIR, SANSP Report 144, 1988, pp 317. Available at <http://hdl.handle.net/10204/2416> (accessed 27 August 2020)
- Dethier MN, Graham ES, Cohen S, Tear LM. 1993. Visual versus random-point percent cover estimations: “objective” is not always better. *Marine Ecology Progress Series* 96:93–100 DOI: 10.3354/meps096093
- Dias JMA, Gonzalez R, Garcia C, Diaz-del-Rio V. 2002. Sediment distribution patterns on the Galicia-Minho continental shelf. *Oceanography* 52:215–231 DOI: 10.1016/S0079-6611(02)00007-1
- Dos Santos EP, Carcedo MC, Zotelo C, Fiori SM. 2018. Effects of erosion-accretion processes on a community dominated by *Brachidontes rodriguezii* (Mollusca: Mytilidae) on a rocky outcrop of the South Atlantic coast. *Journal of Marine Systems* 187:146-155 DOI: 10.1016/j.jmarsys.2018.07.006
- Fichet D, Radenac G, Miramand P. 1998. Experimental studies of impacts of harbour sediments resuspension to marine invertebrates larvae: bioavailability of Cd, Cu, Pb and Zn and toxicity. *Marine Pollution Bulletin* 36(7–12): 509–518 DOI: 10.1016/S0025-326X(97)00190-2
- Figueras AJ. 2007. *Biología y Cultivo del Mejillón (Mytilus galloprovincialis) en Galicia*. CSIC - CSIC Press
- Garner YL, Litvaitis MK. 2013. Effects of wave exposure, temperature and epibiont fouling on byssal thread production and growth in the blue mussel, *Mytilus edulis*, in the Gulf of Maine. *Journal of Experimental Marine Biology and Ecology* 446:52–56 DOI: 10.1016/j.jembe.2013.05.001

- Gravina MF, Cardone F, Bonifazi A, Bertrandino MS, Chumienti G, Longo C, Marzano CN, Moretti M, Lisco S, Moretti V, Corriero G, Giangrande A. 2018. *Sabellaria spinulosa* ( Polychaeta , Annelida ) reefs in the Mediterranean Sea : Habitat mapping, dynamics and associated fauna for conservation management. *Estuarine, Coastal and Shelf Science* 200:248–257 DOI: 10.1016/j.ecss.2017.11.017
- Guo C, Chen Y, Li W, Xie S, Lek S, Li Z. 2018. Food web structure and ecosystem properties of the largest impounded lake along the eastern route of China’s South-to-North Water Diversion Project. *Ecological Informatics* 43:174–184 DOI: 10.1016/j.ecoinf.2017.12.003
- Harris J, Branch G, Sibiya C, Bill C. 2003. The Sokhulu subsistence mussel-harvesting project: co-management in action. Chapter 4. In: Hauck M, Sowman M, eds. *Waves of Change: coastal and fisheries co-management in Southern Africa*. Cape Town: UCT Press, 61–98.
- Hutchison ZL, Green DH, Burrows MT, Jackson AC, Wilson B, Last KS. 2020. Survival strategies and molecular responses of two marine mussels to gradual burial by sediment. *Journal of Experimental Marine Biology and Ecology* 527:151364 DOI: 10.1016/j.jembe.2020.151364
- Hutchison ZL, Hendrick VJ, Burriwa MT, Wilson B, Last KS. 2016. Buried Alive: The behavioural response of the mussels, *Modiolus modiolus* and *Mytilus edulis* to dudden burial by sediment. *PloS One* 11(3): e0151471 DOI: 10.1371/journal.pone.0151471
- Instituto Português do Mar e da Atmosfera. Boletins Climatológicos. Available at <http://www.ipma.pt/pt/index.html> (accessed 5 June 2020)
- Ivankovic D, Pavicic J, Erk M, Filipovic-Marijic V, Raspor B. 2005. Evaluation of the *Mytilus galloprovincialis* Lam. . digestive gland metallothionein as a biomarker in a long-term field study : Seasonal and spatial variability. *Marine Pollution Bulletin* 50:1303–1313 DOI: 10.1016/j.marpolbul.2005.04.039.
- Leigh ECJr, Paine RT, Quinn JF, Suchanek TH. 1987. Wave energy and intertidal productivity. *Proceedings of the National Academy of Sciences of the United States of America* 84:1314–1318 DOI: 10.1073/pnas.84.5.1314
- Lemos RT, Pires H. 2004. The upwelling regime off the west Portuguese coast, 1941-2000. *International Journal of Climatology* 24:511–524 DOI: 10.1002/joc.1009
- Levin SA. 1992. The problem of pattern and scale in ecology. *Ecological society of America* 73:1943–1967 DOI: 10.2307/1941447
- Loehle C. 2004. Challenges of ecological complexity. *Ecological Complexity* 1:3–6 DOI: 10.1016/j.ecocom.2003.09.001
- Long ER, Robertson A, Wolfe DA, Hameedi J, Sloane GM. 1996. Estimates of the spatial extent of sediment toxicity in major US estuaries. *Environmental Science & Technology* 30:3585–3592 DOI: 10.1021/es9602758
- Lynch SA, Coghlan A, Leary BO, Morgan E, Culloty SC. 2020. Northward establishment of the mediterranean mussel *Mytilus galloprovincialis* limited by changing climate. *Biology Invasions* 22:2725–2736 DOI: 10.1007/s10530-020-02294-6
- McPhee DP. 2017. Urban recreational fisheries in the australian coastal zone: The sustainability

- challenge. *Sustainability* 9:1–12 DOI: 10.3390/su9030422
- Navarro E, Iglesias JIP, Camacho AP, Labarta U, Beiras R. 1991. The physiological energetics of mussels (*Mytilus galloprovincialis* Lmk.) from different cultivation rafts in the Ria de Arosa (Galicia,N.W. Spain). *Aquaculture*, 94:197–212 DOI: 10.1016/0044-8486(91)90118-Q
- Nicastro KR, McQuaid CD, Zardi GI. 2019. Between a rock and a hard place : combined effect of trampling and phototrophic shell-degrading endoliths in marine intertidal mussels. *Marine Biodiversity* 49:1581–1586 DOI: 10.1007/s12526-018-0924-3
- Nsgarajan R, Lea SWG, Goss-Custard J. 2006. Seasonal variations in mussel , *Mytilus edulis* L . shell thickness and strength and their ecological implications. *Journal of Experimental Marine Biology and Ecology* 339:241–250 DOI: 10.1016/j.jembe.2006.08.001
- Okumus I, Stirling HP. 1998. Seasonal variations in the meat weight, condition index and biochemical composition of mussels (*Mytilus edulis* L.) in suspended culture in two Scottish sea lochs. *Aquaculture* 159(3–4):249–261 DOI: 10.1016/S0044-8486(97)00206-8
- Orban E, Lena G Di, Nevigato T, Casini I, Marzetti A, Caproni R. 2002. Seasonal changes in meat content, condition index and chemical composition of mussels (*Mytilus galloprovincialis*) cultured in two different Italian sites. *Food Chemistry* 77:57–65 DOI: 10.1016/S0308-8146(01)00322-3
- Peharda M, Zupan I, Baveevié L, Frankié A, Klanjsflec T. 2007. Growth and condition index of mussel *Mytilus galloprovincialis* in experimental integrated aquaculture. *Aquaculture Research* 38:1714–1720 DOI: 10.1111/j.1365-2109.2007.01840.x
- Petratis PS. 1995. The role of growth in maintaining spatial dominance by mussels (*Mytilus edulis*). *Ecology* 76:1337–1346 DOI: 10.2307/1940940
- Prado L, Castilla JC. 2006. The bioengineer *Perumytilus purpuratus* (Mollusca: Bivalvia) in central Chile: biodiversity, habitat structural complexity and environmental heterogeneity. *Journal of the Marine Biological Association of the UK* 86:417–421 DOI: 10.1017/S0025315406013282
- Rius M, Kaehler S, McQuaid CD. 2006. The relationship between human exploitation pressure and condition of mussel populations along the south coast of South Africa. *South African Journal of Science* 102:130–136
- Roughgarden J, Iwasa Y, Baxter C. 1985. Demographic-theory for an openmarine population with space-limited recruitment. *Ecology* 66:54–67 DOI: 10.2307/1941306
- Rubal M, Veiga P, Vieira R, Sousa-Pinto I. 2011. Seasonal patterns of tidepool macroalgal assemblages in the North of Portugal . Consistence between species and functional group approaches. *Jornal of Sea Research* 66:187–194 DOI: 10.1016/j.seares.2011.07.003
- Seed R. 1976. Ecology. In: Bayne BL ed. *Marine mussels: their ecology and physiology*. Cambridge: Cambridge University Press, , 13–67.
- Seed R. 1996. Patterns of biodiversity in the macro-invertebrate fauna associated with mussel patches on rocky shores. *Journal of the Marine Biological Association of the UK* 76:203–210 DOI: 10.1017/S0025315400029131

- Seed R, Suchanek TH. 1992. Population and community ecology of *Mytilus*. In: Gosling E, ed. *The mussel Mytilus: ecology, physiology, genetics and culture*. London: Elsevier, , 87–169.
- Smith JR, Murray SN. 2005. The effects of experimental bait collection and trampling on a *Mytilus californianus* mussel bed in southern California. *Marine Biology* 147:699–706 DOI: 10.1007/s00227-005-1619-4
- Tedengren M, Andr  C, Johannesson K, Kautsky N. 1990. Genotypic and phenotypic differences between Baltic and North Sea populations of *Mytilus edulis* evaluated through reciprocal transplantations. III. *Physiology*. *Marine Ecology Progress Series* 59:221–227 DOI: 10.3354/meps059203
- Thiel M, Ullrich N. 2002. Hard rock versus soft bottom: the fauna associated with intertidal mussel beds on hard bottoms along the coast of Chile, and considerations on the functional role of mussel beds. *Helgoland Marine Research* 56:21–30 DOI: 10.1007/s10152-001-0098-3
- Todd PA, Heery EC, Loke LHL, Thurstan RH, Kotze DJ, Swan C. 2019. Towards an urban marine ecology: characterizing the drivers, patterns and processes of marine ecosystems in coastal cities. *OIKOS* 128:1215–1242 DOI: 10.1111/oik.05946
- Underwood AJ. 1981. Structure of a rocky intertidal community in New South Wales: patterns of vertical distribution and seasonal changes. *Journal of Experimental Marine Biology and Ecology* 51:57–85 DOI: 10.1016/0022-0981(81)90154-4
- Underwood AJ. 1997. *Experiments in ecology: their logical design and interpretation using analysis of variances*. Cambridge: Univeristy Press
- Underwood AJ, Chapman MG. 1996. Scales of spatial patterns of distribution of intertidal invertebrates. *Oecologia* 107:212–224 DOI: 10.1007/BF00327905
- Underwood AJ, Chapman MG, Connell SD. 2000. Observations in ecology: you can’t make progress on processes without understanding the patterns. *Journal of Experimental Marine Biology and Ecology* 250:97–115 DOI: 10.1016/S0022-0981(00)00181-7
- UNEP 2006. Marine and coastal ecosystems and human wellbeing: A synthesis report based on the findings of the Millennium Ecosystem Assessment. UNEP. Available at <https://www.unenvironment.org/resources/report/marine-and-coastal-ecosystems-and-human-well-being-synthesis-report-based-findings> (accessed 9 August 2020)
- Veiga P, Ramos-Oliveira C, Sampaio L, Rubal M. 2020. The role of urbanisation in affecting *Mytilus galloprovincialis*. *PLoS ONE* 15(5): e0232797. DOI: 10.1371/journal.pone.0232797
- Widdows J, Donkin P, Salked PN, Cleary JJ, Lowe DM, Evans SV, Thompson PE. 1984. Relative importance of environmental factors in determining physiological differences between two populations of mussels (*Mytilus edulis*). *Marine Ecology Progress Series* 17:33–47 DOI: 10.3354/meps017033
- Wijsman JWM, Troost K, Fang J, Roncarati A. 2019. Global production of marine bivalves. Trends and challenges. In: Smaal A, Ferreira J, Grant J, Petersen J, Strand   eds. *Goods and services of marine bivalves*. Switzerland: Springer, Cham, 7–26. DOI: 10.1007/978-3-319-96776-9\_2

- World sea temperatures. Portugal. Available at <https://www.seatemperature.org/> (accessed 27 June 2020)
- Yoann T, Cédric B. 2018. Assessing the sensivity of bivalve populations to global warming using an individual-based modelling approach. *Global Change Biology* 24:4581–4597 DOI: 10.1111/gcb.14402
- Zardi GI, McQuaid CD, Nicastro KR. 2007. Balancing survival and reproduction : seasonality of wave action, attachment strength and reproductive output in indigenous *Perna perna* and invasive *Mytilus galloprovincialis* mussels. *Marine Ecology Progress Series* 334:155–163 DOI: 10.3354/MEPS334155
- Zardi GI, Nicastro KR, McQuaid CD, Erlandsson J. 2008. Sand and wave induced mortality in invasive (*Mytilus galloprovincialis*) and indigenous (*Perna perna*) mussels. *Marine Biology* 153: 853–858 DOI: 10.1007/s00227-007-0857-z
- Zardi GI, Nicastro KR, McQuaid CD, Rius M, Porri F. 2006. Hydrodynamic stress and habitat partitioning between indigenous (*Perna perna*) and invasive (*Mytilus galloprovincialis*) mussels : constraints of an evolutionary strategy. *Marine Biology* 150:79–88 DOI: 10.1007/S00227-006-0328-Y

**Table 1**(on next page)

Significant differences for percentage cover, density and spat of *M. galloprovincialis* at the different studied temporal and spatial scales.

- 1 Table 1. Summary of univariate analyses of variance (ANOVA) for percentage cover, density and spat density of *M. galloprovincialis*.
- 2 Significant differences indicated in bold. n.s.: not significant, \*p<0.05 \*\*p<0.01 \*\*\*p<0.001

Source of variation	df	%Cover		Density		Spat density		F versus
		MS	F	MS	F	MS	F	
Season=Se	1	1262.53	0.66	0.14	0.01	0.62	0.02	Da(Se)
Date(Se)=Da(Se)	4	1902.84	<b>7.14***</b>	10.07	<b>13.56***</b>	26.04	<b>20.39***</b>	Si(SexDaxSh)
Shore=Sh	5	1340.44	<b>2.86*</b>	4.05	2.34	5.57	2.13	ShxDa(Se)
Site(Sh)=Si(SexDaxSh)	36	266.62	<b>2.55***</b>	0.74	<b>3.31***</b>	1.28	<b>3.14***</b>	Residual
SexSh	5	260.39	0.56	1.92	1.11	4.70	1.79	ShxDa(Se)
ShxDa(Se)	20	468.49	1.76	1.73	<b>2.33*</b>	2.62	<b>2.05*</b>	Si(SexDaxSh)
Residual	216	104.59		0.22		0.41		
Total	287							
Transform		none		Ln(X+1)		Ln(X+1)		
Cochran's Test		C=0.0702	n.s.	C=0.0829	n.s.	C=0.0820	n.s.	

3

4

## Table 2 (on next page)

Significant differences for condition index and clump thickness of *M. galloprovincialis* at the different studied temporal and spatial scales.

Figure 2 –(A) Temperature at the studied area during the year 2019. (B) Salinity at the studied area during the year 2018. (C) Wave height at the studied area during the year 2019.

1  
2  
3  
4  
5  
6  
7

Table 2. Summary of univariate analyses of variance (ANOVA) for condition index and clump thickness of *M. galloprovincialis*. Significant differences indicated in bold. s.: significant; n.s.: not significant, \*p<0.05 \*\*p<0.01 \*\*\*p<0.001

Source of variance	df	Condition Index		Clump Thickness		F versus
		MS	F	MS	F	
Season=Se	1	0.0028	0.12	0.041	0.03	Da(Se)
Date(Se)=Da(Se)	4	0.0232	<b>18.40***</b>	1.472	<b>6.98***</b>	Si(SexDaxSh)
Shore=Sh	5	0.0143	<b>2.71*</b>	2.606	<b>5.47**</b>	ShxDa(Se)
Site(SexDaxSh)=Si(SexDaxSh)	36	0.0013	0.92	0.210	<b>3.55***</b>	Pl(SexDaxShxSi)
Plot(SexDaxShxSi)=Pl(SexDaxShxSi)	216	0.0014	<b>3.28***</b>	0.059	<b>1.64***</b>	Residual
SexSh	5	0.0011	0.20	0.222	0.47	ShxDa(Se)
ShxDa(Se)	20	0.0053	<b>4.17***</b>	0.476	<b>2.26*</b>	Si(SexDaxSh)
Residual	259	0.0004		0.036		
Total	287					
	9					
Transformation		None		Ln(X+1)		
Cochran's Test		C=0.0744	s.	C=0.0398	n.s.	

# **Table 3**(on next page)

Significant differences for different size classes of *M. galloprovincialis* at the different studied temporal and spatial scales.

1

2

3 Table 3. Summary of univariate analyses of variance (ANOVA) for different size classes of *M. galloprovincialis*. Significant  
4 differences indicated in bold. s.: significant; n.s.: not significant, \*p<0.05 \*\*p<0.01 \*\*\*p<0.001

Source of variation	df	Class 1		Class 2		Class 3		Class 4		Class 5		Class 6		F versus
		MS	F	MS	F	MS	F	MS	F	MS	F	MS	F	
Season=Se	1	0.68	0.83	0.70	0.19	0.59	0.01	0.08	0.07	0.06	0.95	0.59	0.01	Da(Se)
Date(Se)=Da(Se)	4	0.82	<b>9.79***</b>	3.75	<b>10.16***</b>	104.95	<b>8.25***</b>	1.13	1.29	0.06	0.54	48.98	<b>120.57***</b>	Si(SexDaxSh)
Shore=Sh	5	0.08	0.52	1.16	1.25	15.02	0.68	2.98	1.82	0.70	2.24	1.44	1.40	ShxDa(Se)
Site(Sh)=Si(SexDaxSh)	36	0.08	0.95	0.37	<b>2.49***</b>	12.72	<b>1.65*</b>	0.87	<b>2.33***</b>	0.11	0.85	0.41	<b>2.45***</b>	Residual
SexSh	5	0.18	1.18	0.60	0.64	8.06	0.36	0.80	0.49	0.23	0.73	1.44	1.40	ShxDa(Se)
ShxDa(Se)	20	0.15	1.84	0.93	<b>2.53**</b>	22.25	1.75	1.64	<b>1.88*</b>	0.31	<b>2.82**</b>	1.02	<b>2.52**</b>	Si(SexDaxSh)
Residual	216	0.09		0.15		7.69		0.37		0.13		0.16		
Total	287													
Transformation		none		Ln(X+1)		none		Ln(X+1)		Ln(X+1)		none		
Cochran's Test		C=0.2500	s.	C=0.0622	n.s.	C=0.0584	n.s.	C=0.0636	n.s.	C=0.0761	n.s.	C=0.9161	s.	

5

6

7

# **Table 4**(on next page)

Significant differences for sediment content of *M. galloprovincialis* clumps at the different studied temporal and spatial scales.

1 Table 4. Summary of univariate analyses of variance (ANOVA) for sediment content of *M. galloprovincialis* clumps. Significant  
2 differences indicated in bold. s.: significant; n.s.: not significant, \*p<0.05 \*\*p<0.01 \*\*\*p<0.001

Source of variation	df	63 µm		125 µm		250 µm		500 µm		1000 µm		Total		F versus
		MS	F	MS	F	MS	F	MS	F	MS	F	MS	F	
Season=Se	1	0.07	0.01	2.21	0.77	2.23	0.59	8.87	1.97	0.47	0.25	1.39	0.49	Da(Se)
Date(Se)=Da(Se)	4	5.37	<b>2.86*</b>	2.86	2.50	3.80	1.41	4.50	2.03	1.90	1.31	2.84	1.49	Si(SexDaxSh)
Shore=Sh	5	14.11	<b>5.28**</b>	5.04	<b>2.86*</b>	24.21	<b>11.54***</b>	22.94	<b>6.28**</b>	11.34	<b>5.51**</b>	17.78	<b>7.42***</b>	ShxDa(Se)
Site(Sh)=Si(SexDaxSh)	36	1.88	<b>2.22***</b>	1.14	<b>3.13***</b>	1.99	<b>3.05***</b>	2.22	<b>2.82***</b>	1.45	<b>3.80***</b>	1.90	<b>3.68***</b>	Residual
SexSh	5	2.67	1.00	1.05	0.60	2.21	1.06	1.30	0.36	1.65	0.80	1.64	0.68	ShxDa(Se)
ShxDa(Se)	20	2.67	1.42	1.76	1.54	2.10	1.05	3.66	1.65	2.06	1.41	2.40	1.26	Si(SexDaxSh)
Residual	216	0.84		0.36		0.65		0.79		0.38		0.52		
Total	287													
Transformation		none		Ln(X+1)		Ln(X+1)		Ln(X+1)		Ln(X+1)		Ln(X+1)		
Cochran's Test		C=0.2446	s.	C=0.0789	n.s.	C=0.0564	n.s.	C=0.0691	n.s.	C=0.0521	n.s.	C=0.0590	n.s.	

3

4

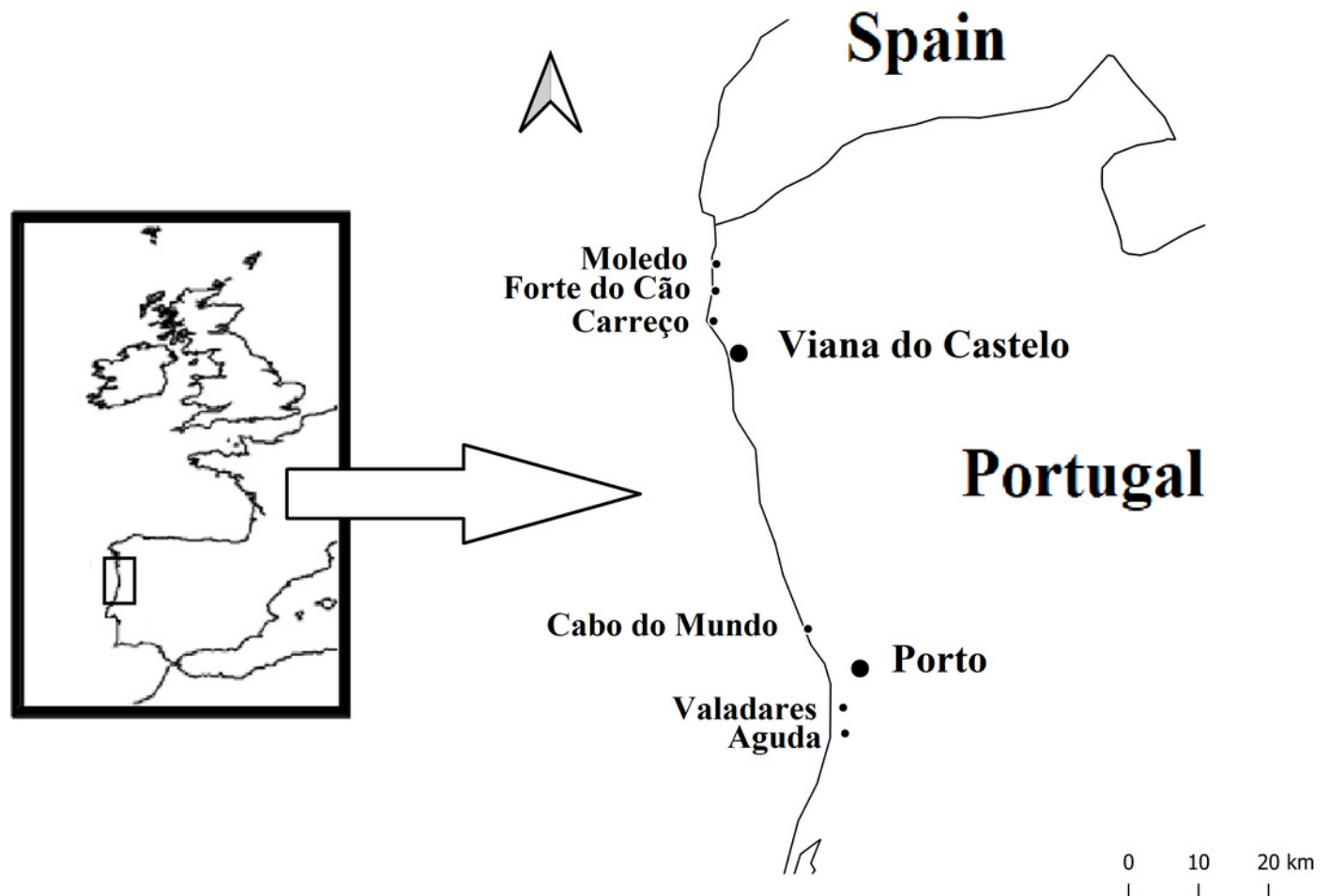
5

6

# Figure 1

Studied Area

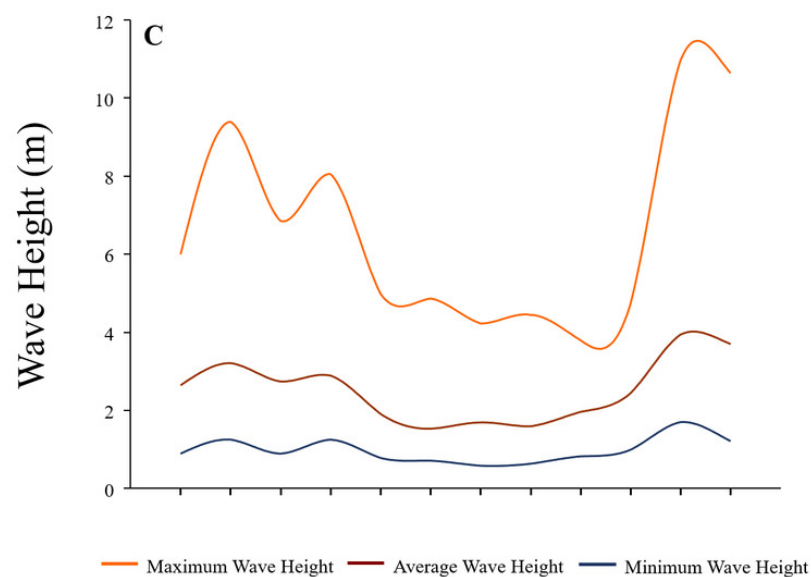
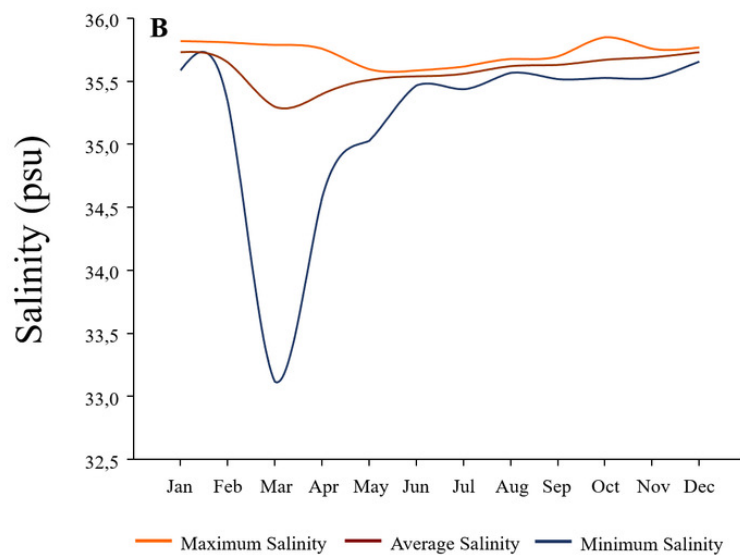
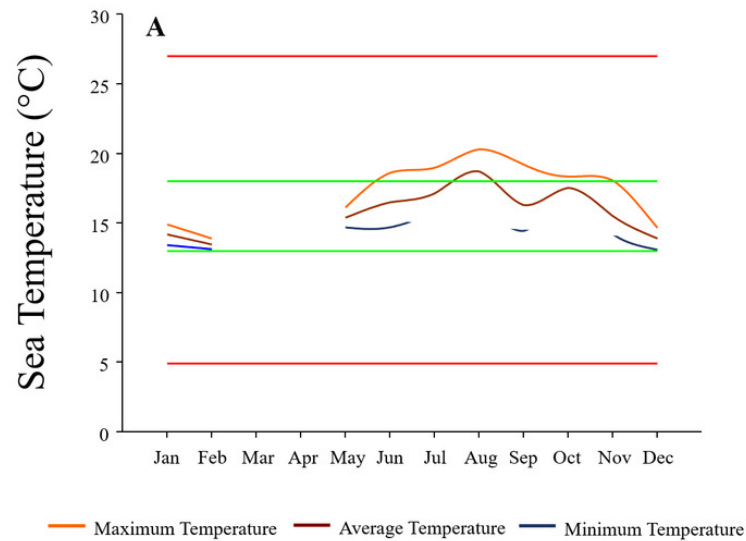
Figure 1 - Location of the 6 studied shores along the Atlantic coast of Northern Portugal



# Figure 2

## Environmental data

Figure 2 –(A) Temperature at the studied area during the year 2019. Red lines show the upper and lower limits of temperature tolerance for *M. galloprovincialis*. Green lines show the upper and lower limits of optimal temperature for *M. galloprovincialis*. (B) Salinity at the studied area during the year 2018. (C) Wave height at the studied area during the year 2019.

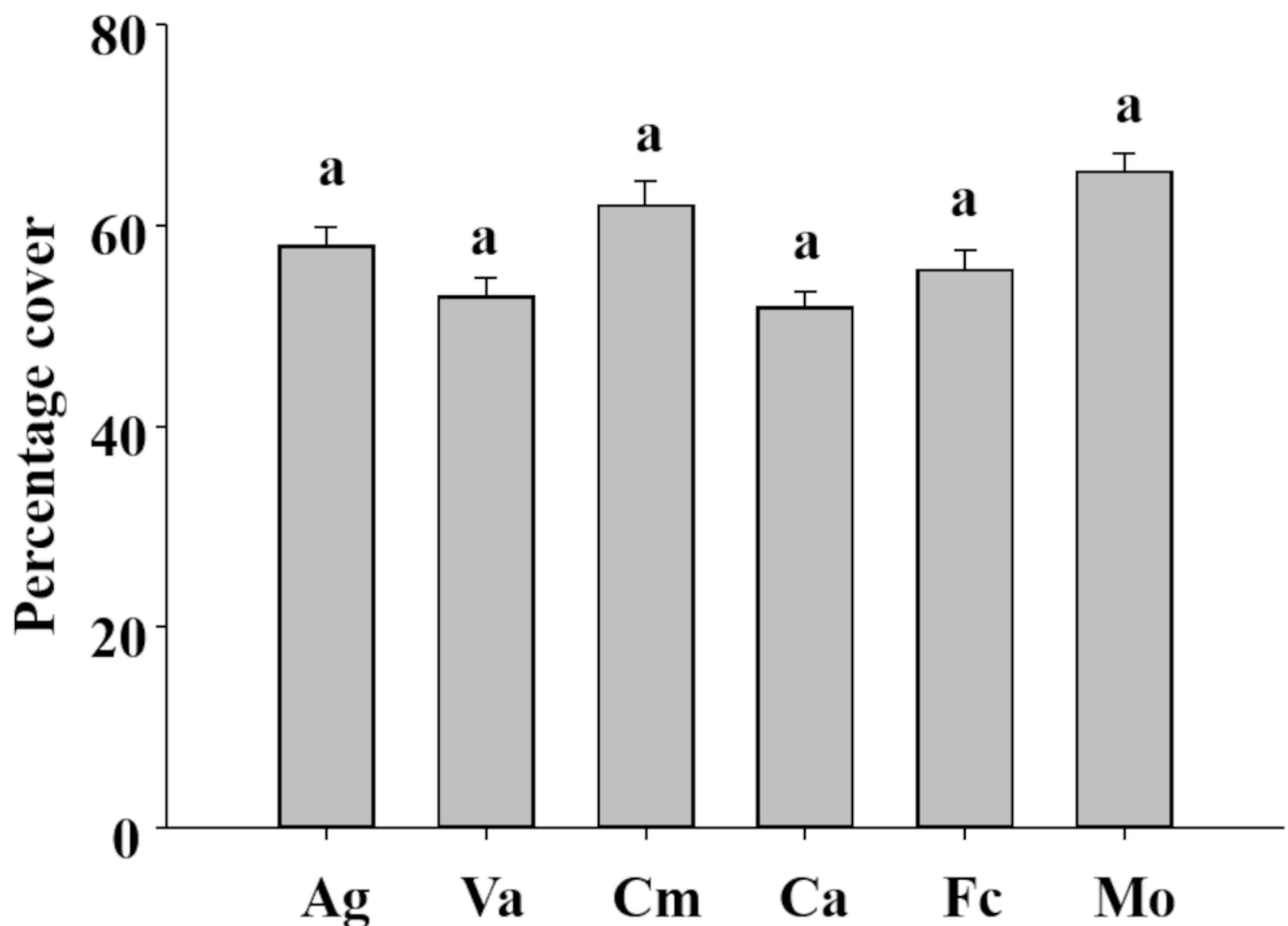


# Figure 3

Percentage cover of *Mytilus galloprovincialis* at different studied shores.

Figure 3 – **Percentage cover of *Mytilus galloprovincialis* at different studied shores.**

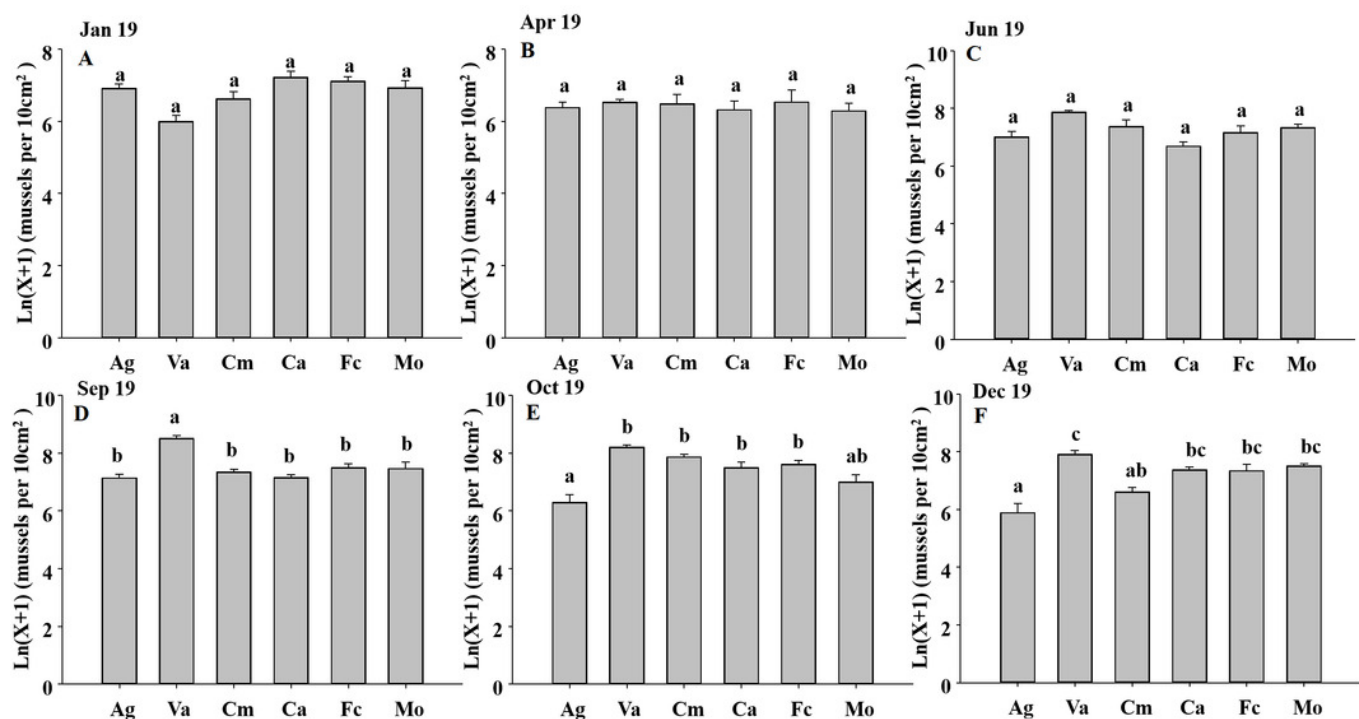
Mean values (+ SE) of percentage cover in 50 x 50 cm. Ag: Aguda, Va: Valadares, Cm: Cabo do Mundo, Ca: Carreço, Fc: Forte do Cão, Mo: Moledo.



# Figure 4

Significant differences of density of *Mytilus galloprovincialis* at different shores and dates.

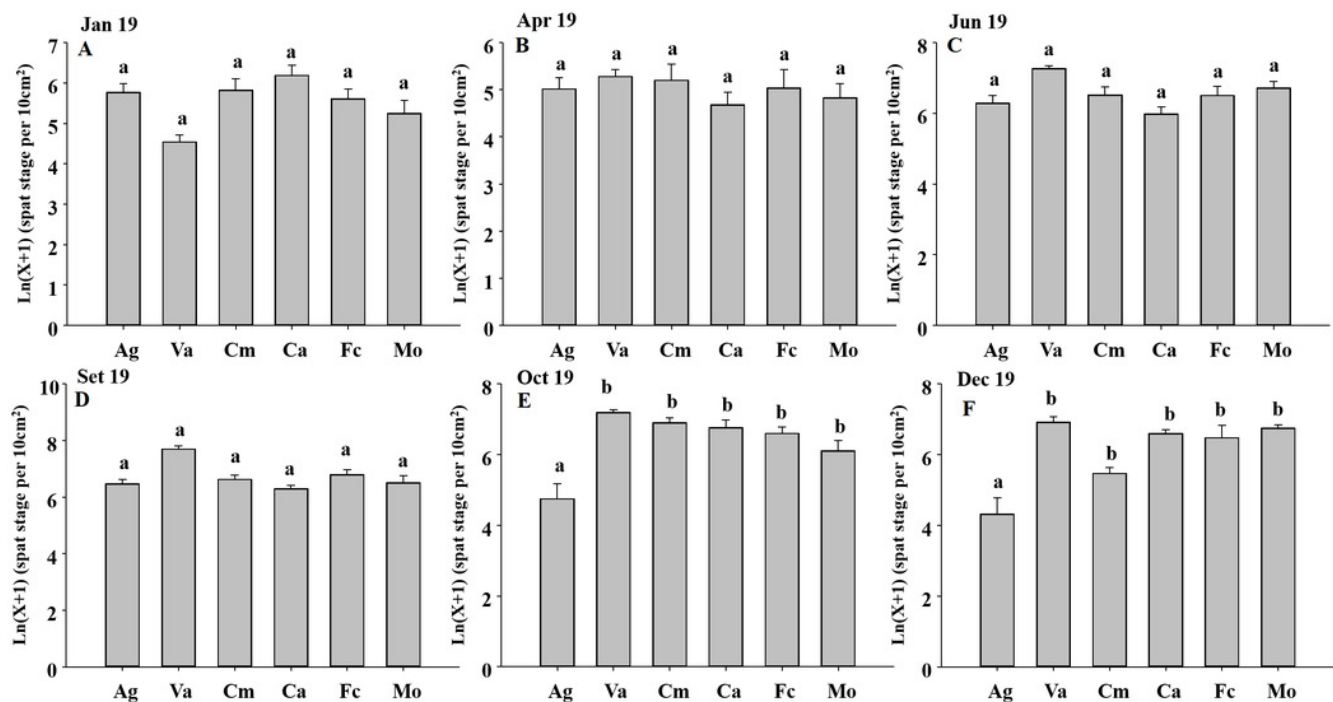
Figure 4 - **Density of *Mytilus galloprovincialis* at different shores and dates.** Mean values (+ SE) of density (number of mussels per 10 cm<sup>2</sup>). Ag: Aguda, Va: Valadares, Cm: Cabo do Mundo, Ca: Carreço, Fc: Forte do Cão, Mo: Moledo. Different letters indicate significant differences between shores (P < 0.01) as detected by SNK test.



# Figure 5

Density of *Mytilus galloprovincialis* in spat stage at different shores and dates.

Figure 5 - **Density of *Mytilus galloprovincialis* in spat stage at different shores and dates.** Mean values (+ SE) of mussels in spat stage (number of mussels with size between 500 and 1000  $\mu\text{m}$  per 10  $\text{cm}^2$ ). Ag: Aguda, Va: Valadares, Cm: Cabo do Mundo, Ca: Carreço, Fc: Forte do Cão, Mo: Moledo. Different letters indicate significant differences between shores ( $P < 0.01$ ) as detected by SNK test.

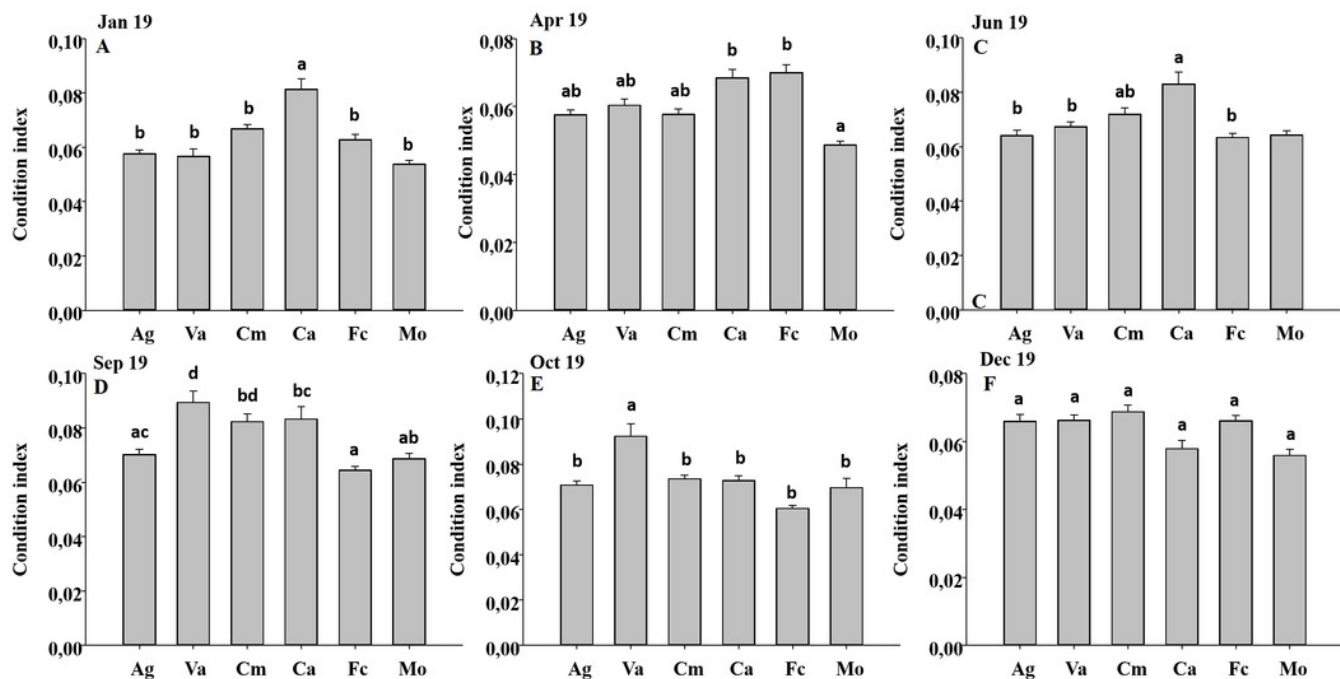


# Figure 6

Condition index of *Mytilus galloprovincialis* at different shores and dates.

Figure 6 - **Condition index of *Mytilus galloprovincialis* at different shores and dates.**

Meanvalues (+ SE) ofconditionindex. Ag: Aguda, Va: Valadares, Cm: Cabo do Mundo, Ca: Carreço, Fc: Forte do Cão, Mo: Moledo. Different letters indicate significant differences between shores (P < 0.01) as detected by SNK test.

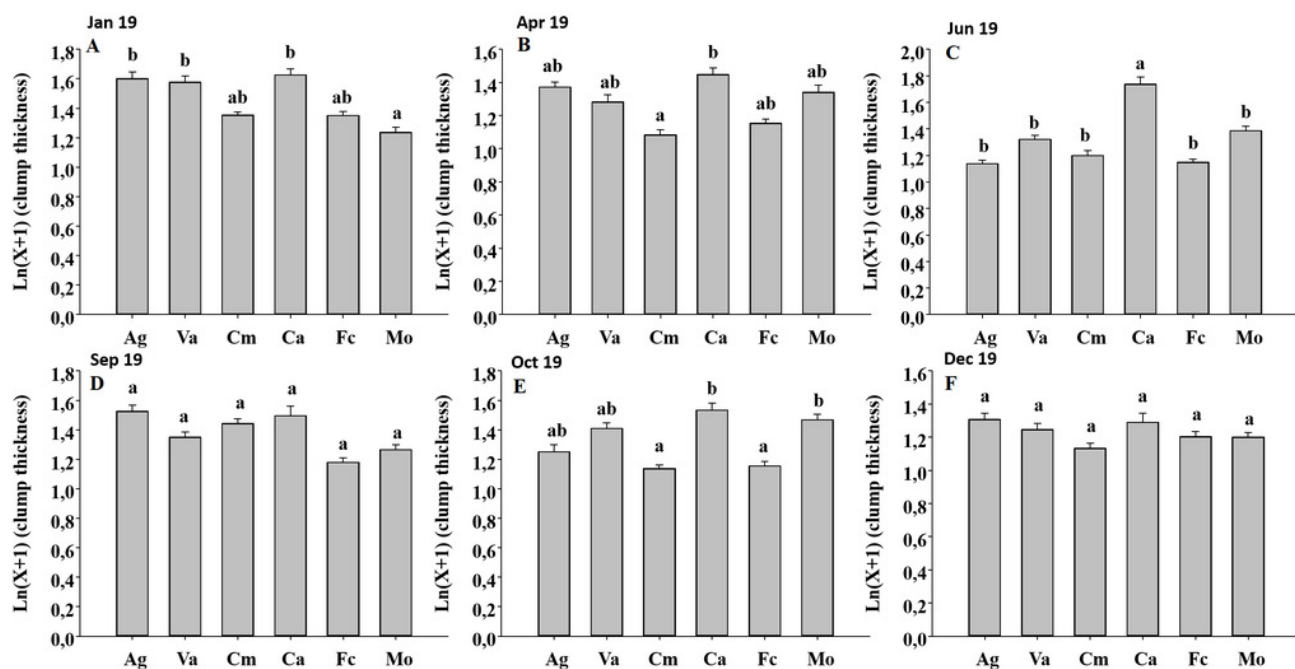


# Figure 7

Clump thickness of *Mytilus galloprovincialis* at different shores and dates.

Figure 7 - **Clump thickness of *Mytilus galloprovincialis* at different shores and dates.**

Mean values (+ SE) of clump thickness in cm. Ag: Aguda, Va: Valadares, Cm: Cabo do Mundo, Ca: Carreço, Fc: Forte do Cão, Mo: Moledo. Different letters indicate significant differences between shores ( $P < 0.01$ ) as detected by SNK test.



# Figure 8

Sediment content of *Mytilus galloprovincialis* clumps at different shores

Figure 8 - **Sediment content of *Mytilus galloprovincialis* clumps at different shores.**

Meanvalues (+ SE) of sediment content in grams. Ag: Aguda, Va: Valadares, Cm: Cabo do Mundo, Ca: Carreço, Fc: Forte do Cão, Mo: Moledo. Different letters indicate significant differences between shores (P < 0.01) as detected by SNK test.

