



DNA-based diversity assessment reveals a new coral barnacle, *Cantellius alveopora* sp. nov. (Balanomorpha: Pyrgomatidae) exclusively associated with the high latitude coral *Alveopora japonica* in the waters of southern Korea

Hyun Kyong Kim^{1,2}, Benny K.K. Chan³, Sung Joon Song¹ and Jong Seong Khim¹

¹ School of Earth and Environmental Sciences & Research Institute of Oceanography, Seoul National University, Seoul, Republic of Korea

² Animal Research Division, Honam National Institute of Biological Resources, Jeollanam-do, Republic of Korea

³ Biodiversity Research Center, Academia Sinica, Taipei, Taiwan

ABSTRACT

In the present study, the Indo-Pacific coral associated barnacle *Cantellius euspinulosum* (Broch, 1931) was found to have cryptic species in Korea, Taiwan and other regions based on molecular studies. However, the original specimens of *C. euspinulosum* from Broch have not been previously described or illustrated, making it difficult to assign which cryptic species to the original *C. euspinulosum*. The original specimen of *C. euspinulosum* was examined and illustrated here, and the species identity of *C. cf. euspinulosum* collected from Jeju Island in the present study and other cryptic species (based on literature illustrations) in the Indo-Pacific were evaluated. *C. euspinulosum* from Singapore, Java, Mergui Archipelago in Andaman Sea and Nha Trang represented the *C. euspinulosum* identified by Broch (1931). It is a generalist on *Acropora*, *Favia*, *Favites*, *Leptoria*, *Montipora*, *Pachyseris* and *Pocillipora* corals and distributed in the Indo-Pacific region. Morphological examination and DNA sequencing (COI, 12S DNA sequences) in the present study showed that *C. cf. euspinulosum* from Jeju Island, Korea represents a distinct species, herein named *C. alveopora* sp. nov. *Cantellius alveopora* sp. nov. is a specialist species that only grows on *Alveopora* and also present in Palau, and Ogasawara Island in Japan. *Cantellius cf. euspinulosum* in Taiwan, the Moscos Island, and Australia belong to several other distinct species awaiting further morphological and molecular studies. At least five cryptic species of *C. euspinulosum* were identified in the present study, including both specialist and generalists.

Subjects Biodiversity, Marine Biology, Molecular Biology, Taxonomy, Zoology

Keywords DNA barcoding, New coral barnacle, Cryptic species, Indo-Pacific region, Biodiversity management

INTRODUCTION

The Indo-Pacific supports the highest marine diversity globally (Roberts et al., 2002). Coral reef habitats show the highest diversity in the marine environment, with most fauna

Submitted 26 January 2021

Accepted 24 March 2021

Published 29 April 2021

Corresponding authors

Benny K.K. Chan,

chankk@gate.sinica.edu.tw

Jong Seong Khim, jskocean@snu.ac.kr

Academic editor

Robert Toonen

Additional Information and
Declarations can be found on
page 16

DOI 10.7717/peerj.11284

© Copyright
2021 Kim et al.

Distributed under
Creative Commons CC-BY 4.0

OPEN ACCESS

exhibiting symbiosis with corals (Roberts *et al.*, 2002; Stella *et al.*, 2011; Dreyer & Chan, 2020). Several studies on coral symbiotic fauna have been conducted, including trapezoids and gall crabs, polychaetes, bivalves, and barnacles (Goldberg, 2013). Coral hosts play significant ecological roles to coral-associated invertebrates by providing habitat, food, refuge, and mating sites (Stella *et al.*, 2011).

Barnacles (Cirripedia) are ubiquitous across marine environments (Chan & Høeg, 2015). Several groups of barnacles are associated with fire and scleractinian corals (Anderson, 1992; Tsang *et al.*, 2009; Malay & Michonneau, 2014). These barnacle groups have different lifestyles (burrowing or epibiotic on corals), with molecular phylogeny delineating them as paraphyletic (Malay & Michonneau, 2014; Simon-Blecher, Huchon & Achituv, 2007; Tsang *et al.*, 2014). The family Pyrgomatidae exclusively grows inside scleractinian corals (Hiro, 1935). The body cavity of pyrgomatid barnacles is embedded inside the coral skeleton, with a cylindrical base, and the shell is flattened (Hiro, 1935; Chan, Wong & Cheng, 2020). Coral-associated barnacles include generalists, which live in a wide range of corals, and specialists, which only live in specific coral host species (Ogawa & Matsuzkai, 1992; Chan, Wong & Cheng, 2020). Such host-specificity is correlated to their phylogenetic level (Tsang *et al.*, 2014).

Previous biodiversity assessments of coral barnacles and their host-specificity were largely based on morphological approaches. These approaches resulted in many species (for example, *Cantellius pallidus*) being considered as generalists, showing very wide geographical distributions. Traditional morphological approaches faced challenges due to the great morphological variation exhibited by barnacles among hosts; consequently, conclusions cannot be made due to this high phenotypic plasticity (Ross & Newman, 1973; Anderson, 1992). With the development of molecular approaches in taxonomic and phylogenetic studies of crustaceans, the diversity of barnacles growing on corals has included some cryptic species. Furthermore, host ranges were found to be narrower when compared to the results deduced from morphological approaches (Kolbasov, Chan & Petrunina, 2015; Kolbasov *et al.*, 2016). Thus, molecular approaches open up new insights on the host-usage and geographical distribution of coral barnacles.

A review by Chan, Wong & Cheng (2020) showed that the diversity of coral barnacles in the west Pacific region is positively associated with coral host diversity. The waters around Okinawa Island support the greatest coral diversity in the Pacific (350 species identified to date), including 20 species of coral barnacles. In contrast, only 20 coral species were recorded in the higher latitude coral community in the Japan Sea region, including four coral barnacle species (Asami & Yamaguchi, 1997; Chan, Wong & Cheng, 2020). Coral communities occurring at high latitudes are termed as marginal communities, as they are at the marginal distribution of coral triangles. Marginal coral communities are characterized by low diversity, slow growth rates, and high susceptibility to global climatic changes (Chan *et al.*, 2018).

Jejudo Island in the waters of Korea is at the northern-most limit of the coral distribution in the West Pacific. In the region, only nine Scleractinian coral species have been recorded to date. These corals include the high latitude coral *Alveopora japonica*, which is a common foundation species, with its spatial distribution (and hence abundance) recently expanding

due to global climate change. [Chan et al. \(2018\)](#) studied the molecular diversity of coral barnacles in the waters around the Jeju Island, and recorded three coral barnacle species growing on four Scleractinian coral hosts. The barnacle *Cantellius arcuatus* was only found on the coral *Montipora millipora*. However, the DNA sequences of *C. arcuatus* are similar to those of samples collected in Japan, Taiwan, Malaysia, and Papua New Guinea growing on a variety of hosts. Thus, *C. arcuatus* is likely a generalist species, with a wide distribution range. It only inhabits a single species of coral in the marginal community, probably due to the lower availability of other coral host species. Another barnacle, *Pyrgomina oulastrae* ([Utinomi, 1962](#)), was found on *Psammocora* and *Oulastraea* corals in the waters of Korea and Japan, suggesting it is a generalist. A third species *Cantellius* cf. *euspinulosum* was only found on *Alveopora japonica*. The DNA sequences of this barnacle species did not match any available GenBank sequences, questioning it could be a new species. However, the morphology of this species is similar to that of *Cantellius euspinulosum*.

Cantellius euspinulosum is an Indo-Pacific coral barnacle that invades many coral hosts ([Ross & Newman, 1973](#)). However, the species identity of *C. euspinulosum* remains unclear because illustrations from different reports of this species show large variations in morphological description. *Cantellius euspinulosa* was originally named *Creusia spinulosa* forma *euspinulosa* by [Broch \(1931\)](#). Broch stated that this forma *euspinulosa* represented Darwin's *C. spinulosa* variety 1 ([Darwin, 1854](#)). Unfortunately, however, [Broch \(1931\)](#) did not provide any illustrations of collected forma *euspinulosa* specimens. [Ross & Newman \(1973\)](#) established the genus *Cantellius*, and considered *C. spinulosa* forma *euspinulosa* as *C. euspinulosum*. At present, all identifications of *C. euspinulosum* have been based on the drawings of opercular plates in [Darwin \(1854\)](#). Without any clear examination of the *C. euspinulosum* from Broch's specimens, it would be difficult to ascertain whether they represent cryptic species.

The present study re-examined and illustrated the type specimen of *C. euspinulosum* from the Zoological Museum at the University of Copenhagen, and evaluated species identity and host-usage of *C. cf. euspinulosum* in the waters of Korea. Sequence divergence among all '*C. euspinulosum*' from GenBank sequences were also evaluated to provide a more accurate DNA-based diversity assessment on the geographical and cryptic diversity of *C. euspinulosum* in the Indo-Pacific region. As part of the study, a mini-review on global distribution of *Cantellius* species is presented and discussed with regard to management and conservation of the species diversity.

MATERIALS & METHODS

Field study permission

Field collections in the present study were approved under permits (No. 2436, 2016) from the National Institute of Biological Resources, Jeju Special Self-Governing Province.

Data collection

In total, nine sites were selected in the southern waters of the Jeju Island to sample coral-associated barnacles during August 2016 ([Fig. 1](#)). Specimens of *C. cf. euspinulosum* were collected through SCUBA diving at depths of 5–20 m on *Alveopora japonica* corals

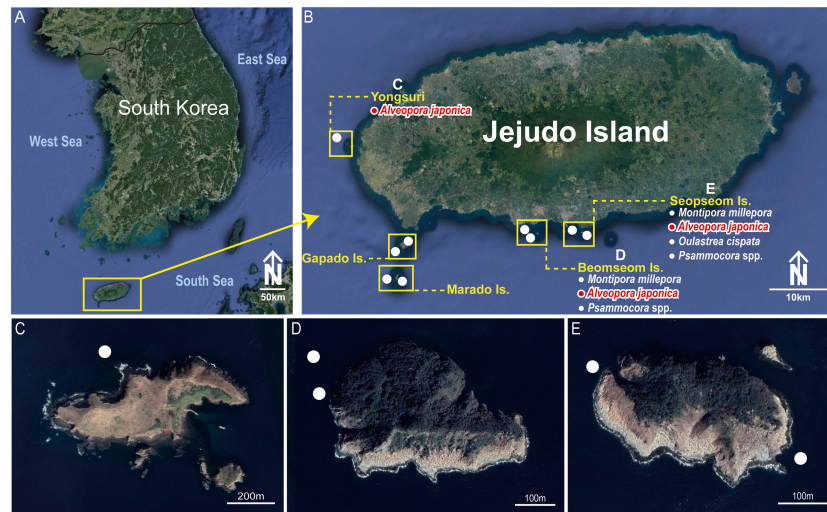


Figure 1 Collection sites of *Cantellius alveopora* sp. nov. Korean Peninsula. (A) Collection sites showing the location of the Jeju Island; (B) Jeju Island, showing the locations of collections sites; (C) Yongsuri; (D) Beomseom Is. and (E) Seopseom Is. Coral species were listed under each island name in (B) to show the coral distribution.

Full-size [DOI: 10.7717/peerj.11284/fig-1](https://doi.org/10.7717/peerj.11284/fig-1)

(Figs. 2A–2C). Before sampling coral-associated barnacles, the entire section of coral containing barnacles was photographed in situ to identify the host corals. Small pieces of coral with embedded barnacles (approximately 5 × 5 cm) were collected using a hammer and chisel. All barnacles and host corals were preserved in 95% ethyl alcohol.

Cantellius cf. *euspinulosum* was isolated from *A. japonica* using forceps. The morphological characteristics of shell parts (shells, scutum and tergum) and somatic bodies (six pairs of cirri, penis, and oral cone) were examined. The shells and opercular valves (scutum and tergum) were immersed in 1.5% bleach for approximately 5 h to digest the organic tissue completely. The shells were then rinsed with slow-running purified water for 30 min and were air-dried. The shells, scutum, and tergum were gold coated and observed under Scanning Electron Microscopes (SEM; FEI Quanta 2000, Thermo-Scientific, Waltham, MA, USA). The cirri, penis, and oral cone were dissected from the somatic bodies and examined using a light microscope (Zeiss Scope A1, Zeiss, Germany) with high definition lenses (Zeiss Plan APO Chromat 40X/0.95 and ZEISS Plan APO Chromat 100x/1.4 oil). This approach allowed setal types on the cirri and mouth parts to be clearly observed. Descriptions of setals follow those of [Chan, Garm & Høeg \(2008\)](#). Specimens were deposited in Marine Arthropods Depository Bank of Korea (MADBK) of Seoul National University (SNU) and Biodiversity Research Museum, Academia Sinica, Taiwan (ASIZCR).

Investigation of type specimens

According to [Broch \(1931\)](#), the type specimens of *C. epinulosum* (named as *Creusia spinulosa* forma *euspinulosa*) were preserved in five bottles. The original description on the locations of the specimens from [Broch \(1931\)](#) were detailed. First, Amboina, 3 m, coral bottom,

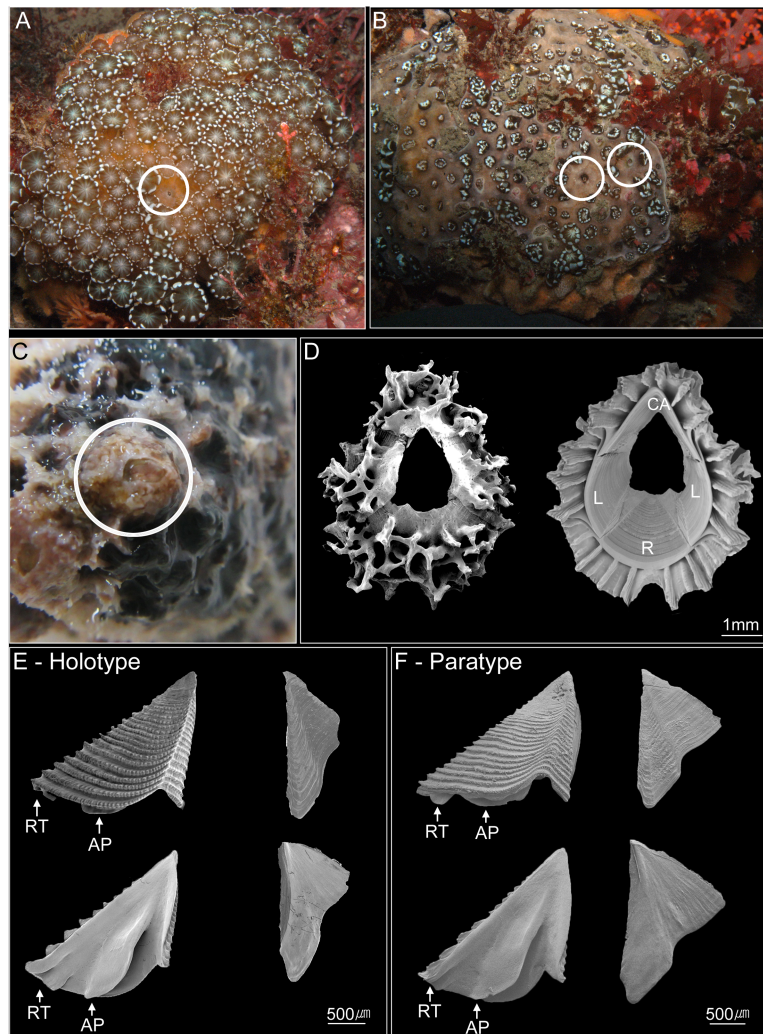


Figure 2 Photographs of *Cantellius alveopora* sp. nov. (A–C) In-situ underwater photographs of *Cantellius alveopora* sp. nov. barnacles on the host coral *Alveopora japonica* (Jeju Island, Korea), indicated by white circles; (D) SEM investigations on the external and internal view of the *Cantellius alveopora* shell; (E) external and internal view of the scutum and tergum of *Cantellius alveopora* (MADBK 420501_001, Holotype); (F) external and internal view of the scutum and tergum of *Cantellius alveopora* (ASIZCR-000455, Paratype). RT, Rostral Tooth; AP, Adductor Plate.

Full-size DOI: [10.7717/peerj.11284/fig-2](https://doi.org/10.7717/peerj.11284/fig-2)

February 10, 1922; several specimens, mostly dead, on the lower side of the Madreporian *Herpetolitha* sp. Second, Amboina Bay, about 140 m, stones, February 22, 1922; several small specimens on dead, corroded Madreporarian corals. Third, St. 24.5°37'S, 132°56'E, 100 m, hard bottom, April 15, 1922; several specimens in Madreporarian corals. Fourth, Singapore at low water (Consul Sc. Gad), June 14 1904; one specimen imbedded in the swollen distal end of a branched Madreporarian coral. Fifth, off Jolo, 50 m, coral and Lithothamnia (Dr. Th. Mortensen), March 19, 1914; several specimens in different Madreporarian corals (Figs. 3 and 4). All five specimens described by *Broch (1931)* were

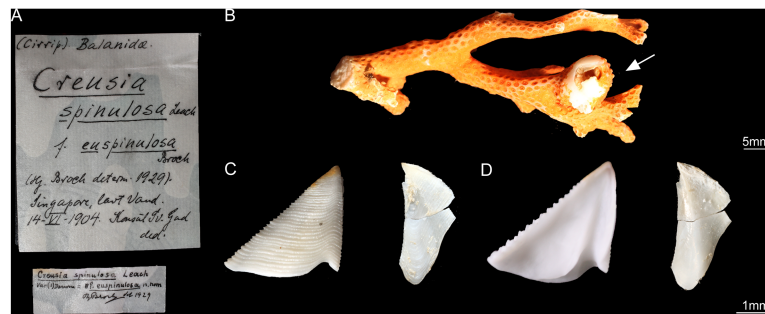


Figure 3 *Cantellius euspinulosum* specimen from Broch's collection, Zoological Museum, University of Copenhagen, Denmark. (A) Specimen label of the specimens described by Broch and with Broch's signature; (B) a piece of host coral, Madreporian coral, with one *Cantellius euspinulosum* barnacle specimen attached to it; (C) external view of the scutum and tergum of *Cantellius euspinulosum*; (D) internal view of the scutum and tergum of *Cantellius euspinulosum*.

Full-size DOI: 10.7717/peerj.11284/fig-3

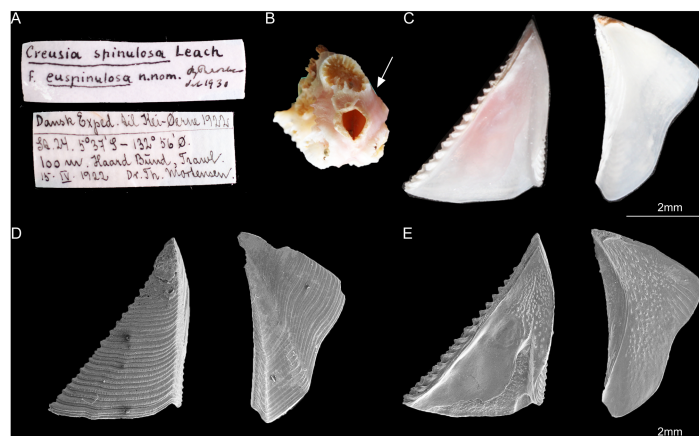


Figure 4 *Cantellius euspinulosum* the second specimen from Broch's collection, Zoological Museum, University of Copenhagen, Denmark. (A) Specimen label of the specimens described by Broch and with Broch's signature; (B) a piece of host coral, Madreporian coral with one *C. antellius euspinulosum* barnacle specimen attached to it; (C) internal view of the scutum and tergum of *Cantellius euspinulosum*; (D) scanning electron micrograph showing the external view of the scutum and tergum of *Cantellius euspinulosum*; (E) scanning electron micrograph showing the internal view of the scutum and tergum of *Cantellius euspinulosum*.

Full-size DOI: 10.7717/peerj.11284/fig-4

successfully located in the Zoological Museum, University of Copenhagen, Denmark. All specimens were dissected to examine the scutum and tergum.

Phylogenetic analyses

COI and 12S sequences of the *Cantellius* cf. *euspinulosum* from Jeju Island, Korea was already uploaded in GenBank from our earlier works and used to represent the new species from the present study (Chan et al., 2018).

There are many mitochondrial gene sequences from coral-associated barnacles available in GenBank. These mitochondrial markers, presented as *C. cf. euspinulosum*, make it

possible to compare species diversity data from the waters around the Jeju Island with other available mitochondrial sequences of *C. euspinulosum* globally. We downloaded all *Cantellius* sequences obtained from the search query “*Cantellius*” in GenBank (Table S1).

DNA sequences were proofread using MEGA version 7.0 (Kumar, Stecher & Tamura, 2016), and were aligned with the *Cantellius* sequences from GenBank through multiple alignment using MAFFT version 6.717 (Katoh et al., 2002). Alignments were also checked thoroughly, and ambiguous positions were adjusted manually. Gaps were inserted in some sequences due to missing data. A matrix of genetic distances within and among species was generated using Kimura’s two-parameter model in MEGA version 7.0. The stability of clades was evaluated using bootstrap tests with 1,000 replications. A maximum likelihood (ML) test was conducted for concatenated datasets (mitochondrial COI + 12S). ML analysis was performed using RAxML-HPC2 on XSEDE (Stamatakis, 2014) through the online server Cyberinfrastructure for Phylogenetic Research (CIPRES) with the GTRGAMMA model of nucleotide substitution and 1,000 bootstrap replicates. In the multigene analysis, alignments of two genes were concatenated, and were then partitioned to gene regions. For the analysis, seven pyrgomatid species were used as the outgroup, and were obtained from GenBank (Table S1).

Zoobank registration

The electronic version of this article in Portable Document Format (PDF) will represent a published work according to the International Commission on Zoological Nomenclature (ICZN), and hence the new names contained in the electronic version are effectively published under that Code from the electronic edition alone. This published work and the nomenclatural acts it contains have been registered in ZooBank, the online registration system for the ICZN. The ZooBank LSIDs (Life Science Identifiers) can be resolved and the associated information viewed through any standard web browser by appending the LSID to the prefix <http://zoobank.org/>. The LSID for this publication is: urn:lsid:zoobank.org:pub:4FCF5CC1-BC6B-4F22-A905-B9E1748E646C. The online version of this work is archived and available from the following digital repositories: PeerJ, PubMed Central and CLOCKSS.

RESULTS

Specimens of *Cantellius euspinulosum* from Broch (1931)

The five bottles of specimens named “*Creusia spinulosa* forma *euspinulosa*” from Broch (1931) contained multiple coral-associated barnacle species on examination of the shell and opercular plates. The specimens from “Amboina, 3 m”, coral bottom. February 10th, 1922. Several specimens, mostly dead, on the lower side of the Madreporian *Herpetolitha* sp.” (first description in section 2.2) were identified as *Pyrgomina* sp. This species has a fused external shell, with balanoid type opercular plates. The specimens from “Off Jolo, 50 m” (fifth description in section 2.2), coral and *Lithothamnium*, (Dr. Th. Mortensen). March 19th, 1914. Several specimens in different Madreporarian corals.” were identified as *Armatobalanus* sp. This species has six shell plates and balanoid type opercular plates. The bottle labelled with “Amboina Bay, about 140 m” (second description in section 2.2),

stones, February 22nd, 1922. “Several small specimens on dead, corroded Madreporarian corals.” did not contain any barnacle specimens for examination.

Only two bottles of specimens were identified as *C. euspinulosum*. These included specimens from “St. 24.5°37'S, 132°56'E, 100 m, hard bottom. April 15th, 1922. Several specimens in Madreporarian corals” and “Singapore, at low water (Consul Sc. Gad). June 14th, 1904. One specimen imbedded in the swollen distal end of a branched Madreporarian coral.” (Figs. 3 and 4). The scutum of both specimens was almost an equilateral triangular shape; external surfaces with horizontal striations; occludent margin straight with fine teeth, tergal margin slightly convex; basal margin convex, without any adductor plate and rostral tooth. A notch was present at 1/3 of margin close to the tergal margin, with a deep adductor muscle scar. The tergum had a slightly concaved scutal margin and wide and blunt spur. Basal margin was slightly concaved (Figs. 3 and 4).

Molecular analysis

For the molecular analysis based on two genes (COI and 12S) sequences, 21 *Cantellius* species including seven undetermined species (*Cantellius* sp.1-7) were downloaded from GenBank. The adjusted alignments consisted of 639 bases for COI and 439 bases for 12S. To identify each species accurately, we used concatenated tree (COI + 12S) datasets. Around 15% of partial sequences of the COI and 1.8% of 12S sequences were treated with gaps due to missing data. These datasets were confirmed as 16 distinct taxa identified through clustering with previously reported species (Fig. 5). Among them, two taxa were still undetermined and considered to be new species (*Cantellius* sp.1 from Taiwan and Philippines and *Cantellius* sp.7 from Philippines). In the *C. arcuatus* clade, 76 specimens were retrieved from GenBank, which originated from Japan, Malaysia, Philippines, Papua New Guinea, and Korea. Of these, one ambiguously labelled as “*Cantellius* sp.2” from the Philippines was confirmed as *C. arcuatus*. Three GenBank submissions that were initially annotated in GenBank as *C. sextus* from Taiwan formed a unique clade. One specimen (UF8664) from the Philippines was grouped with *C. septimus* (sept1-3), as it had high sequence similarities, and we defined it as *C. septimus*. The new *Cantellius* species in the present study, *Cantellius alveopora* sp. nov., based on nine GenBank sequence submissions originally labeled as *C. cf. euspinulosum* from Korea, were consistently clustered as distinct sister clades to the other two *Cantellius* species (*C. brevitergum* and *C. septimus*), with high nodal support that was clearly demarcated. Therefore, we named them as “*C. alveopora* sp. nov.” (see taxonomic description in section 3.3) in this study. *Cantellius* sp.5 (UF6541) and *Cantellius* sp.6 (UF8676) from the Philippines formed a sister clade with *C. transversalis* (CEL_SU46_1) and *C. acutum* (CEL_GI164_1, Taiwan and actu1), respectively. Therefore, we defined them as *C. transversalis* and *C. acutum*. *Cantellius* sp.2 (UF8663, Philippines), forming a monophyletic group with *C. arcuatum* (CEL_KT26_3 and CEL_KT101_3, Taiwan and arc1) and *Cantellius* sp.3 (UF8638, Philippines), grouped with *C. euspinulosum* (CEL_KT14_1, CEL_KT16_1 and CEL_KT27_3, Taiwan). These two groups were designated as *C. arcuatum* and *C. euspinulosum*. The remaining five groups were monophyletic: *C. pallidus*, *C. secundus*, and *C. hoegi* originating from Taiwan, *C. cf. sumbawae* and *C. iwayama* (Fig. 5).

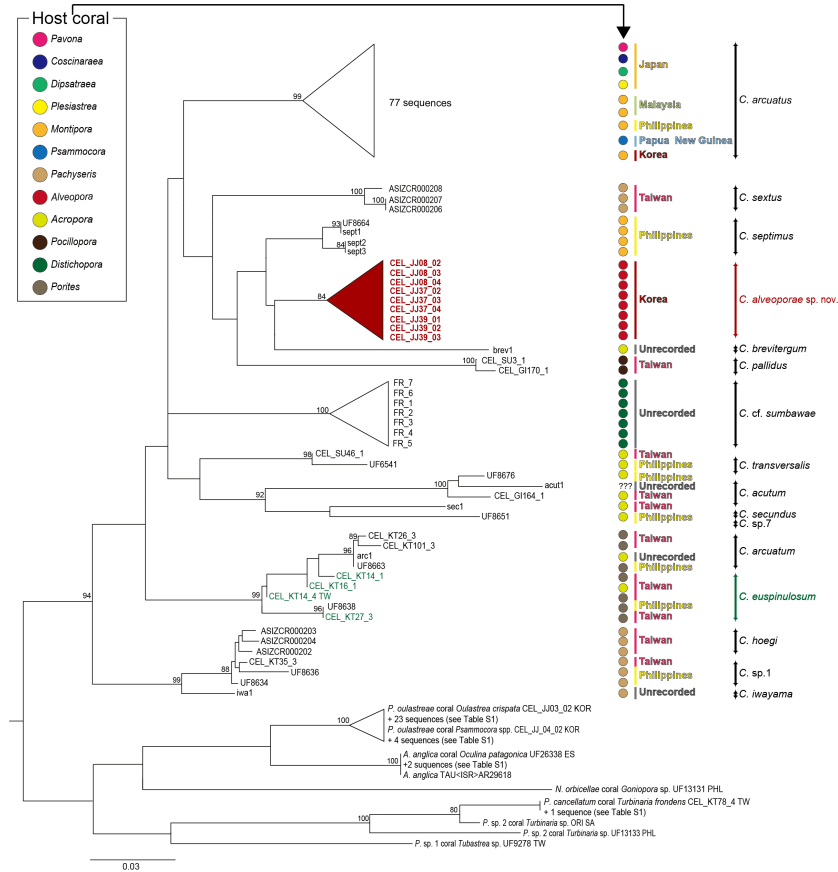


Figure 5 Phylogenetic tree (COI + 12S) for coral-associated barnacles based on maximum likelihood (ML) analysis of the two mitochondrial gene datasets. ML trees were constructed with RaxML 8.0.2 using the GTRGAMMA model of evolution and 1,000 bootstrap replicates. Bootstrap scores of >80% are shown at the nodes. *Cantellius euspinulosum* species reported in Taiwan are presented in green, and new species from this study are presented in pink. The scale bar represents the number of expected nucleotide substitutions per site.

Full-size DOI: 10.7717/peerj.11284/fig-5

Multigene sequence alignment revealed that the K2P distance among sequences ranged from 3.28% to 10.24% in *Cantellius* spp. (Table S2). Of these, the new species in the present study, *Cantellius alveopora* sp. nov. (CEL_JJ08_02-04, CEL_JJ37_02-04, CEL_JJ39_01-03) embedded in *A. japonica*, formed a sister clade with *C. brevitergum* with high sequence divergences (Fig. 5). Their distant relationship was supported by the K2P distance, which was 5.27% (Table S2).

Cantellius alveopora sp. nov. had similar morphology to *C. euspinulosum*. However, phylogenetic analysis showed that it was not likely conspecific. Four sequences from GenBank, labelled as *C. euspinulosum* originating from Taiwan formed a sister clade with *C. arcuatum*. The pairwise distance was 6.08% (Fig. 5, Table S2).

Description

Cantellius alveopora sp. nov.

Cantellius cf. *euspinulosum* Chan et al., 2018: 5,

Figs. 3–5.

Zoobank registry. urn:lsid:zoobank.org:act:F2A21CA9-CCBE-4C60-8B4A-98E3545792E5

Materials examined. Holotype. Beom Seom, Is., Jejudo Island, Korea, on host coral *Alveopora japonica*, coll. B.K.K. Chan, 10 August 2016 (MADBK 420501_001). **Paratypes.** numerous specimens, Yongsuri, Hangyeong-myeon, Jeju-si, Jejudo Island, Korea, on host coral *Alveopora japonica*, coll. K. S. Choi, 9 August 2016 (ASIZCR-000455); 5 specimens, Beom Seom, Is., Jejudo Island, Korea, on host coral *Alveopora japonica*, coll. B.K.K. Chan, 10 August 2016 (MADBK 420501_002).

Size (Holotype). Basal diameter six mm.

Diagnosis. Base of shell with 29 longitudinal septa, shell conical with 4 plates. Scutum triangular, with rostral tooth and shallow adductor plate at basal margin, width almost equal to height, occludent margin straight with strong teeth; tergum flat, thin, spur blunt. Mandible with 5 teeth, fifth tooth fused with inferior angle; maxillule without notch; Labrum bilobed, 3 teeth on each crest. Serrulate setae present on cirrus I to III; cirrus IV to VI long, slender. Penis annulated, longer than cirrus VI.

Description. Shell conical and ovate, 4-plated (rostrum, carina, and paired laterals). External surface covered by coral tissue. Base of shell with approximately 29 longitudinal septa radiating from rim of sheath to external shell surface (8 in rostrum and carina, 6 and 7 in laterals), septa margin serrated. Orifice circular, about $2/5$ length of rostro-carinal diameter (Fig. 2D).

Scutum and tergum separated, basically white, with purple color in apex region. Scutum triangular, width approximately equal to height, occludent margin straight, rostral tooth and adductor plate present. External surface with horizontal striations, striations with row of small pores. Internal view with a deep depressor muscle crest, without an oval-shaped adductor muscle scar. Tergum triangular. Spur blunt, width of basal margin of tergum equal to height of tergum. External surface with a shallow medial furrow, extending from basal margin towards apex, width of furrow increasing gradually from apex to base. External surface with horizontal striations (Fig. 2E).

Cirrus I with unequal rami, anterior ramus long, slender, with 12-segments, posterior ramus 9-segmented, bearing serrulate setae (Fig. 6A). Cirrus II anterior ramus with 9-segments, slightly longer than posterior ramus (7-segmented), bearing serrulate setae (Fig. 6B). Cirrus III anterior ramus longer than posterior ramus, 12- and 9-segmented, respectively, bearing serrulate setae, lacking small sharp teeth on base of each segment (Fig. 6C). Cirri IV–VI long, slender, rami similar in length, bearing serrulate setae. Cirrus IV with anterior ramus 30-segmented, posterior ramus 31-segmented, Cirrus V (anterior 30-segmented, posterior 31-segmented), Cirrus VI (anterior 32-segmented, posterior 31-segmented). Each intermediate segment of ramus of Cirrus IV–VI with 2-3 pairs of short simple setae (Figs. 6D–6F). Penis annulated, with scattered short simple-type setae. Pedicle with blunt basidorsal point (Figs. 6G–6I).

Maxilla ovate, with serrulate setae on margin (Fig. 7A). Mandibular palp elongated, bearing serrulate setae distally and on interior margin (Fig. 7B). Mandible with 5 teeth, excluding inferior angle. First 3 teeth occupy $4/5$ length of cutting edge (Fig. 7C). Lateral

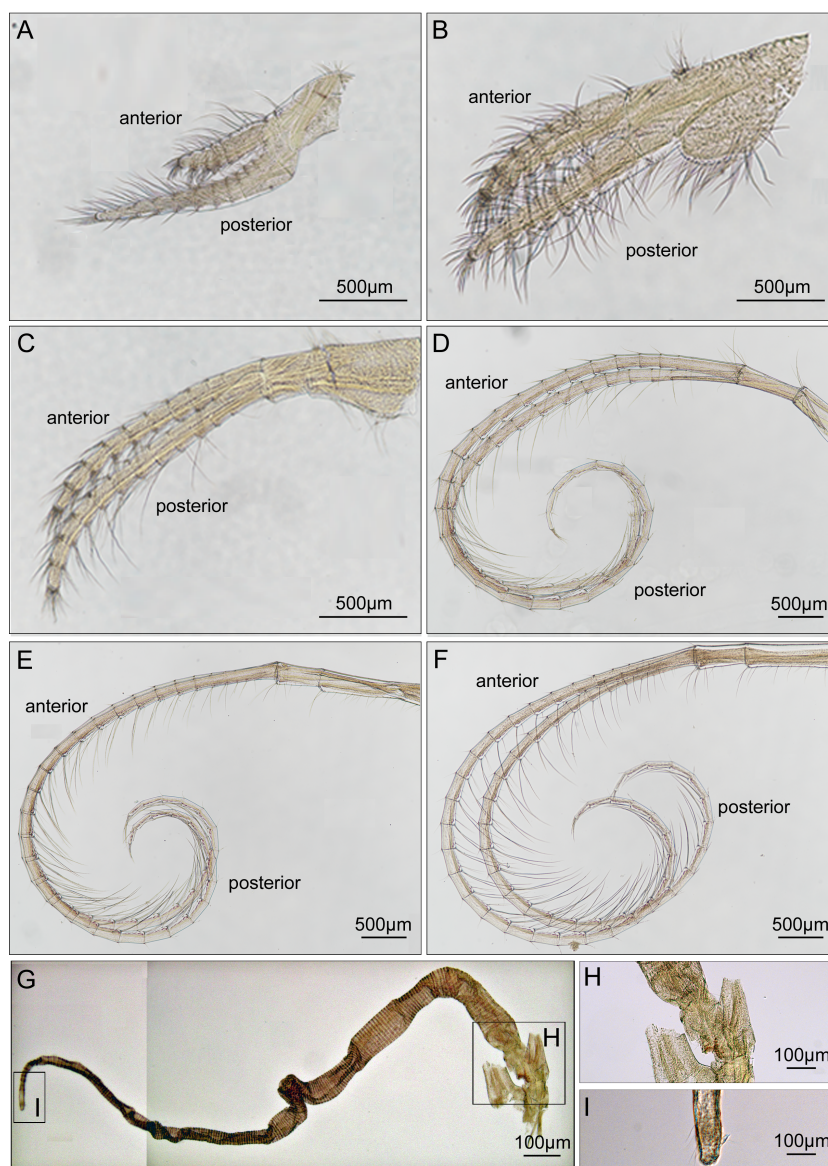


Figure 6 Cirri and penis of *Cantellius alveopora* sp. nov. (MADBK 420501_001), holotype. (A) Cirrus I; (B) cirrus II; (C) cirrus III; (D) cirrus IV; (E) cirrus V; (F) cirrus VI; (G) penis; (H) basidorsal point of penis; (I) tip of penis.

Full-size DOI: 10.7717/peerj.11284/fig-6

surface, lower margin and cutting edge of mandible bearing simple-type setae (Fig. 7D). Lower margin short, inferior angle blunt with simple-type setae (Fig. 7E). Maxillule cutting edge straight without notch, bearing row of 9 large setae (Fig. 7F). Region close to cutting edge with dense simple-type setae, anterior and posterior margins with simple-type setae (Figs. 7G and 7H). Labrum bilobed, lobes separated by a V-shaped notch, 3 sharp teeth on each side of notch (Figs. 7I and 7J).

Habitat. Grows on host coral *A. japonica*. The species located below the extended polyps of *Alveopora*. The barnacles can be located after disturbing the coral polyps to allow them

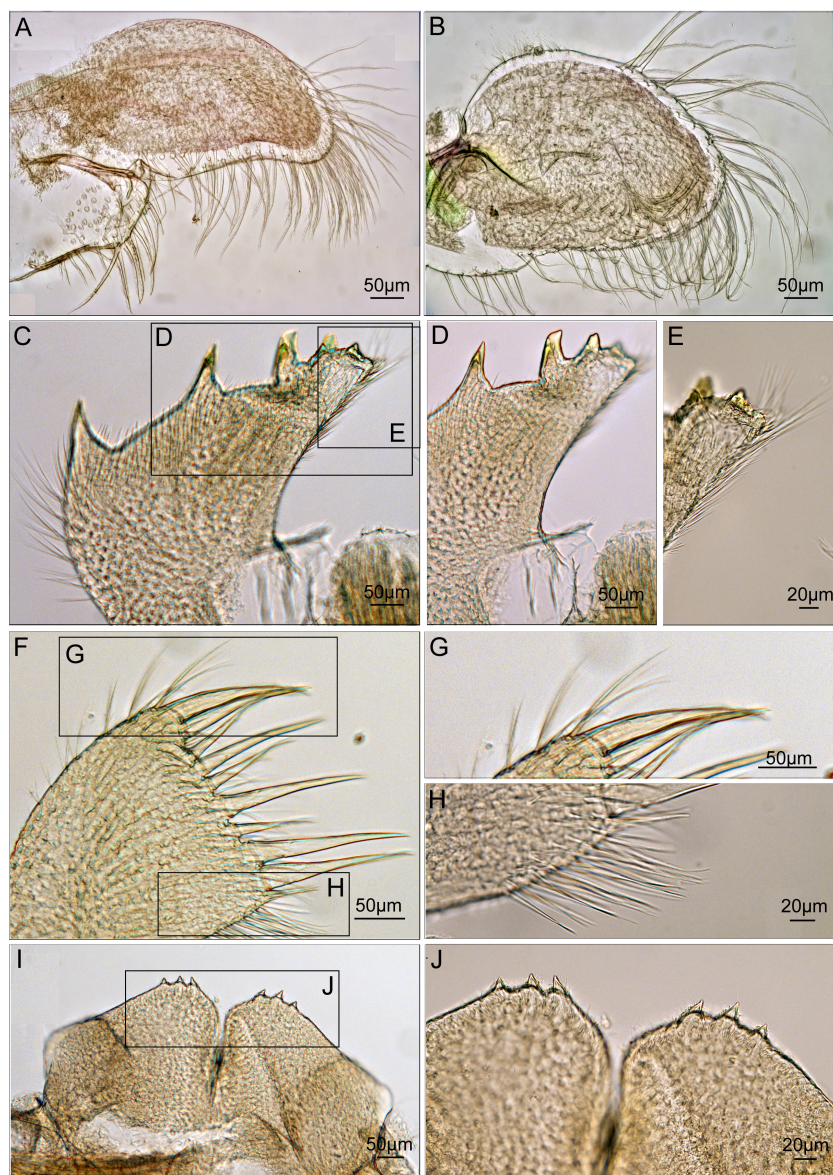


Figure 7 Trophi of *Cantellius alveopora* sp. nov. (MADBK 420501_001), holotype. (A) Maxilla; (B) mandibular palp; (C) mandible; (D) inferior margin of mandible; (E) lower margin with simple-type setae of mandible; (F) maxillule; (G) large simple-type setae on cutting edge; (H) simple-type setae on cutting edge; (I) labrum; (J) teeth on the labrum.

Full-size  DOI: 10.7717/peerj.11284/fig-7

retract into the skeleton, exposing the barnacles when the shelter of the active polyps is removed (Figs. 2A and 2C).

Distribution. At present only recorded in Jeju Island, Korea.

Etymology. Denotes growing on its host *A. japonica* in Korean waters.

Remarks. After examining the type specimens of *C. euspinulosum*, *C. alveopora* sp. nov. differs to *C. euspinulosum* (Broch, 1931) in the morphological characteristics of the scutum and tergum: (1) the scutum has a rostral tooth in *C. alveopora* sp. nov., (2) basal margin

has a shallow adductor plate in *C. alveopora* sp. nov., (3) tergal spur sharp and thin in *C. alveopora* sp. nov., and (4) Basal margin of tergum forms a strong V-shaped in *C. alveopora* sp. nov. Based on these differences, the specimens from Korea were assigned as a new species.

DISCUSSION

Historical remarks on the *Cantellius* taxonomy

The present study reported the first examination of the type specimens of *C. euspinulosum*, providing baseline information for identifying it, along with morphologically close species. The morphology of type specimen of *C. euspinulosum* described by [Broch \(1931\)](#) matched the illustration of *Creusia spinulosa* var. 1 by Darwin. This result supports the conclusion of [Broch \(1931\)](#) that the forma *euspinulosum* represents the *Creusia spinulosa* var. 1 of Darwin. By combining morphological and molecular approaches to examine morphological variation in the opercular plates of *C. euspinulosum* and sequences divergences, we potentially discovered five cryptic species of *C. euspinulosum*. Each cryptic species had different morphological characters in the opercular plates and with respect to geographical distribution.

Based on the morphology of specimens in the opercular plates, the first group of species was considered as *C. euspinulosum* ([Broch, 1931](#)). This group encompassed specimens from Java, Indonesia ([Darwin, 1854](#)), Singapore ([Broch, 1931](#)), Mergui Archipelago in the Andaman Sea ([Nilsson-Cantell, 1938](#)), and Nha Trang, Vietnam ([Poltarukha & Dautova, 2018](#)). This group represents the *C. spinulosa* var. 1 described by Darwin ([Fig. 8](#)). The opercular plates were similar to the type specimens examined in the present study. The scutum lacked a rostral tooth and adductor plate on the basal margin. The tergum had a broad spur. Host corals recorded by these studies included *Acropora*, *Favia*, *Favites*, *Leptoria*, *Montipora*, *Pchyseris*, and *Pocillipora* ([Nilsson-Cantell, 1938](#); [Poltarukha & Dautova, 2018](#)). Thus, *C. euspinulosum* is likely a generalist species distributed in the Indo-Pacific region ([Fig. 8A](#)).

[Nilsson-Cantell \(1938\)](#) described the specimens of *C. euspinulosum* from the Moscos Islands in the Andaman Sea. The scutum of this species has a rostral tooth on the basal margin of the scutum, similar to the specimens from the Jejudo Island in Korea, Ogasawara in Japan, and Palau. However, this specimen had a curved spur on the tergum, contrasting with the specimens collected from Korea, Japan, and Palau. Thus, it might be another cryptic species specific to the Indian Ocean ([Fig. 8B](#)).

[Anderson \(1992\)](#) reported *C. euspinulosum* from New South Wales, Australia. The scutum of this species has a rostral tooth, but the tergum is arrow-shaped ([Fig. 8C](#)). Thus, it might represent another cryptic species present in the Pacific waters of Australia. However, to date, there are no available GenBank sequences of *Cantellius* collected from this region.

[Chan, Chen & Achituv \(2013\)](#) described *C. euspinulosum* originating from Taiwan. The illustration of the scutum showed that the basal margin does not contain an inconspicuous or minute rostral tooth; however, the depressor muscle region is wide and well-developed.

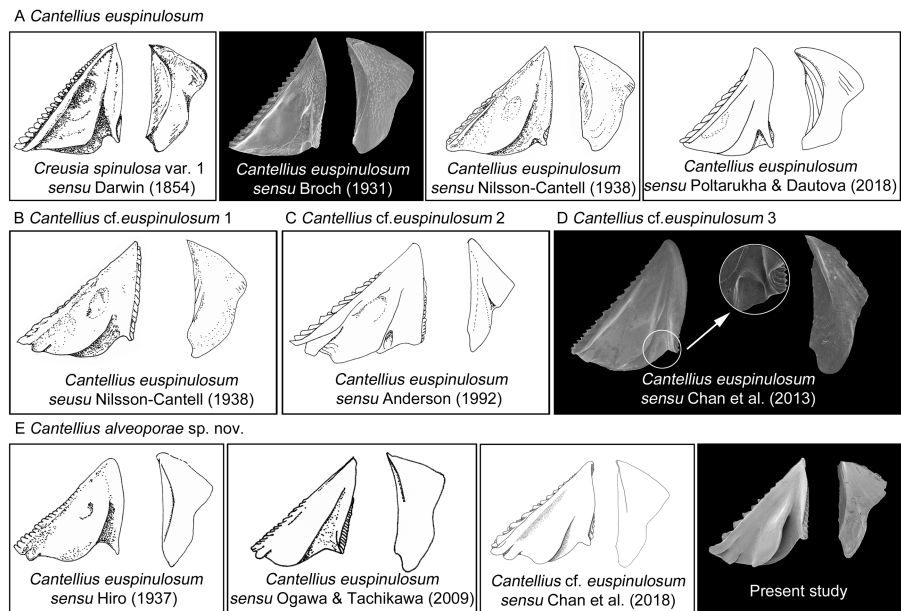


Figure 8 Scanning electron micrographs and revised drawings from previous published Illustrations. (A) *Cantellius euspinulosum*; (B–D) *Cantellius* cf. *euspinulosum* 1–3; (E) *Cantellius alveopora* sp. nov.

Full-size  DOI: [10.7717/peerj.11284/fig-8](https://doi.org/10.7717/peerj.11284/fig-8)

The species is mostly found in the coral *Porites* (Chan, Chen & Aчитuv, 2013). The presence of a separate molecular clade for this species suggests it is another cryptic species (Figs. 5 and 8D).

The last group included *C. alveopora* sp. nov. identified around the Jeju Island (Fig. 8E; present study; Chan et al., 2018). This group might also be represented by *C. euspinulosum* reported from Palau (Hiro, 1937b) and Ogasawara, Japan (Ogawa & Tachikawa, 2009; Fig. 8E). These specimens had a rostral tooth and adductor plate on the basal margin of the scutum, and grow exclusively on the coral *Alveopora* spp. (Fig. 8E). Thus, this species is likely a specialist on *Alveopora* that is distributed in Pacific waters. Molecular studies by Kang et al. (2020) showed that clear genetic population differentiation exists for *A. japonica* coral among Taiwan, Korea, and Japan. Thus, these corals are likely present in all three regions at geological time scales, with limited gene flow across regions. Whether their epibiont *C. alveopora* sp. nov. exhibits similar levels of population differentiation requires further investigation by collecting samples from different geographical regions.

Distributions of *Cantellius* species and ecological implications

The genus *Cantellius* is only present in the Indo-Pacific region. From reviewing the global distribution records of *Cantellius* (Fig. 9), the representative species diversity could be seen from several countries encompassing Japan (13 species), Taiwan (11 species), Palau (10 species), the Philippines (7 species), and Singapore (5 species), in order. Such result might be resulted from more extensive sampling effort in some specific regions followed by fine taxonomy works on coral barnacles (Hiro, 1935; Hiro, 1937a; Hiro, 1937b; Chan, Chen &

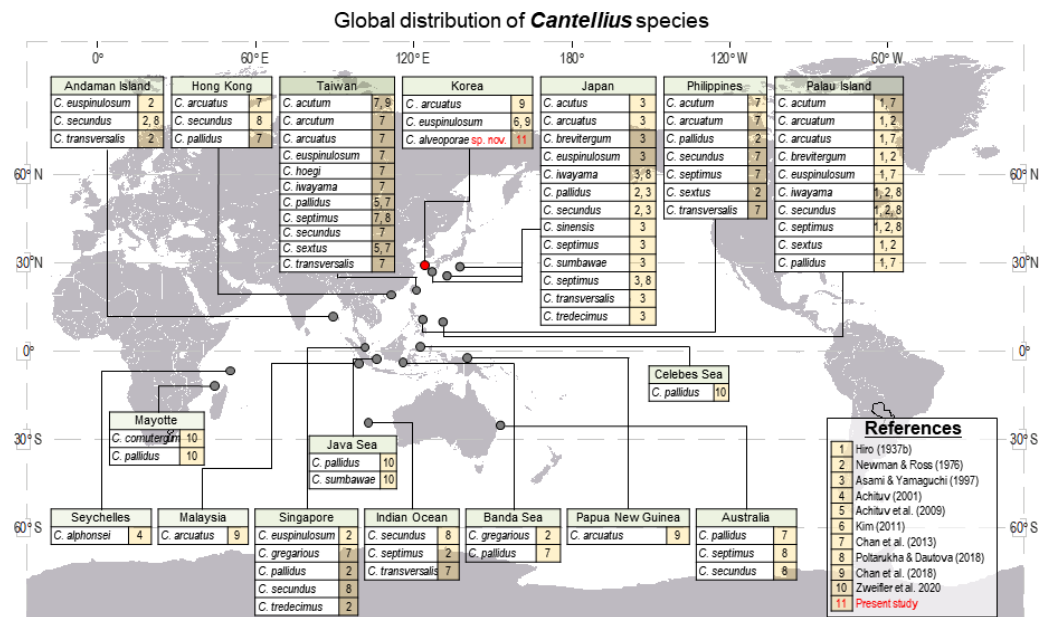


Figure 9 Global distribution of *Cantellius* species, with a total of 19 species reported including three species in Korea. For clarity, literatures in figure were represented by numerals. 1 = Hiro, 1937b, 2 = Newman and Ross, 1976, 3 = Asami and Yamaguchi, 1997, 4 = Achituv, 2001, 5 = Achituv, Tsang & Chan, 2009, 6 = Kim, 2011, 7 = Chan, Chen & Achituv, 2013, 8 = Poltarukha and Dautova, 2018, 9 = Chan et al., 2018, 10 = Zweifler et al., 2020, 11 = Present study.

Full-size [DOI: 10.7717/peerj.11284/fig-9](https://doi.org/10.7717/peerj.11284/fig-9)

Achituv, 2013; Utinomi, 1962). Meantime, climate condition and management practices on sustaining coral habitats would also be acknowledged.

All other countries showed relatively lower species diversity in *Cantellius*, with maximum of three *Cantellius* species being documented. The occurrence of at least one species was reported from the Andaman Island, Australia, Hong Kong, Indian Ocean, Korea, the Banda Sea, Malaysia, Papua New Guinea, and Seychelles. A lesser species diversity in these areas would be collectively explained by inadequate study, sampling endeavor, decreasing population of host corals, etc.

Cantellius alveopora sp. nov. was identified in the present study, and is a specialist on *A. japonica* coral. *Alveopora japonica* is high latitude coral that is distributed in the waters of southern Taiwan, the Jeju Island, Korea, and around the Honshu Island, Japan (Veron, 2002). This coral is an important foundation species on high latitude coral reefs, and forms secondary habitats for other species, including coral barnacles (Noseworthy et al., 2016). Under the effect of global climatic change, the water temperature of the west Pacific is increasing, particularly in the waters around Korea. Over the last 51 years, the water temperature in the Pacific has increased by 1.23 °C, while that around Korea is 2.5 times greater than the global trend (Belkin, 2009; Han & Lee, 2020).

Recent studies documented that current global warming might increase the recruitment and abundance of *A. japonica* around Korea (Denis et al., 2015; Vieira et al., 2016). Thus, the abundance of *C. alveopora* sp. nov. would be also expected to increase with that of *A.*

japonica. Phylogenetic analysis of the coral *A. japonica* collected from the southern waters of Japan, Jeju Island in Korea, and Taiwan showed that *Alveopora* forms three molecular clades matching these three regions (Kang et al., 2020). Thus, *A. japonica* in Korea would have established over a long geological history. Therefore, the coral barnacle *C. alveopora* sp. nov. might exhibit genetic divergence in Japan, Korea, and other Pacific locations, with DNA-based assessments being required to confirm this hypothesis.

Meantime, the current global climatic changes and the bleaching events of corals in the Pacific, including Korean waters, might impact both corals and coral symbiotic fauna. As the coral reef assemblages on the Jeju Island, Korea is marginal community, *Cantellius* diversity would be limited to the southern part of the Korean coastal waters. Accordingly, a drastic effect on the diversity of *Cantellius* would be prospected. Such impact would increase for those especially having narrower latitudinal distribution for *C. hoegi* and *C. brevitergum* which presently recorded in Taiwan and Palau only, respectively. Further studies on diversity and biogeography of coral barnacles should be conducted in the coral triangle region, and only knowing more on the detailed diversity pattern can allow better management and prediction of future diversity of coral associated barnacles in the Indo-Pacific region (Tittensor et al., 2010).

ACKNOWLEDGEMENTS

We would like to thank Prof. Kwang-Sik Choi (School of Marine Biomedical Science, Jeju National University) for assisting with field collection. The authors would like to thank the reviewers, Christine Ewers-Saucedo and the other anonymous reviewer for giving constructive comments on the MS. Thanks to Danny Eiby-Jacobsen and Niklas Dreyer (Zoological Museum, University of Copenhagen) for arranging museum loans of specimens from Zoological Museum, University of Copenhagen, Denmark.

ADDITIONAL INFORMATION AND DECLARATIONS

Funding

This work was supported by the projects entitled “Ecosystem-Based Analysis and Decision-Making Support System Development for Marine Spatial Planning [grant number 20170325]” funded by the Ministry of Oceans and Fisheries, Korea. The funders had no role in study design, data collection and analysis, decision to publish, or preparation of the manuscript.

Grant Disclosures

The following grant information was disclosed by the authors:
Ministry of Oceans and Fisheries, Korea: 20170325.

Competing Interests

The authors declare there are no competing interests.

Author Contributions

- Hyun Kyong Kim and Benny K.K. Chan conceived and designed the experiments, performed the experiments, analyzed the data, prepared figures and/or tables, authored or reviewed drafts of the paper, and approved the final draft.
- Sung Joon Song and Jong Seong Khim analyzed the data, authored or reviewed drafts of the paper, and approved the final draft.

Field Study Permissions

The following information was supplied relating to field study approvals (i.e., approving body and any reference numbers):

Field collections in the present study were approved under permits (No. 2436, 2016) from the National Institute of Biological Resources, Jeju Special Self-Governing Province.

DNA Deposition

The following information was supplied regarding the deposition of DNA sequences:

The sequencing data of the new species is available in an earlier publication reporting *Cantellius cf. euspinulosum* in PLOS ONE ([Chan et al., 2018](#)).

The sequences described here are available at GenBank: [MG878707](#) to [MG878715](#) for COI and [MG878770](#) to [MG878772](#), [MG878825](#) to [MG878827](#) and [MG878831](#) to [MG878833](#) for 12S.

These GenBank sequences are listed in [Table S1](#).

Data Availability

The following information was supplied regarding data availability:

The sequencing data of the new species is available in our earlier publication reporting *Cantellius cf. euspinulosum* in PLOS ONE ([Chan et al., 2018](#)). The location of each specimen, the specimen identification/ accession number and host information are available in [Table S1](#).

New Species Registration

The following information was supplied regarding the registration of a newly described species:

Publication LSID: urn:lsid:zoobank.org:pub:4FCF5CC1-BC6B-4F22-A905-B9E1748E646C.

Cantellius alveopora sp. nov. LSID:

urn:lsid:zoobank.org:act:F2A21CA9-CCBE-4C60-8B4A-98E3545792E5.

Supplemental Information

Supplemental information for this article can be found online at <http://dx.doi.org/10.7717/peerj.11284#supplemental-information>.

REFERENCES

- Achituv Y. 2001.** *Cantellius alphonsei* n. sp., a new coral-inhabiting barnacle (Cirripedia, Pyrgomatinae) of *Montipora*. *Crustaceana* **74**:617–626
[DOI 10.1163/156854001750377894](https://doi.org/10.1163/156854001750377894).

- Achituv Y, Tsang LM, Chan BKK. 2009.** A new species of *Cantellius* and a redescription of *C. sextus* (Hiro, 1938) (Cirripedia, Balanomorpha Pyrgomatidae) from the elephant skin coral, *Pachyseris speciosa* (Dana, 1846) (Scleractinia, Agariciidae) from Taiwan. *Zootaxa* **2022**:15–28 DOI [10.11646/zootaxa.2022.1.2](https://doi.org/10.11646/zootaxa.2022.1.2).
- Anderson DT. 1992.** Structure, function and phylogeny of coral-inhabiting barnacles (Cirripedia, Balanoidea). *Zoological Journal of the Linnean Society* **106**:277–339 DOI [10.1111/j.1096-3642.1992.tb01249.x](https://doi.org/10.1111/j.1096-3642.1992.tb01249.x).
- Asami K, Yamaguchi T. 1997.** Distribution of living and fossil coral barnacles (Cirripedia; Pyrgomatidae) in Japan. *Sessile Organism* **14**:9–16 DOI [10.4282/sosj.14.9](https://doi.org/10.4282/sosj.14.9).
- Belkin IM. 2009.** Rapid warming of large marine ecosystems. *Progress in Oceanography* **81**:207–213 DOI [10.1016/j.pcean.2009.04.011](https://doi.org/10.1016/j.pcean.2009.04.011).
- Broch H. 1931.** Papers from Dr. Th. Mortensen's Pacific Expedition 1914–16. LVI. Indomalayan Cirripedia. *Videnskabelige meddelelser fra den Naturhistoriske forening Kjobenhavn* **91**:1–146.
- Chan BKK, Chen YY, Achituv Y. 2013.** *Crustacean fauna of Taiwan: Barnacles, vol II- Cirripedia: Thoracica: Pyrgomatidae*. Taipei: Biodiversity Research Center, Academia Sinica Press.
- Chan BKK, Garm A, Høeg JT. 2008.** Setal morphology and cirral setation of thoracican barnacle cirri: adaptations and implications for thoracican evolution. *Journal of Zoology* **275**:294–306 DOI [10.1111/j.1469-7998.2008.00441.x](https://doi.org/10.1111/j.1469-7998.2008.00441.x).
- Chan BKK, Høeg JT. 2015.** Diversity of lifestyles, sexual systems, and larval development patterns in sessile crustaceans. In: Thiel M, Watling L, eds. *Lifestyles and Feeding Biology*. New York: Oxford University Press, 14–34.
- Chan BKK, Wong KJ, Cheng YR. 2020.** Biogeography and host usage of coral-associated crustaceans: barnacles, copepods and gall crabs as models. In: Thiel M, Poore G, eds. *The Natural History of the Crustacea: Evolution and Biogeography of the Crustacea*. 12. New York: Oxford University Press.
- Chan BKK, Xu G, Kim HK, Park J-H, Kim W. 2018.** Living with marginal coral communities: diversity and host-specificity in coral-associated barnacles in the northern coral distribution limit of the East China Sea. *PLOS ONE* **13**:e0196309 DOI [10.1371/journal.pone.0196309](https://doi.org/10.1371/journal.pone.0196309).
- Darwin C. 1854.** A monograph on the sub-class Cirripedia with figures of all the species. In: *The Balanidae, the Verrucidae, etc.* London: Royal Society.
- Denis V, Ribas-Deulofeu L, Loubeyres M, De Palmas S, Hwang SJ, Woo S, Song JI, Chen CA. 2015.** Recruitment of the subtropical coral *Alveopora japonica* in the temperate waters of Jeju Island, South Korea. *Bulletin of Marine Science* **91**:85–96 DOI [10.5343/bms.2014.1032](https://doi.org/10.5343/bms.2014.1032).
- Dreyer N, Chan BKK. 2020.** The diversity and biology of symbiotic and parasitic crustaceans: an introduction. *Journal of Crustacean Biology* **40**:761–764 DOI [10.1093/jcobiol/ruaa082](https://doi.org/10.1093/jcobiol/ruaa082).
- Goldberg WM. 2013.** *The biology of reefs and reef organisms*. Illinois: University of Chicago Press.

- Han IS, Lee JS. 2020.** Change the annual amplitude of sea surface temperature due to climate change in a recent decade around the Korean Peninsula. *Journal of the Korean Society of Marine Environment & Safety* **26**:233–241 DOI [10.7837/kosomes.2020.26.3.233](https://doi.org/10.7837/kosomes.2020.26.3.233).
- Hiro F. 1935.** A study of cirripeds associated with corals occurring in Tanabe Bay. *Oceanogr. Records of Oceanographic Works in Japan* **7**:1–28.
- Hiro F. 1937a.** Studies on Cirripedian Fauna of Japan (II): cirripeds found in the Vicinity of the Seto Marine Biological Laboratory. *Memoirs of the College of Science, Kyoto Imperial University* **12**:385–478.
- Hiro F. 1937b.** Cirripeds of the Palao Islands. *Palao Tropical Biological Statiton Studies* **1**:37–72.
- Kang JH, Jang JE, Kim JH, Kim S, Keshavmurthy S, Agostini S, Reimer JD, Chen CA, Choi KS, Park SR, Lee HJ. 2020.** The origin of the subtropical coral *Alveopora japonica* (Scleractinia: Acroporidae) in high-latitude environments. *Frontiers in Ecology and Evolution* **8**12 DOI [10.3389/fevo.2020.00012](https://doi.org/10.3389/fevo.2020.00012).
- Katoh K, Misawa K, Kuma KI, Miyata T. 2002.** MAFFT: a novel method for rapid multiple sequence alignment based on fast Fourier transform. *Nucleic Acids Research* **30**:3059–3066 DOI [10.1093/nar/gkf436](https://doi.org/10.1093/nar/gkf436).
- Kim IH. 2011.** Invertebrate Fauna of Korea. In: *21: Barnacles*. Seoul: National Institute of Biological Resources, Ministry of Environment.
- Kolbasov GA, Chan BKK, Molodtsova TN, Achituv YAIR. 2016.** Revision of the coral-inhabiting genus *Conopea* (Cirripedia: Archaeobalanidae) with description of two new species of the genera *Conopea* and *Acasta*. *Zootaxa* **4178**:182–208 DOI [10.11646/zootaxa.4178.2.2](https://doi.org/10.11646/zootaxa.4178.2.2).
- Kolbasov GA, Chan BKK, Petrunina AS. 2015.** *Gorgonolaureus bicornutus* sp. nov. (Crustacea: Thecostraca: Ascothoracida) from off south-east Taiwan with notes on morphology and distribution. *Zootaxa* **3972**:328–342 DOI [10.11646/zootaxa.3972.3.2](https://doi.org/10.11646/zootaxa.3972.3.2).
- Kumar S, Stecher G, Tamura K. 2016.** MEGA7: molecular evolutionary genetics analysis version 7.0 for bigger datasets. *Molecular Biology and Evolution* **33**:1870–1874 DOI [10.1093/molbev/msw054](https://doi.org/10.1093/molbev/msw054).
- Malay MCMD, Michonneau F. 2014.** Phylogenetics and morphological evolution of coral-dwelling barnacles (Balanomorpha: Pyrgomatidae). *Biological Journal of the Linnean Society* **113**:162–179 DOI [10.1111/bij.12315](https://doi.org/10.1111/bij.12315).
- Newman WA, Ross A. 1976.** Revision of the balanomorph barnacles: including a catalog of the species. *Memoirs of the San Diego Society of Natueal History* **9**:1–108.
- Nilsson-Cantell CA. 1938.** Cirripedes from the Indian Ocean in the collection of the Indian Museum, Calcutta. *Memoirs of the Indian Museum* **13**:1–81.
- Noseworthy RG, Hong HK, Keshavmurthy S, Lee HJ, Jeung HD, Ju SJ, Kim J-B, Jung S, Choi KS. 2016.** An assemblage of mollusks associated with the high latitude scleractinian coral *Alveopora japonica* (Eguchi 1968) in Jeju Island, off the south coast of Korea. *Ocean Science Journal* **51**:21–31 DOI [10.1007/s12601-016-0003-2](https://doi.org/10.1007/s12601-016-0003-2).

- Ogawa K, Matsuzkai K. 1992. An essay on host specificity, systematic taxonomy, and evolution of the coral-barnacles. *Bulletin of the Biogeographical Society of Japan* 47:87–101.
- Ogawa K, Tachikawa H. 2009. Coral-Inhabiting barnacles from the Ogasawara Islands. *Bulletin of the Biogeographical Society of Japan* 64:89–96.
- Poltarukha OP, Dautova TN. 2018. *Barnacles (Cirripedia, Thoracica) of Nhatrang Bay*. Southern Vietnam: Benthic fauna of the Bay of Nhatrang, 89.
- Roberts CM, McClean CJ, Veron JE, Hawkins JP, Allen GR, McAllister DE, Mittermier CG, Schueler FW, Spalding M, Wells F, Vynne C, Werner TB. 2002. Marine biodiversity hotspots and conservation priorities for tropical reefs. *Science* 295:1280–1284 DOI 10.1126/science.1067728.
- Ross A, Newman WA. 1973. Revision of the coral-inhabiting barnacles (Cirripedia: Balanidae). *Transactions of the San Diego Society of Natural History* 17:137–174.
- Simon-Blecher N, Huchon D, Achituv Y. 2007. Phylogeny of coral-inhabiting barnacles (Cirripedia; Thoracica; Pyrgomatidae) based on 12S, 16S and 18S rDNA analysis. *Molecular Phylogenetics and Evolution* 44:1333–1341 DOI 10.1016/j.ympev.2007.03.026.
- Stamatakis A. 2014. RAxML version 8: a tool for phylogenetic analysis and post-analysis of large phylogenies. *Bioinformatics* 30:1312–1313 DOI 10.1093/bioinformatics/btu033.
- Stella JS, Pratchett MS, Hutchings PA, Jones GP. 2011. Coral-associated invertebrates: diversity, ecological importance and vulnerability to disturbance. *Oceanography and Marine Biology: An Annual Review* 49:43–104.
- Tittensor DP, Mora C, Jetz W, Lotze HK, Ricard D, Berghe EV, Worm B. 2010. Global patterns and predictors of marine biodiversity across taxa. *Nature* 466:1098–1101 DOI 10.1038/nature09329.
- Tsang LM, Chan BKK, Shih FL, Chu KH, Allen Chen CA. 2009. Host-associated speciation in the coral barnacle *Wanella milleporae* (Cirripedia: Pyrgomatidae) inhabiting the Millepora coral. *Molecular Ecology* 18:1463–1475 DOI 10.1111/j.1365-294X.2009.04090.x.
- Tsang LM, Chu KH, Nozawa Y, Chan BKK. 2014. Morphological and host specificity evolution in coral symbiont barnacles (Balanomorpha: Pyrgomatidae) inferred from a multi-locus phylogeny. *Molecular Phylogenetics and Evolution* 77:11–22 DOI 10.1016/j.ympev.2014.03.002.
- Utinomi H. 1962. Studies on the Cirripedian fauna of Japan-VIII. Thoracic Cirripeds from western Kyusyu. *Publications of the Seto Marine Laboratory* 10:211–239 DOI 10.5134/175313.
- Veron JEN. 2002. *New species described in Corals of the World (Vol. 11)*. Townsville: Australian Institute of Marine Science.
- Vieira C, Keshavmurthy S, Ju SJ, Hyeong K, Seo I, Kang CK, Hong HK, Chen CA, Choi KS. 2016. Population dynamics of a high-latitude coral *Alveopora japonica* Eguchi from Jeju Island, off the southern coast of Korea. *Marine and Freshwater Research* 67:594–604 DOI 10.1071/MF14330.

Zweifler A, Simon-Blecher N, Pica D, Chan BKK, Roth J, Aчитuv Y. 2020. A stranger among us: the occurrence of *Cantellius* (Balnoidea: Pyrgomatidae) an epibiont of scleractinians in stylasterids (Hydrozoa). *Zoological Journal of the Linnean Society* **190**:1077–1094 DOI [10.1093/zoolinnean/zlaa017](https://doi.org/10.1093/zoolinnean/zlaa017).