

Assessing red deer hunting management in the Iberian Peninsula: the importance of longitudinal studies

Antonio José Carpio Camargo^{1,2}, Jose Barasona³, Pelayo Acevedo², Yolanda Fierro⁴, Christian Gortazar², Carlos Vigal⁵, Ángel Moreno⁵ and Joaquin Vicente²

¹ Department of Zoology, University of Córdoba, Córdoba, Spain

² SaBio, Instituto de Investigación en Recursos Cinegéticos, IREC (CSIC-UCLM-JCCM), Ciudad Real, Spain

³ VISAVET Health Surveillance Centre, Department of Animal Health, Veterinary School, Complutense University of Madrid, Madrid, Spain

⁴ Yolfi Properties, Ciudad Real, España

⁵ Los Quintos de Mora, Organismo Autónomo de Parques Nacionales, Toledo, Spain

ABSTRACT

Understanding the dynamics of a wildlife population in relation to hunting strategies is essential to achieve sustainable management. We used monitoring data over 25 years from two red deer (*Cervus elaphus*) populations with different management (with and without supplemental feeding) in South Central Spain to: (i) characterise the density dependence of population dynamics under contrasted management, and (ii) provide the basis for sustainable extraction by considering the theoretical maximum sustainable yield (MSYt) as the reference. The red deer population displayed a typical management reactive culling approach ('saw-tooth-like' curves), with occasional strong annual harvests but not occurring on a regular basis. Interestingly, we found reduced population growth at high densities in both populations, indicating that density-mediated factors determined population growth even when artificial feeding was provided. However, no effects of sex not age class of the extracted population on the population growth rate were determined. The total number of animals hunted was only slightly above those predicted by MSYt (i.e. $K_{50\%}$) in both populations, despite high densities close to theoretical K , being consistent throughout the study period. The extraction rates (30.3 and 34.0%, for supplemented and unsupplemented populations, respectively) were 13.3% and 10.2% lower compared to the MSYt situation in the unsupplemented and supplemented populations, respectively. Long term population monitoring data provided feasible and suitable baseline values to optimise the sustainable exploitation of red deer populations in the Mediterranean ecosystem under these contrasting management scenarios. Adaptive management, involving objective-driven decision making informed by data on red deer population dynamic, can contribute (i) to maximising the total extraction over the long term while (ii) reducing the ecological impact of high population densities.

Submitted 25 June 2020

Accepted 10 January 2021

Published 5 February 2021

Corresponding authors

Antonio José Carpio Camargo,

antonio.carpio@uclm.es

Pelayo Acevedo,

pacevedo@irec.csic.es

Academic editor

Nigel Yoccoz

Additional Information and
Declarations can be found on
page 16

DOI 10.7717/peerj.10872

© Copyright

2021 Carpio Camargo et al.

Distributed under

Creative Commons CC-BY 4.0

OPEN ACCESS

Subjects Conservation Biology, Ecology, Zoology, Population Biology

Keywords Artificial feeding, *Cervus elaphus*, Management, Population dynamics, Population growth, Recruitment rate

INTRODUCTION

The populations of deer species have increased and expanded throughout Europe and North America over the last century (Apollonio, Andersen & Putman, 2010; Mysterud, 2010; VerCauteren et al., 2011) due to several factors, among which the change in management (e.g. use the quotas, hunting legislation), has been highlighted as a key factor (Acevedo & Cassinello, 2009; Putman, Apollonio & Andersen, 2011; Carpio et al., 2017). The management of deer has become a focus of research with the recent large increases in population size (Skonhøft et al., 2013; Martínez & Martín, 2017). Currently, the red deer (*Cervus elaphus*) population sizes in numerous areas are above the biological and humans dimensions of carrying capacities (Carpenter, Decker & Lipscomb, 2000) and therefore undesirable ecological situations and social conflicts are becoming more frequent (Perea, Girardello & San Miguel, 2014; Vicente et al., 2019; Martínez-Jaúregui et al., 2020). In a global scenario in which naturally occurring large predators are scarce, the regulation of populations by hunting is one of the most relevant driver of deer population dynamics (Milner et al., 2006). However, density-dependence, which depends on intraspecific competition together with environmental stochasticity (e.g. drought, heavy snow and other non-seasonal processes), are natural determinants that also affect ungulate population dynamics that can alter the management goals and therefore the hunting rents (Sæther, 1997; Torres-Porras, Carranza & Perez-Gonzalez, 2009; Rodriguez-Hidalgo et al., 2010).

The successful management of wildlife populations—with ecological and/or economical goals—requires a clear understanding of the processes involved in population dynamics from a long-term perspective (Gaillard, Festa-Bianchet & Yoccoz, 1998). The recruitment rate expresses the effect of a broad set of extrinsic and intrinsic factors on population dynamics (Hamel, Côté & Festa-Bianchet, 2010). The number of deer harvested annually should be based on the population recruitment (i.e. the number of surviving calves born the previous year) and the residual population from the previous hunting season (Skonhøft et al., 2013). Much of the theory underlying harvest management, including the concept of density dependence, is based on carrying capacity (Martínez & Martín, 2017; Kapota & Saltz, 2018). According to theoretical population growth models (Schoener, 1973), the highest levels of recruitment rate are reached at medium population densities (close to 50–60% of the carrying capacity for red deer; Buckland et al. (1996) for adult stags; Mandujano (2007) for white-tailed deer; DeCalesta & Eckley (2019)), since density-dependent mechanisms that operate mainly through female body condition and fertility apparently peak after these densities limit further population growth (Borowik, Wawrzyniak & Jędrzejewska, 2016). There is an ideal point on the curve of density dependence where the harvest rate is maximised (maximum sustainable yield, MSY), that is the largest yield that can be taken from a population over an indefinite period. MSY is an interesting reference point for comparisons (for instance, within a population through time) because it meets the requirements of maximising hunting.

The Iberian red deer (*C. e. hispanicus*) is one of the most important game species in the Iberian Peninsula, particularly in the central and southern regions, where big game hunting is a relevant socio-economic activity (Fierro et al., 2002; Carranza, 2010;

Vingada et al., 2010). The prevailing management systems in these areas often involve fencing, artificial feeding and translocations (Rodríguez-Hidalgo et al., 2010; Martínez-Jaúregui & Herruzo, 2014). Current local densities may reach over 40 ind/km² (Vicente et al., 2007; Acevedo et al., 2008), which might lead to unsustainable situations, triggering negative effects at different levels of the ecosystem (Gortázar et al., 2006; Carpio et al., 2014a, 2014b; Perea, Girardello & San Miguel, 2014). There is a need to understand the population dynamics of red deer in Mediterranean areas in order to establish sustainable management plans based on scientific knowledge and that are compatible with maximising hunting as a relevant socio-economic activity while impeding the negative impacts of overabundance. We used monitoring data from over 25 years in 2 red deer populations in South Central Spain with different management systems (with and without supplemental feeding) to: (i) characterise the density dependence of population dynamics under contrasted management, and (ii) provide the basis for sustainable extraction, considering the population-specific theoretical maximum sustainable yield (MSYt) as a practical reference for comparison purposes.

MATERIALS AND METHODS

Study area

The two study populations are located in Castilla-La Mancha, South Central Spain. The Mediterranean woodlands and scrublands in the area constitute a continuous distribution of independently managed private or public hunting estates, including natural reserves. One of the estates is a private property devoted to game hunting (LM; 38°55'N, 0°36'E; 600–850 m a.s.l.) and the other is a public hunting preserve (LQ; 39°45'N, 4°15'E; 600–1,100 m a.s.l.). Since 1989, the LM deer population has received supplementary forage (protein-rich pellets) all the year-round, and in summer, alfalfa (*Medicago sativa*) has been supplied on the ground. The deer population in the LQ estate did not receive supplementary forage. They were selected as being representative of the more frequent typologies of big-game hunting estates in Mediterranean Spain. Table 1 summarises the main characteristics of the study areas.

The Mediterranean habitat is characterised by savannah-like landscape called 'dehesas', with evergreen oak, *Quercus ilex*, woodlands, and scrublands (dominated by *Cystus* spp., *Erica* spp., *Pistacia* spp., *Phyllirea* spp. and *Rosmarinus* spp.), scattered pastures and small areas of crops.

Estimation of red deer density and population growth rates

Between 1989 and 2015, the annual harvest rates and deer population sizes were estimated at both hunting estates. The deer density was estimated in the LQ estate by spotlight censuses from a 4 × 4 vehicle that were performed during August–September. Each transect was an average of 20.3 km ± 2.34 (S.E.) in length, and the speed of the vehicle was <15 km/h. The distance between the observer and the deer was measured with a Leica LRF 1200 Scan telemeter (Solms, Germany) (range 15–1,100 m; precision ±1 m/±0.1%). The annual abundance of the deer was estimated using the distance sampling method (Buckland et al., 2004) with Distance 6.0 software (Thomas et al., 2010). Half-normal,

Table 1 Characteristics of the two red deer populations (mean values \pm 95% IC SD) for the complete temporal series under both types of management systems (LQ, without supplemental feeding; LM, with supplemental feeding).

Population parameter	LM	LQ
Surface (ha)	868	6862
Density (deer/km ²)	37.8 \pm 14.8	32.9 \pm 10.3
Sex-ratio (n ^o females/n ^o males)	1.45 \pm 1.84	1.35 \pm 0.49
Birth rate (n ^o calves/n ^o females)	0.63 \pm 0.19	0.48 \pm 0.09
Survival rate (n ^o yearlings/n ^o of calves from previous year) * 100	95.2 \pm 56	58.9 \pm 39.9
% Annual harvest (% of harvested population)	23.8 \pm 16.8	17.5 \pm 16.2
Harvest density (n ^o deer hunted/km ²)	9.1 \pm 7.5	5.6 \pm 4.7
Recruitment rate ($N_{1,t+1}/N_{\geq 1,t}$)	0.34 \pm 0.22	0.16 \pm 0.12
% calves	25.1 \pm 6.6	21.1 \pm 4.1
% females	40.4 \pm 8.2	44.2 \pm 5.4
% yearlings	23.9 \pm 10.2	12.3 \pm 6.4
% adults	62.9 \pm 7.5	72.8 \pm 5.6
Growth rate ($N_{\geq 1,t+1}/N_{\geq 1,t}$)	1.06 \pm 0.43	1.00 \pm 0.41

uniform and hazard rate distributions for the detection function were fitted against the data using cosine, Hermite polynomial and simple polynomial adjustment terms, which were fitted sequentially. The selection of the best model and adjustment term were based on Akaike's Information Criterion (AIC). More details on the analytical framework can be found in [Acevedo et al. \(2008\)](#).

The size of the deer population at the LM estate ([Table 1](#)) was estimated annually by using repeated direct counts at feeding sites at the end of July and during the rutting season (total = 8 days/year), that is, September and October (see [Rodriguez-Hidalgo et al., 2010](#)). In the summer, most deer congregate around feeding sites and are counted at dusk. The estimates obtained from direct counts are equivalent to those obtained using the same approach used in LQ, that is spotlight counts and distance sampling. We evaluated the consistence between distance sampling and direct counts at feeding sites in three different years in LM (2003, 2006 and 2020). The results showed a high equivalence in the estimates obtained; 0.32 (CV 16.8%)–0.36 deer/km² (distance sampling—direct counts), 0.41 (CV 24.1%)–0.42 deer/km² and 0.41 (CV 20.4%)–0.48 deer/km² for 2003, 2006 and 2020, respectively.

We obtained the sex- and age-specific structure of the deer populations during 1989–2015 period using the number of animals recorded for each sex and age during the transects (LQ) and direct counts (LM). We registered the number of calves (<1 year old), yearlings (between 1 and 2 years) and adults (>3 years) ([Landete-Castillejos et al., 2004](#)). We combined the numbers for both sexes and defined the sum of yearlings plus adults as the total population size in year t ($N_{\geq 1,t}$). We defined the number of yearlings as the number of recruits at the end of the year. We calculated the adult sex/ratio (females/males), the birth rate (calves/females), the survival rate (yearlings/calves from the previous year)* 100, the recruitment rate in year t: ($N_{1,t+1}/N_{\geq 1,t}$) ([Ueno, Kaji & Saitoh, 2010](#)) and the

exponential population growth in year t ($\ln(N_{t+1}/N_t)$) (Hebblewhite, Pletscher & Paquet, 2002); where N_t represents the population of a given year and N_{t+1} is the population of the next year to characterise the population dynamics. Henceforth, we refer to the exponential population growth rate as the population annual growth rate. We specify that our study was based on the logistic population growth model (which is not linear). However, as abovementioned, $\ln(N_{t+1}/N_t)$ (i.e. Exponential growth rate or intrinsic rate of increase) is a linear function of N (Hebblewhite, Pletscher & Paquet, 2002). The intrinsic rate of increase, as defined in the exponential equation, is not a constant number at all but rather is itself a function of the density of the population, and it can be assumed a linear approximation.

Data analysis: theoretical maximum sustainable yields harvest (MSYt)

Ecological carrying capacity can be approached by the number of individuals that the environment 'can support' in a given area (Chapman & Byron, 2018). Therefore, in this study the ecological carrying capacity, represented by the K of the logistic equation, is useful to study the balance between forage resources, negative impacts and population productivity. The theoretical Maximum Sustainable Yields harvest (MSY) is the maximum number of deer that can be harvested from the population on a continual basis (McCullough, 1992), in this case, based on the logistic population growth model. Theoretically, and to establish a reference practical point for internal comparisons in our study populations, we considered that the population level that produces the MSY is approximately 50% of K (Jensen, 1996), which has been referred to as the Economic Carrying Capacity (Caughley, 1979), or I-Carrying Capacity (i.e. $K/2$ or population abundance at MSY, MacNab, 1985; McCullough, 1992; Buckland et al., 1996). When the growth rate (as density-dependence relationship) is modelled by logistic equation, r_0 is the maximal rate of population growth from low density and K is indicated where the regression cuts the X axis (i.e. exponential population growth is 0). Under the logistic model, a negative linear relationship between the growth rate and density (including confidence intervals) is expected, which is used as a simple test of statistical density dependence (Wolda & Dennis, 1993; Reynolds & Freckleton, 2005; Lebreton & Gimenez, 2013).

A linear model was used to evaluate the effects of density on the population dynamics and calculate the related parameters. Beyond analysing the complete set of potential factors determining the growth rate (the authors, in preparation) our model included as covariables the age and sex structure of the harvest. Age and sex structure are critical factors regarding the demographic parameters affected by population density or supplementary feeding, and they are quite relevant in determining culling strategies (Trenkel, 2001). For this purpose, age class was simplified to individuals <1 year/(calves) and >1 year (broadly, adults). These extractions, separately by sex and ages, are expressed in terms of proportion of individual extracted respect to available numbers. In order to determine the potential impacts of factors depending on the management regime (supplement vs unsupplemented), the population density and their respective interactions with other explanatory factors were included in the model.

The fitted linear regression on the exponential growth rate on the density helped us to calculate the theoretical K parameter, that is the size of the population for which the population growth rate is 0. The residual population accommodating MSY was also calculated as a proxy to a sustainable extraction of the populations (because it meets the requirements of maximising hunting while reducing the impacts of overabundance). According to the logistic model, at low densities, the population growth rate is the maximum, but the product (rN = net recruitment (number of net individuals that is added to the population per unit of time), r is referred to as the intrinsic rate of increase) is low. As density increases, the growth rate decreases and N increases, the net recruitment increases to a maximum $K/2$. This point, the MSY, is the theoretical maximum number of individuals that can be extracted from the population on the long-term. Since this theoretical parameter was considered a proxy for purposes of comparison between the populations in our illustrative scenario, following *Stephens & Sutherland (1999)* we were conservative in calculating and establishing a safety margin to avoid overexploitation (data for deer in the literature approaches 60% of K) (*Clutton-Brock et al., 2002; Kaji et al., 2010*). The calculation of such parameters allows us to compare real population extraction rates and those based on the assumption of the MSY value over years in two sets of contrasting data under different management regimes.

RESULTS

Characterization of red deer population dynamics in the contrasted study populations

The densities in LM population increased since 1989 and ranged around 40 ind/km² with considerable peaks (reaching above 50 ind/km² in 1995, *Fig. 1*). LQ population ranged consistently between 30 and 40 ind/km² overall, until 2009 with a consistent declining trend at the end of the study period, although with considerable peaks (e.g. high 2009), reaching the lowest level in 2014 (slightly above 20 ind/km²). With the exception of the first 4 years, the density was consistently higher in LM than in LQ population (*Table 1; Fig. 1*). Overall, densities were lower in LQ population, and population changes in both populations did not show any regular and/or cyclical pattern but marked 'saw-tooth-like' curves.

The exponential growth rate achieved values close to 0 in both populations (LQ = 0 y LM = 0.05); however, annual variations were significant, with positive and negative values (*Table 1*). LM population presented higher birth, recruitment survival rates, and proportions of calves and yearlings; while the proportions of females and adults were higher in LQ population (*Table 1*). In addition, the proportion of the population that was annually harvested and the harvest density were higher in LM population, with relevant annual variations in both study areas (*Table 2; Fig. 1*). Both populations presented sex ratios balanced slightly favourably to females.

Regarding harvesting, the extraction rates followed irregular patterns (see *Fig. 1*), alternating between periods of high and low hunting. The proportion of harvested tended to increase in LQ population during the last period of study resulting in a reduction of

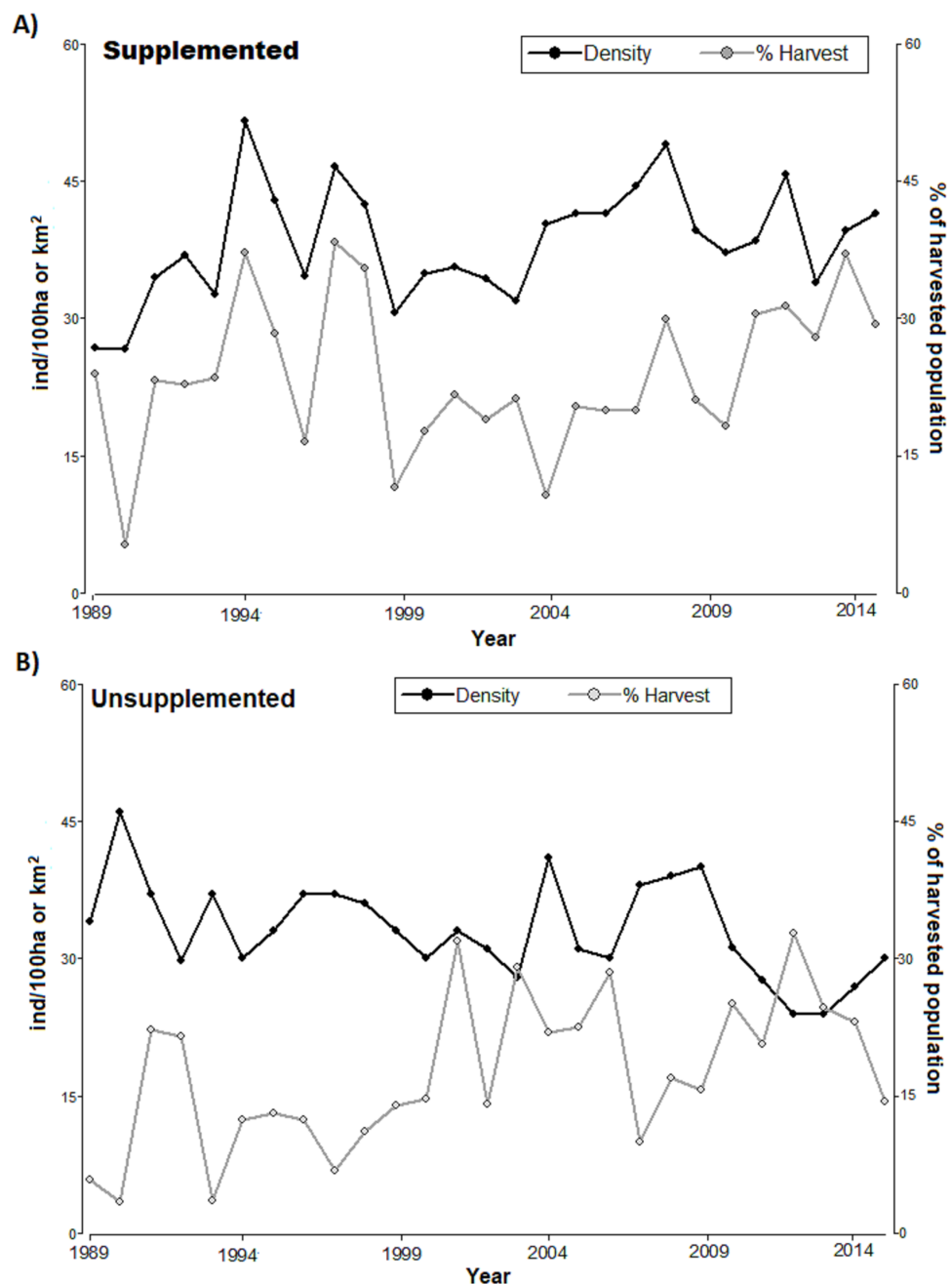


Figure 1 Annual population density (black line, ind/km²) and annual harvest (grey line, % of harvested population) for (A) supplemented and (B) unsupplemented populations, during the study period. [Full-size !\[\]\(fd7fe780e8fd8eece60268c87d0c3e04_img.jpg\) DOI: 10.7717/peerj.10872/fig-1](https://doi.org/10.7717/peerj.10872/fig-1)

density (significant negative relationship between the annual proportion of harvest and density along the study period in LQ population, Beta = -0.35 , $F = 12.9$, $p < 0.01$). There was an association between harvest density and population density in LM population, especially during 1989–1999 ($p < 0.05$, $T = 2.21$); however, low extraction rates during 2000–2007 led to an irregular, but increasing, density pattern.

Table 2 Total number of animals hunted from each population per year, theoretical maximum sustainable yield; MSYt) and differences between real values and those under the assumption of MSYt, separately for each management system or population (LQ, without supplemental feeding; LM, with supplemental feeding).

Year	LQ				LM			
	N° Total hunted	% of hunted MSYt	Sex-age class	Differences in real value and %	N Total hunted	% of hunted MSYt	Sex-age class	Differences in real value and %
1989	138	40.00	50/20/68	-207/-60%	37	63.79	12/10/15	-21/-36%
1990	107	31.01	37/16/54	-238/-69%	11	18.97	10/0/1	-47/-81%
1991	564	163.48	103/33/428	219/63%	54	93.10	20/4/30	-47 -7%
1992	444	128.70	115/33/296	99/29%	69	118.97	28/9/32	11/19%
1993	91	26.38	46/5/40	-254/-74%	78	134.48	42/8/28	20/34%
1994	256	74.20	50/20/186	-89/-26%	108	186.21	49/12/47	50/86%
1995	298	86.38	98/70/130	-47/-14%	130	224.14	54/30/46	72/124%
1996	315	91.30	120/28/167	-30/-9%	62	106.90	38/12/12	4/7%
1997	173	50.14	113/10/50	-172/-50%	118	203.45	52/22/44	60/103%
1998	275	79.71	161/20/94	-70/-20%	148	255.17	63/28/57	90/155%
1999	317	91.88	136/31/150	-28/-8%	42	72.41	19/2/21	-16/-28%
2000	302	87.54	117/26/159	-43/-12%	47	81.03	13/7/27	-11/-19%
2001	723	209.57	30/169/524	378/109%	66	113.79	27/6/33	8/14%
2002	301	87.25	73/60/168	-44/-13%	59	101.72	31/9/19	1/2%
2003	558	161.74	132/118/308	213/62%	64	110.34	29/9/26	6/10%
2004	619	179.42	155/127/337	274/79%	29	50.00	26/1/2	-29/-50%
2005	478	138.55	83/130/265	133/39%	72	124.14	33/11/28	14/24%
2006	588	170.43	142/128/318	243/70%	72	124.14	27/14/31	14/24%
2007	259	75.07	85/34/140	-86/-25%	73	125.86	32/13/28	15/26%
2008	454	131.59	83/126/245	109/32%	118	203.45	42/23/53	60/103%
2009	430	124.64	119/104/207	85/25%	91	156.90	38/14/39	33/57%
2010	537	155.65	181/155/201	192/56%	63	108.62	19/23/21	5/9%
2011	392	113.62	134/67/191	47/14%	100	172.41	42/18/40	42/72%
2012	539	156.23	145/152/242	194/56%	107	184.48	45/30/32	49/84%
2013	407	117.97	81/77/249	62/18%	114	196.55	54/22/38	56/97%
2014	429	124.35	134/88/207	84/24%	112	193.10	38/27/47	54/93%
2015	297	86.09	101/28/168	-48/-14%	108	186.21	38/26/44	50/86%
Annual Mean	381	110.43	105/69/207	36/year 10.4%	79	136.21	34/14/31	21.7/year 37.4%
Total	10,291		2,824/1,875/ 5,592	976	2152		921/390/ 841	586

Note:

MSYt is achieved at a population density and size of 16.32 and 19.73 ind/km² and 1,136.2 and 171.2 ind. for LQ and LM, in K_{50%} respectively. MSYt values assume 5% natural mortality (Benton, Grant & Clutton-Brock, 1995). MSYt value per year was 345 for LQ (9,315 for all period) and 58 for LM (1,566 for all period). Sex-age class correspond to stags/calves/hinds, respectively.

Harvesting parameters in relation to the MSYt value

The linear model evaluating the relationships between the exponential annual population growth rates and densities calculated for both populations for the period 1989–2015

Table 3 Linear Model, to explain exponential growth rate.

Variable	Df	F-value	p-value	Coefficient ± E.S.
Intercept	1	20.2	0.001	0.7 ± 0.21
Area	1	0.07	n.s.	0.026 ± 0.31
Density-1	1	30.3	0.001	-2.05 ± 0.44
Male hunted/Male total	1	1.13	n.s.	0.13 ± 0.07
Female hunted/Female total	1	0.05	n.s.	0.44 ± 0.6
Age class 1 hunted (<1 year)/age class 1 total	1	0.01	n.s.	0.44 ± 0.35
Age class 2 hunted (>1 year)/age class 2 total	1	0.2	n.s.	-0.79 ± 0.8
Area*Density-1	1	0.01	n.s.	0.07 ± 0.73
Area * % Male hunted	1	0.38	n.s.	0.37 ± 0.6
Area * % Female hunted	1	0.07	n.s.	-0.48 ± 1.78
Area * % Age class 1	1	3.02	n.s.	-0.92 ± 0.53
Area * % Age class 2	1	0.01	n.s.	0.23 ± 2.83

Note:

F, *p*-value and coefficients of the variables included in the Linear Model, to explain exponential growth rate. *df* show the degree of freedom of the numerator.

evidenced a decrease in population growth at high densities in both situations, whether artificial feeding was provided or not ($F = 30$, $p < 0.001$) (Table 3), while age and sex class specific extraction rates, as well as the interactions between area and the other parameters (including density) were not significant.

The linear regressions fitted to relate the exponential growth rate and population density in each population (Fig. 2) evidenced that both populations presented significant linear adjustments (LQ: $F = 13.15$, $p = 0.0017$; LM: $F = 33.62$, $p = 0.001$; $R^2 = 0.57$ and 0.39 , respectively) with similar slopes 0.72 Lm (CI [0.47–0.96]) and 0.65 LQ (CI [0.26–0.98]). In LM population, the test of statistical density dependence established K at 39.45 deer/km², while for LQ population it was 32.64 deer/km². These values are similar to the average densities occurring during the study period: 37.9 and 32.9 deer/km² for LM and LQ, respectively. Therefore, the range of I -carrying capacity assuming 50 of K value was between 19.73 deer/km² and 16.32 deer/km² for LM and LQ populations, respectively.

Figure 3 plots the harvested density and the proportion harvested for both populations, indicating as a reference their values at MSY (for $K_{50\%}$ according to our previous estimations of theoretical values). Table 2 shows the total number and Table 4 the proportion harvested in each population. The total number of animals hunted was slightly higher in relation to what was expected under an MSY assumption for both populations. In the case of the extraction rates, the real observed numbers were below the percentage of sustainable extraction for the whole study period, except at 2 years in the case of LM and at 4 years in LQ (Table 2).

Overall, an average of an extra 36 deer per year were hunted (0.52 deer annually hunted/km²) from LQ population compared with a sustainable MSY situation (345 individuals, 5.03 hunted/km²). This represents 10.4% more hunting bag compared to MSY. On the other hand, an extra 21.7 deer were hunted per year (2.5 hunted/km²) from LM population compared with a sustained MSY situation (58 individual, 6.68 hunted/km²), which

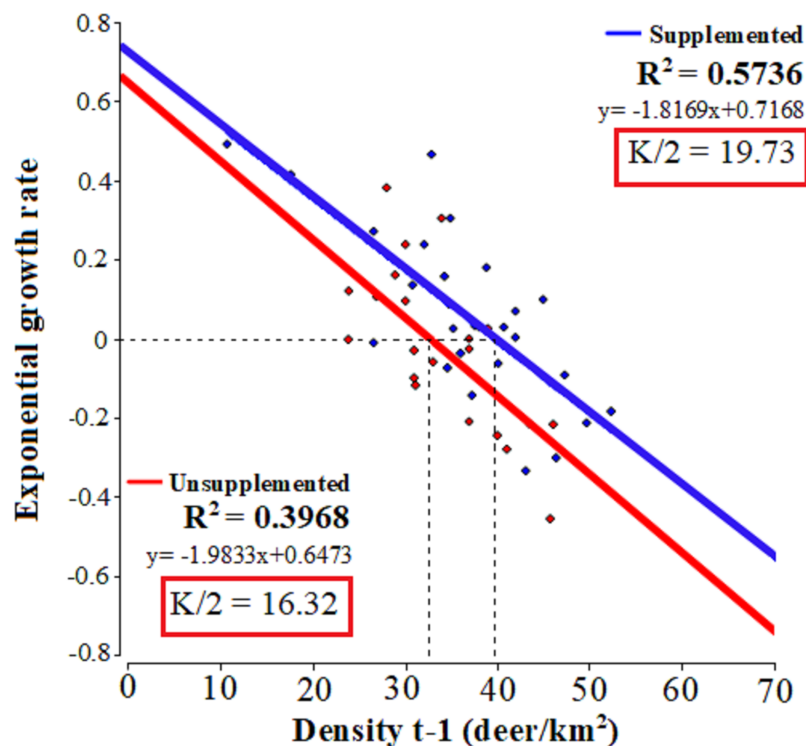


Figure 2 Tests of statistical density dependence. The tests of statistical density dependence derived from the logistic growth model, separately for each study population (supplemented = red and unsupplemented = blue). [Full-size !\[\]\(1663bb69f307a960345edb0e712f8c02_img.jpg\) DOI: 10.7717/peerj.10872/fig-2](https://doi.org/10.7717/peerj.10872/fig-2)

represents 37.4% more hunting bag compared to (artificial) MSY. During the total study period (27 years) 976 and 586 fewer deer would have been hunted under an MSY situation for LQ and LM respectively (see [Table 2](#)). In terms of average extraction rates, a 13.3% and 10.21% lower proportion of the population would have been extracted compared to the MSY situation in LQ and LM populations, respectively ([Table 4](#)). In other words, the extraction rate would be 1.75 and 1.43 times higher under an MSY situation, for LQ and LM populations, respectively.

DISCUSSION

We have shown using two high density red deer populations under contrasted management schemes, that is with and without artificial feeding that (i) the relative rate of increase per individual similarly decreases linearly (similar slopes) with population density (under the logistic equation). Therefore, density dependence is still and similarly evidenced when supplementary food is provided generously all the year round. However, equilibrium theoretical population density, N , is increased by the effects of supplemental feeding on population productivity (see [Rodríguez-Hidalgo et al. \(2010\)](#), [Yoccoz et al. \(2001\)](#) for small mammals), even when natural food availability or habitat quality was apparently lower ([Fig. 2](#)). Secondly (ii) the unsupplemented population provided reference values to implement sustainable management of red deer populations adaptively in our study region. Altogether (iii) this study reveals the importance of monitoring big-game

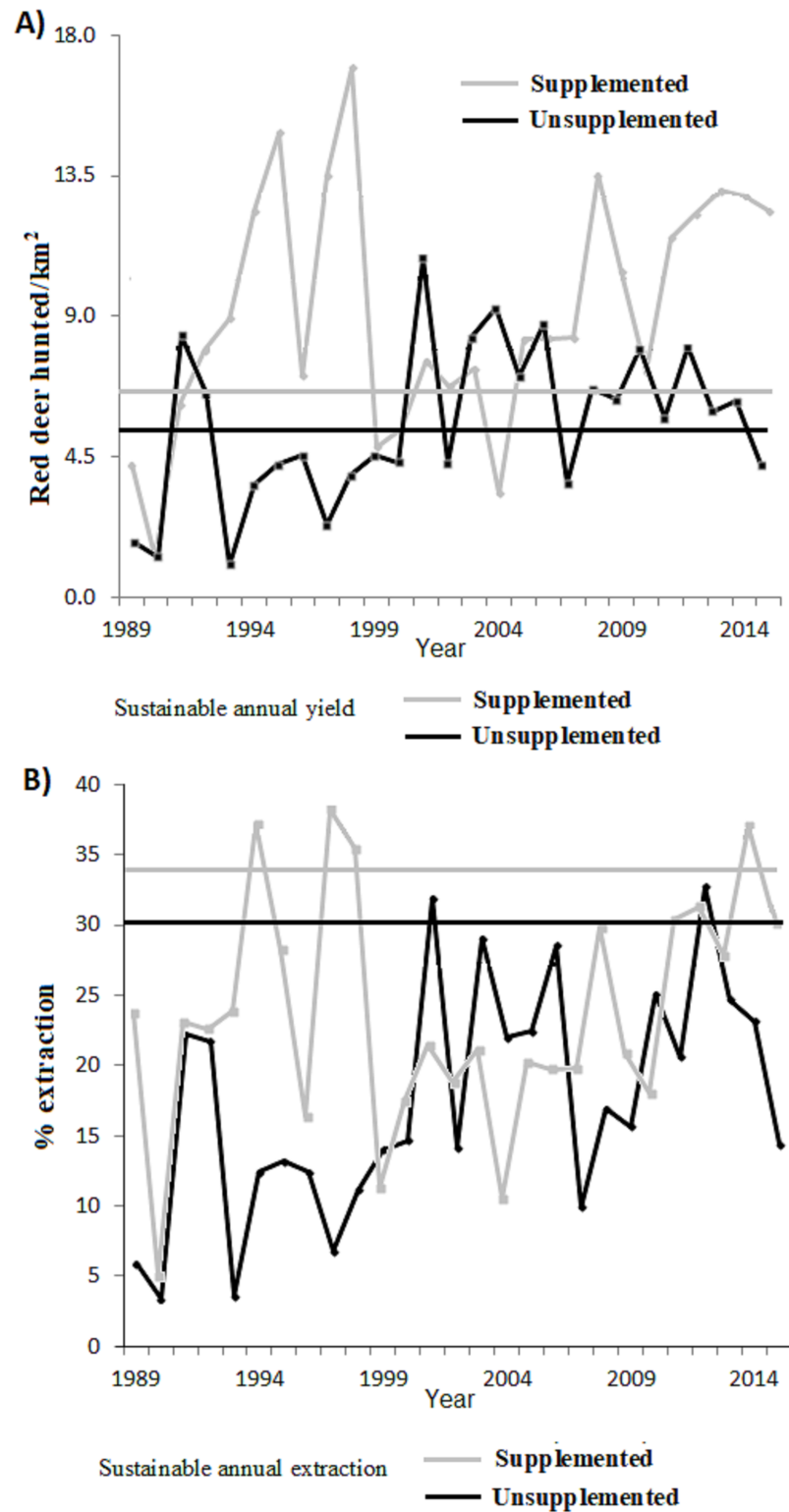


Figure 3 (A) Annual number of animals harvested depending on the surface area (n° ind/ km^2) and (B) proportion of extraction with respect to the total population for the supplemented (grey line) and unsupplemented estates (black line). For comparison, horizontal lines indicate the predicted value in a situation of MSYt (dashed lines). [Full-size !\[\]\(ba1b80118482ccef74a5d718ca4d7242_img.jpg\) DOI: 10.7717/peerj.10872/fig-3](https://doi.org/10.7717/peerj.10872/fig-3)

Table 4 Percentage of animals hunted from each population per year, theoretical maximum sustainable yield (MSYt), and differences between real percentages and those under the assumption of MSYt, separately for each management system or population (LQ, without supplemental feeding; LM, with supplemental feeding). MSYt values assume 5% natural mortality.

Year	LQ			LM		
	% Harvest	MSYt	Differences	% Harvest	MSYt	Differences
1989	6.1	30.74	-24.6	23.8	34.04	-10.2
1990	3.4		-27.3	4.7		-29.3
1991	22.2		-8.5	23.2		-10.8
1992	21.7		-9.1	22.7		-11.3
1993	3.6		-27.1	23.9		-10.1
1994	12.4		-18.3	37.6		3.6
1995	13.2		-17.5	28.4		-5.6
1996	12.4		-18.3	16.3		-17.7
1997	6.8		-23.9	38.6		4.6
1998	11.1		-19.6	35.8		1.8
1999	14.1		-16.6	11.2		-22.8
2000	14.7		-16.1	17.5		-16.5
2001	31.9		1.2	21.5		-12.5
2002	14.1		-16.6	18.8		-15.2
2003	29.1		-1.6	21.2		-12.8
2004	22.1		-8.6	10.3		-23.7
2005	22.5		-8.2	20.3		-13.7
2006	28.6		-2.1	19.8		-14.2
2007	9.9		-20.8	19.9		-14.1
2008	17.1		-13.6	30.1		-3.9
2009	15.7		-15.1	20.9		-13.1
2010	25.1		-5.6	18.1		-15.9
2011	20.6		-10.1	30.7		-3.3
2012	32.7		1.9	31.6		-2.4
2013	24.7		-6.1	28.1		-5.9
2014	23.1		-7.6	37.5		3.5
2015	14.4		-16.3	31.1		-2.9
Annual mean	17.5	30.74	-13.31	23.8	34.04	-10.2

population dynamics from a long-term perspective, allowing the incorporation of adaptive management to decision taking. In this case, according to [Williams \(2011\)](#), adaptive management is defined as a learning-based process involving the fundamental features of learning (monitoring of red deer population dynamics through time) and adaptation (the adjustment of management (e.g. harvest) through time based on this learning). Current management schemes of big game in Europe normally lack proactive policies based on the understanding of population dynamics ([Vicente et al., 2019](#)), which is essential to make ecological and socio-economic aspects compatible when exploiting the

resource. Long-term hunting strategies that are not proactive may lead to high population densities and undesirable overabundance situations, causing adverse effects on the population itself as well as on other species and even on the economy as the use of the resource may become unsustainable (Carpio, Apollonio & Acevedo, 2021; Valente et al., 2020).

Density dependence and management

The average deer densities of the study populations might be considered high in the context of the values described in the international scientific literature, where large range of values exist for this plastic species even locally (Apollonio, Andersen & Putman, 2010), for example 3 deer/km² in Sweden (Jarnemo, 2008), 3.7 deer/km² in Norway (Myrsterud et al., 2007), 8.1 deer/km² in Scotland (Pérez-Barbería, Hooper & Gordon, 2013) or 9.6 deer/km² in the Czech Republic (Prokesová, Barancekova & HoMolka, 2006). Although, Buckland et al. (1996) showed densities between 20 and 34 deer km² in Scottish red deer populations. It should be remembered that Central European literature generally considers that much lower densities than those described here (e.g. densities above 4 deer/km²) are not compatible with other activities of agricultural and forestry production and may have adverse effects on the conservation of the natural environment (Gill, 1992). Similar high ranges of densities have been found in other studies in Mediterranean ecosystems and areas with a temperate climate, for example up to 40 deer/km² in Portugal (Silva et al., 2014), >30 deer/km² in other areas of Spain (Perea, Girardello & San Miguel, 2014) or 26 deer/km² in Italy (Casula et al., 2009), 20–34 deer/km² in Scotland (Buckland et al., 1996). These values indicate that the carrying capacity of red deer in Mediterranean and temperate oceanic environments may present relatively high values, compared to northern or continental latitudes. Climatic conditions and the quality of the food available (e.g. Real Bioclimatic Index, Martínez-Jaúregui et al., 2009) are adverse in the summer in Southern Europe due to drought (with a second minimum in winter), showing significant interannual variability. However, the vegetation productivity curve in our study latitudes varies little over the year due to the presence of evergreen trees and shrub species (Gazol et al., 2018), which contrasts with the Northern and Central latitudes of Europe, where hard winter conditions limit winter survival, determining lower average carrying capacities (Martínez-Jaúregui et al., 2009). However, NDVI varies considerably among plant species, droughts, and the location of the studied forests (Gazol et al., 2018). These authors also indicated that NDVI data are less sensitive metrics of forest resilience to drought than other metrics as TRWi (absolutely dated ring-width indices).

The relative rate of increase per individual decreased linearly with population density in both study populations. However, equilibrium population density, K , is increased by supplemental feeding. This happened even when natural conditions or habitat quality apparently was lower in the supplemented population (Milner et al., 2014). López-Montoya, Moro & Azorit (2017) detected that density-dependence may have a stronger effect on growth than hunting or climatic conditions in populations which are closer to carrying capacity (these aspects are being addressed for these two populations in a separate article). A high population density experienced early in life may cause a reduction in

subsequent development, thus affecting antlers size over time (Torres-Porras, Carranza & Perez-Gonzalez, 2009; Pérez et al., 2011), which may be detrimental in terms of the objectives of hunting. Miranda et al. (2015) showed that supplemental feeding provided to ungulates in LM led to increased browsing on plant species whose nutritional composition complemented that of the supplement provided. In our study populations, Acevedo et al. (2008) reported high levels of browsing in both study sites (0.95 and 0.86 browsing indexes for highly palatable species, and 0.85 and 0.83 browsing indexes for species with reduced palatability, in LQ and LM populations, respectively), which are high according to previous studies (Morellet et al., 2001). In addition, aggregation at feeders may increase disease transmission (Barasona et al., 2017). Vicente et al. (2007) showed that supplemental feeding increases the body condition at the cost of increased host contact rates, which implied an ecological trade-off between acquiring resources and the concurrent exposure to mycobacterias (the causative agent of animal tuberculosis, in this case). Understanding these long-term complex links represents an important contribution to the planning and prioritising of population management actions.

We also verify that the neither the population growth rate nor its negative relationship with population density in both study populations was affected or mediated by the rates of harvesting different age and sex classes. This maybe result of the hunting strategies implemented in the study sites, where not specific plans intended population reduction by targeting specific sex by age classes.

Harvest rates and proactive sustainable management

The high average densities (close to theoretical K values) only yielded 10.4% more hunting bag compared to the MSY in LQ population (this population can be considered as a reference for the natural carrying capacity in our study area). However, the disproportional increase in deer density to achieve such a limited hunting bag increase may in turn lead to negative impacts (see above). As for LM population, the hunting strategy yielded 30.4% more hunting bag compared to MSY due to very high densities (which peaked at up to 50 deer/km²) reached in a sub-optimal habitat for red deer. Therefore, this population cannot be considered a reference of natural circumstances. Theoretically, in LQ population, a density of 16.3 deer/km² may allow extraction rates of up to 30.3% (MSY); however, the actual extraction rate (17.5%) is well below the MSY threshold. Previous studies (such as DeCalesta (2017) or Mihalik (2016)) showed similar situations in wild ungulate populations where the extraction rate is below the sustainable rate under high density situations, and where an increased effort in the harvest rate reduced deer density, thus reducing impacts on ecosystems, while improving deer health and hunter satisfaction (Ueno, Kaji & Saitoh, 2010), although this depends on hunter's preferences (e.g. trophy, shoots, meat; see Heberlein, 2002).

Our harvest rates compare with the range described by previous authors (Kiffner et al., 2008; Saint-Andrieux et al., 2009; Apollonio, Andersen & Putman, 2010; Martínez & Martín, 2017). They respond to local situations in space, time and management (Milner et al., 2006); however, we evidenced that the significant changes in harvest rates were a

consequence of reactive decision taking. *Buckland et al. (1996)* suggest that the female (hind) cull should be restricted to non-lactating adult (yeld) and immature hinds, reducing hind numbers so that there are just two hinds of age >1 for every stag of age >6 in the population, provided that the population is maintained well below the carrying capacity (roughly estimated at 1,400 deer for LQ; *Millas-Prendergast & Martín-Fernández, 2015*), which approaches the situation we described for LQ population ($K/2$ population was estimated at about 1,268 deer). Proactive adaptive hunting management can maintain population levels within an optimum range, maximising the balance between forage resources and population productivity (*Pérez-González et al., 2010; Rodríguez-Hidalgo et al., 2010; Herruzo & Martínez-Jauregui, 2013; Herruzo et al., 2016*); that is when the population is at the optimal level, growth is high, and deer will be large (*McCullough, 1979*). For example *Santín-Durán et al. (2004)* showed a positive relationship between the intensity of parasite infections and population density of red deer in LQ, and *Gómez et al. (2001)*, who showed the impact of red deer on vegetation, also recommended limiting the deer population in LQ. In this population, previous studies found that density was the most important factor explaining the variation in conception dates, with greater densities causing later conception dates (*Peláez et al., 2017*), as well as having a negative effect on antler quality (*Peláez et al., 2018*). In the same way, *Santos et al. (2018)* found a negative density-dependent response of deer body reserves when considering the combined effects of population density and dietary quality, especially in populations without a supplementary feeding regime (as in LQ). *Perea, Girardello & San Miguel (2014)* showed that some plant species were highly preferred and were not to be found in the areas where the deer were present in great densities (>30 ind/km²) for a long period of time (for example LM).

Priorities for managing hunted red deer populations in Mediterranean areas

Density-mediated factors determined the population growth in these two situations of high red deer densities in a Mediterranean habitat, even when artificial feeding was provided. Our research has shown that, in these particular situations, an increase in the extraction rates (as is already happening in LQ) is needed.

Management implications

The extraction rates reported here can be considered as indicative (rather than reference) values for the two prevalent hunting management regimes in the south-central Iberian Peninsula. Hunting plans must be based adaptively on population monitoring, thereby proactively preventing resource damage. For these purposes, a simple initial approach can be to fix sustainable hunting rates to mitigate the impacts of deer browsing. We must promote awareness of the problem among policy makers and managers, but also develop and apply available population monitoring tools, to be applied in proactive management plans, with active surveillance and the early detection of the consequences of overabundance. Adaptive management involves assessing the effectiveness of management actions in relation to the plan's goals and objectives (*Lyons et al., 2008*).

ACKNOWLEDGEMENTS

We would like to thank Jon Nesbit for his help in revising the English version.

ADDITIONAL INFORMATION AND DECLARATIONS

Funding

Antonio J. Carpio is supported by a 'Juan de la Cierva' contract (FJCI-2017-33114) from UCLM, José A. Barasona is supported by a 'Juan de la Cierva' contract (FJCI-2015-23643) from MINECO and Pelayo Acevedo is supported by MINECO-UCLM through the 'Ramón y Cajal' contract (RYC-2012-11970) and project AGL2016- 76358-R grant (MINECO-FEDER, UE). Support for the publication fee was provided by the CSIC Open Access Publication Support Initiative through its Unit of Information Resources for Research (URICI). The funders had no role in study design, data collection and analysis, decision to publish, or preparation of the manuscript.

Grant Disclosures

The following grant information was disclosed by the authors:

UCLM: FJCI-2017-33114.

MINECO: FJCI-2015-23643.

MINECO-UCLM: RYC-2012-11970.

MINECO-FEDER, UE: AGL2016- 76358-R.

CSIC Open Access Publication.

Competing Interests

Yolanda Fierro is the owner of Yolfi Properties S.L. The authors declare that they have no competing interests.

Author Contributions

- Antonio José Carpio Camargo conceived and designed the experiments, analysed the data, prepared figures and/or tables, authored or reviewed drafts of the paper, and approved the final draft.
- Jose Barasona analysed the data, authored or reviewed drafts of the paper, and approved the final draft.
- Pelayo Acevedo analysed the data, authored or reviewed drafts of the paper, and approved the final draft.
- Yolanda Fierro performed the experiments, authored or reviewed drafts of the paper, and approved the final draft.
- Christian Gortazar conceived and designed the experiments, authored or reviewed drafts of the paper, and approved the final draft.
- Carlos Vigal performed the experiments, authored or reviewed drafts of the paper, and approved the final draft.
- Ángel Moreno performed the experiments, authored or reviewed drafts of the paper, and approved the final draft.

- Joaquin Vicente conceived and designed the experiments, analysed the data, prepared figures and/or tables, authored or reviewed drafts of the paper, and approved the final draft.

Data Availability

The following information was supplied regarding data availability:

Data is available in [Tables 2](#) and [3](#) and the [Supplemental Files](#).

Supplemental Information

Supplemental information for this article can be found online at <http://dx.doi.org/10.7717/peerj.10872#supplemental-information>.

REFERENCES

- Acevedo P, Ruiz-Fons F, Vicente J, Reyes-Garcia AR, Alzaga V, Gortázar C. 2008.** Estimating red deer abundance in a wide range of management situations in Mediterranean habitats. *Journal of Zoology* **276**(1):37–47 DOI [10.1111/j.1469-7998.2008.00464.x](https://doi.org/10.1111/j.1469-7998.2008.00464.x).
- Acevedo P, Cassinello J. 2009.** Human-induced range expansion of wild ungulates causes niche overlap between previously allopatric species: red deer and Iberian ibex in mountainous regions of southern Spain. *Annales Zoologici Fennici* **46**(1):39–50 DOI [10.5735/086.046.0105](https://doi.org/10.5735/086.046.0105).
- Apollonio M, Andersen R, Putman R. 2010.** *European ungulates and their management in the 21st century*. Cambridge: Cambridge University Press.
- Barasona JA, Vicente J, Díez-Delgado I, Aznar J, Gortázar C, Torres MJ. 2017.** Environmental presence of Mycobacterium tuberculosis complex in aggregation points at the wildlife/livestock interface. *Transboundary and Emerging Diseases* **64**(4):1148–1158 DOI [10.1111/tbed.12480](https://doi.org/10.1111/tbed.12480).
- Benton TG, Grant A, Clutton-Brock TH. 1995.** Does environmental stochasticity matter? Analysis of red deer life-histories on rum. *Evolutionary Ecology* **9**(6):559–574 DOI [10.1007/BF01237655](https://doi.org/10.1007/BF01237655).
- Borowik T, Wawrzyniak P, Jędrzejewska B. 2016.** Red deer (*Cervus elaphus*) fertility and survival of young in a low-density population subject to predation and hunting. *Journal of Mammalogy* **97**(6):1671–1681 DOI [10.1093/jmammal/gyw133](https://doi.org/10.1093/jmammal/gyw133).
- Buckland ST, Ahmadi S, Staines BW, Gordon IJ, Youngson RW. 1996.** Estimating the minimum population size that allows a given annual number of mature red deer stags to be culled sustainably. *Journal of Applied Ecology* **33**(1):118–130 DOI [10.2307/2405021](https://doi.org/10.2307/2405021).
- Buckland ST, Anderson DR, Burnham KP, Laake JL, Borchers DL, Thomas L. 2004.** *Introduction to distance sampling: estimating abundance of biological population*. Oxford: Oxford University Press.
- Carpenter LH, Decker DJ, Lipscomb JF. 2000.** Stakeholder acceptance capacity in wildlife management. *Human Dimensions of Wildlife* **5**(3):5–19 DOI [10.1080/10871200009359184](https://doi.org/10.1080/10871200009359184).
- Carpio AJ, Guerrero-Casado J, Ruiz-Aizpurua L, Vicente J, Tortosa FS. 2014a.** The high abundance of wild ungulates in a Mediterranean region: is this compatible with the European rabbit? *Wildlife Biology* **20**(3):161–167 DOI [10.2981/wlb.13113](https://doi.org/10.2981/wlb.13113).
- Carpio AJ, Castro-López J, Guerrero-Casado J, Ruiz-Aizpurua L, Vicente J, Tortosa FS. 2014b.** Effect of wild ungulate density on invertebrates in a Mediterranean ecosystem. *Animal Biodiversity and Conservation* **37**(2):115–125 DOI [10.32800/abc.2014.37.0115](https://doi.org/10.32800/abc.2014.37.0115).

- Carpio AJ, Guerrero-Casado J, Barasona JA, Tortosa FS, Vicente J, Hillström L, Delibes-Mateos M. 2017.** Hunting as a source of alien species: a European review. *Biological Invasions* 19(4):1197–1211 DOI 10.1007/s10530-016-1313-0.
- Carpio AJ, Apollonio M, Acevedo P. 2021.** Wild ungulate overabundance in Europe: contexts, causes, monitoring and management recommendations. *Mammal Review* 51(1):95–108.
- Carranza J. 2010.** Ungulates and their management in Spain. In: Apollonio M, Andersen R, Putman R, eds. *Ungulate Management in Europe in the XXI century*. Cambridge: Cambridge University Press, 419–440.
- Casula P, Masci A, Mandas L, Fleba L, Secci D, Murgia A. 2009.** *Cost-benefit analysis of red deer conservation in Sardinia*. Buenos Aires: XIII World Forestry Congress, 1–11.
- Caughley G. 1979.** What is this thing called carrying capacity? In: Boyce MS, Hayden-Wing LD, eds. *North American Elk: Ecology, Behavior, and Management*. Laramie: University of Wyoming Press, 2–8.
- Chapman EJ, Byron CJ. 2018.** The flexible application of carrying capacity in ecology. *Global Ecology and Conservation* 13:e00365 DOI 10.1016/j.gecco.2017.e00365.
- Clutton-Brock TH, Coulson TN, Milner-Gulland EJ, Thomson D, Armstrong HM. 2002.** Sex differences in emigration and mortality affect optimal management of deer populations. *Nature* 415(6872):633–637 DOI 10.1038/415633a.
- DeCalesta DS. 2017.** Achieving and maintaining sustainable white-tailed deer density with adaptive management. *Human–Wildlife Interactions* 11(1):99–111 DOI 10.26077/cyh7-1288.
- DeCalesta DS, Eckley MC. 2019.** *Deer management for forest landowners and managers*. Boca Raton: CRC Press.
- Fierro Y, Gortazar C, Landete-Castillejos T, Vicente J, García A, Gallego L. 2002.** Baseline values for cast antlers of Iberian red deer (*Cervus elaphus hispanicus*). *Zeitschrift für Jagdwissenschaft* 48(4):244–251 DOI 10.1007/BF02189695.
- Gaillard JM, Festa-Bianchet M, Yoccoz NG. 1998.** Population dynamics of large herbivores: variable recruitment with constant adult survival. *Trends in Ecology & Evolution* 13(2):58–63 DOI 10.1016/S0169-5347(97)01237-8.
- Gazol A, Camarero JJ, Sangüesa-Barreda G, Vicente-Serrano SM. 2018.** Post-drought resilience after forest die-off: shifts in regeneration, composition, growth and productivity. *Frontiers in Plant Science* 9:1546.
- Gill RMA. 1992.** A Review of damage by mammals in north temperate forests: 1. Deer. *Forestry* 65(2):145–169 DOI 10.1093/forestry/65.2.145.
- Gortázar C, Acevedo P, Ruiz-Fons F, Vicente J. 2006.** Disease risks and overabundance of game species. *European Journal of Wildlife Research* 52(2):81–87 DOI 10.1007/s10344-005-0022-2.
- Gómez AM, Vigal CR, Gotor PF, De las Heras Ibáñez J. 2001.** Impact of red deer fraying (*Cervus elaphus* L.) on cornicabra (*Pistacia terebinthus* L.) in «Quintos de Mora» (Los Yébenes, Toledo, Spain). *Forest Systems* 10(1):81–94 DOI 10.5424/713.
- Hamel S, Côté SD, Festa-Bianchet M. 2010.** Maternal characteristics and environment affect the costs of reproduction in female mountain goats. *Ecology* 91(7):2034–2043 DOI 10.1890/09-1311.1.
- Hebblewhite M, Pletscher DH, Paquet PC. 2002.** Elk population dynamics in areas with and without predation by recolonizing wolves in Banff National Park, Alberta. *Canadian Journal of Zoology* 80(5):789–799 DOI 10.1139/z02-058.
- Heberlein TA. 2002.** Peer-reviewed articles too many hunters or not enough deer? Human and biological determinants of hunter satisfaction and quality. *Human Dimensions of Wildlife* 7(4):229–250 DOI 10.1080/10871200214753.

- Herruzo AC, Martínez-Jauregui M. 2013.** Trends in hunters, hunting grounds and big game harvest in Spain. *Forest Systems* **22**(1):114–122 DOI [10.5424/fs/2013221-03371](https://doi.org/10.5424/fs/2013221-03371).
- Herruzo AC, Martínez-Jauregui M, Carranza J, Campos P. 2016.** Commercial income and capital of hunting: an application to forest estates in Andalucía. *Forest Policy and Economics* **69**(3):53–61 DOI [10.1016/j.forpol.2016.05.004](https://doi.org/10.1016/j.forpol.2016.05.004).
- Jarnemo A. 2008.** Seasonal migration of male red deer (*Cervus elaphus*) in southern Sweden and consequences for management. *European Journal of Wildlife Research* **54**(2):327–333 DOI [10.1007/s10344-007-0154-7](https://doi.org/10.1007/s10344-007-0154-7).
- Jensen AL. 1996.** Density-dependent matrix yield equation for optimal harvest of age-structured wildlife populations. *Ecological Modelling* **88**(1–3):125–132 DOI [10.1016/0304-3800\(95\)00075-5](https://doi.org/10.1016/0304-3800(95)00075-5).
- Kaji K, Saitoh T, Uno H, Matsuda H, Yamamura K. 2010.** Adaptive management of sika deer populations in Hokkaido, Japan: theory and practice. *Population Ecology* **52**(3):373–387 DOI [10.1007/s10144-010-0219-4](https://doi.org/10.1007/s10144-010-0219-4).
- Kapota D, Saltz D. 2018.** Unequal density dependence between survival and recruitment affects harvesting effectiveness. *Journal of Wildlife Management* **82**(8):1756–1766 DOI [10.1002/jwmg.21509](https://doi.org/10.1002/jwmg.21509).
- Kiffner C, Rossiger E, Trisl O, Schulz R, Rühle F. 2008.** Probability of recent bark stripping damage by red deer (*Cervus elaphus*) on Norway spruce (*Picea abies*) in a low mountain range in Germany—a preliminary analysis. *Silva Fennica* **42**(1):125–134 DOI [10.14214/sf.269](https://doi.org/10.14214/sf.269).
- Landete-Castillejos T, Gortázar C, Vicente J, Fierro Y, Garcia A, Gallego L. 2004.** Age-related foetal sex ratio bias in Iberian red deer (*Cervus elaphus hispanicus*): are male calves too expensive for growing mothers? *Behavioral Ecology and Sociobiology* **56**(1):1–8 DOI [10.1007/s00265-004-0764-y](https://doi.org/10.1007/s00265-004-0764-y).
- Lebreton JD, Gimenez O. 2013.** Detecting and estimating density dependence in wildlife populations. *Journal of Wildlife Management* **77**(1):12–23 DOI [10.1002/jwmg.425](https://doi.org/10.1002/jwmg.425).
- López-Montoya AJ, Moro J, Azorit C. 2017.** Drivers of population growth variations for two mediterranean sympatric Deer. *Ecological Research* **32**(5):703–712.
- Lyons JE, Runge MC, Laskowski HP, Kendall WL. 2008.** Monitoring in the context of structured decision-making and adaptive management. *Journal of Wildlife Management* **72**(8):1683–1692 DOI [10.2193/2008-141](https://doi.org/10.2193/2008-141).
- MacNab J. 1985.** Carrying capacity and related slippery shibboleths. *Wildlife Society Bulletin* **13**(4):403–410.
- Mandujano S. 2007.** Carrying capacity and potential production of ungulates for human use in a Mexican tropical dry forest. *Biotropica* **39**(4):519–524 DOI [10.1111/j.1744-7429.2007.00305.x](https://doi.org/10.1111/j.1744-7429.2007.00305.x).
- Martínez-Jauregui M, San Miguel_Ayaz A, Mysterud A, Rodríguez-Vigal C, Clutton-Brock T, Langvatn R, Coulson T. 2009.** Are local weather, NDVI and NAO consistent determinants of red deer weight across three contrasting European countries? *Global Change Biology* **15**(7):1727–1738 DOI [10.1111/j.1365-2486.2008.01778.x](https://doi.org/10.1111/j.1365-2486.2008.01778.x).
- Martínez-Jauregui M, Herruzo AC. 2014.** A note on the effectiveness of incorporating management objectives with ecological variables when modeling red deer abundance. *European Journal of Wildlife Research* **60**(3):511–517 DOI [10.1007/s10344-014-0813-4](https://doi.org/10.1007/s10344-014-0813-4).
- Martínez-Jauregui M, Delibes-Mateos M, Arroyo B, Soliño M. 2020.** Addressing social attitudes toward lethal control of wildlife in national parks. *Conservation Biology* **34**(4):868–878 DOI [10.1111/cobi.13468](https://doi.org/10.1111/cobi.13468).

- Martínez Á, Martín ÁJ. 2017.** A matrix system using quality classes can be applied for managing sustainable wild ungulates populations: Convergence below optimum capacity. *Ecological Engineering* **108(2)**:10–16 DOI [10.1016/j.ecoleng.2017.07.043](https://doi.org/10.1016/j.ecoleng.2017.07.043).
- McCullough DR. 1979.** *The George Reserve deer herd: population ecology of a K-selected species* (p. 271). Ann Arbor: University of Michigan Press.
- McCullough DR. 1992.** Concepts of large herbivore population dynamics. In: McCullough DR, Barrett RH, eds. *Wildlife 2001: Populations*. Dordrecht: Springer, 967–984.
- Mihalik B. 2016.** Maximal sustainable harvesting, as a method of raising the wildlife management's incomes. *Journal of Agriculture and Rural Development in the Tropics and Subtropics* **5(1–2)**:38–43.
- Millas-Prendergast FN, Martín-Fernández ÁJ. 2015.** *Aplicación de un modelo cuantitativo para garantizar la sostenibilidad en la ordenación cinegética del ciervo (Cervus elaphus L.) en Los Quintos de Mora (Toledo)*. Madrid: F. Navarro Millas-Prendergast.
- Milner JM, Bonenfant C, Mysterud A, Gaillard JM, Csányi S, Stenseth NC. 2006.** Temporal and spatial development of red deer harvesting in Europe: biological and cultural factors. *Journal of Applied Ecology* **43(4)**:721–734 DOI [10.1111/j.1365-2664.2006.01183.x](https://doi.org/10.1111/j.1365-2664.2006.01183.x).
- Milner JM, Van Beest FM, Schmidt KT, Brook RK, Storaas T. 2014.** To feed or not to feed? Evidence of the intended and unintended effects of feeding wild ungulates. *Journal of Wildlife Management* **78(8)**:1322–1334 DOI [10.1002/jwmg.798](https://doi.org/10.1002/jwmg.798).
- Miranda M, Cristóbal I, Díaz L, Sicilia M, Molina-Alcaide E, Bartolomé J, Fierro Y, Cassinello J. 2015.** Ecological effects of game management: does supplemental feeding affect herbivory pressure on native vegetation? *Wildlife Research* **42(4)**:353–361 DOI [10.1071/WR15025](https://doi.org/10.1071/WR15025).
- Morellet N, Champely S, Gaillard JM, Ballon P, Boscardin Y. 2001.** The browsing index: new tool uses browsing pressure to monitor deer populations. *Wildlife Society Bulletin* **29(4)**:1243–1252.
- Mysterud A, Meisingset EL, Veiberg V, Langvatn R, Solberg EJ, Loe LE, Stenseth NC. 2007.** Monitoring population size of red deer *Cervus elaphus*: an evaluation of two types of census data from Norway. *Wildlife Biology* **13(3)**:285–299 DOI [10.2981/0909-6396\(2007\)13\[285:MPSORD\]2.0.CO;2](https://doi.org/10.2981/0909-6396(2007)13[285:MPSORD]2.0.CO;2).
- Mysterud A. 2010.** Still walking on the wild side? Management actions as steps towards 'semi-domestication' of hunted ungulates. *Journal of Applied Ecology* **47(4)**:920–925 DOI [10.1111/j.1365-2664.2010.01836.x](https://doi.org/10.1111/j.1365-2664.2010.01836.x).
- Perea R, Girardello M, San Miguel A. 2014.** Big game or big loss? High deer densities are threatening woody plant diversity and vegetation dynamics. *Biodiversity and Conservation* **23(5)**:1303–1318 DOI [10.1007/s10531-014-0666-x](https://doi.org/10.1007/s10531-014-0666-x).
- Peláez M, San Miguel A, Rodríguez-Vigal C, Perea R. 2017.** Climate, female traits and population features as drivers of breeding timing in Mediterranean red deer populations. *Integrative Zoology* **12(5)**:396–408 DOI [10.1111/1749-4877.12252](https://doi.org/10.1111/1749-4877.12252).
- Peláez M, Perea R, Díaz M, San Miguel A, Rodríguez-Vigal C, Côté SD. 2018.** Use of cast antlers to assess antler size variation in red deer populations: effects of mast seeding, climate and population features in Mediterranean environments. *Journal of Zoology* **306(1)**:8–15 DOI [10.1111/jzo.12563](https://doi.org/10.1111/jzo.12563).
- Pérez JM, Serrano E, González-Candela M, León-Vizcaino L, Barbera GG, De Simón MA, Fandos P, Granados Jé E, Soriguer Rón C, Festa-Bianchet M. 2011.** Reduced horn size in two wild trophy-hunted species of Caprinae. *Wildlife Biology* **17(1)**:102–112 DOI [10.2981/09-102](https://doi.org/10.2981/09-102).
- Pérez-Barbería FJ, Hooper RJ, Gordon IJ. 2013.** Long-term density-dependent changes in habitat selection in red deer (*Cervus elaphus*). *Oecologia* **173(3)**:837–847 DOI [10.1007/s00442-013-2686-8](https://doi.org/10.1007/s00442-013-2686-8).

- Pérez-González J, Barbosa AM, Carranza J, Torres-Porras J. 2010.** Relative effect of food supplementation and natural resources on female red deer distribution in a Mediterranean ecosystem. *Journal of Wildlife Management* 74(8):1701–1708 DOI 10.2193/2009-130.
- Prokesová J, Barancekova M, HoMolka M. 2006.** Density of red and roe deer and their distribution in relation to different habitat characteristics in a floodplain forest. *Folia Zoologica* 55(1):1–14.
- Putman R, Apollonio M, Andersen R. 2011.** *Ungulate management in Europe: problems and practices*. Cambridge: Cambridge University Press.
- Reynolds JD, Freckleton RP. 2005.** Population dynamics: growing to extremes. *Science* 309(5734):567–568 DOI 10.1126/science.1116268.
- Rodriguez-Hidalgo P, Gortázar C, Tortosa FS, Rodriguez-Vigal C, Fierro Y, Vicente J. 2010.** Effects of density, climate, and supplementary forage on body mass and pregnancy rates of female red deer in Spain. *Oecologia* 164(2):389–398 DOI 10.1007/s00442-010-1663-8.
- Santos JP, Vicente J, Carvalho J, Queiros J, Villamuelas M, Albanell E, Acevedo P, Gortazar C, Lopez-Olvera JR, Fonseca C. 2018.** Determining changes in the nutritional condition of red deer in Mediterranean ecosystems: Effects of environmental, management and demographic factors. *Ecological Indicators* 87:261–271.
- Sæther BE. 1997.** Environmental stochasticity and population dynamics of large herbivores: a search for mechanisms. *Trends in Ecology & Evolution* 12(4):143–149 DOI 10.1016/S0169-5347(96)10068-9.
- Saint-Andrieux C, Bonenfant C, Toïgo C, Basille M, Klein F. 2009.** Factors affecting beech *Fagus sylvatica* bark stripping by red deer *Cervus elaphus* in a mixed forest. *Wildlife Biology* 15(2):187–197 DOI 10.2981/07-100.
- Santín-Durán M, Alunda JM, Hoberg EP, De la Fuente C. 2004.** Abomasal parasites in wild sympatric cervids, red deer, *Cervus elaphus* and fallow deer, *Dama dama*, from three localities across central and western Spain: relationship to host density and park management. *Journal of Parasitology* 90(6):1378–1387 DOI 10.1645/GE-3376.
- Schoener TW. 1973.** Population growth regulated by intraspecific competition for energy or time: some simple representations. *Theoretical Population Biology* 4(1):56–84 DOI 10.1016/0040-5809(73)90006-3.
- Silva JS, Catry FX, Moreira F, Lopes T, Forte T, Bugalho MN. 2014.** Effects of deer on the post-fire recovery of a Mediterranean plant community in Central Portugal. *Journal of Forest Research* 19(2):276–284 DOI 10.1007/s10310-013-0415-0.
- Skonhøft A, Veiberg V, Gauteplass A, Olaussen JO, Meisingset EL, Mysterud A. 2013.** Balancing income and cost in red deer management. *Journal of Environmental Management* 115:179–188 DOI 10.1016/j.jenvman.2012.11.006.
- Stephens PA, Sutherland WJ. 1999.** Consequences of the Allee effect for behaviour, ecology and conservation. *Trends in Ecology & Evolution* 14(10):401–405 DOI 10.1016/S0169-5347(99)01684-5.
- Thomas L, Buckland ST, Røstad EA, Laake JL, Strindberg S, Hedley SL. 2010.** Distance software: design and analysis of distance sampling surveys for estimating population size. *Journal of Applied Ecology* 47(1):5–14 DOI 10.1111/j.1365-2664.2009.01737.x.
- Torres-Porras J, Carranza J, Perez-Gonzalez J. 2009.** Combined effects of drought and density on body and antler size of male Iberian red deer *Cervus elaphus hispanicus*: climate change implications. *Wildlife Biology* 15(2):213–222 DOI 10.2981/08-059.

- Trenkel VM. 2001.** Exploring red deer culling strategies using a population-specific calibrated management model. *Journal of Environmental Management* **62**(1):37–53
DOI [10.1006/jema.2001.0418](https://doi.org/10.1006/jema.2001.0418).
- Ueno M, Kaji K, Saitoh T. 2010.** Culling versus density effects in management of a deer population. *Journal of Wildlife Management* **74**(7):1472–1483
DOI [10.1111/j.1937-2817.2010.tb01274.x](https://doi.org/10.1111/j.1937-2817.2010.tb01274.x).
- Valente AM, Acevedo P, Figueiredo AM, Fonseca C, Torres RT. 2020.** Overabundant wild ungulate populations in Europe: management with consideration of socio-ecological consequences. *Mammal Review* **50**(4):353–366.
- VerCauteren KC, Anderson CW, Van Deelen TR, Drake D, Walter WD, Vantassel SM, Hygnstrom SE. 2011.** Regulated commercial harvest to manage overabundant white-tailed deer: An idea to consider? *Wildlife Society Bulletin* **35**(3):185–194 DOI [10.1002/wsb.36](https://doi.org/10.1002/wsb.36).
- Vicente J, Höfle U, Fernández-De-Mera IG, Gortázar C. 2007.** The importance of parasite life history and host density in predicting the impact of infections in red deer. *Oecologia* **152**(4):655–664 DOI [10.1007/s00442-007-0690-6](https://doi.org/10.1007/s00442-007-0690-6).
- Vicente J, Apollonio M, Blanco-Aguilar JA, Borowik T, Brivio F, Casaer J, Croft S, Ericsson G, Ferroglio E, Gavier-Widen D, Gortázar C, Jansen PA, Keuling O, Kowalczyk R, Petrovic K, Plhal R, Podgórski T, Sange M, Scandura M, Schmidt K, Smith GC, Soriguer R, Thulke H-H, Zanet S, Acevedo P. 2019.** Science-based wildlife disease response. *Science* **364**(6444):943–944 DOI [10.1126/science.aax4310](https://doi.org/10.1126/science.aax4310).
- Vingada J, Fonseca C, Cancela J, Ferreira J, Eira C. 2010.** Ungulates and their management in Portugal. In: Apollonio M, Andersen R, Putman R, eds. *Ungulate management in Europe in the XXI Century*. Cambridge: Cambridge University Press, 392–418.
- Williams BK. 2011.** Adaptive management of natural resources—framework and issues. *Journal of Environmental Management* **92**(5):1346–1353 DOI [10.1016/j.jenvman.2010.10.041](https://doi.org/10.1016/j.jenvman.2010.10.041).
- Wolda H, Dennis B. 1993.** Density dependence tests, are they? *Oecologia* **95**(4):581–591 DOI [10.1007/BF00317444](https://doi.org/10.1007/BF00317444).
- Yoccoz NG, Stenseth NC, Henttonen H, Prevot-Julliard AC. 2001.** Effects of food addition on the seasonal density-dependent structure of bank vole *Clethrionomys glareolus* populations. *Journal of Animal Ecology* **70**(5):713–720 DOI [10.1046/j.0021-8790.2001.00531.x](https://doi.org/10.1046/j.0021-8790.2001.00531.x).