

Knee replacement outcome predicted by physiotherapists: a prospective cohort study

Marius Henriksen ^{Corresp., 1}, Hiwa Mukriyani ¹, Carsten Juhl ^{2, 3}

¹ The Parker Institute, Copenhagen University Hospital Bispebjerg-Frederiksberg, Copenhagen, Denmark

² Department of Physiotherapy and Occupational Therapy, Copenhagen University Hospital, Herlev-Gentofte, Copenhagen, Denmark

³ Department of Sports Science and Clinical Biomechanics, University of Southern Denmark, Odense, Denmark

Corresponding Author: Marius Henriksen

Email address: marius.henriksen@regionh.dk

Background: Knee arthroplasty (KA) is commonly used for osteoarthritis of the knee joint and it is a highly successful procedure. Still, KA leaves 20% of patients dissatisfied with their outcome. The purpose of this study was to determine if a prognosis made by physiotherapists at the orthopaedic wards during the first post-operative days could predict the 6- and 12-months outcome of KA.

Methods: Physiotherapists at two orthopaedic wards in Denmark were asked to predict the 6- and 12-months outcome of the KA patients they have treated post-operatively on a 0-10 scale (10 representing the best prognosis). At 6 and 12 months post-operatively the patients answered the Oxford Knee Score (OKS), EuroQol 5D-3L and Patient Acceptable Symptom State (PASS). Multivariable logistic regression analyses were performed to assess the prediction of PASS and treatment success. We assessed predictive performance by examining measures of calibration and discrimination.

Results: 361 patients were included. The models for PASS and Treatment Success showed poor to acceptable discriminative values (OR between 1.47 and 1.92 and areas under the curves of 0.62-0.73), however the calibration plots indicated significant uncertainties in the prediction.

Conclusion: Physiotherapists prognoses of recovery after KA are associated with 6- and 12-months patient reported outcomes and satisfaction but have weak predictive value. This study suggests that physiotherapists' prognoses may be useful as an additional source of information when identifying patients in need of additional post-operative care.

KNEE REPLACEMENT OUTCOME PREDICTED BY PHYSIOTHERAPISTS: A PROSPECTIVE COHORT STUDY

Marius Henriksen¹, Hiwa Mukriyani¹, Carsten Juhl^{2,3}

¹ The Parker Institute, Copenhagen University Hospital Bispebjerg-Frederiksberg, Copenhagen, Denmark

² Department of Physiotherapy and Occupational Therapy, Copenhagen University Hospital, Herlev and Gentofte, Copenhagen, Denmark

³ Department of Sports Science and Clinical Biomechanics, University of Southern Denmark, Odense, Denmark

Corresponding Author:

Marius Henriksen¹

The Parker Institute, Bispebjerg-Frederiksberg Hospital, Ndr. Fasanvej 57, DK-2000 Frederiksberg, Denmark

Email address: Marius.henriksen@regionh.dk

Abstract

Background: Knee arthroplasty (KA) is commonly used for osteoarthritis of the knee joint and it is a highly successful procedure. Still, KA leaves 20% of patients dissatisfied with their outcome. The purpose of this study was to determine if a prognosis made by physiotherapists at the orthopaedic wards during the first post-operative days could predict the 6- and 12-months outcome of KA.

Methods: Physiotherapists at two orthopaedic wards in Denmark were asked to predict the 6- and 12-months outcome of the KA patients they have treated post-operatively on a 0-10 scale (10 representing the best prognosis). At 6 and 12 months post-operatively the patients answered the Oxford Knee Score (OKS), EuroQol 5D-3L and Patient Acceptable Symptom State (PASS). Multivariable logistic regression analyses were performed to assess the prediction of PASS and treatment success. We assessed predictive performance by examining measures of calibration and discrimination.

Results: 361 patients were included. The models for PASS and Treatment Success showed poor to acceptable discriminative values (OR between 1.47 and 1.92 and areas under the curves of 0.62-0.73), however the calibration plots indicated significant uncertainties in the prediction.

Conclusion: Physiotherapists prognoses of recovery after KA are associated with 6- and 12-months patient reported outcomes and satisfaction but have weak predictive value. This study suggests that physiotherapists' prognoses may be useful as an additional source of information when identifying patients in need of additional post-operative care.

Introduction

Knee arthroplasty (KA) is considered a successful orthopaedic procedure to alleviate knee pain and disability in knee osteoarthritis (OA) and the demand for KA is large and growing worldwide (Ackerman et al. 2019; Culliford et al. 2015; Nemes et al. 2015). Despite being considered a generally safe and successful procedure, there is a significant proportion (20%) of patients who endure years of disability and dissatisfaction with their postoperative function (Bourne et al. 2010; Gunaratne et al. 2017; Kahlenberg et al. 2018). Many of these patients do not undergo revision surgery, but all add to the society's burden of health care as clinicians and allied services strive to remedy their dissatisfaction.

While efforts have been made to predict the best candidates for KA (Birch et al. 2019; Harbourne et al. 2019; Judge et al. 2012) it has proven very difficult to identify robust pre-operative prognostic factors (Gunaratne et al. 2017). It is important to be able to identify inappropriate candidates pre-operatively, but until that is possible, efforts to improve post-operative rehabilitation and identify individuals that may need special attention post-operatively is equally important.

Physiotherapists play an important role in the post-operative treatment of patients that have received a KA. In general patients are mobilised very early, and rehabilitation is commenced during the first days after surgery (or even on the same day) while the patient is still hospitalised. There are numerous factors that can predict the outcome of KA, of which most are either poor predictors or unsatisfactorily assessed scientifically (Harmelink et al. 2017). In daily clinical physiotherapy practice at the orthopaedic wards, previous experiences, knowledge, and personal interaction with a patient altogether result in the physiotherapist's intuition about the future course of a patient's recovery. Previously, it has been shown that physiotherapists' prognoses

during the initial clinical encounter for the projected outcome of patients with low back and neck pain they treated, was associated with the actual clinical outcome (Cook et al. 2015). However, it is unknown if such intuition is a reliable predictor of the outcome of KA.

With this study we aimed to assess if physiotherapists treating inpatients at orthopaedic wards could predict the 6- and 12-months post-operative self-reported pain, functional status and health related quality of life of patients undergoing KA.

Materials & Methods

The study is a prospective, pragmatic, longitudinal cohort study conducted from December 2016 to December 2019 with a 6- and 12-month follow-up. The study was conducted according to a prespecified protocol, which was pre-registered and submitted to the Health Research Ethics Committee of The Capital Region of Denmark (file number: 16039254). The committee deemed the study exempt from approval as the study only uses questionnaire data. Such studies can be implemented without approval from the Health Research Ethics Committee according to Danish legislation. The prespecified study protocol was pre-registered at www.clinicaltrials.gov (Identifier: NCT02982785) prior to data collection.

Participants

Participants were recruited from the orthopaedic wards at Bispebjerg-Frederiksberg Hospital and Herlev-Gentofte Hospital in Copenhagen, Denmark. The inclusion criteria were: Primary total KA for knee OA; Age >18 years; Read and speak Danish and having an email-address. The exclusion criteria were: Revision surgery and cognitive or mental conditions precluding reliable

answers to online questionnaires (determined either from medical records or judged by the including physiotherapists). All participating patients signed an informed consent.

Procedures

During the post-operative hospital stay, eligible participants were identified by the physiotherapists and invited to participate in the study. Upon signed informed consent, baseline data were collected using standardized forms. At discharge, physiotherapists delivering the initial in-patient physiotherapy and mobilization judged the participants' prognosis (see below). Study data were collected and managed using REDCap electronic data capture tools hosted at The Capital Region of Denmark (Harris et al. 2019; Harris et al. 2009). REDCap (Research Electronic Data Capture) is a secure, web-based software platform designed to support data capture for research studies, providing 1) an intuitive interface for validated data capture; 2) audit trails for tracking data manipulation and export procedures; 3) automated export procedures for seamless data downloads to common statistical packages; and 4) procedures for data integration and interoperability with external sources. Via REDCap, individual internet-hyperlinks were emailed to the participants 6 and 12 months after discharge. The hyperlinks led to a secured webpage on which the patients answered questionnaires. The participant-submitted responses were automatically registered in a secured database. At both 6- and 12-months data collection points an email reminder was sent to participants if they did not answer the questionnaires within 7 days.

Physiotherapists' prognoses

The physiotherapists estimated each patient's potential for a successful outcome after 6-12 months at discharge based on professional appraisal. The physiotherapists were asked to appraise all parts of their evaluation in their prognosis of each patient. The physiotherapists were instructed to score each patient on a 1-10 Likert scale (1 representing a very poor projected outcome, 10 representing an excellent projected outcome). The physiotherapists scored each patient following their complete encounter with the patient. This included the physiotherapist's assessment of the patient's resources (personal, material, social, etc.), personality, medical history, comorbidities, surgery reports, physical examination(s), in-patient physiotherapy treatment response(s), physiotherapeutic (re)assessments, and more. The prognosis was not disclosed to the participants.

Outcomes

The primary outcome measure was the Oxford Knee Score (OKS). The Oxford Knee Score (OKS) is a 12-item Patient Reported Outcome questionnaire developed specifically to assess the patient's perspective of outcome following KA (Dawson et al. 1998). Standardized answer options are given (5 Likert boxes) and each question is assigned a score from 0 to 4. A total score is calculated that ranges from 0 and 48, with 48 indicating the best outcome. The OKS is short, practical, reliable, valid, and sensitive to clinically important changes over time (Dawson et al. 1998). The OKS scores were dichotomised using an established cut-off value for treatment success after TKA of 32.5 points (Hamilton et al. 2018). The dichotomised OKS was labelled as 'Treatment Success' for scores above 32.5 at both 6- and 12-months follow-up. In addition to the single OKS summary score, we also calculated the OKS pain and OKS function sub-scale scores that were standardized to a range from 0 (worst) to 100 (best).

Health outcome and quality of life was assessed using the European Quality of Life (EuroQoL) questionnaire (EQ-5D-3L). EQ-5D-3L is a standardized patient-reported instrument for use measuring health outcome and quality of life (EuroQol 1990). EQ-5D-3L is designed for self-completion by respondents and is ideally suited for use in surveys.

The EQ-5D-3L consists of a descriptive system and a Visual Analogue scale (EQ-5D-VAS). The descriptive system comprises 5 dimensions (mobility, self-care, usual activities, pain/discomfort, and anxiety/depression). Standardized answer options are given (3 Likert boxes) and each question is assigned a score from 1 to 3. From the answers an EQ-5D-3L index score is calculated based on Danish normative equations. The index ranges from -0.624 (worst) to 1.000 (best). The EQ-5D-VAS records the respondent's current self-rated health on a 10 cm Visual Analogue Scale (VAS) with endpoints labelled '*the best health you can imagine*' and '*the worst health you can imagine*'.

We also applied a single question regarding the Patient Acceptable Symptom State (PASS) (Tubach et al. 2005) to assess the patient's satisfaction with their state of symptoms at 6 and 12 months after surgery. PASS is assessed as a dichotomous outcome (yes/no) to the question: "*Considering your knee function, do you feel that your current state is satisfactory? With knee function you should take into account all activities you have during your daily life, Sport/Recreational activities, your level of pain and other symptoms, and your knee related QOL*".

Statistical analyses

The 6- and 12-months follow-up data were analyzed separately. The associations between the physiotherapists' prognostic scores and the dichotomous PASS and Treatment Success variables

were assessed using logistic regression analyses with the physiotherapists' prognostic scores as independent variable and PASS ('yes') and Treatment Success as dependent variables. The predictive performance of the physiotherapists' prognostic scores was analysed using calibration and discrimination measures. Discrimination relates to the ability of the model to discriminate between patients who have answered 'yes' to the PASS question or achieved Treatment Success from those who have answered 'no' or did not achieve Treatment Success. These were evaluated by calculating the areas under the receiver operating characteristic curves (AUC) and Nagelkerke R^2 as an indication of explained variation. Calibration relates to the agreement between the projected and observed outcome and was evaluated by means of calibration plots, in which patients were classified by the predicted risk of the observed prognostic scores, supplemented by loess lines over the predicted probability range. The loess line of a perfect prediction model lies on the 45° slope for agreement with the observed outcome. The associations between the physiotherapists' prognostic scores and the continuous variables OKS, OKS-pain, OKS-function, EQ-5D-3L index and EQ-5D-VAS were assessed by univariate linear regression analyses with the physiotherapists' prognostic scores as independent variable and OKS, OKS-pain, OKS-function, EQ-5D-3L and EQ-5D-VAS as dependent variables. The associations were assessed via the estimated slopes (beta) and explained variance (R^2). P-values of <0.05 were considered statistically significant.

Results

From December 2017 to December 2018 a total of 382 individuals (57% women) were invited to participate (**Table 1**). Of these 20 were not eligible and 1 did not have a prognostic score.

Accordingly, 361 patients were included with a mean age of 69.2 years (SD 7.9). There were 42 patients who did not respond to any survey or reminders, 16 who responded to the 6-month but not the 12-month survey, and 12 who did not respond to the 6-months but responded to the 12-month survey (**Figure 1**). Thus, at the 6-month follow-up 307 answered the survey and at 12 months 303 answered the survey.

The prognostic scores ranged from 4 to 10, with a mean of 8.3 (SD 1.2) and the median being 9 (**Table 1**). Summaries of the outcome variables are presented in **Table 2**.

At the 6-month follow-up, the incidence of positive answers ('yes') to the PASS was 240 (78%) and Treatment Success (OKS>32.5) was 251 (82%). At the 12-month follow-up the incidence of positive PASS answer was 255 (85%) and of Treatment Success was 251 (83%).

A high prognostic score increased the odds of achieving PASS ('yes') at 6 months (OR = 1.47 (95% confidence interval 1.19 to 1.82)) and at 12 months (OR = 1.45 (95% CI 1.14 to 1.84)). Similarly, a high prognostic score increased the odds of Treatment Success at 6 months (OR = 1.62 (95% 1.29 to 2.03)) and at 12 months (OR = 1.92 (95% CI 1.51 to 2.46)).

The performance of these models in terms of discrimination is presented in **Table 3**. The prediction of positive answer to the PASS and Treatment Success at 6 months showed

statistically significant yet poor discrimination (AUC 0.62 and 0.67, respectively). At 12 months the prediction of positive answer to the PASS and Treatment Success showed poor to acceptable discrimination (AUC 0.64 and 0.73, respectively).

The calibration of the models in the validation cohort is presented using calibration curves (**Figure 2**) showing the performance of the models for PASS and Treatment Success at 6 and 12 months.

The results of the univariate regression analyses used to assess the prediction of the continuous outcomes are given in **Table 4**. The prognostic score was statistically significantly associated with all the dependent variables at both 6 and 12 months, although with limited explained variance ($R^2 < 0.12$; **Table 4**).

207 Discussion

208 In summary these findings support the hypothesis, that the prognostic scores of future outcomes
 209 made by physiotherapists attending patients undergoing KA in the first days postoperatively
 210 associate with the 6- and 12-month outcomes of KA. The discriminative performance can be
 211 considered poor to acceptable. However, the AUC and ROC curve analyses did not suggest a
 212 cut-off value that may be used to screen patients. Although the calibration plots suggest a linear
 213 relationship between the predicted and observed probability of PASS and Treatment Success
 214 there are significant uncertainties as judged by the 95% confidence intervals. From Figure 2 is
 215 can be seen that the uncertainties (width of the 95% CI) are related to the distribution of the
 216 predicted probabilities. This is likely due to the small number of patients with low prognostic
 217 scores (table 1). The linear regressions show that the physiotherapists' prognostic scores are
 218 associated with the 6- and 12-months outcomes. Altogether the data suggest that the
 219 physiotherapists' prognoses associate with the outcomes, but the predictive values of the scores
 220 are not convincing. Thus, the physiotherapists' prognostic scores should be supported by other
 221 information and individual assessments (such as age, sex, body weight, post-operative pain and
 222 mobility, comorbidities etc.), when the future course of a patient is discussed and decisions about
 223 possible extra attention is taken. Further studies on defining patients that may not have
 224 successful outcomes of KA are needed.

225 The present study is the first on physiotherapists' prognoses of KA. Previously, it has been
 226 shown that physiotherapists' prognoses during the initial clinical encounter for the projected
 227 outcome of patients with low back and neck pain they treated, was associated with the actual
 228 clinical outcome (Cook et al. 2015).

A strength to the present study is the use of outcomes widely accepted for assessing outcomes of KA (Conner-Spady et al. 2018; Dunbar et al. 2001; Garratt et al. 2004; Jin et al. 2019). The total mean OKS score of the cohort, is comparable with the ones found in other studies (Williams et al. 2013a; Williams et al. 2013b), which support the external validity of the results. Also, the relatively large cohort provides some strength to the study. Further, the fact that the physiotherapists who made the prognoses were not involved in delivery of any post-operative rehabilitation is a significant strength as they could not influence the rehabilitation. Finally, it is a strength that the study was carried out on two independent hospitals in Denmark, which strengthen the generalizability of the results.

The study also has some limitations. Firstly, other types of information (such as pain intensity and functional disability, body weight, comorbidities etc.) from the pre-operative and first post-operative days could have been useful in identification of potentially modifiable factors (such as body weight, muscle strength, functional disability, adjustment in treatment of comorbidities) that associate with the prognoses. Such information could have helped identifying the underlying factors that the physiotherapists based their prognoses on and used to propose future interventions to mitigate negative outcomes. Further, the distribution of the prognostic scores were skewed, with few low scores, which probably reflects the general successfulness of KA and that the physiotherapists in general expect positive outcomes. Nevertheless, about 15% of the patients did not reach PASS or Treatment Success after 12 months and could be candidates for special post-operative attention . In this perspective, the physiotherapist prognosis may be used to inform the identification of patients who may benefit from more intensive post-operative care in order to enhance the outcome of KA. However, the present data suggest that such identification should not rely solely on the physiotherapists prognoses but should incorporate

other sources of information. Also, the instruments used to assess treatment success and patient satisfaction (OKS and PASS) does not necessarily cover all aspects, as numerous factors determine these. An OKS score above 32.5 (treatment success) does not necessarily indicate success for the patient and the single yes/no PASS answer is not exhaustive. Several instruments to assess patient satisfaction after KA exist (Kahlenberg et al. 2018), yet there is no consensus on which instrument to use to assess treatment success or patient satisfaction. However, these instruments (OKS and PASS) are widely used in OA and KA clinical and research settings.

Conclusions

In conclusion, physiotherapists prognoses of recovery after KA are associated with 6- and 12-months patient reported outcomes and satisfaction but have weak predictive value. This study suggests that physiotherapists' prognoses may be useful as an additional source of information when identifying patients in need of additional post-operative care.

References

- Ackerman IN, Bohensky MA, Zomer E, Tacey M, Gorelik A, Brand CA, and de Steiger R. 2019. The projected burden of primary total knee and hip replacement for osteoarthritis in Australia to the year 2030. *BMC Musculoskelet Disord* 20:90. 10.1186/s12891-019-2411-9
- Birch S, Stilling M, Mechlenburg I, and Hansen TB. 2019. The association between pain catastrophizing, physical function and pain in a cohort of patients undergoing knee arthroplasty. *BMC Musculoskelet Disord* 20:421. 10.1186/s12891-019-2787-6

274 Bourne RB, Chesworth BM, Davis AM, Mahomed NN, and Charron KD. 2010. Patient
275 satisfaction after total knee arthroplasty: who is satisfied and who is not? *Clin Orthop*
276 *Relat Res* 468:57-63. 10.1007/s11999-009-1119-9

277 Conner-Spady BL, Marshall DA, Bohm E, Dunbar MJ, and Noseworthy TW. 2018. Comparing
278 the validity and responsiveness of the EQ-5D-5L to the Oxford hip and knee scores and
279 SF-12 in osteoarthritis patients 1 year following total joint replacement. *Qual Life Res*
280 27:1311-1322. 10.1007/s11136-018-1808-5

281 Cook CE, Moore TJ, Learman K, Showalter C, and Snodgrass SJ. 2015. Can experienced
282 physiotherapists identify which patients are likely to succeed with physical therapy
283 treatment? *Archives of Physiotherapy* 5:3. 10.1186/s40945-015-0003-z

284 Culliford D, Maskell J, Judge A, Cooper C, Prieto-Alhambra D, Arden NK, and Group COS.
285 2015. Future projections of total hip and knee arthroplasty in the UK: results from the UK
286 Clinical Practice Research Datalink. *Osteoarthritis Cartilage* 23:594-600.
287 10.1016/j.joca.2014.12.022

288 Dawson J, Fitzpatrick R, Murray D, and Carr A. 1998. Questionnaire on the perceptions of
289 patients about total knee replacement. *J Bone Joint Surg Br* 80:63-69.

290 Dunbar MJ, Robertsson O, Ryd L, and Lidgren L. 2001. Appropriate questionnaires for knee
291 arthroplasty. Results of a survey of 3600 patients from The Swedish Knee Arthroplasty
292 Registry. *J Bone Joint Surg Br* 83:339-344. 10.1302/0301-620x.83b3.11134

293 EuroQol G. 1990. EuroQol--a new facility for the measurement of health-related quality of life.
294 *Health Policy* 16:199-208. 10.1016/0168-8510(90)90421-9

295 Garratt AM, Brealey S, Gillespie WJ, and Team DT. 2004. Patient-assessed health instruments
296 for the knee: a structured review. *Rheumatology (Oxford)* 43:1414-1423.
297 10.1093/rheumatology/keh362

298 Gunaratne R, Pratt DN, Banda J, Fick DP, Khan RJK, and Robertson BW. 2017. Patient
299 Dissatisfaction Following Total Knee Arthroplasty: A Systematic Review of the
300 Literature. *J Arthroplasty* 32:3854-3860. 10.1016/j.arth.2017.07.021

301 Hamilton DF, Loth FL, MacDonald DJ, Giesinger K, Patton JT, Simpson AH, Howie CR, and
302 Giesinger JM. 2018. Treatment Success Following Joint Arthroplasty: Defining
303 Thresholds for the Oxford Hip and Knee Scores. *J Arthroplasty* 33:2392-2397.
304 10.1016/j.arth.2018.03.062

305 Harbourne AD, Sanchez-Santos MT, Arden NK, and Filbay SR. 2019. Predictors of return to
306 desired activity 12 months following unicompartmental and total knee arthroplasty. *Acta*
307 *Orthop* 90:74-80. 10.1080/17453674.2018.1542214

308 Harmelink KEM, Zeegers A, Hullegie W, Hoozeboom TJ, Nijhuis-van der Sanden MWG, and
309 Staal JB. 2017. Are There Prognostic Factors for One-Year Outcome After Total Knee
310 Arthroplasty? A Systematic Review. *J Arthroplasty* 32:3840-3853 e3841.
311 10.1016/j.arth.2017.07.011

312 Harris PA, Taylor R, Minor BL, Elliott V, Fernandez M, O'Neal L, McLeod L, Delacqua G,
313 Delacqua F, Kirby J, Duda SN, and Consortium RE. 2019. The REDCap consortium:
314 Building an international community of software platform partners. *J Biomed Inform*
315 95:103208. 10.1016/j.jbi.2019.103208

316 Harris PA, Taylor R, Thielke R, Payne J, Gonzalez N, and Conde JG. 2009. Research electronic
317 data capture (REDCap)--a metadata-driven methodology and workflow process for

providing translational research informatics support. *J Biomed Inform* 42:377-381.
10.1016/j.jbi.2008.08.010

Jin X, Al Sayah F, Ohinmaa A, Marshall DA, and Johnson JA. 2019. Responsiveness of the EQ-5D-3L and EQ-5D-5L in patients following total hip or knee replacement. *Qual Life Res* 28:2409-2417. 10.1007/s11136-019-02200-1

Judge A, Arden NK, Cooper C, Kassim Javaid M, Carr AJ, Field RE, and Dieppe PA. 2012. Predictors of outcomes of total knee replacement surgery. *Rheumatology (Oxford)* 51:1804-1813. 10.1093/rheumatology/kes075

Kahlenberg CA, Nwachukwu BU, McLawhorn AS, Cross MB, Cornell CN, and Padgett DE. 2018. Patient Satisfaction After Total Knee Replacement: A Systematic Review. *HSS J* 14:192-201. 10.1007/s11420-018-9614-8

Nemes S, Rolfson O, A WD, Garellick G, Sundberg M, Karrholm J, and Robertsson O. 2015. Historical view and future demand for knee arthroplasty in Sweden. *Acta Orthop* 86:426-431. 10.3109/17453674.2015.1034608

Tubach F, Ravaud P, Baron G, Falissard B, Logeart I, Bellamy N, Bombardier C, Felson D, Hochberg M, van der Heijde D, and Dougados M. 2005. Evaluation of clinically relevant states in patient reported outcomes in knee and hip osteoarthritis: the patient acceptable symptom state. *Ann Rheum Dis* 64:34-37. 10.1136/ard.2004.023028

Williams DP, Blakey CM, Hadfield SG, Murray DW, Price AJ, and Field RE. 2013a. Long-term trends in the Oxford knee score following total knee replacement. *Bone Joint J* 95-B:45-51. 10.1302/0301-620X.95B1.28573

339 Williams DP, Price AJ, Beard DJ, Hadfield SG, Arden NK, Murray DW, and Field RE. 2013b.
 340 The effects of age on patient-reported outcome measures in total knee replacements.
 341 *Bone Joint J* 95-B:38-44. 10.1302/0301-620X.95B1.28061
 342

Table 1(on next page)

Age, sex and prognostic scores at baseline among all invited participants and the survey responders.

Table 1. Age, sex and prognostic scores at baseline among all invited participants and the survey responders.

	All (n=361)	Respondents at 6 months (n=307)	Respondents at 12 months (n=303)
Age	69.2 (7.9)	68.6 (7.9)	68.8 (7.8)
Female, n(%)	207 (57%)	176 (57%)	172 (57%)
PT Prognosis, n(%)			
10	59 (16%)	54 (18%)	55 (18%)
9	127 (35%)	109 (35%)	102 (34%)
8	96 (27%)	81 (26%)	82 (27%)
7	48 (13%)	37 (12%)	39 (13%)
6	21 (6%)	17 (6%)	18 (6%)
5	8 (2%)	7 (2%)	6 (2%)
4	2 (1%)	2 (1%)	2 (1%)
PT, Physiotherapist			

Table 2(on next page)

Group means and standard deviations (SD) in the different outcome measures at the 6- and 12-months follow-up.

Table 2. Group means and standard deviations (SD) in the different outcome measures at the 6- and 12-months follow-up.

	Mean (SD)
OKS (0-48)	
6 months	37.6 (7.4)
12 months	39.7 (7.7)
OKS pain (0-100)	
6 months	80.2 (16.9)
12 months	84.7 (16.8)
OKS function (0-100)	
6 months	77.4 (15.9)
12 months	80.0 (16.8)
EQ-5D-3L index (-0.624 to 1.000)	
6 months	0.843 (0.145)
12 months	0.868 (0.153)
EQ-5D VAS (0-100)	
6 months	78.9 (16.7)
12 months	79.5 (18.3)
OKS: Oxford Knee Score; EQ-5D: EuroQoL 5 Dimensions; VAS: Visual Analog Scale	

Table 3(on next page)

Performance of prediction.

Table 3. Performance of prediction.

	AUC (95% CI)	R ²
PASS negative answer		
6 months	0.62 (0.54 to 0.70)	0.06
12 months	0.64 (0.56 to 0.73)	0.05
No Treatment Success		
6 months	0.67 (0.59 to 0.75)	0.09
12 months	0.73 (0.65 to 0.80)	0.16
AUC: Area Under the Curve; CI: Confidence Interval; PASS: Patient Acceptable Symptom State		

Table 4(on next page)

Results of the univariate linear regression analyses with the physiotherapists' prognostic scores as predictor

Table 4. Results of the univariate linear regression analyses with the physiotherapists' prognostic scores as predictor

Dependent variable	6 months			12 months		
	Slope (95%CI)	P	R ²	Slope (95%CI)	P	R ²
OKS	1.9 (1.2 to 2.5)	<0.0001	0.10	2.1 (1.5 to 2.8)	<0.0001	0.12
OKS Pain	4.0 (2.5 to 5.4)	<0.0001	0.08	4.5 (3.0 to 5.9)	<0.0001	0.11
OKS Function	3.9 (2.5 to 5.2)	<0.0001	0.09	4.4 (2.9 to 5.8)	<0.0001	0.10
EQ-5D-3L Index	0.03 (0.02 to 0.05)	<0.0001	0.08	0.04 (0.03 to 0.06)	<0.0001	0.12
EQ-5D VAS	3.2 (1.8 to 4.7)	<0.0001	0.06	3.6 (2.0 to 5.2)	<0.0001	0.06
OKS: Oxford Knee Score; EQ-5D: European Quality of Life 5 dimensions; VAS: Visual Analog Scale						

Figure 1

Study flow chart

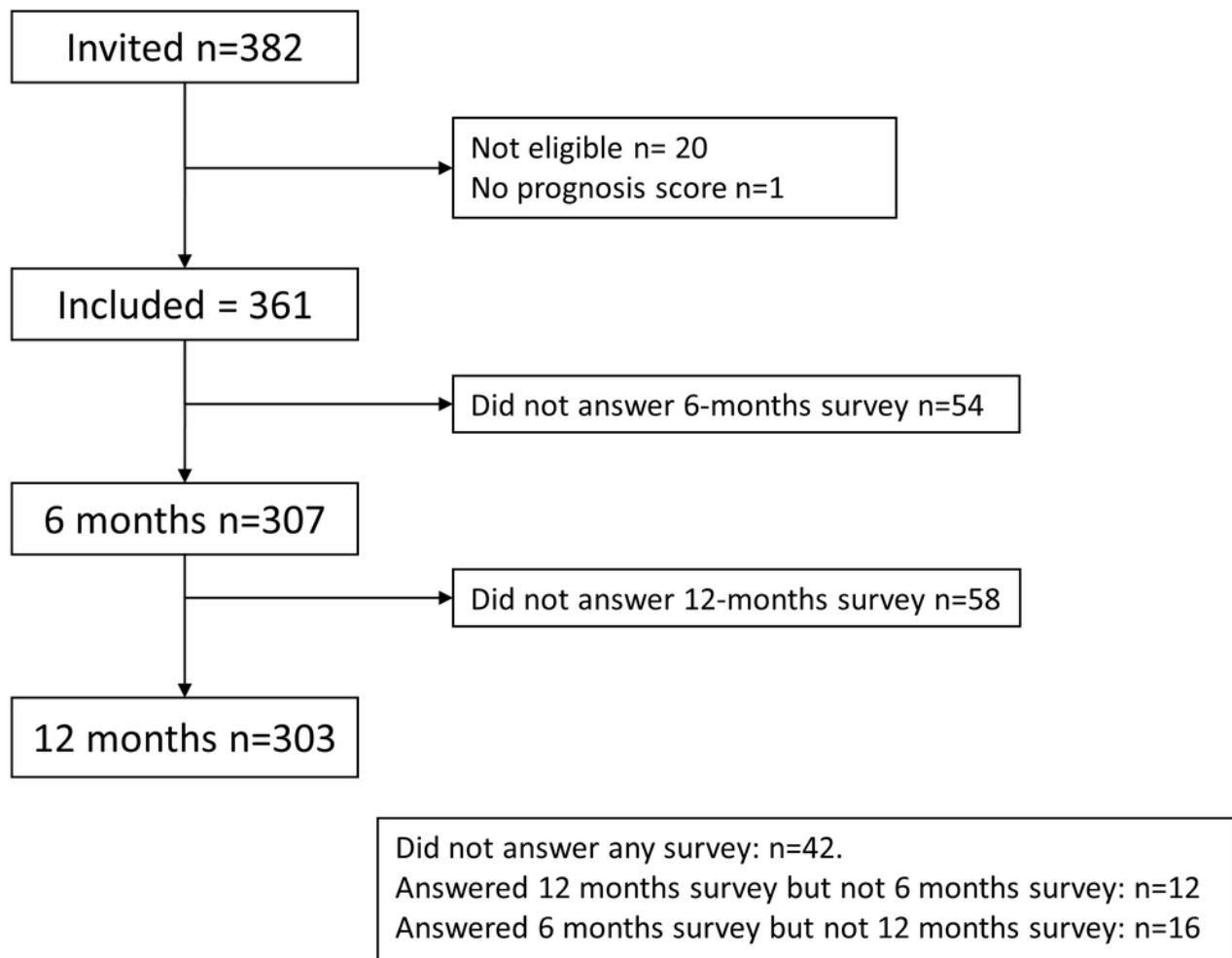


Figure 2

Calibration plots for PASS and Treatment Success at 6 and 12 months.

Predicted probability of achieving either PASS or Treatment Success is given on the x-axis, and the observed probability is given on the y-axis. The dashed diagonal line represents perfect agreement between the predicted and actual probability of PASS or Treatment Success. The dots represent the physiotherapists prognostic scores. Error bars are 95% confidence intervals. At the x-axis, the distribution of the predicted probabilities is shown.

