

# ***Klebsiella pneumoniae* subsp. *pneumoniae*-bacteriophage combination from the caecal effluent of a healthy woman**

Lesley Hoyles, James Murphy, Horst Neve, Knut J Heller, Jane F Turton, Jennifer Mahony, Jeremy D Sanderson, Barry Hudspith, Glenn R Gibson, Anne L McCartney, Douwe van Sinderen

A sample of caecal effluent was obtained from a female patient who had undergone a routine colonoscopic examination. Bacteria were isolated anaerobically from the sample, and screened against the remaining filtered caecal effluent in an attempt to isolate bacteriophages (phages). A lytic phage, named KLPN1, was isolated on a strain identified as *Klebsiella pneumoniae* subsp. *pneumoniae* (capsular type K2, *rmpA*<sup>+</sup>). This *Siphoviridae* phage presents a rosette-like tail tip and exhibits depolymerase activity, as demonstrated by the formation of plaque-surrounding haloes that increased in size over the course of incubation. When screened against a panel of clinical isolates of *K. pneumoniae* subsp. *pneumoniae*, phage KLPN1 was shown to infect and lyse capsular type K2 strains, though it did not exhibit depolymerase activity on such hosts. The genome of KLPN1 was determined to be 49,037 bp (50.53 %GC) in length, encompassing 73 predicted ORFs, of which 23 represented genes associated with structure, host recognition, packaging, DNA replication and cell lysis. On the basis of sequence analyses, phages KLPN1 (GenBank: KR262148) and 1513 (a member of the family *Siphoviridae*, GenBank: KP658157) were found to be two new members of the genus “Kp36likevirus”.

***Klebsiella pneumoniae* subsp. *pneumoniae*–bacteriophage combination from the caecal effluent of a healthy woman**

Lesley Hoyles<sup>1,2\*</sup>, James Murphy<sup>1\*</sup>, Horst Neve<sup>3</sup>, Knut J. Heller<sup>3</sup>, Jane F. Turton<sup>4</sup>, Jennifer Mahony<sup>1</sup>, Jeremy D. Sanderson<sup>5</sup>, Barry Hudspith<sup>5</sup>, Glenn R. Gibson<sup>6</sup>, Anne L. McCartney<sup>6</sup> and Douwe van Sinderen<sup>1,7</sup>

<sup>1</sup>School of Microbiology, University College Cork, Cork, Ireland

<sup>2</sup>Department of Biomedical Sciences, University of Westminster, 115 New Cavendish Street, London W1W 6UW, United Kingdom

<sup>3</sup>Max Rubner – Institut (MRI), Institute of Microbiology and Biotechnology (MBT), Kiel, Germany

<sup>4</sup>Antimicrobial Resistance and Healthcare Associated Infections Reference Unit, Public Health England – Colindale, 61 Colindale Avenue, London NW9 5EQ, United Kingdom

<sup>5</sup>Department of Gastroenterology, Guy's and St Thomas' NHS Foundation Trust and King's College London, London, United Kingdom

<sup>6</sup>Food Microbial Sciences Unit, Department of Food and Nutritional Sciences, University of Reading, Whiteknights Campus, Reading, Berkshire, United Kingdom

<sup>7</sup>Alimentary Pharmabiotic Centre, University College Cork, Cork, Ireland

**Correspondence:** Douwe van Sinderen, d.vansinderen@ucc.ie; Lesley Hoyles, l.hoyles@westminster.ac.uk

\*These authors made equal contributions to this work.

25

26 **Keywords:** depolymerase, biofilm, microbial ecology, gut microbiota, *Siphoviridae*

27 **Abbreviations:** ESBL, extended-spectrum  $\beta$ -lactamase; VLP, virus-like particle; VNTR,

28 variable number tandem repeat.

29

30 **Running title:** Lytic bacteriophage from human caecum

## ABSTRACT

A sample of caecal effluent was obtained from a female patient who had undergone a routine colonoscopic examination. Bacteria were isolated anaerobically from the sample, and screened against the remaining filtered caecal effluent in an attempt to isolate bacteriophages (phages). A lytic phage, named KLPN1, was isolated on a strain identified as *Klebsiella pneumoniae* subsp. *pneumoniae* (capsular type K2, *rmpA*<sup>+</sup>). This *Siphoviridae* phage presents a rosette-like tail tip and exhibits depolymerase activity, as demonstrated by the formation of plaque-surrounding haloes that increased in size over the course of incubation. When screened against a panel of clinical isolates of *K. pneumoniae* subsp. *pneumoniae*, phage KLPN1 was shown to infect and lyse capsular type K2 strains, though it did not exhibit depolymerase activity on such hosts. The genome of KLPN1 was determined to be 49,037 bp (50.53 %GC) in length, encompassing 73 predicted ORFs, of which 23 represented genes associated with structure, host recognition, packaging, DNA replication and cell lysis. On the basis of sequence analyses, phages KLPN1 (GenBank: KR262148) and 1513 (a member of the family *Siphoviridae*, GenBank: KP658157) were found to be two new members of the genus “Kp36likevirus”.

## INTRODUCTION

Metagenomic studies on samples from a range of different environments and the potential of bacteriophage (phage) therapy to treat antibiotic-resistant, clinically relevant bacteria have renewed interest in virus-like particles (VLPs). Metagenomic (virome) studies, in particular, have demonstrated that VLPs are the most genetically diverse entities in the biosphere (Reyes *et al.*, 2012). Given their staggering abundance and diversity, coupled to their perceived crucial role in the functioning of ecosystems, it is surprising that VLPs (and by extension, phages) remain the most poorly characterized biological entities (Reyes *et al.*, 2012).

Virome and classical studies examining VLPs in the faeces of adults and infants have demonstrated that there is a vast diversity and abundance of phages associated with the human gut microbiota (Breitbart *et al.*, 2003, 2008; Lepage *et al.*, 2008; Reyes *et al.*, 2010; Kim *et al.*, 2011; Minot *et al.*, 2011; Wagner *et al.*, 2013; Hoyles *et al.*, 2014). Similar to the prokaryotic make-up of the human gut microbiota, each individual harbours a unique virome (dsDNA, ssDNA, RNA) that is temporally stable, and whose composition appears to be influenced by diet (Reyes *et al.*, 2010; Minot *et al.*, 2011, 2013). Lepage *et al.* (2008) reported that mucosal biopsies taken from healthy individuals and Crohn's patients contained between  $4.4 \times 10^7$  and  $1.7 \times 10^{10}$  (mean  $1.2 \times 10^9$ ) VLPs/biopsy, with Crohn's patients harbouring significantly more VLPs in their biopsies than healthy individuals. A recent study in which phage populations in human faecal and caecal-effluent samples were estimated using epifluorescence microscopy (EFM) and transmission electron microscopy (TEM) reported the presence of up to  $10^{12}$  VLPs/g faeces (EFM) and at least  $1 \times 10^5$  VLPs/ml caecal effluent (TEM) (Hoyles *et al.*, 2014). However, little is known about the host ranges of these VLPs, and their abundance within other regions of the gastrointestinal tract.

Generation of comprehensive gut virome data has been hampered by the lack of available methods for concentrating VLPs within faecal samples and extracting sufficient amounts of DNA from them so sequencing can be performed without the need to amplify the template DNA (Reyes *et al.*, 2012). However, the recent publication of a PEGylation method applied to human faecal samples and demonstration that microgram quantities of DNA can be isolated from faecal VLPs has gone some way to overcome this substantial technical hurdle (Hoyles *et al.*, 2014). When it comes to annotation of virome sequence data, a major stumbling block is the lack of available phage genome sequences against which contigs can be compared, plus the large number of viral genes that are currently not represented in sequence databases. For example, studies of the human faecal virome have reported that between 66 % and 98 % of the generated sequences have no significant hits with GenBank sequences (Breitbart *et al.*, 2008; Reyes *et al.*, 2010; Minot *et al.*, 2011). There are few, if any, available sequences for human-gut-associated lytic phages so there is a need to isolate and genomically characterize phages from gastrointestinal sources, rather than relying on the assumption that phages found in sewage are primarily of human gut origin. However, sequences of (predicted) prophages from genome sequences of bifidobacteria, lactobacilli, *Helicobacter pylori* and *Escherichia coli* (strain Nissle 1917) of gastrointestinal origin are available (Ventura *et al.*, 2005; Villion & Moineau, 2009; Vejborg *et al.*, 2010; Luo *et al.*, 2012).

During a study of the microbiota associated with the caecum of patients with Irritable Bowel Syndrome and healthy controls, attempts were made to isolate bacterium–phage combinations from samples of caecal effluent. Herein, we report the isolation and characterization of a *Klebsiella pneumoniae* subsp. *pneumoniae*–phage combination from the caecal effluent of a healthy woman, and the implications of our findings in relation to

gastrointestinal microbial ecology and the potential of the human gut as a source of phages with therapeutic uses. Previous studies describing the isolation of lytic phages against *K. pneumoniae* have reported recovery of these entities from wastewater, seawater, sewage and sewage-contaminated water samples, but never directly from gastrointestinal contents (Souza, Ginoza & Haight, 1972; Kumari, Harjai & Chhibber, 2009; Kumari, Harjai & Chhibber, 2010a; Drulis-Kawa *et al.*, 2011; Hung *et al.*, 2011; Cui *et al.*, 2012; Hsu *et al.*, 2013; Karumidze *et al.*, 2013; Jamal *et al.*, 2015).

## MATERIALS AND METHODS

**Ethical approval and patient information.** Ethical approval to collect caecal effluent from patients was obtained from St Thomas' Hospital Research Ethics Committee (06/Q0702/74) covering Guy's and St Thomas' Hospitals, and transferred by agreement to London Bridge Hospital. Patients provided written consent to provide samples. The caecal effluent was collected as described by Hoyles *et al.* (2014) from a 31-year-old female who showed no evidence of colonic abnormalities or disease as based on a routine colonoscopic examination.

**Sample processing, and isolation of bacteria and phages from caecal effluent.** The sample was transported to the University of Reading under anaerobic conditions (in a gas jar with an anaerobic gas-generating pack; Oxoid Ltd) and on ice, where it was processed within 3 h of collection. The sample was transferred to an anaerobic cabinet (Whitley MG1000 anaerobic workstation, DW Scientific; gas composition 80 % N<sub>2</sub>, 10 % H<sub>2</sub>, 10 % CO<sub>2</sub>) and mixed well by shaking. An aliquot (1 ml) of the sample was diluted with 9 ml sterile, anaerobic half-strength

peptone water (Oxoid) in a sterile universal bottle containing 2-mm glass beads. A dilution series ( $10^{-1}$  to  $10^{-6}$ ) was prepared from the homogenate in sterile, anaerobic half-strength peptone water (Oxoid). Aliquots (20  $\mu$ l) were plated in triplicate onto fastidious anaerobic agar (BIOTEC laboratories, Ipswich, UK) containing 5 % laked horse blood. Bacteria were incubated anaerobically for 5 days at 37 °C, and then enumerated. Ten colonies were selected randomly, streaked to purity, and stored on Microbank cryogenic beads (Prolab Diagnostics) at –70 °C.

The remaining neat caecal effluent (~25 ml) was processed as described by Hoyles *et al.* (2014). Briefly, the sample was diluted 1:4 (v/v) with sterile TBT buffer (100 mM Tris/HCl, pH 8.0; 100 mM NaCl; 10 mM  $\text{MgCl}_2 \cdot 6\text{H}_2\text{O}$  filtered through a 0.1 mm pore size filter prior to autoclaving). The sample was homogenized in a stomacher (Stomacher 400 Lab System; Seward) for 2 min at ‘high’ speed, and then placed on ice for 2 h to allow detachment of phages from and settlement of particulate material. The homogenate was centrifuged at 11,180 *g* for 30 min at 4 °C, and the supernatant passed through a sterile 0.45  $\mu$ m cellulose acetate filter (Millipore). The filtrate was stored at 4 °C until used in spot assays.

**Identification of isolated bacteria.** DNA was isolated from bacteria using InstaGene Matrix (Bio-Rad) according to the manufacturer’s instructions. Partial (~600 nt) 16S rRNA gene sequences were obtained for the isolates via the University of Reading’s Biocentre. Nearest relatives of isolates were determined using EzTaxon (Chun *et al.*, 2007). The identity of strain L4-FAA5, tentatively identified as *Klebsiella pneumoniae* on the basis of its 16S rRNA gene sequence, was confirmed using a species-specific PCR that detects the 16S–23S internal transcribed spacer unit of *K. pneumoniae* as well as capsular-type-specific, and virulence gene targets (Turton *et al.*, 2010). Malonate and Voges–Proskauer reactions were positive indicating



that the isolate was subsp. *pneumoniae* (rather than subsp. *ozaenae*) (Turton *et al.*, 2010). Typing was carried out by VNTR analysis at loci A, E, H, J, K and D (Turton *et al.*, 2010) and an additional three loci (N1, N2 and N4). Primers, repeat sizes and flanking sequence sizes for the additional loci were: N1F 5'-CATCAGGTGCAAGATTCCA-3' and N1R 5'-TGAGCGATTGCTGGCCTA-3', 116 bp repeat with a 107 bp flanking sequence; N2F 5'-GATGCGGCAAGCACCAC-3' and N2R 5'-ACGCCCTGACCATTATGC-3', 57 bp repeat with a 109 bp flanking sequence; and N4F 5'-GTGCGGTGATTGTGATGG-3' and N4R 5'-CTGACAACGTCGATGTGG-3', 67 bp repeat with a 119 bp flanking sequence.

**Screening of bacteria against filtered caecal effluent.** *K. pneumoniae* strains isolated from the caecum were grown to OD<sub>660</sub> ~0.4 in tryptone soya broth (Oxoid Ltd), and used in spot assays as follows. An aliquot of culture (200 µl) was inoculated into 3 ml tryptone soya broth containing 0.3 % (w/v) agarose (SeaKem LE agarose; Lonza Rockland) that had been heat-treated by microwaving and dispensed aseptically from a larger volume before cooling to 48 °C. The overlays containing bacteria were poured over 20 ml solid agar plates of autoclaved tryptone soya agar (Oxoid Ltd). Once the agar had solidified, a 10 µl spot of filtered caecal effluent was applied to the overlays, and the plates were incubated overnight at 37 °C in the anaerobic cabinet. Identical plaques were observed on all *K. pneumoniae* isolates; strain L4-FAA5 was used to propagate and purify an isolated phage in tryptone soya broth or reinforced clostridial and nutrient media (Oxoid Ltd). Neither calcium nor magnesium was added to media during propagations.

The ability of the purified phage to infect a panel of *K. pneumoniae* subsp. *pneumoniae* clinical isolates (Table 1) was determined using the spot assay as described above, except that nutrient agar plates were used for the base. Strain L4-FAA5 was used as a positive control.

**Purification of phage particles.** A 100-ml culture of strain L4-FAA5 was grown to mid-exponential phase, inoculated with 100 µl of phage stock ( $\sim 10^{10}$  pfu/ml) and incubated until the medium became clear ( $\sim 2$  h after infection). The lysate was centrifuged at 4,500 *g* for 10 min, then passed through a 0.45 µm cellulose acetate filter. PEG 8000 (10 %, w/v) and NaCl (6 %, w/v) were added to the filtrate, and mixed until all particulates had dissolved. The sample was left at 4 °C for 16 h, then centrifuged at 4,500 *g* for 30 min. The supernatant was removed and the pellet resuspended in 4 ml TBT buffer. A CsCl block gradient was formed with 5 M and 3 M CsCl, both prepared in TBT buffer and samples were placed on top of this gradient and subjected to centrifugation at 100,000 *g* for 2 h at 4 °C. The band containing  $\sim 2$  ml of TBT buffer and the phages was drawn out of the tube and the purified sample was transferred to dialysis tubing (4,000–6,000 Da cut-off), and dialysed against TBT buffer overnight. The TBT buffer was replaced with fresh TBT buffer, and the sample dialysed for a further 4 h. The purified phage particles were removed from the dialysis tubing and stored at 4 °C.

**Transmission electron microscopy.** This was done as described by Hoyles *et al.* (2014).

**Extraction of DNA from phage KLPN1 and restriction enzyme profiles.** An aliquot (250 µl) of the purified phage particle stock was treated with DNase (2 U) for 30 min at 37 °C, then heated for 10 min at 80 °C. Two phenol/chloroform extractions were performed, before the DNA

was precipitated using 1/10 volume of 3 M sodium acetate (pH 4.8) and 2 volumes of ice-cold ethanol. After air-drying, DNA was resuspended in 100 µl TE buffer. Restriction profiles were obtained for phage KLPN1 using the enzymes EcoRV and HaeIII (SuRE/Cut; Roche Applied Science): restriction digests contained 3 µl H<sub>2</sub>O, 1 µl enzyme, 1 µl enzyme buffer and 5 µl DNA, and were incubated for 3 h at 37 °C before being run on a 0.8 % (w/v) agarose gel (1 h, 75 V) and stained with ethidium bromide.

**Whole-genome sequencing and annotation of the phage genome.** DNA (5 µg) was extracted and concentration verified by Nanodrop quantification. Confirmatory molecular identification tests were also conducted on the DNA extract prior to shipment to the contract sequencing facility (Macrogen Inc., Korea). Eighty-fold sequencing coverage was obtained using pyrosequencing technology on a 454 FLX instrument. The individual sequence files generated by the 454 FLX instrument were assembled with GSAssembler (454 Lifesciences, Branford, CT) to generate a consensus sequence. To ensure correct assembly and resolve any remaining base-conflicts, short segments of the genome were amplified by PCR and the generated amplicons were then subjected to Sanger sequencing (MWG, Ebersberg, Germany). Open reading frames (ORFs) were automatically predicted using Genemark (Besemer & Borodovsky, 1999). General feature format (gff) files were generated for the predicted phage proteome (retaining proteins with a minimum size of 30 amino acids) and visualized using the annotation software Artemis v10.0 (Rutherford *et al.*, 2000). ORF boundaries were verified and, where required, adjusted by manual inspection of Shine–Delgarno sequences. BLASTP (Altschul *et al.*, 1990) was used to provide preliminary functional annotation data, and to carry out a comparative analysis of KLPN1 with previously sequenced *Klebsiella* phages at the protein level (Altschul *et al.*, 1990).

To improve genome annotations/predictions, all proteins encoded by ORFs in the genome sequence of KLPN1 were searched against InterProScan (<http://www.ebi.ac.uk/interpro/>). HHpred (<http://toolkit.tuebingen.mpg.de/hhpred>) searches were done to identify domains associated with depolymerase activity.

**Screening virome datasets for phage sequences related to KLPN1.** Fasta files associated with public virome datasets were downloaded from the METAVIR web server (<http://metavir-meb.univ-bpclermont.fr>; Roux *et al.*, 2011) on 31 March 2015 (Supplementary Table 1). Each fasta file was used to create a BLAST database, against which the genome sequence of phage KLPN1 was searched using BLASTN.

## RESULTS

### Isolation and characterization of bacteria isolated from caecal effluent

On fastidious anaerobe agar,  $2.22 \times 10^8 \pm 5.30 \times 10^7$  ( $n=3$  replica plating) bacteria were isolated per millilitre of caecal effluent sample ( $\log_{10} 8.35 \pm 7.72$  bacteria/ml caecal effluent). Ten colonies were randomly selected from one of the triplicate plates used to enumerate the bacteria, and streaked to purity. On the basis of 16S rRNA gene sequence analysis (EzTaxon), isolates represented *Klebsiella pneumoniae* ( $n=5$ ), *Bacteroides vulgatus* ( $n=2$ ), *Bacteroides massiliensis* ( $n=1$ ), a novel member of the order *Erysipelotrichales* distantly related to [*Clostridium*] *innocuum* ( $n=1$ ), and *Haemophilus parainfluenzae* ( $n=1$ ).

It is widely accepted that identification of members of the family *Enterobacteriaceae* is difficult on the basis of 16S rRNA gene sequence data alone; therefore, one of the strains

identified as *K. pneumoniae*, L4-FAA5, was characterized using the PCR-based methods of Turton *et al.* (2010). The isolate was found to be a strain of *K. pneumoniae* subsp. *pneumoniae*, capsular type K2, *rmpA*<sup>+</sup>. Its VNTR profile was unique among the clinical isolates tested and on the wider database of clinical isolates held by Public Health England – Colindale.

#### Screening of filter-sterilized caecal effluent against bacteria to isolate phages

The *K. pneumoniae* isolates were used in spot assays with the caecum filtrate, which was free of bacteria (as verified by Gram-stained smear and plating on nutrient agar; not shown). Phages infecting these isolates were initially identified in the caecal effluent by spotting 10 µl aliquots of filtered caecal effluent onto TSA overlays containing 200 µl of a given culture in the exponential phase of growth. Plaques identical to those shown in Fig. 1(a) were observed with all *K. pneumoniae* isolates in the spot assays, and phages were present at  $2 \times 10^5 \pm 2.65 \times 10^3$  ( $n=3$ ) pfu/ml caecal effluent. Clear plaques of 2 mm diameter were visible within 3 h of spotting onto an agar overlay. After prolonged incubation, the area around the plaques developed opaque haloes presumably caused by depolymerase activity, which increased in size over the course of 4 days, although the central clear area of the plaques remained 2 mm in diameter (Fig. 1b). This phenomenon has been observed previously for lytic phages of the families *Siphoviridae*, *Podoviridae* and *Myoviridae* against *K. pneumoniae*, and is associated with degradation of capsular polysaccharides (Geyer *et al.*, 1983; Verma, Harjai & Chhibber, 2009; Hsu *et al.*, 2013; Lin *et al.*, 2014a; Shang *et al.*, 2015). The non-*Klebsiella* isolates were not screened against the caecum filtrate for phages.

Strain L4-FAA5 was used as the host bacterium on which to isolate and propagate one phage (which we named KLPN1) to purity. KLPN1 infected all *K. pneumoniae* isolates recovered from the filter-sterilized caecal effluent.

The ability of phage KLPN1 to infect a panel of *K. pneumoniae* subsp. *pneumoniae* clinical isolates was determined (Table 1), which revealed that all K2 strains tested (including the type strain) were sensitive to this phage, though KLPN1 did not infect any of the other tested strains belonging to other capsular types. VNTR analysis showed that the six K2 isolates in the panel represented five, distinct strains, suggesting a wide susceptibility to the phage among isolates of this capsular type. In addition, it did not exhibit depolymerase activity with any of the clinical K2 isolates.

### Characterization of phage KLPN1

Phage KLPN1 is chloroform-resistant. In addition, it displayed stability to prolonged storage in TSB at 4 °C: after 6 and 18 months' storage, titres for the phage were still  $10^{10}$  pfu/ml, comparable with the original stock. Transmission electron microscopy revealed the isometric-headed phage to possess a capsid of  $\sim 62.7 \pm 2.3$  nm ( $n=30$ ) in diameter with a long non-contractile tail of  $\sim 164.4 \pm 3.0$  nm ( $n=29$ ), thus indicating that this phage is a member of the family *Siphoviridae* (Fig. 2). Notably, the base-plate structure was unusual with a distinct central tail fibre [length  $33.4 \pm 1.7$  nm ( $n=43$ )] with apparently three elongated spherical structures [length,  $13.2 \pm 1.3$  nm ( $n=43$ ); width,  $6.9 \pm 0.7$  nm ( $n=48$ )] loosely associated with the central regions of the tail fibre. This unique base-plate structures resembles a rosette with three leaves, and can be observed in all five micrographs shown in Figure 2. A similar structure has been described for Rtp, a lytic phage of *Escherichia coli* (Wietzorrek *et al.*, 2006), with which KLPN1

shares some sequence identity (discussed below). It is also visible in electron micrographs of phage  $\phi$ 28, which infects *K. pneumoniae* capsular type K28 (Geyer *et al.*, 1983).

It was straightforward to isolate high-quality DNA from phage KLPN1. Heating an aliquot of CsCl-purified, DNase-/RNase-treated sample at 80 °C for 10 min followed by phenol/chloroform/isoamyl alcohol extractions and ethanol precipitation gave large quantities of high-quality DNA that was used for restriction digests (not shown) and genome sequencing. The estimated genome size of KLPN1 based on restriction digests with EcoRV or HaeIII was ~45 kbp, which was an underestimation of the genome size of 49,037 bp as determined by sequencing (see below).

### Sequence analysis of KLPN1

The genome of KLPN1 was 49,037 bp with a G+C content of 50.53 %, similar to previously sequenced *Klebsiella Siphoviridae* phages such as KP36 (Table 2). Initial genome annotation was performed using Genemark (Besemer & Borodovsky, 1999), from which a gff file was generated to allow visualisation of the predicted ORFs in Artemis v10.0 (Rutherford *et al.*, 2000). Each ORF with a minimum amino acid content of 30, a start and stop codon as well as a ribosomal-binding site was retained (Table 3). The genome of KLPN1 was predicted to encompass 73 ORFs divided into four clusters, two rightward and two leftward (Fig. 3, Table 3). Of the 73 predicted ORFs, 23 were assigned a function with the remainder representing hypothetical proteins with no assignable function (Table 3). BLAST analysis of the complete nucleotide sequence indicated that KLPN1 is closely related to the *Klebsiella* phages KP36 (95 % identity across 86 % of the genome; Kęsik-Szeloch *et al.*, 2013), F20 (84 % identity across 82 % of the genome, GenBank accession no. JN672684; Mishra, Choi & Kang, 2012) and phage

1513 (95 % identity across 85 % of the genome, GenBank accession no. KP658157; Cao *et al.*, 2015). Furthermore, partial identity was observed against *Shigella* phage Shf11 as well as enterobacterial phages T1 (Roberts, Martin & Kropinski, 2004) and RTP (Wietzorrek *et al.*, 2006) (GenBank accession numbers HM035024, AY216660 and AM156909, respectively). A comparative analysis of KLPN1 was performed against both known members (KP36, F20) of the genus “Kp36likevirus” (Niu *et al.*, 2014; Table 3, Fig. 3). For completion, KLPN1 was also compared with previously sequenced *Klebsiella* phages (Table 2). KLPN1 was shown not to share detectable homology with *Klebsiella* phages belonging to the family *Podoviridae* or *Myoviridae*. Based on the amino acid percentage identities presented in Table 3, the genomes of KLPN1 and related phages were divided into functional conserved modules: packaging, phage particle morphogenesis and DNA replication (Fig. 3, Table 3). Sections of the KLPN1 genome were shown to exhibit homology to the *Siphoviridae* phage phiKO2 genome, although such homology was confined to the tail morphogenesis region and one hypothetical protein (Table 3). Of the 73 predicted ORFs, only three appeared unique to KLPN1: two genes encoding hypothetical proteins located at the 5' end of the genome and a putative homing endonuclease-gene positioned in the capsid morphogenesis module (Table 3).

Based on sequence homology to ORF33 (encoding the host-specificity J protein; InterPro IPR021034) of phage T1, the phage receptor-binding protein of KLPN1 was predicted to be encoded by ORF43. The deduced ORF43 protein was found to exhibit similarity to fibronectin type III domain-containing protein, and potentially encodes the depolymerase whose effect was observed on the phage assay plates (Fig. 1). However, a HHpred search with the protein sequence encoded by this ORF failed to detect any domains associated with enzymes (such as glycanases, deacetylases and lyases) associated with depolymerase activity of *Klebsiella* lytic



phages (Geyer *et al.*, 1983). The protein encoded by ORF34 of phage NTUH-K2044-K1-1 has proven depolymerase activity associated with pectate lyase (Lin *et al.*, 2014a); a HHpred search confirmed the protein encoded by this ORF has a lyase/polygalacturonase domain (1ru4\_A pectate lyase, 94.3 % probability of true positive, E-value 0.055, P-value  $1.6 \times 10^{-6}$ ; 1bhe\_A PEHA, polygalacturonase, 90.1 % probability of true positive, E-value 13, P-value 0.00038). ORF96 of phage 0507-KN2-1 also encodes proven depolymerase activity (Hsu *et al.*, 2013). A HHpred search demonstrated the protein encoded by this ORF has an acetylneuraminidase domain (3gw6\_A endo-*N*-acetylneuraminidase, 99.8 % probability of true positive, E-value  $1 \times 10^{-19}$ , P-value  $2.9 \times 10^{-24}$ ). The whole-genome sequence of phage P13 cannot be retrieved from GenBank; however, on the basis of a PSI-BLAST search conducted by Shang *et al.* (2015), genes 49 and 50 of phage P13 are predicted to encode the exopolysaccharide depolymerase, but no further substrate/functional information is available. HHpred searches of all proteins encoded by KLPN1 showed that ORF34 and ORF35 encode an endo-*N*-acetylneuraminidase/endosialidase domain (Table 4). Consequently, we predict ORF34 and/or ORF35 encode the depolymerase activity of phage KLPN1. Further work will be required to confirm our hypothesis.

The proteins encoded by ORF36 and ORF36.1 are predicted to be two chaperones, analogous to gpG and gpGT required for phage  $\lambda$  tail assembly (Xu, Hendrix & Duda, 2013). These ORFs are believed to keep the tail tape measure protein (TMP) soluble and to recruit the major tail protein subunits, both essential processes for tail assembly. ORF36 encodes the short chaperone (gpG), while a programmed -1 translational frameshift facilitates a translational fusion between the products of ORF36 and ORF36.1 so as to form the long chaperone (gpGT) (hence the lack of a ribosome-binding site for ORF36.1) (Fig. 4). A BLASTP search of the predicted

213 aa fusion protein showed it shares 47 % identity (E-value  $3 \times 10^{-56}$ ) with the tape measure chaperone of the *Citrobacter Siphoviridae* phage Stevie, reported to have a conserved translational frameshift (Shaw *et al.*, 2015; Fig. 4).

The genome sequence of KLPN1 was subjected to BLASTN searches against all publicly available virome sequence data held by METAVIR [51,992,208 sequence reads associated with 70 projects from a range of habitats, including human faeces (Reyes *et al.*, 2010; Kim *et al.*, 2011; Minot *et al.*, 2011, 2013); Supplementary Table 1]. No hits corresponding to KLPN1 were found among these publicly available datasets. However, using InterProScan, the protein sequence encoded by ORF64 was found to belong to the family ‘Protein of unknown function DUF3987’, representing uncharacterized human-gut-microbiome-specific proteins (Ellrott *et al.*, 2010; Table 3).

## DISCUSSION

*K. pneumoniae* subsp. *pneumoniae* is an enteric bacterium and important nosocomial and community-acquired opportunistic pathogen, causing pneumonia, and wound, burn, urinary tract and blood infections. There are 79 recognized capsular types of *K. pneumoniae* subsp. *pneumoniae*, with capsular types K1, K2, K5, K54 and K57 most frequently associated with invasive disease or pathogenicity; capsular type K20 is much rarer, though there is regional variability in the predominant clinically relevant capsular types (Turton *et al.*, 2010; Pan *et al.*, 2013; Hsu *et al.*, 2013). It has been suggested that the majority of *K. pneumoniae*-associated liver infections are preceded by colonization of the gastrointestinal tract, and one study has demonstrated familial spread of a virulent clone of *K. pneumoniae* causing liver disease (Harada

et al., 2011; Lin et al., 2012). Using caecal effluent recovered from a healthy woman, we have isolated a capsular type K2 *rmpA*<sup>+</sup> strain (L4-FAA5) of *K. pneumoniae* subsp. *pneumoniae*. After K1, K2 strains are most frequently associated with pyogenic liver abscesses and frequently associated with community-acquired pneumonia (Lin et al., 2014b). K1 and K2 strains, along with the *rmpA* (regulator of mucoid phenotype A) gene, are associated with hypermucoviscosity and virulence. A study examining K1 and K2 strains of *K. pneumoniae* in 43 Taiwanese patients with liver abscesses showed, using pulsed-field gel electrophoresis (PFGE), that 17 randomly selected pairs of patient faecal or saliva and abscess isolates allowed differentiation of patients based on the PFGE profiles of their isolates. The abscess isolates had PFGE profiles identical, or closely related to, those of faecal or saliva isolates from the same patient (Fung et al., 2012). The similarity between each patient's faecal and abscess PFGE profiles led Fung et al. (2012) to suggest that the patients' infections arose from bacteria originating in the gut microbiota. Our isolation of a *K. pneumoniae* strain with virulence traits from the human caecum supports the assertion that the human gut microbiota is a source of potentially infectious *K. pneumoniae*. Limited data are available on the carriage and diversity of gut/faecal *K. pneumoniae*. A study on healthy Chinese adults in Chinese territories and overseas showed between 18.8 and 87.7 % faecal carriage of *K. pneumoniae*, with individuals in Malaysia (64/73) and Taiwan (150/200) showing the highest carriage rates and those in Japan (6/32) showing the lowest (Lin et al., 2012). Isolates were tested with antisera for capsular types K1–K74 and K80–82: K1 and K2 isolates accounted for ~10 % of isolates in all countries, at least one representative of each capsular type was detected in the study and non-typable (11–88 %) isolates were reported for 7/8 countries (Lin et al., 2012). The high carriage of *K. pneumoniae* in Taiwan is thought to contribute to the high incidence of liver abscess disease seen in the country (Fung et al., 2012).

As with other nosocomial opportunistic pathogens, broad-spectrum antibiotic resistance is a feature of *K. pneumoniae* subsp. *pneumoniae* and limits treatment options (Cantón *et al.*, 2012). Therefore, identification of alternative treatment therapies or adjuncts to existing therapies for infections associated with this organism is of utmost importance. Phages against *K. pneumoniae* subsp. *pneumoniae* have been used to successfully treat *K. pneumoniae* infections in animal models of sepsis, pneumonia, burn wounds and liver disease, without causing apparent harm to animals (Bogovazova, Voroshilova & Bondarenko, 1991; Malik & Chhibber, 2009; Chhibber *et al.*, 2010; Kumari, Harjai & Chhibber, 2009; Kumari, Harjai & Chhibber, 2010b; Hung *et al.*, 2011). The number of known lytic phages that infect *K. pneumoniae* remains small and their range is limited to a small number of capsular types (though phenotypic information on strains is absent from the majority of publications on *K. pneumoniae* phages). Given the large number of phages present in faeces and caecal effluent (Hoyles *et al.*, 2014), and because *K. pneumoniae* subsp. *pneumoniae* is a member of the human gut microbiota, we were keen to exploit this environment as a source of phages with potential therapeutic applications. We isolated from caecal effluent a phage (named KLPN1) that infects *K. pneumoniae* subsp. *pneumoniae* L4-FAA5 and K2 clinical isolates of *K. pneumoniae* subsp. *pneumoniae* (Table 1). Phage KLPN1 does not infect non-K2 clinical isolates (Table 1). To the best of our knowledge, this is the first report of the isolation of a bacterium–phage combination from the human caecum.

To date, only eight phages infecting the K2 capsular type of *K. pneumoniae* have been reported (Bogovazova, Voroshilova & Bondarenko, 1991; Malik & Chhibber, 2009; Chhibber *et al.*, 2010; Kumari, Harjai & Chhibber, 2010b; Hung *et al.*, 2011). Several *Podoviridae* were isolated on *K. pneumoniae* B5055 (assumed to be derived from NCTC 5055) and tested as therapeutic agents [Kpn5, Kpn12, Kpn13, Kpn17, Kpn22 (individually and in cocktail) and

KØ1] in B5055-induced burn-wound infections in mice (Kumari, Harjai & Chhibber, 2009; Kumari, Harjai & Chhibber, 2010a; Kumari, Harjai & Chhibber, 2010b; Malik & Chhibber, 2009). Phage SS (*Podoviridae*) was isolated on B5055 and used to treat lobar pneumonia caused by the same strain in mice (Chhibber *et al.*, 2010). Phage φNK5 (*Podoviridae*) was isolated from sewage on *K. pneumoniae* NK-5, isolated from a patient with a primary liver abscess and septicemia (Hung *et al.*, 2011). The same bacterial strain was used to induce liver abscesses and bacteraemia in mice, which were successfully treated with φNK5. None of the aforementioned phages has been tested against a range of clinical *K. pneumoniae* isolates. Therefore, it is difficult to assess how useful they would be in treatment of a wide range of clinical infections, especially when similar infections can be caused by different capsular types of *K. pneumoniae* (e.g. Table 1). We can state that KLPN1 has potential for treating K2-associated infections, but note that differences in lytic infection were observed between the caecal isolate and the clinical isolates: KLPN1 infected the caecal isolate and exhibited depolymerase activity that was absent with the clinical K2 isolates. Further investigations may reveal that its infection kinetics differ between K2 strains.

Hung *et al.* (2011) demonstrated the generation of phage-insensitive mutants after 6 and 12 h co-cultures of NK-5/φNK5, with these mutants lacking the hypermucoviscosity phenotype of NK-5. On solid media, phage-insensitive mutants of *K. pneumoniae* L4-FAA5 were routinely observed after 48 h incubation with phage KLPN1. Whether mutants are generated more quickly in liquid culture remains to be determined, as does the nature of the mutations that allow them to escape lytic infection with KLPN1. Does solid media act as a spatial refuge (Mills *et al.*, 2013) for sensitive bacteria, delaying the appearance of insensitive mutants?

It is predicted that many members of the human gut microbiota are embedded in biofilms, and phages may contribute to cell lysis in these ecological niches (Mills *et al.*, 2013). The microbiota of the human caecum resides in a highly mucoid biofilm (Randal Bollinger *et al.*, 2007). Phage KLPN1 exhibits depolymerase activity on *K. pneumoniae* L4-FAA5, which may facilitate the movement of the phage within the caecal biofilm. It has been demonstrated that phages can diffuse within biofilms, be immobilized, amplified and released after a lytic cycle in these environments. They may also potentially interact with their specific binding sites on bacteria, even in the absence of lytic activity (Mills *et al.*, 2013). Further work is needed to understand interactions between *K. pneumoniae* L4-FAA5 and phage KLPN1 in single- and multi-strain biofilm systems, and to determine whether the “spatial refuge hypothesis” (Mills *et al.*, 2013) holds for the caecal microbiota, preventing the extinction of all sensitive bacteria within the biofilm.

Following whole-genome sequencing and annotation, KLPN1 was found to encompass 73 ORFs and, based on its sequence homology to *Klebsiella* phages KP36 and F20, it is evident that KLPN1 is a member of the family *Siphoviridae*, subfamily *Tunavirinae*, and would become the third member of the genus “Kp36likevirus” (Niu *et al.*, 2014). In addition, based on our sequence analyses phage 1513 (a *Siphoviridae* that infects a multidrug-resistant *K. pneumoniae* strain isolated from a patient with pneumonia; Cao *et al.*, 2015) can also be added to this genus, bringing the total number of members to four. This classification would be consistent with the morphological appearance of KLPN1, which has a capsid of 64 nm as well as rosette-like or propeller tail tip, a finding also observed for phages  $\phi$ 28, T1 and RTP (Geyer *et al.*, 1983; Wietzorrek *et al.*, 2006). Unsurprisingly, KLPN1 shares no sequence homology with *Klebsiella* phages belonging to the families *Myoviridae* or *Podoviridae*; however, some similarities to

*Siphoviridae* phage phiKO2 were observed, but these were confined to the tail morphogenesis region and a hypothetical protein. ORF60 and ORF61 are predicted to encode holin (which destroys the cytoplasmic membrane) and endolysin (which degrades peptidoglycan), respectively. These gene products have antibacterial properties that can be used in phage-associated therapies (Viertel, Ritter & Horz, 2014); therefore, further characterization of the proteins encoded by these ORFs is required.

## CONCLUSIONS

We isolated a *K. pneumoniae* subsp. *pneumoniae*–phage combination from the human caecum, and have characterized its lytic properties against a panel of *K. pneumoniae* subsp. *pneumoniae* clinical isolates. Phage KLPN1 infects capsular type K2 isolates, and may have applications in treating a range of K2-associated infections. We have, therefore, demonstrated the gut microbiota as a source of clinically relevant phages. Whole-genome sequence analysis of KLPN1 revealed the phage to encode proteins that have potential applications in phage-associated therapies. Characterization of these gene products, or genetically modified variants, is required to determine their usefulness.

## ACKNOWLEDGEMENTS

H.N. and K.J.H. acknowledge the technical assistance of Angela Back in sample preparation for electron microscopy.

## REFERENCES

- Altschul SF, Gish W, Miller W, Myers EW, Lipman DJ. 1990. Basic local alignment search tool. *Journal of Molecular Biology* 215:403–410.
- Besemer J, Borodovsky M. 1999. Heuristic approach to deriving models for gene finding. *Nucleic Acids Research* 27:3911–3920.
- Bogovazova GG, Voroshilova NN, Bondarenko VM. 1991. The efficacy of *Klebsiella pneumoniae* bacteriophage in the therapy of experimental *Klebsiella* infection. *Zhurnal Mikrobiologii Epidemiologii i Immunobiologii* 4:5–8.
- Breitbart M, Hewson I, Felts B, Mahaffy JM, Nulton J, Salamon P, Rohwer F. 2003. Metagenomic analyses of an uncultured viral community from human feces. *Journal of Bacteriology* 185:6220–6223.
- Breitbart M, Haynes M, Kelley S, Angly F, Edwards RA, Felts B, Mahaffy JM, Mueller J, Nulton J, Rayhawk S, Rodriguez-Brito B, Salamon P, Rohwer F. 2008. Viral diversity and dynamics in an infant gut. *Research in Microbiology* 159:367–373.
- Cao F, Wang X, Wang L, Li Z, Che J, Wang L, Li X, Cao Z, Zhang J, Jin L, Xu Y. 2015. Evaluation of the efficacy of a bacteriophage in the treatment of pneumonia induced by multidrug resistance *Klebsiella pneumoniae* in mice. *BioMed Research International* 2015:752930. doi: 10.1155/2015/752930.
- Cantón R, Akóva M, Carmeli Y, Giske CG, Glupczynski Y, Gniadkowski M, Livermore DM, Miriagou V, Naas T, Rossolini GM, Samuelsen Ø, Seifert H, Woodford N, Nordmann P, European Network on Carbapenemases. 2012. Rapid evolution and spread of carbapenemases among *Enterobacteriaceae* in Europe. *Clinical Microbiology and Infection* 18:413–431.



504 Carrer A, Poirel L, Eraksoy H, Cagatay AA, Badur S, Nordmann P. 2008. Spread of OXA-48-  
505 positive carbapenem-resistant *Klebsiella pneumoniae* isolates in Istanbul, Turkey. *Antimicrobial*  
506 *Agents and Chemotherapy* 52:2950–2954.

507 Casjens SR, Gilcrease EB, Huang WM, Bunny KL, Pedulla ML, Ford ME, Houtz JM, Hatfull  
508 GF, Hendrix RW. 2004. The pKO2 linear plasmid prophage of *Klebsiella oxytoca*. *Journal of*  
509 *Bacteriology* 186:1818–1832.

510 Chun J, Lee J-H, Jung Y, Kim M, Kim S, Kim BK, Lim YW. 2007. EzTaxon: a web-based tool  
511 for the identification of prokaryotes based on 16S ribosomal gene sequences. *International*  
512 *Journal of Systematic and Evolutionary Microbiology* 57:2259–2261.

513 Cui Z, Shen W, Wang Z, Zhang H, Me R, Wang Y, Zeng L, Zhu Y, Qin J, He P, Guo X. 2012.  
514 Complete genome sequence of *Klebsiella pneumoniae* phage JD001. *Journal of Virology*  
515 86:13843.

516 Drulis-Kawa Z, Mackiewicz P, Kęsik-Szeloch A, Maciaszczyk-Dziubinska E, Weber-  
517 Dąbrowska B, Dorotkiewicz-Jach A, Augustyniak D, Majkowska-Skrobek G, Bocier T, Empel J,  
518 Kropinski AM. 2011. Isolation and characterisation of KP34 – a novel  $\phi$ KMV-like  
519 bacteriophage for *Klebsiella pneumoniae*. *Applied Microbiology and Biotechnology* 90:1333–  
520 1345.

521 Ellrott K, Jaroszewski L, Li W, Wooley JC, Godzik A. 2010. Expansion of the protein repertoire  
522 in newly explored environments: human gut microbiome specific protein families. *PLoS*  
523 *Computational Biology* 6:e1000798.

524 Fung CP, Lin YT, Lin JC, Chen TL, Yeh KM, Chang FY, Chuang HC, Wu HS, Tseng CP, Siu  
525 LK. 2012. *Klebsiella pneumoniae* in gastrointestinal tract and pyogenic liver abscess. *Emerging*  
526 *Infectious Diseases* 18:1322–1325.

527 Geyer H, Himmelspach K, Kwiatkowski B, Schlecht S, Stirm S. 1983. Degradation of bacterial  
528 surface carbohydrates by virus-associated enzymes. *Pure and Applied Chemistry* 55:637–653.

529 Harada S, Tateda K, Mitsui H, Hattori Y, Okubo M, Kimura S, Sekigawa K, Kobayashi K,  
530 Hashimoto N, Itoyama S, Nakai T, Suzuki T, Ishii Y, Yamaguchi K. 2011. Familial spread of a  
531 virulent clone of *Klebsiella pneumoniae* causing primary liver abscess. *Journal of Clinical*  
532 *Microbiology* 49:2354–2356.

533 Hoyles L, McCartney AL, Neve H, Gibson GR, Sanderson JD, Heller KJ, van Sinderen D. 2014.  
534 Characterization of virus-like particles associated with the human faecal and caecal microbiota.  
535 *Research in Microbiology* 165:803–812.

536 Hsu CR, Lin TL, Pan YJ, Hsieh PF, Wang JT. 2013. Isolation of a bacteriophage specific for a  
537 new capsular type of *Klebsiella pneumoniae* and characterization of its polysaccharide  
538 depolymerase. *PLoS One* 8:e70092.

539 Hung CH, Kuo CF, Wang CH, Wu CM, Tsao N. 2011. Experimental phage therapy in treating  
540 *Klebsiella pneumoniae*-mediated liver abscesses and bacteremia in mice. *Antimicrobial Agents*  
541 *and Chemotherapy* 55:1358–1365.

542 Jamal M, Hussain T, Das CR, Andleeb S. 2015. Characterization of *Siphoviridae* phage Z and  
543 studying its efficacy against multi-drug resistant MDR *Klebsiella pneumoniae* planktonic cells  
544 and biofilm. *Journal of Medical Microbiology* 64:454-462.

545 Karumidze N, Kusradze Ia, Riggava S, Goderdzishvili M, Rajakumar K, Alavidze Z. 2013.  
546 Isolation and characterisation of lytic bacteriophages of *Klebsiella pneumoniae* and *Klebsiella*  
547 *oxytoca*. *Current Microbiology* 66:251–258.

548 Kęsik-Szeloch A, Drulis-Kawa Z, Weber-Dąbrowska B, Kassner J, Majkowska-Skrobek G,  
549 Augustyniak D, Lusiak-Szelachowska M, Zaczek M, Górski A, Kropinski A M. 2013.

550 Characterising the biology of novel lytic bacteriophages infecting multidrug resistant *Klebsiella*  
551 *pneumoniae*. *Virology Journal* 10:100.  
552 Kim MS, Park EJ, Roh SW, Bae JW. 2011. Diversity and abundance of single-stranded DNA  
553 viruses in human feces. *Applied and Environmental Microbiology* 77:8062–8070.  
554 Kumari S, Harjai K, Chhibber S. 2009. Efficacy of bacteriophage treatment in murine burn  
555 wound infection induced by *Klebsiella pneumoniae*. *Journal of Microbiology and Biotechnology*  
556 19:622–628.  
557 Kumari S, Harjai K, Chhibber S. 2010a. Isolation and characterization of *Klebsiella pneumoniae*  
558 specific bacteriophages from sewage samples. *Folia Microbiologica Praha* 55:221–227.  
559 Kumari S, Harjai K, Chhibber S. 2010b. Evidence to support the therapeutic potential of  
560 bacteriophage Kpn5 in burn wound infection caused by *Klebsiella pneumoniae* in BALB/c mice.  
561 *Journal of Microbiology and Biotechnology* 20:935–941.  
562 Lepage P, Colombet J, Marteau P, Sime-Ngando T, Doré J, Leclerc M. 2008. Dysbiosis in  
563 inflammatory bowel disease: a role for bacteriophages? *Gut* 57:424–425.  
564 Lin YT, Siu LK, Lin JC, Chen TL, Tseng CP, Yeh KM, Chang FY, Fung CP. 2012.  
565 Seroepidemiology of *Klebsiella pneumoniae* colonizing the intestinal tract of healthy Chinese  
566 and overseas Chinese adults in Asian countries. *BMC Microbiology* 12:13.  
567 Lin TL, Hsieh PF, Huang YT, Lee WC, Tsai YT, Su PA, Pan YJ, Hsu CR, Wu MC, Wang JT.  
568 2014a. Isolation of a bacteriophage and its depolymerase specific for K1 capsule of *Klebsiella*  
569 *pneumoniae*: implication in typing and treatment. *Journal of Infectious Diseases* 210:1734–1744.  
570 Lin JC, Koh TH, Lee N, Fung CP, Chang FY, Tsai YK, Ip M, Siu LK. 2014b. Genotypes and  
571 virulence in serotype K2 *Klebsiella pneumoniae* from liver abscess and non-infectious carriers in  
572 Hong Kong, Singapore and Taiwan. *Gut Pathogens* 6:21.

573 Luo CH, Chiou PY, Yang CY, Lin NT. 2012. Genome, integration, and transduction of a novel  
574 temperate phage of *Helicobacter pylori*. *Journal of Virology* 86:8781–8792.

575 Malik R, Chhibber S. 2009. Protection with bacteriophage KØ1 against fatal *Klebsiella*  
576 *pneumoniae*-induced burn wound infection in mice. *Journal of Microbiology Immunology and*  
577 *Infection* 42:134–140.

578 Mills S, Shanahan F, Stanton C, Hill C, Coffey A, Ross RP. 2013. Movers and shakers: influence  
579 of bacteriophages in shaping the mammalian gut microbiota. *Gut Microbes* 4:4–16.

580 Minot S, Sinha R, Chen J, Li H, Keilbaugh SA, Wu GD, Lewis JD, Bushman FD. 2011. The  
581 human gut virome: inter-individual variation and dynamic response to diet. *Genome Research*  
582 21:1616–1625.

583 Minot S, Bryson A, Chehoud C, Wu GD, Lewis JD, Bushman FD. 2013. Rapid evolution of the  
584 human gut virome. *Proceedings of the National Academy of Sciences U S A* 110:12450–12455.

585 Mishra CK, Choi TJ, Kang SC. 2012. Isolation and characterization of a bacteriophage F20  
586 virulent to *Enterobacter aerogenes*. *Journal of General Virology* 93:2310–2314.

587 Niu YD, McAllister TA, Nash JH, Kropinski AM, Stanford K. 2014. Four *Escherichia coli*  
588 O157:H7 phages: a new bacteriophage genus and taxonomic classification of T1-like phages.  
589 *PLoS One* 9:e100426.

590 Pan YJ, Lin TL, Chen YH, Hsu CR, Hsieh PF, Wu MC, Wang JT. 2013. Capsular types of  
591 *Klebsiella pneumoniae* revisited by *wzc* sequencing. *PLoS One* 8:e80670.

592 Pan YJ, Lin TL, Lin YT, Su PA, Chen, CT, Hsieh PF, Hsu CR, Chen CC, Hsieh YC, Wang JT.  
593 2015. Identification of capsular types in carbapenem-resistant *Klebsiella pneumoniae* strains by  
594 *wzc* sequencing and implications for capsule depolymerase treatment. *Antimicrobial Agents and*  
595 *Chemotherapy* 59:1038–1047.

596 Pell LG, Kanelis V, Donaldson LW, Howell PL, Davidson AR. 2009. The phage lambda major  
597 tail protein structure reveals a common evolution for long-tailed phages and the type VI bacterial  
598 secretion system. *Proceedings of the National Academy of Sciences U S A* 106:4160–4165.

599 Randal Bollinger R, Barbas AS, Bush EL, Lin SS, Parker W. 2007. Biofilms in the large bowel  
600 suggest an apparent function of the human vermiform appendix. *Journal of Theoretical Biology*  
601 249:826–831.

602 Reyes A, Haynes M, Hanson N, Angly FE, Heath AC, Rohwer F, Gordon JI. 2010. Viruses in  
603 the faecal microbiota of monozygotic twins and their mothers. *Nature* 466:334–338.

604 Reyes A, Semenkovich NP, Whiteson K, Rohwer F, Gordon JI. 2012. Going viral: next-  
605 generation sequencing applied to phage populations in the human gut. *Nature Reviews*  
606 *Microbiology* 10:607–617.

607 Roberts MD, Martin NL, Kropinski AM. 2004. The genome and proteome of coliphage T1.  
608 *Virology* 318:245–266.

609 Roux S, Faubladier M, Mahul A, Paulhe N, Bernard A, Debroas D, Enault F. 2011. Metavir: a  
610 web server dedicated to virome analysis. *Bioinformatics* 27:3074–3075.

611 Rutherford K, Parkhill J, Crook J, Horsnell T, Rice P, Rajandream MA, Barrell B. 2000.  
612 Artemis: sequence visualization and annotation. *Bioinformatics* 16:944–945.

613 Schulz EC, Neumann P, Gerardy-Schahn R, Sheldrick GM, Ficner R. 2010. Structure analysis of  
614 endosialidase NF at 0.98 Å resolution. *Acta Crystallographica section D Biological*  
615 *Crystallography* 66:176–180.

616 Shang A, Liu Y, Wang J, Mo Z, Li G, Mou H. 2015. Complete nucleotide sequence of *Klebsiella*  
617 phage P13 and prediction of an EPS depolymerase gene. *Virus Genes* 50:118–128.

618 Shaw JP, Aviles Medina CA, Chen Y, Luna AJ, Hernandez AC, Kutty Everett GF. 2015.

619 Complete genome of *Citrobacter freundii* siphophage Stevie. *Genome Announcements* DOI  
620 10.1128/genomeA.01434-14.

621 Šimoliūnas E, Kaliniene L, Truncaite L, Klausas V, Zajančauskaitė A, Meškys R. 2012. Genome  
622 of *Klebsiella* sp.-infecting bacteriophage vB\_KleM\_RaK2. *Journal of Virology* 86:5406.

623 Souza KA, Ginoza HS, Haight RD. 1972. Isolation of a polyvalent bacteriophage for *Escherichia*  
624 *coli*, *Klebsiella pneumoniae*, and *Aerobacter aerogenes*. *Journal of Virology* 9:851–856.

625 Turton JF, Perry C, Elgohari S, Hampton CV. 2010. PCR characterization and typing of  
626 *Klebsiella pneumoniae* using capsular type-specific, variable number tandem repeat and  
627 virulence gene targets. *Journal of Medical Microbiology* 59:541–547.

628 Vejborg RM, Friis C, Hancock V, Schembri MA, Klemm P. 2010. A virulent parent with  
629 probiotic progeny: comparative genomics of *Escherichia coli* strains CFT073, Nissle 1917 and  
630 ABU 83972. *Molecular Genetics and Genomics* 283:469–484.

631 Ventura M, Lee JH, Canchaya C, Zink R, Leahy S, Moreno-Munoz JA, O'Connell-Motherway  
632 M, Higgins D, Fitzgerald GF, O'Sullivan DJ, van Sinderen D. 2005. Prophage-like elements in  
633 bifidobacteria: insights from genomics, transcription, integration, distribution, and phylogenetic  
634 analysis. *Applied and Environmental Microbiology* 71:8692–8705.

635 Verma V, Harjai K, Chhibber S. 2009. Characterization of a T7-like lytic bacteriophage of  
636 *Klebsiella pneumoniae* B5055: a potential therapeutic agent. *Current Microbiology* 59:274–281.

637 Villion M, Moineau S. 2009. Bacteriophages of lactobacillus. *Frontiers in Biosciences*  
638 *Landmark Edition* 14:1661–1683.

639 Viertel TM, Ritter K, Horz HP. 2014. Viruses versus bacteria-novel approaches to phage therapy  
640 as a tool against multidrug-resistant pathogens. *Journal of Antimicrobial Chemotherapy*  
641 69:2326–2336.

642 Wagner J, Maksimovic J, Farries G, Sim WH, Bishop RF, Cameron DJ, Catto-Smith AG,  
643 Kirkwood CD. 2013. Bacteriophages in gut samples from pediatric Crohn's disease patients:  
644 metagenomic analysis using 454 pyrosequencing. *Inflammatory Bowel Diseases* 19:1598–1608.  
645 Wietzorrek A, Schwarz H, Herrmann C, Braun V. 2006. The genome of the novel phage Rtp,  
646 with a rosette-like tail tip, is homologous to the genome of phage T1. *Journal of Bacteriology*  
647 188:1419–1436.  
648 Wu LT, Chang SY, Yen MR, Yang TC, Tseng YH. 2007. Characterization of extended-host-  
649 range pseudo-T-even bacteriophage Kpp95 isolated on *Klebsiella pneumoniae*. *Applied and*  
650 *Environmental Microbiology* 73:2532–2340.  
651 Xu J, Hendrix RW, Duda RL. 2013. A balanced ratio of proteins from gene *G* and frameshift-  
652 extended gene *GT* is required for phage lambda tail assembly. *Journal of Molecular Biology*  
653 425:3476–3487.  
654

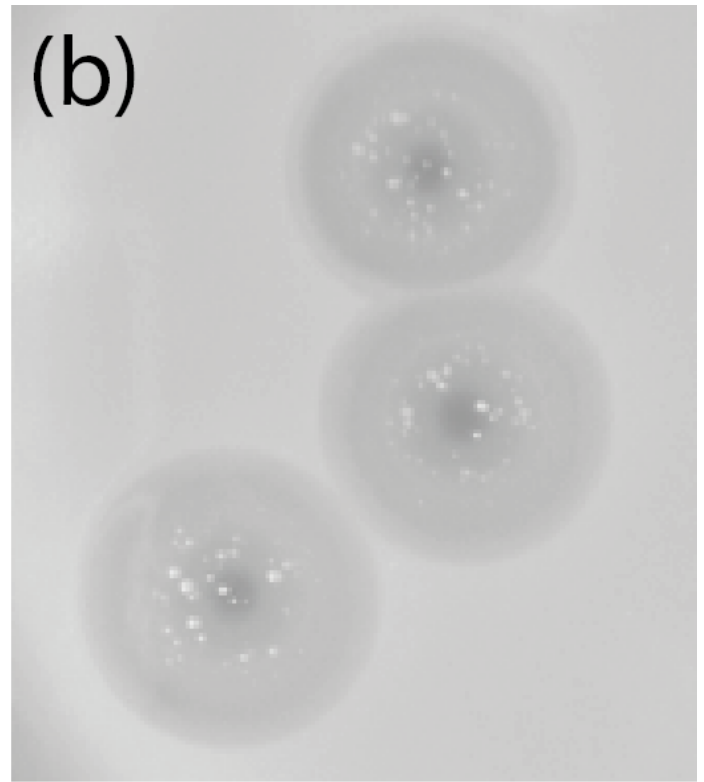
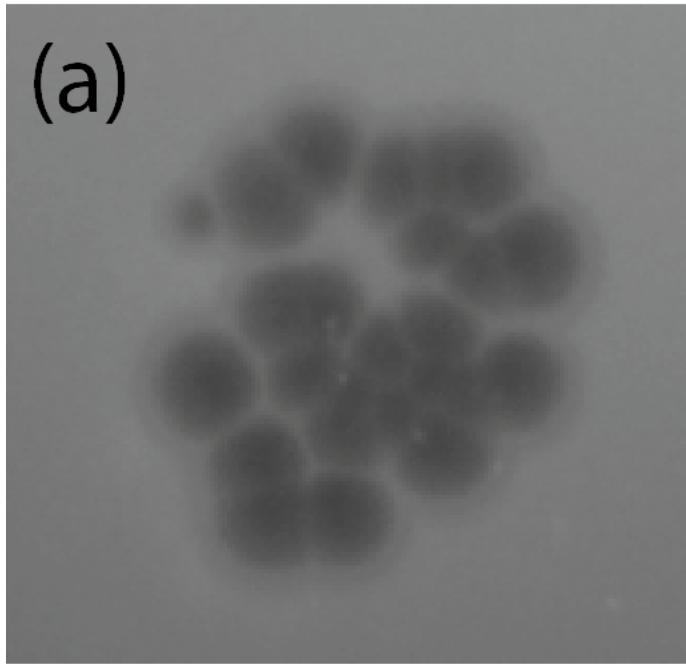
655



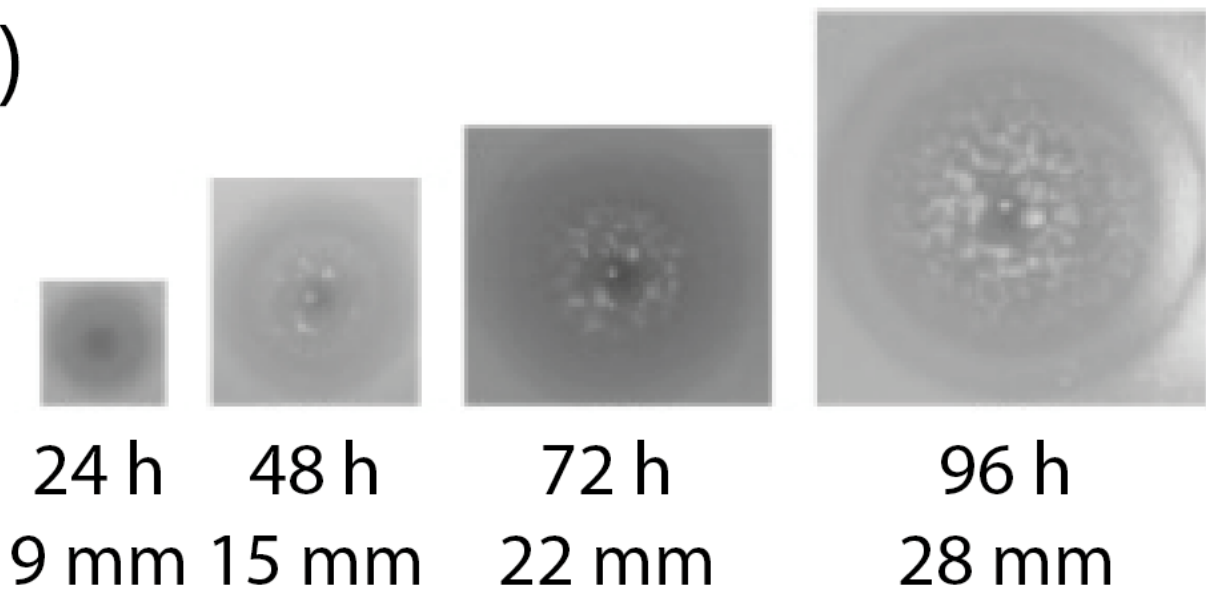
# 1

Figure 1

Appearance of plaques formed on *K. pneumoniae* subsp. *pneumoniae* L4-FAA5 by phage KLPN1. (a) Initial isolation of phages from filtered caecal effluent on TSA. (b) Appearance of plaques of pure phage stock after 24 h. (c) Growth of haloes surrounding plaques over the course of the course of 96 h. After 48 h, presumed phage-insensitive mutants can be seen growing in the haloes surrounding the plaques. Images are shown to scale.



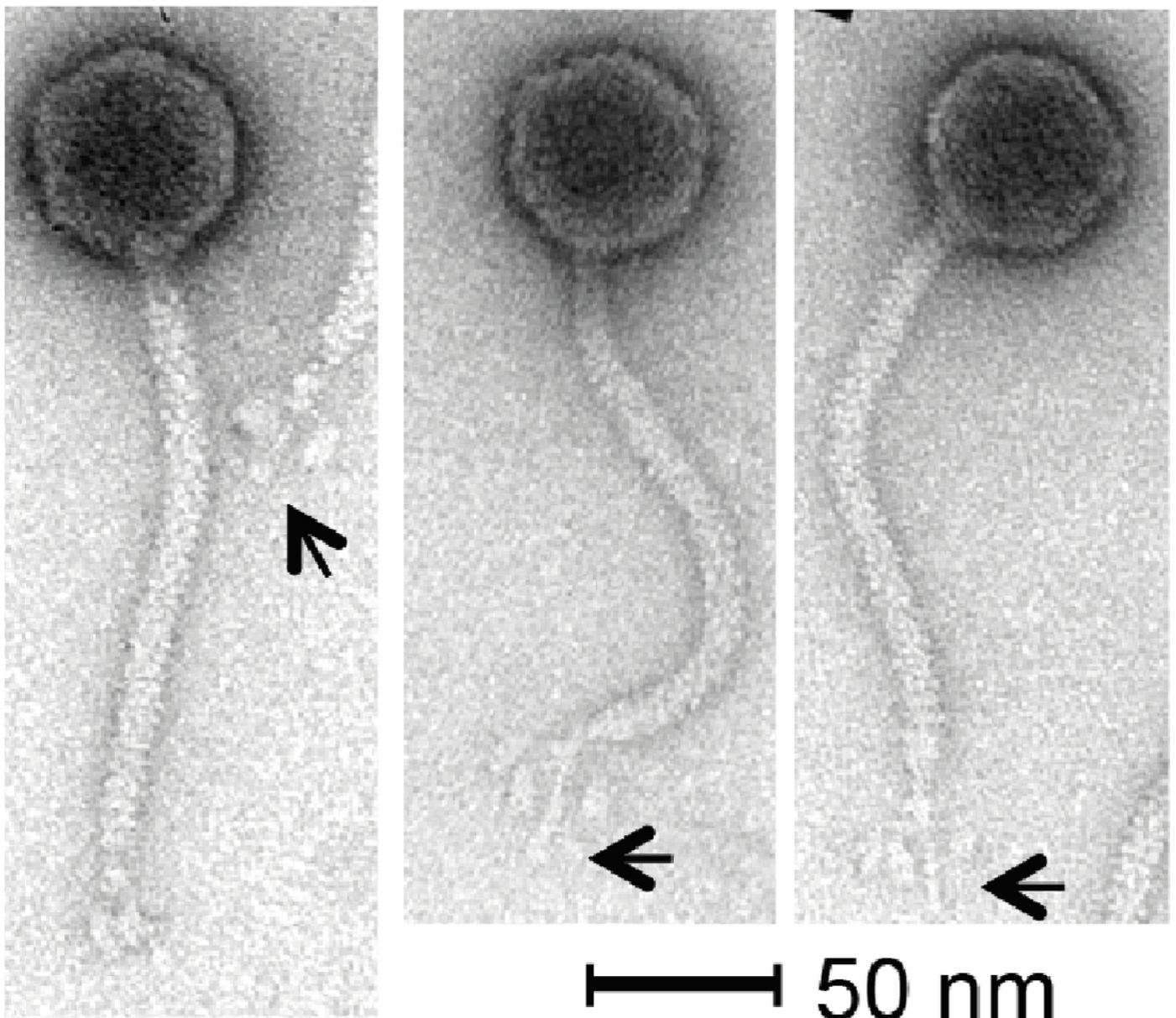
(c)



2

Figure 2

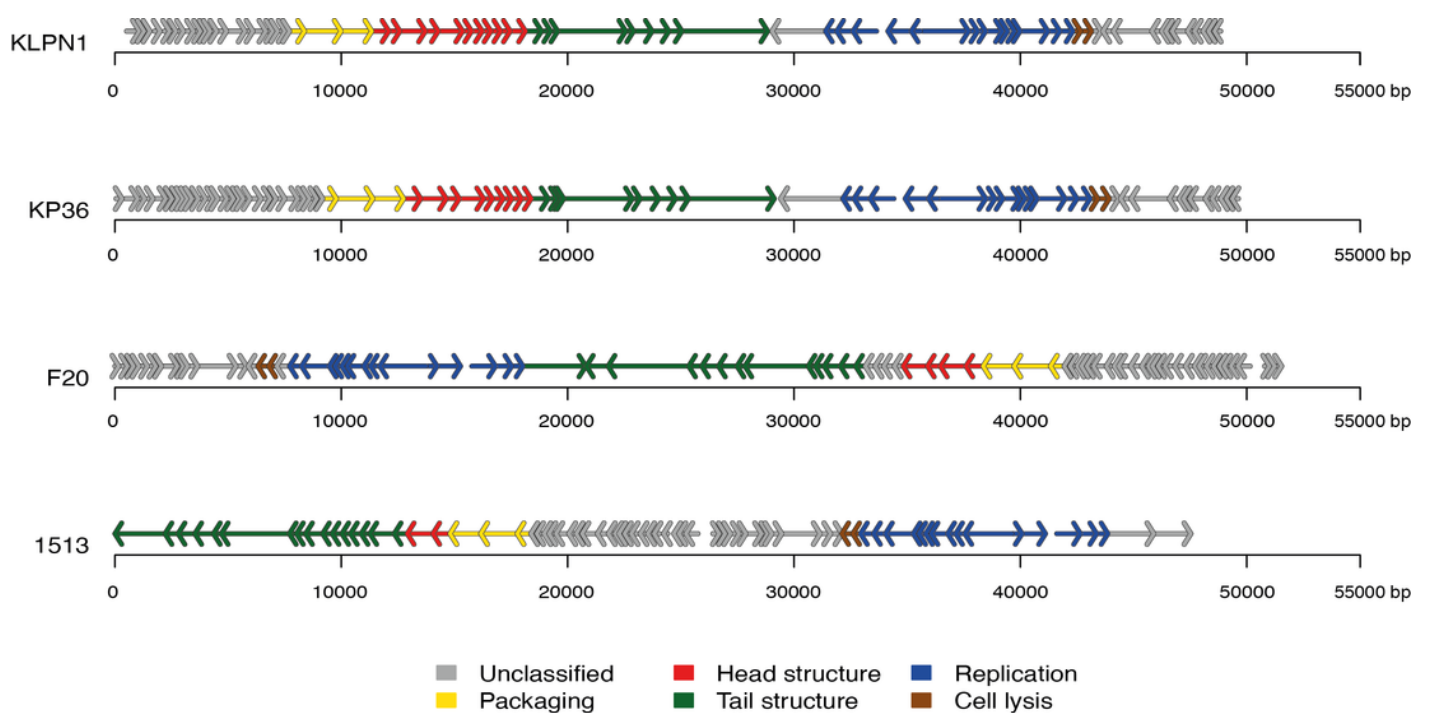
Transmission electron micrographs of phage KLPN1. The phage belongs to the family *Siphoviridae*, and has an unusual base-plate structure, resembling a rosette. The arrows indicate the central tail fibre surrounded by three flexible spherical base-plate structures.



# 3

Figure 3

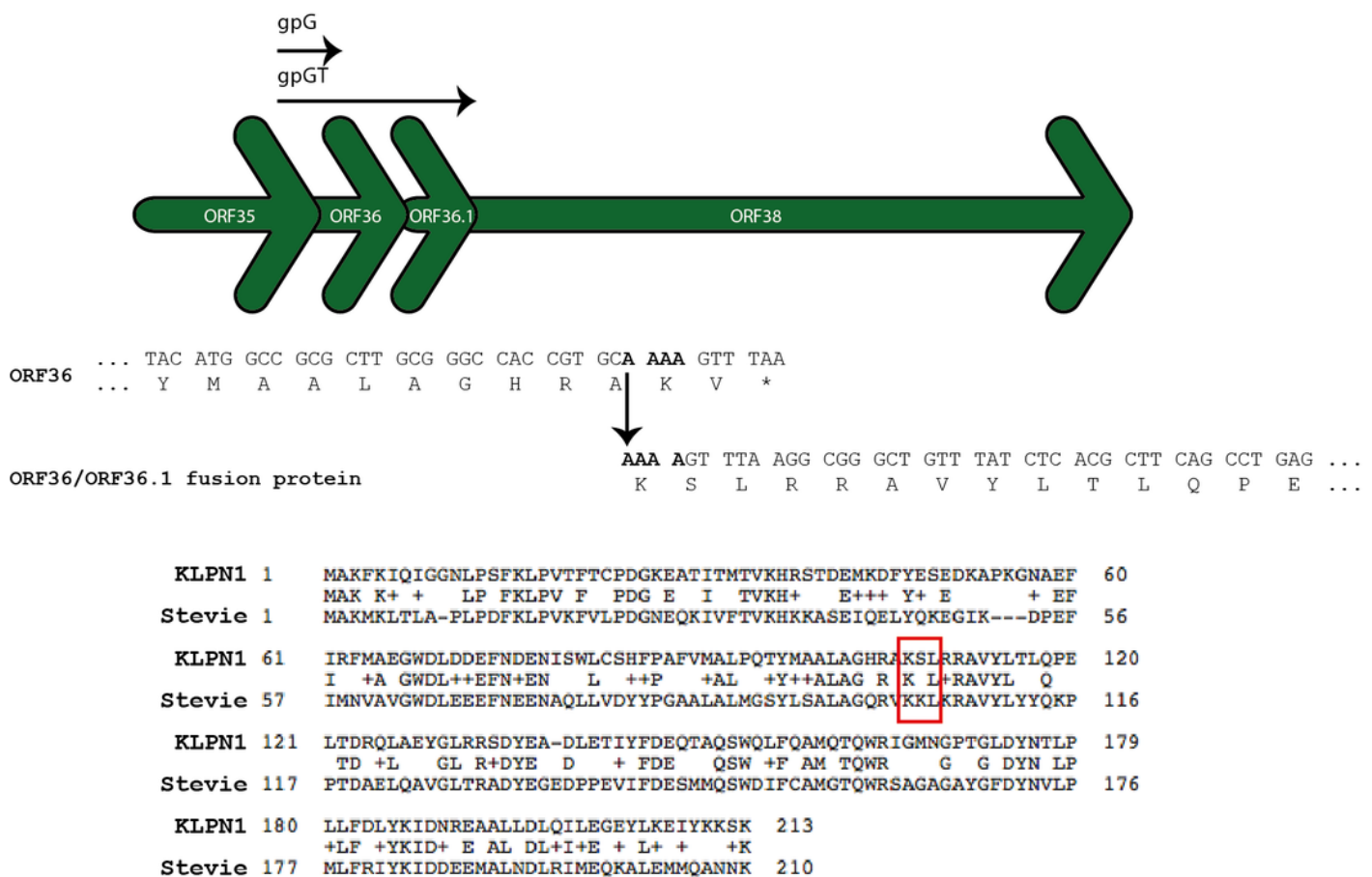
Genome structures of the four members of the genus “Kp36likevirus”. Phages KLPN1, KP36 and 1513 are virulent to *K. pneumoniae*, while F20 is virulent to *Enterobacter aerogenes* (Mishra, Choi & Kang, 2012).



4

Figure 4

ORF36 and ORF36.1 are related by a programmed -1 translational frameshift. The frameshift allows translation of a gpGT-like protein (Xu, Hendrix & Duda, 2013). The ORF36/ORF36.1 fusion protein is predicted to contain almost the entire sequence of ORF36. *Citrobacter Siphoviridae* phage Stevie (GenBank accession number KM236241) has a conserved translational frameshift in its tape measure chaperone (GenBank accession number AIX12284) (Shaw *et al.*, 2015).



**Table 1**(on next page)

Table 1 - Description of *K. pneumoniae* subsp. *pneumoniae* isolates against which phage KLPN1 was screened

**Table 1.** Description of *K. pneumoniae* subsp. *pneumoniae* isolates against which phage KLPN1 was screened

Strain*	Capsular type (K PCR result)†	<i>rmpA</i>	<i>wcaG</i>	Source	Infected by phage KLPN1
L4-FAA5	K2	+	-	Human caecal effluent	Yes
K/5216	K1 (K1 cluster of CC23)	+	+	Liver abscess (Taiwan)	No
NCTC 5055	K2 (reference strain)	+	-	Human	Yes§
NCTC 9660	K5 (reference strain)	-	-	Cloacae of horse	No
PHE1	-	-	-	Rectal swab	No
PHE2	-	-	-	Human clinical	No
PHE3	-	-	-	Sputum, transplant patient	No
PHE4	-	-	-	Urine, spinal injury patient	No
PHE5	-	-	-	Human blood	No
PHE6	-	-	+	Urine, incontinent patient	No
PHE7	-	-	-	Human clinical	No
PHE8	-	-	-	Human blood	No
PHE9	-	-	-	Human clinical	No
PHE10	-	-	-	Human blood	No
PHE11‡	K2	-	-	Blood, patient with urinary tract infection	Yes§
PHE12‡	K2	-	-	Urine	Yes§
PHE13	K2	-	-	Blood and sputum, patient with bacteraemia and pneumonia	Yes§
PHE14	K2	+	-	Sputum, patient with bacteraemia	Yes§
PHE15	K2	-	-	Urine, cardiac patient	Yes§
PHE16	K20	+	-	Sputum, transplant patient	No
PHE17	K54	-	+	Intensive care unit	No
PHE18	K57	-	-	Sputum, transplant patient	No

nd, No data.

\*Strains with the prefix PHE were submitted for typing by healthcare providers to Public Health England – Colindale. Each isolate represented a distinct strain, with the exception of isolates PHE11 and PHE12.

†K PCR can detect K1, K2, K5, K20, K54 and K57 capsular types.

‡Corresponds to multi-locus sequence type ST14, often seen among multi-drug-resistant isolates producing carbapenemases.

§Phage KLPN1 did not exhibit depolymerase activity on these K2 isolates, but it did on L4-

13 FAA5.

14



**Table 2**(on next page)

Table 2 - Characteristics of previously sequenced Klebsiella phages

**Table 2.** Characteristics of previously sequenced *Klebsiella* phages

Phage	Family	Size (bp)	G+C (%)	No. of predicted ORFs	GenBank accession no.	Reference
NTUH-K2044-K1-1	<i>Podoviridae</i>	43,871	54.2	35	NC_025418	Lin <i>et al.</i> (2014a)
F19	<i>Podoviridae</i>	43,766	53.8	51	NC_023567	–
K11	<i>Podoviridae</i>	41,181	53.2	51	NC_011043	–
KP34	<i>Podoviridae</i>	43,809	54.1	57	NC_013649	Drulis-Kawa <i>et al.</i> (2011)
KP32	<i>Podoviridae</i>	41,119	52.4	44	NC_013647	Kęsik-Szeloch <i>et al.</i> (2013)
P13	<i>Podoviridae</i>	45,976	51.7	50	–	Shang <i>et al.</i> (2015)
0507-KN2-1	<i>Myoviridae</i>	159,991	46.7	154	NC_022343	Hsu <i>et al.</i> (2013)
JD001	<i>Myoviridae</i>	48,814	48.5	68	NC_020204	Cui <i>et al.</i> (2012)
KP27	<i>Myoviridae</i>	174,413	41.8	276	NC_020080	Kęsik-Szeloch <i>et al.</i> (2013)
KP15	<i>Myoviridae</i>	174,436	41.8	258	NC_014036	Kęsik-Szeloch <i>et al.</i> (2013)
vB_KleM-RaK2	<i>Myoviridae</i>	345,809	32	534	NC_019526	Šimoliūnas <i>et al.</i> (2012)
K64-1	<i>Myoviridae</i>	346,602	31.72	64	AB897757	Pan <i>et al.</i> (2015)
KP36	<i>Siphoviridae</i>	49,820	50.7	80	NC_019781	Kęsik-Szeloch <i>et al.</i> (2013)
phiKO2	<i>Siphoviridae</i>	51,601	51.5	64	NC_005857	Casjens <i>et al.</i> (2004)
1513	<i>Siphoviridae</i>	49,462	50.61	72	KP658157	Cao <i>et al.</i> (2015)
KLPN1	<i>Siphoviridae</i>	49,037	50.5	73	KR262148	This study

**Table 3**(on next page)

Table 3 - Genomic structure of phage KLPN1

## 2 Table 3. Genomic structure of phage KLPN1

3

KLPN1 genome	Start	Stop	Ribosome-binding site	Start	Strand	Predicted product*	Representative ORF in phage (% amino acid identity)			
							KP36	F20	1513	phiKO2
KLPN1_01	516	1079	AAGGAG	ATG	+	Unknown	-	-	-	-
KLPN1_02	1069	1290	AGGAGG	ATG	+	HP	-	-	-	-
KLPN1_03	1395	1547	GAGGAA	ATG	+	HP pSfl_0028 ( <i>Shigella</i> phage pSf-1)	-	-	39 (94)	-
KLPN1_04	1752	1997	GAAGAtAG	TTG	+	HP ( <i>Escherichia</i> phage e4/1c)	-	-	38 (98.36)	-
KLPN1_05	2186	2416	AGGAGGA	ATG	+	HP KP36_04 KP36	04 (74.65)	76 (63.38)	37 (92.11)	-
KLPN1_06	2487	2699	AGAGGA	ATG	+	HP KP36_06 KP36	06 (82.86)	-	36 (90)	-
KLPN1_07	2710	3030	AAGGAGAA	ATG	+	HP KP36_11 KP36	11 (78.3)	70 (65.09)	35 (82.08)	-
KLPN1_08	3100	3471	GGAGA	ATG	+	HP (Enterobacteria phage F20)	-	69 (83.74)	-	-
KLPN1_09	3481	3783	GAGGtGGccG	ATG	+	HP KP36_15 KP36	15 (91)	68 (56)	33 (85)	-
KLPN1_10	3783	4028	AAcGGGA	ATG	+	HP KP36_16 KP36	16 (97.53)	67 (83.95)	32 (92.59)	-
KLPN1_11	4025	4210	GAGGtAAAAG	ATG	+	HP KP36_17 KP36 ( <u>signal peptide</u> )	17 (85.25)	66 (78.69)	31 (58.18)	-
KLPN1_12	4291	4500	AAtcAGGAG	ATG	+	HP (Enterobacteria phage F20)	-	65 (73.91)	-	-
KLPN1_13	4500	4934	GAGGAGA	ATG	+	HP (Enterobacteria phage F20)	19 (33.93)	64 (32.54)	29 (35.58)	-
KLPN1_14	5004	5750	AAGAGGAA	ATG	+	HP (Enterobacteria phage F20)	20 (50.94)	63 (54.55)	28 (34.84)	-
KLPN1_15	5827	6099	AGGAG	ATG	+	HP KP36_22 KP36	22 (65.56)	61 (66.67)	-	-
KLPN1_16	6096	6668	AAGGtGAtcGAA	ATG	+	HP KP36_23 KP36	23 (96.32)	60 (78.53)	25 (76.44)	-
KLPN1_17	6738	6974	AAGGAG	ATG	+	HP KP36_24 KP36	24 (92.31)	59a (86.3)	24 (96.15)	-
KLPN1_18	6962	7195	GGAGAAGG	ATG	+	HP KP36_25 KP36	25 (100)	59 (87.01)	23 (95.45)	-
KLPN1_19	7324	7518	AAAGGG	ATG	+	HP KP36_26 KP36	26 (96.67)	57 (93.65)	22 (96.88)	-
KLPN1_20	7512	7718	AAGGGAA	ATG	+	HP KP36_27 KP36 ( <u>signal peptide</u> )	27 (96.2)	56 (64.81)	21 (100)	-
KLPN1_21	7773	8378	GAAGcGGcGtAA	ATG	+	terminase small subunit KP36	28(92.53)	55 (91.95)	20 (90.8)	-
KLPN1_22	8388	9992	AAGGGccGA	ATG	+	terminase large subunit KP36 ( <u>terminase-like family</u> : PF03237)	29 (99.25)	54 (98.13)	19 (99.44)	-
KLPN1_23	10038	11348	AAAcAAGGttGA	ATG	+	portal protein KP36 ( <u>phage portal protein</u> , SPPI Gp6-like: PF05133)	30 (98.62)	53 (91.78)	18 (99.31)	-
KLPN1_24	11335	12102	GGAGGcGGA	ATG	+	capsid morphogenesis protein KP36 ( <u>phage head morphogenesis domain</u> : IPR006528)	31 (96.44)	52 (90.12)	17 (95.22)	-
KLPN1_25	12104	12589	GAGGttAG	ATG	+	HP gp40 ( <i>Escherichia</i> phage phiEB49) HNH endonuclease ( <u>HNH endonuclease</u> : PF13392)	-	-	-	-
KLPN1_26	12586	13716	GGAGA	ATG	+	capsid protein KP36	32 (99.47)	51 (93.09)	16 (99.47)	-
KLPN1_27	13768	14286	AGGAGA	ATG	+	HP KP36_33 KP36	33 (96.2)	50 (50.87)	15 (96.84)	-
KLPN1_28	14400	15359	AGGAG	ATG	+	major capsid protein KP36_34 KP36	34 (98.75)	49 (94.36)	14 (98.43)	-
KLPN1_29	15451	15756	GGAGcA	ATG	+	HP KP36_35 KP36	35 (100)	48 (86.15)	13 (98.77)	-

KLPN1 genome	Start	Stop	Ribosome-binding site	Start	Strand	Predicted product*	Representative ORF in phage (% amino acid identity)			
							KP36	F20	1513	phiKO2
KLPN1_30	15753	16226	AAAAGcGcGGA	ATG	+	HP KP36_36 KP36	36 (100)	47 (92.75)	12 (97.83)	-
KLPN1_31	16232	16609	GGtAGGtGA	ATG	+	HP KP36_37 KP36	37 (99.2)	46 (94.4)	11 (98.4)	-
KLPN1_32	16602	17039	AGGGtGGcGA	ATG	+	HP KP36_38 KP36	38 (100)	45 (92.41)	10 (99.05)	-
KLPN1_33	17029	17463	GAGcGAGG	ATG	+	HP (Enterobacteria phage F20) Tail protein ( <u>phage tail protein: PF13554</u> )	39 (76.39)	44 (88.19)	09 (74.19)	-
KLPN1_34	17450	18136	GGAGGcGA	ATG	+	HP (Enterobacteria phage F20) Tail protein ( <u>phage tail protein: PF08813</u> )	-	43/42 (68.26/42.04)	08 (43.36)	-
KLPN1_35	18189	18845	AGGAG	ATG	+	HP (Enterobacteria phage F20) Tail protein ( <u>phage tail protein: PF08813</u> )	40 (91.67)	42 (82.87)	08 (96.33)	-
KLPN1_36	18922	19248	AGGAG	ATG	+	Tape measure chaperone protein ( <u>domain of unknown function DUF1789: PF08748</u> )	41 (98.15)	41 (57.01)	07 (98.15)	-
KLPN1_36.1	19239	19562	-	-	+	Tape measure chaperone protein ( <u>phage-related hypothetical protein DUF1799: PF08809</u> )	-	40 (92.73)	06 (96.36)	-
KLPN1_38	19620	22565	GAtAAAGtAG	TTG	+	tail length tape-measure protein KP36 ( <u>λ phage tail tape-measure protein: PF09718</u> )	43 (91.63)	39 (80.22/68.85)	05 (91.04)	-
KLPN1_39	22568	22912	AAcGAGGG	GTG	+	minor tail protein KP36 ( <u>minor tail protein: PF05939</u> )	44 (88.6)	38 (87.72)	04 (86.84)	16 (28.32)
KLPN1_40	22949	23734	-		+	minor tail protein KP36 ( <u>minor tail protein L: TIGR01600</u> )	45 (93.17)	37 (91.27)	03 (92.77)	17 (36.78)
KLPN1_41	23736	24473	GAAAAGcGGAcGG	ATG	+	minor tail protein KP36 ( <u>endopeptidase_NlpC/P60 family: PF00877</u> )	46 (93.47)	36 (96.33)	02 (94.69)	18 (42.62)
KLPN1_42	24448	25050	AAGGA	ATG	+	tail assembly protein KP36 ( <u>λ tail assembly protein I: PF06805</u> )	47 (94.5)	35 (98)	01 (95.03)	-
KLPN1_43	25138	28839	AGGAGG	ATG	+	tail fiber protein KP36 ( <u>putative phage tail protein: PF13550</u> )	48 (95.86)	34 (88.6)	01a (95.06)	21 (39.75)
KLPN1_44	29027	31297	AAGAGG	ATG	-	HP L418_01651 ( <i>Klebsiella pneumoniae</i> UICRE 7) ( <u>galactose-binding domain-like: IPR008979</u> )	49 (66.79)	32 (83.49)	71 (70.15)	-
KLPN1_45	31392	31853	AGGAACGA	ATG	-	single-stranded DNA binding protein KP36 ( <u>nucleic-acid binding proteins: SSF50249</u> )	50 (98.04)	31 (82.35)	70 (96.08)	-
KLPN1_46	31890	32546	AAGGAAA	ATG	-	putative recombination protein KP36 ( <u>signal peptide</u> )	51 (99.54)	30 (93.12)	69 (98.62)	-
KLPN1_47	32606	33652	GGAGcAA	ATG	-	exodeoxyribonuclease VIII KP36 ( <u>PD-(D/E)XK nuclease superfamily: PF12705</u> )	52 (97.7)	29 (93.39)	68 (97.99)	-
KLPN1_48	34148	35107	GGAGGtAA	GTG	-	DNA primase KP36 ( <u>bacteriophage T7, Gp4, DNA primase/helicase, N-terminal: IPR013237</u> )	53 (98.7)	28 (88.64)	67 (99.35)	-
KLPN1_49	35183	35584	GAGGGtAA	ATG	-	putative transcriptional regulator KP36 ( <u>λ repressor-like, DNA-binding domain: IPR010982</u> )	54 (98.5)	27 (95.49)	66 (99.25)	-
KLPN1_50	35676	37712	AGGAtG	ATG	+	DNA helicase KP36 ( <u>helicase, C-terminal: IPR001650</u> )	55 (98.52)	26 (94.25)	65 (98.82)	-
KLPN1_51	37709	38116	GGAGGcGAGG	GTG	+	HP KP36_56 KP36 ( <u>VRR-NUC domain: IPR014883</u> )	56 (99.08)	25 (86.61)	64 (100)	-
KLPN1_52	38181	38468	GAAGAAcGGA	ATG	+	HP KP36_57 KP36 ( <u>signal peptide</u> )	57 (95.65)	-	63 (94.87)	-
KLPN1_53	38471	39202	GcGAGGtAA	ATG	+	DNA adenine methyltransferase KP36 ( <u>phage N-6-adenine-methyltransferase: TIGR01712</u> )	58 (97.53)	23 (92.59)	62 (97.94)	-
KLPN1_54	39204	39440	GcGtAtGcGAA	ATG	+	HP KP36_59 KP36	59 (88.46)	22 (79.49)	61 (89.74)	-
KLPN1_55	39451	39741	-	ATG	+	HP (Enterobacteria phage F20)	60 (98.72)	21 (83.33)	60 (98.72)	-
KLPN1_56	39741	39989	GGtGAcGA	ATG	+	HP KP36_61 KP36	61 (95.18)	20 (89.02)	59 (96.39)	-

KLPN1 genome	Start	Stop	Ribosome-binding site	Start	Strand	Predicted product*	Representative ORF in phage (% amino acid identity)			
							KP36	F20	1513	phiKO2
KLPN1_57	40085	41215	AAAtGGGAtAA	ATG	+	HP KP36_62 KP36 ( <u>metallo-dependent phosphatase-like: IPR029052</u> )	62 (99.2)	19 (94.15)	58 (99.2)	-
KLPN1_58	41254	41745	AAGGAAA	ATG	+	3'-phosphatase, 5'-polynucleotide kinase KP36 ( <u>HAD superfamily, subfamily IIIB</u> ( <u>acid phosphatase</u> ): PF03767)	63 (93.87)	18 (75.46)	57 (95.09)	-
KLPN1_59	41742	42323	GGAGtAGA	ATG	+	HP KP36_64 KP36 ( <u>P-loop containing nucleoside triphosphate hydrolase:</u> <u>IPR027417</u> )	64 (99.48)	17 (88.17)	56 (99.48)	-
KLPN1_60	42450	42665	AGAGG	ATG	+	holin KP36	65 (83.1)	16 (80.28)	55 (83.1)	-
KLPN1_61	42667	43149	AGGAGcAAG	ATG	+	endolysin KP36 ( <u>lysozyme-like domain: IPR023346</u> )	66 (86.23)	15 (90.57)	54 (98.12)	-
KLPN1_62	43146	43571	AAGGA	ATG	+	Rz1A protein KP36	67 (96.45)	14 (89.36)	53 (99.29)	-
KLPN1_63	43641	44102	GAGGtAA	ATG	-	HP KP36_68 KP36	68 (98.69)	13 (88.89)	52 (98.69)	-
KLPN1_64	44106	45674	AGGAGcAAGG	ATG	-	HP KP36_69 KP36 ( <u>protein of unknown function DUF3987: PF13148</u> )	69 (99.81)	12 (95.79)	51 (99.81)	-
KLPN1_65	45800	46237	GGAGAAAG	ATG	-	HP KP36_70 KP36	70 (97.93)	11 (91.03)	50 (98.62)	-
KLPN1_66	46238	46420	GAAGAAA	ATG	-	HP KP36_71 KP36	71 (93.33)	10 (86.44)	49 (93.33)	-
KLPN1_67	46417	46620	GGAGtAAAcGGA	ATG	-	HP KP36_72 KP36	72 (97.01)	09 (65.67)	48 (92.54)	-
KLPN1_68	46693	47385	AAAtGGtGGA	ATG	-	HP KP36_73 KP36	73 (97.83)	08 (90)	47 (96.96)	42 (56.83)
KLPN1_69	47382	47681	GGcAtAG	TTG	-	HP KP36_74 KP36	74 (100)	06 (55.41)	46 (52.7)	-
KLPN1_70	47688	48065	GAAAcGAGG	ATG	-	HP KP36_75 KP36	75 (96)	05 (66.13)	45 (70)	-
KLPN1_71	48065	48304	GAGAAGGG	ATG	-	HP KP36_76 KP36	76 (96.2)	04 (93.1)	44 (97.47)	-
KLPN1_72	48301	48495	AGGAGAA	ATG	-	HP KP36_77 KP36	77 (93.75)	03 (84.81)	43 (95.31)	-
KLPN1_73	48568	48849	AGAGGG	ATG	-	HP KP36_78 KP36	78 (97.47)	02 (84.81)	42 (96.2)	-

- 4
- 5 \*HP, hypothetical protein. Underlined predicted products are from InterProScan (<http://www.ebi.ac.uk/interpro/>) searches that
- 6 returned results with the amino acid sequence encoded by each ORF (Supplementary Table 2).



**Table 4**(on next page)

Table 4 - Selected HHpred results for ORF34 and ORF35 of phage KLPN1



2 **Table 4.** Selected HHpred results for ORF34 and ORF35 of phage KLPN1

3

Hit	Probability of true positive	E-value	P-value	Score	SS	Cols	ORF amino acids	Reference
<b>ORF34</b>								
2k4q_A Major tail protein V; GPV, bacteriophage lambda, viral protein; NMR {Enterobacteria phage lambda}	99.9	$1.3 \times 10^{-27}$	$3.6 \times 10^{-32}$	195.4	7.6	124	99-224	Pell <i>et al.</i> (2009)
3ju4_A Endo- <i>N</i> -acetylneuraminidase; endonf, polysia, high-resolution, glycosidase, hydrolase; HET: SLB; 0.98A {Enterobacteria phage K1F}	81.6	1.4	$4.1 \times 10^{-5}$	42.0	4.1	93	23-123	Schulz <i>et al.</i> (2010)
4hiz_A Endosialidase, PHI92_GP143; sialidase fold, beta-helix, endo-alpha2,8-sialidase, endo-AI sialidase sialic acid polymer; HET: SLB SIA SUC; 1.60A {Enterobacteria phage PHI92}	80.9	4	0.00012	39.1	6.8	65	23-95	Unpublished
<b>ORF35</b>								
2k4q_A Major tail protein V; GPV, bacteriophage lambda, viral protein; NMR {Enterobacteria phage lambda}	99.9	$5.3 \times 10^{-28}$	$1.5 \times 10^{-32}$	195.1	8.6	119	94-214	Pell <i>et al.</i> (2009)
4hiz_A Endosialidase, PHI92_GP143; sialidase fold, beta-helix, endo-alpha2,8-sialidase, endo-AI sialidase sialic acid polymer; HET: SLB SIA SUC; 1.60A {Enterobacteria phage PHI92}	91.4	0.55	$1.6 \times 10^{-5}$	44.1	7.3	65	23-87	Unpublished
3ju4_A Endo- <i>N</i> -acetylneuraminidase; endonf, polysia, high-resolution, glycosidase, hydrolase; HET: SLB; 0.98A {Enterobacteria phage K1F}	90.0	0.59	$1.7 \times 10^{-5}$	43.8	6.2	65	23-87	Schulz <i>et al.</i> (2010)

4

