

Genome survey sequencing of the Caribbean spiny lobster *Panulirus argus*: Genome size, nuclear rRNA operon, repetitive elements, and microsatellite discovery

J. Antonio Baeza^{1,2,3}

¹ Department of Biological Sciences, Clemson University, Clemson, SC, USA

² Departamento de Biología Marina, Universidad Católica del Norte, Coquimbo, IV Region, Chile

³ Smithsonian Marine Station at Fort Pierce, Smithsonian Institution, Fort Pierce, FL, USA

ABSTRACT

Background: *Panulirus argus* is an ecologically relevant species in shallow water hard-bottom environments and coral reefs and target of the most lucrative fishery in the greater Caribbean region.

Methods: This study reports, for the first time, the genome size and nuclear repetitive elements, including the 45S ribosomal DNA operon, 5S unit, and microsatellites, of *P. argus*.

Results: Using a *k*-mer approach, the average haploid genome size estimated for *P. argus* was 2.17 Gbp. Repetitive elements comprised 69.02% of the nuclear genome. In turn, 30.98% of the genome represented low- or single-copy sequences. A considerable proportion of repetitive sequences could not be assigned to known repeat element families. Taking into account only annotated repetitive elements, the most frequent belonged to Class I-LINE which were noticeably more abundant than Class I-LTR-Ty-3/Gypsy, Class I-LTR-Penelope, and Class I-LTR-Ty-3/Bel-Pao elements. Satellite DNA was also abundant. The ribosomal operon in *P. argus* comprises, in the following order, a 5' ETS (length = 707 bp), ssrDNA (1,875 bp), ITS1 (736 bp), 5.8S rDNA (162 bp), ITS2 (1,314 bp), lsrDNA (5,387 bp), and 3' ETS (287 bp). A total of 1,281 SSRs were identified.

Subjects Genetics, Genomics, Marine Biology, Molecular Biology, Zoology

Keywords Genome survey, Repetitive elements, Crustacea, Nuclear ribosomal operon

INTRODUCTION

The order Decapoda is one of the most species-rich crustacean clades (*De Grave et al., 2009*). In this clade, clawless lobsters (infraorder Achelata) differ markedly in their morphology, behavior, and ecology (*De Grave et al., 2009; Lozano-Fernandez et al., 2019*). Clawless lobsters lack chelae on the first pair of pereopods and also share a unique larval type; the long-lived phyllosomata. Many species attain large body sizes and relatively high population densities, and thus, are the target of major fisheries in all subtropical and tropical oceans (*Holthuis, 1991*).

Submitted 29 September 2020

Accepted 22 November 2020

Published 17 December 2020

Corresponding author

J. Antonio Baeza,
baeza.antonio@gmail.com

Academic editor

Joseph Pawlik

Additional Information and
Declarations can be found on
page 9

DOI 10.7717/peerj.10554

© Copyright
2020 Baeza

Distributed under
Creative Commons CC-BY 4.0

OPEN ACCESS

The Caribbean spiny lobster *Panulirus argus* (Latreille, 1804) is an ecologically relevant species in coral reefs (Higgs, Newton & Attrill, 2016) and target of the most profitable fishery in the greater Caribbean region (Holthuis, 1991). *Panulirus argus* inhabits the western Atlantic Ocean from North Carolina in the northern hemisphere to southern Brazil in the southern hemisphere (Holthuis, 1991). The life history of *P. argus* is well understood (Baeza et al., 2016; Baeza, 2018, and references therein). Adult females can produce 2–4 clutches of eggs per year (Maxwell et al., 2009). Fecundity increases with female body size and ranges between 100,000 and 750,000 eggs per female (Baeza et al., 2016). After completion of embryo development and hatching of larvae, 10 consecutive planktonic stages succeed one another (Goldstein et al., 2008). These planktotrophic phyllosomata larvae can spend 4–18 months suspended in the water column (Goldstein et al., 2008). The 10th larval stage undergoes a metamorphosis offshore, turning into a fast-swimming, lecithotrophic, short-lived (2–4 weeks) “puerulus” post-larval stage with morphology similar to that of juvenile and adult benthic lobsters, but almost devoid of coloration (Phillips et al., 2006). Pueruli actively swim from the open ocean to shallow coastal habitats, where they settle in vegetated habitats (Baeza, Childress & Ambrosio, 2018, and references therein). A few days after settlement, pueruli molt and metamorphose into early benthic juveniles that resume feeding and dwell in the vegetation for several months (Lewis, Moore & Babis, 1952; Behringer et al., 2009). Later, juveniles emerge, become social, and are often found sharing crevice shelters with other juveniles as well as subadult lobsters (Childress & Herrnkind, 1997). As lobsters near maturity (~1.5 years post-settlement), they migrate to join the adult population on coral reefs, where they mate and reproduce (Childress & Herrnkind, 1996; Bertelsen & Hornbeck, 2009; Baeza et al., 2016). *P. argus* is fully exploited or overexploited across its entire geographic range (Holthuis, 1991).

A few genomic resources exist for *P. argus* (Kozma et al., 2018; Baeza, 2018; Baeza, Umaña-Castro & Mejia-Ortiz, 2019; Baeza & MacManes, 2020; Subramaniam et al., 2020). The mitochondrial genome of *P. argus* has recently been assembled and analyzed in detail (Baeza, 2018). Also, the heart + hemolymph (Baeza & MacManes, 2020) and nervous system (Kozma et al., 2018) transcriptomes have been assembled and annotated. Lastly, a SNP panel developed using 2bRAD-sequencing has been tested in order to explore meta-population connectivity throughout the greater Caribbean basin in this species (Baeza, Umaña-Castro & Mejia-Ortiz, 2019).

This study forms part of an effort to develop genomic resources in *P. argus* and congeneric species in the western Atlantic and Gulf of Mexico. Using a low-pass short read next generation sequencing approach, I have estimated the genome size using an *in-silico* approach, explored repetitive elements in the nuclear genome, assembled ribosomal RNA genes, including the 45S operon and 5S unit, and discovered microsatellites.

MATERIALS AND METHODS

Sampling of *Panulirus argus* and DNA extraction

Field collection was approved by FWCC (permit number: SAL-11-1319-SR). The studied specimen was collected as previously described in Baeza (2018). In brief, one adult female

of *P. argus* was collected in July 2017 by hand while SCUBA diving from a patch reef on the ocean side of Long Key (N24°49'26"; W80°48'48"), Florida, USA and transported alive to Clemson University, Clemson, SC. In the laboratory, the specimen was maintained in a 500 L circular polyethylene container. Muscle was extracted from a pereopod, and the tissue was immediately snap-frozen within a 50 ml centrifuge tube located inside a 3 L plastic ice chest containing dry ice blocks (−78.5 °C). Within an hour of tissue extraction, the sample was transported to OMEGA Bioservices (Norcross, GA, USA).

Library preparation, and sequencing

Total genomic DNA was extracted as described in [Baeza \(2018\)](#) from the muscle tissue using the OMEGA BIO-TEK® E.Z.N.A.® Blood and Tissue DNA Kit following the manufacturer's protocol. DNA concentration was measured using the QuantiFluor dsDNA system on a Quantus Fluorometer (Promega, Madison, WI, USA). A Kapa Biosystems HyperPrep kit (Kapa Biosystems, Wilmington, MA, USA) was used for whole genome library construction. Briefly, 1 µg of genomic DNA was fragmented using a Bioruptor sonicator (Diagenode, Denville, NJ, USA). DNA fragment ends were repaired, 3' adenylated, and ligated to Illumina adapters. The resulting adapter-ligated libraries were PCR-amplified, Illumina indexes added and pooled for multiplexed sequencing on an Illumina HiSeq X10 sequencer (Illumina, San Diego, CA, USA) using a pair-end 150 bp run format.

A total of 439,834,692 PE reads used in this study are available in the short read archive (SRA) repository (accession number [SRR13036344](#)) at GenBank.

Genome size of *Panulirus argus*

Contaminants, low quality sequences (Phred scores < 20), and Illumina adapters were removed using the software fastp using default parameters ([Chen et al., 2018](#)), leaving 415,398,624 high quality reads for genome size estimation with the software Jellyfish-2 using k -mer = 21 ([Marçais & Kingsford, 2011](#)) and the server GenomeScope 2.0 ([Ranallo-Benavidez, Jaron & Schatz, 2020](#)).

Repetitive elements in the genome of *Panulirus argus*

Discovery, characterization, and quantification of repetitive elements in the genome of *P. argus* were conducted as described in [Baeza \(2020\)](#) using the workflow RepeatExplorer 2.3.8 ([Novak et al., 2013](#)) in the platform Galaxy (<http://repeatexplorer.org/>). After a first clustering step, reads are assembled into contigs using the program CAP3 ([Huang & Madan, 1999](#)) and annotated using the internal Metazoa version 3.0 repeat dataset included in the package. All other parameters in RepeatExplorer were set to default values. The pipeline RepeatExplorer was originally developed for analyzing plants, and thus, annotation is known to be more efficient for plants than animals ([Novak, Neumann & Macas, 2020](#)). Still, RepeatExplorer is efficient in analyzing repeat composition and abundance of animal genomes with low coverage Illumina PE sequences ([Novak et al., 2013, 2020](#)).

Nuclear ribosomal operon/tandem repeat in *Panulirus argus*

The nuclear ribosomal operon, that codes for the large and small nuclear rRNA genes (18S or *ssrDNA*, 28S or *lsrDNA*), the 5.8S rDNA gene, two internal transcribed spacers (ITS1 and ITS2), and two external transcribed spacers (5' ETS and 3' ETS), in the genome of *P. argus* was characterized using the contigs assembled by the program CAP3 that were annotated as nuclear repetitive ribosomal DNA by RepeatExplorer. Each contig ($n = 38$) was blasted against the non-redundant (nr) nucleotide NCBI database as well as Dfam (Hubley et al., 2016) and Rfam (Kalvari et al., 2018). Contigs not matching crustacean ribosomal sequences with E -values $< 1e-6$ were discarded ($n = 3$), the remaining contigs were aligned with Muscle (Edgar, 2004) with default parameters as implemented in MEGA (Kumar et al., 2018) and the assembly was curated manually. The exact coding positions of the 18S and 28S nuclear rDNAs and the boundaries of the 5' and 3' ETSs were determined using RNAmmer with default parameters (Lagesen et al., 2007). The exact coding positions of the 5.8S nuclear rDNA and the boundaries of the ITS1 and ITS2 were determined using ITSx (Bengtsson-Palme et al., 2013). The Neural Network Promoter Prediction (NNPP) tool (Reese, 2001) available at the Berkeley Drosophila Genome project (http://www.fruitfly.org/seq_tools/promoter.html) was used with default parameters to determine the putative position of a promoter in the 5' ETS. Lastly, the PE reads were mapped to the newly assembled rDNA operon using bowtie2 2.4.2 (Langmead & Salzberg, 2012) with default parameters to determine coverage.

Microsatellite discovery in *Panulirus argus*

Simple Sequence Repeats in the genome of *P. argus* were discovered as described in Baeza (2020) with the pipeline Pal_finder v0.02.04.08 in the platform Galaxy (<https://palfinder.ls.manchester.ac.uk>) (Griffiths et al., 2016). After scanning for the existence of SSRs (Simple Sequence Repeats) (di-, tri-, tetra-, penta-, and hexa-nucleotide motif repeats) in previously filtered Illumina PE short reads, PCR primers were developed with the program Primer3 (Untergasser et al., 2012). Also, the software PANDaseq (Masella et al., 2012) was used to assemble paired-end reads and confirm that the primer sequences were present in a high-quality assembly based on the available reads. A minimum of 5 repeats were requested for the program pal_finder to select 2-mer SSRs and a minimum of 6 repeats to select SSRs with 3, 4, 5, and 6 repeat motifs.

RESULTS AND DISCUSSION

Genome size of *Panulirus argus*

Using a k -mer approach, the average haploid genome size estimated for *P. argus* was 2.17 Gbp, with a relatively low level of genome heterozygosis (het. = 1.48%), and a moderately high unique genome content (64.4%) (Fig. 1). Estimates of heterozygosis varied between 0.0039 and 0.0048 with an average (\pm SD) of 0.0042 (\pm 0.0002) in ten different individuals of *P. argus* as reported by a previous study that used 2b-RAD sequencing (Baeza, Umaña-Castro & Mejia-Ortiz, 2019).

Genome size previously estimated for *P. argus* heart cells using static cell fluorometry is 5.55 Gbp (Jimenez et al., 2010). Genome size is moderately variable in the family

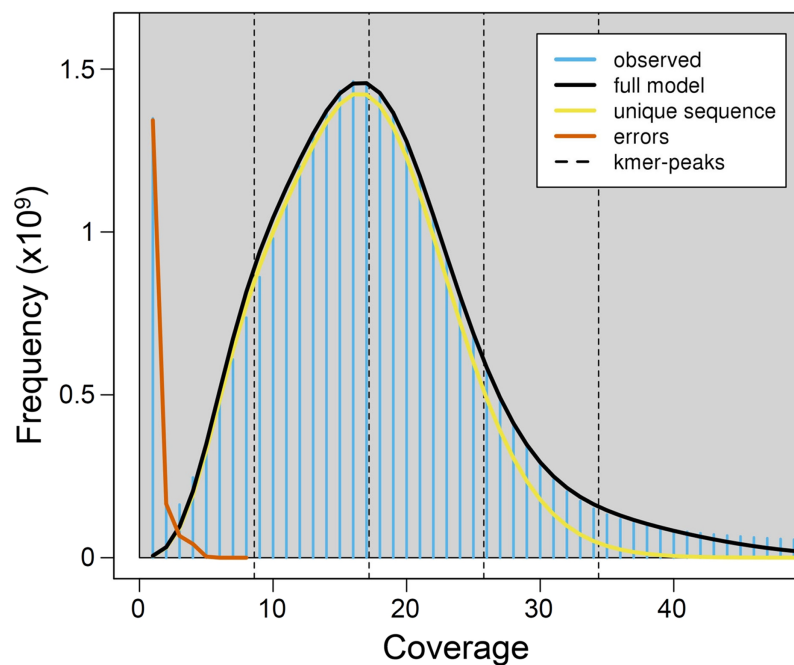


Figure 1 K-mer ($k = 21$) spectrum analysis to estimate genome size in the Caribbean spiny lobster *Panulirus argus*. The plot shows major peaks and a high frequency of putative error k -mers with coverage $<10\times$. The abscissa (x -axis) is depth of coverage and the ordinate (y -axis) is the proportion that represents the frequency at that depth divided by the total frequency of all depths.

Full-size  DOI: [10.7717/peerj.10554/fig-1](https://doi.org/10.7717/peerj.10554/fig-1)

Palinuridae, ranging from 3.15 Gbp in the Pink spiny lobster *Palinurus mauritanicus* to 5.55 Gbp in *P. argus* (animal genome size database (<http://www.genomesize.com/>), consulted 11/20/2020). The observed difference in genome size estimated for *P. argus* when calculated using a k -mer approach and cell fluorometry (Jimenez *et al.*, 2010) might be due to the relatively large portion of repetitive elements in the nuclear genome of this species (see below). Repetitive elements are known to bias genome size estimations downwards when they account for a large portion of a genome (Baeza, 2020 and references therein). Furthermore, the large genome size estimated for *P. argus* (>2 Gbp) implies that a combination of short and long-reads (i.e., PacBio, ONT) will likely be required for assembling a high quality (i.e., chromosome level) genome in this species. Given their length (~ 10 – 20 kbp—Jain *et al.*, 2018), long reads can resolve repetitive genomic regions that otherwise are reconstructed with much lower resolution by short reads (Jain *et al.*, 2018). In turn, short reads improve assembly accuracy given that their error rate is lower than that of long reads (Rhoads & Au, 2015; Rang, Kloosterman & De Ridder, 2018).

Repetitive elements in the genome of *Panulirus argus*

A total of 166,576 clusters contained 69.02% of all analyzed reads (a sub-sample of 1,220,482 reads). In turn, 30.98% of the analyzed reads represented, putatively, low- or single-copy sequences in the genome of *P. argus*. The proportion of reads representing the

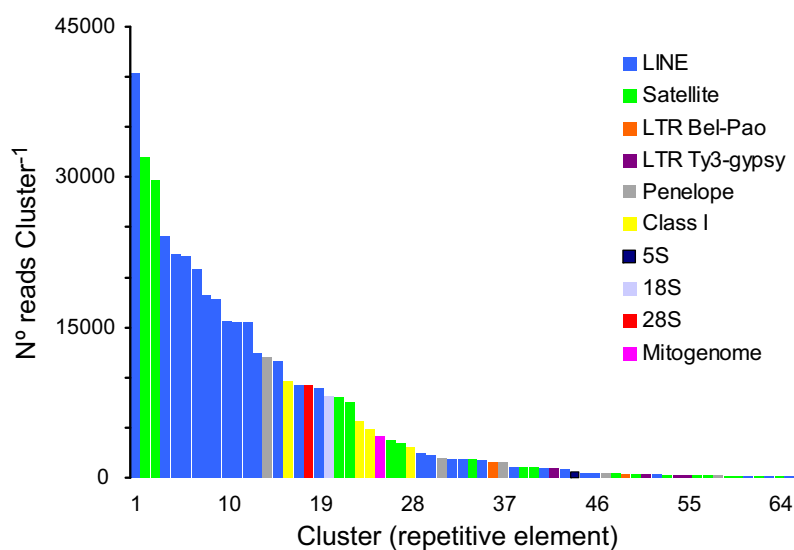


Figure 2 Size distribution and repeat composition of annotated clusters generated by similarity based partitioning of in the Caribbean spiny lobster *Panulirus argus*. Bars are colored according to the type of repeat present in the cluster, as determined by the similarity search in RepeatExplorer2.

Full-size [DOI: 10.7717/peerj.10554/fig-2](https://doi.org/10.7717/peerj.10554/fig-2)

most abundant repetitive elements in the genome of *P. argus* was 37.96% (in the top 127 clusters). Importantly, a large portion of the repetitive elements families ($n = 63$ clusters, 63,923 reads) were reported as “unclassified” by RepeatExplorer given that they could not be assigned to known repeat families. The above suggests that abundant new repetitive elements will be discovered by future studies focusing on the “repeatome” of *P. argus* as well as other crustaceans. Taking into account only annotated clusters, the most common repetitive elements belonged to Class I-Long Interspersed Nuclear Element (LINE) ($n = 28$ clusters, 269,194 reads), which were considerably more abundant than Class I-LTR-Penelope elements ($n = 5$, 16,095 reads), Class I-LTR-Ty-3/Bel-Pao elements ($n = 2$, 1,887 reads), and Class I-LTR-Ty-3/Gypsy elements ($n = 5$, 1,793 reads) (Fig. 2). Seventeen clusters were classified as Satellite DNA (82,666 reads). One cluster each was classified as 45S/28S (9,230 reads), 45S/18S (8,116 reads), and 5S (558 reads, and one assembled sequence of 4,161 bp in length (studied in detail below)) ribosomal DNA, respectively. RepeatExplorer also assembled the complete mitochondrial genome of *P. argus* (15,739 bp) that represented one cluster containing 4,230 reads. A detailed analysis of purifying selection and phylogenomic informativeness of protein coding genes in the mitochondrial genome of *P. argus* (using a smaller dataset compared to that used in this manuscript) has recently been published (Baeza, 2018).

Overall, this analysis revealed that a large part of the repeat element clusters represent various families of LINES and Satellite DNA in the genome of *P. argus*. Repetitive elements such as LINES and LTRs have been shown to account for a large portion of the assembled genome in the few decapod crustaceans in which the repeatome has been explored (Tang et al., 2020 for the Chinese mitten crab *Eriocheir japonica sinensis*).

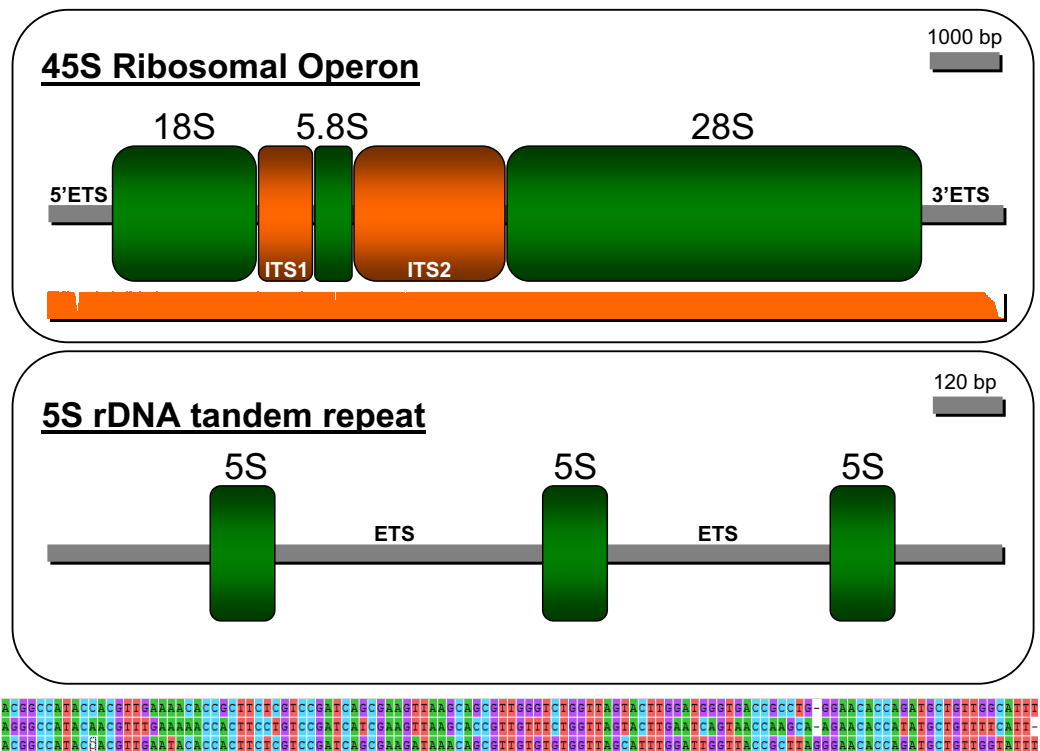


Figure 3 Depiction of the 45S ribosomal operon (above) and 5S unit tandem repeat (below) in the Caribbean spiny lobster *Panulirus argus*. The three sequences immediately below the depiction of the 5S tandem repeat are the three similar but different 5S genes.

Full-size DOI: [10.7717/peerj.10554/fig-3](https://doi.org/10.7717/peerj.10554/fig-3)

Nuclear ribosomal operon/tandem repeat in *Panulirus argus*

The strategy employed in this study permitted reconstructing the ribosomal operon in *P. argus* (GenBank accession: [MW252173](https://www.ncbi.nlm.nih.gov/nuccore/MW252173)) that comprises, in the following order, a 5' ETS (length = 707 bp), ssrDNA (1,875 bp), ITS1 (736 bp), 5.8S rDNA (162 bp), ITS2 (1,314 bp), lsrDNA (5,387 bp), and 3' ETS (287 bp (likely partial sequence)) (Fig. 3). The NNPP tool suggested the putative existence of a 50 bp promoter 5'-GTT GTT CTC TAA ATG ATA ACG CAC TAT CCC GGG GCG GCG C AG GAG CCG TT-3' (score 0.8), upstream of the 18S rDNA gene starting at position 162 of the assembled sequence. Note that the italic and bold nucleotide in the sequence above is the predicted transcription initiation site (TIS). The presence of a putative terminator (Sal box alike sequence: 5'-AGG TCG ACC AG[T/A] [A/T]NT CCG-3', see [Kuhn et al. \(1988\)](#)) was explored downstream of the 28S gene but not found likely because the 3' EST was only partially assembled. Interestingly, the motif 5'-AGG TCC GGA CAT ATG GTT CCG-3' (similar to the Sal box) was found starting at position 9391 of the assembled sequence, ~350 bp upstream of the 28S gene end as determined by RNAmmer. S1 nuclease mapping, among additional bench-work, is required to confirm this *in-silico* predictions. Mapping of the trimmed PE reads on the newly assembled rRNA operon indicated an overall alignment rate of 1.28%. Seven nuclear rDNA sequences available in Genbank were a close match to the de novo assembled rDNA operon of *P. argus* (*p*-distance 18S rDNA partial sequence

(1,872 bp in length, accession number: [U019182](#)) = 0.012; *p*-distance 18S rDNA complete sequence (1,872 bp, [AY743955](#)) = 0.014; *p*-distance 18S rDNA partial sequence (1,872 bp, [AY743955](#)) = 0.009; *p*-distance 5.8S rDNA partial sequence (385 bp, [AY210832](#)) = 0.021; *p*-distance 28S rDNA partial sequence (941, [AY210835](#)) = 0.02; *p*-distance 28S rDNA partial sequence (1,582 bp, [AY210834](#)) = 0.008; *p*-distance 28S rDNA partial sequence (2,282 bp, [AY210833](#)) \leq 0.001).

The sequence assembled by CAP3 and annotated as the 5S rDNA gene (GenBank accession: [MW251820](#)) in RepeatExplorer comprised three tandem-organized copies of the 5S unit as indicated by the software RNAMmer. The three copies in the tandem repeat assembly were not identical but all were a close match to each other (from 5' to 3' in the assembly, 1st vs 2nd copy *p*-value = 0.214; 2nd vs 3rd copy *p*-value = 0.111; 1st vs 3rd copy *p*-value = 0.248, see [Fig. 3](#) lower panel). The non-transcribed spacer (NTS) sequence between the first and second and the second and the third 5S units were 1,319 and 1,892 bp in length, respectively. Various SSRs but no transposable elements were found in these NTS sequences.

Studies on the structure and organization of both the nuclear ribosomal operon and the 5S rDNA gene are most rare in decapod crustaceans, including lobsters ([Vierna et al., 2013](#) and references therein, but see for example, the crab *Eriocheir sinensis* ([Yu et al., 2010](#)) for one of a few exceptions). In the higher eukaryotes, including arthropods, these two distinct gene families, the 45S and 5S ribosomal DNA genes, are organized in tandem arrays of a single, a few, or hundreds to thousands of copies that can be found on either one, a few, or several chromosome pairs ([Vierna et al., 2013](#)). Two distinct classes of 5S rDNA tandem repeats has been observed in some species and, depending upon the studied group, the same gene can or cannot be linked to other repetitive noncoding RNA or protein-coding gene families ([Vierna et al., 2013](#)). The newly described genomic organization of the ribosomal operon and 5S rDNA unit will serve as the base for future studies examining the evolution (i.e., concerted evolution vs birth-and-death models—[Nei & Rooney, 2005](#)) of these most relevant genomic elements in lobsters and other decapod crustaceans. This new information will also facilitate the development of new low pass sequencing + gene-targeted phylogenomic approaches (as an alternative or addition to for example, anchored hybrid enrichment ([Lemmon, Emme & Lemmon, 2012](#)) and ultra-conserved elements ([Faircloth et al., 2015](#))) to study the genealogical relationships within lobsters as well as among lobsters and other decapod crustaceans.

Microsatellite discovery in *Panulirus argus*

A total of 1,281 suitable SSR primer pairs ($N = 1012, 212, 48, 9,$ and 0 for 2mer, 3mer, 4mer, 5mer and 6mer SSRs motifs, respectively) were identified using the most stringent filtering options for finding SSRs in pal_finder ([Supplemental Materials, File S1](#)). A single previous study using a limited number of SSRs ($n = 11$) suggested a pattern of chaotic patchiness for *P. argus* in the Caribbean Sea ([Truelove et al., 2017](#)). Studies combining a subset of the SSRs identified here (after further development), nuclear SNPs ([Baeza, Umaña-Castro & Mejia-Ortiz, 2019](#)), and mitochondrial genomes ([Baeza, 2018](#)) can be used to assess population genetic/genomic connectivity in *P. argus* across its range of

distribution. Furthermore, these new resources will aid in answering questions relevant for the conservation and fisheries management of this species, including but not limited to determining kinship aggregations within populations, effective population sizes (Baeza, Childress & Ambrosio, 2018), recent migration rates, source and sink meta-population dynamics, as well as local adaptation (Oleksiak & Rajora, 2020).

CONCLUSION

This study developed genomic resources for the Caribbean spiny lobster *P. argus*, an ecologically relevant species in coral reefs and a target of the most profitable fishery in the greater Caribbean. Using low-pass short read Illumina sequencing, the genome size was estimated, nuclear repetitive elements were identified, partially classified, and quantified, and the ribosomal RNA operon and 5S rRNA DNA unit were assembled. A large set of SSRs was also detected. This information will contribute to the better understanding of meta-population connectivity and putative genomic mechanisms involved in the acclimatization and adaptation to climate change in *P. argus*.

ACKNOWLEDGEMENTS

JAB thanks Dr. Vince P. Richards for bioinformatics support. Drs. Cecilia Villacorta-Rath and Kareen E. Schnabel, as well as the handling editor, Dr. Joseph Pawlik, provided numerous comments that improved previous versions of this manuscript.

ADDITIONAL INFORMATION AND DECLARATIONS

Funding

The author received no funding for this work.

Competing Interests

The author declares that he has no competing interests.

Author Contributions

- J. Antonio Baeza conceived and designed the experiments, performed the experiments, analyzed the data, prepared figures and/or tables, authored or reviewed drafts of the paper, and approved the final draft.

Field Study Permissions

The following information was supplied relating to field study approvals (i.e., approving body and any reference numbers):

Field collection was approved by FWCC (permit number: SAL-11-1319-SR).

Data Availability

The following information was supplied regarding data availability:

Sequences described here are accessible via GenBank: [MW252173](#) and [MW251820](#), BioProject ID: [PRJNA453553](#).

Sequences described are also available in the [Supplemental Files](#).

Supplemental Information

Supplemental information for this article can be found online at <http://dx.doi.org/10.7717/peerj.10554#supplemental-information>.

REFERENCES

- Baeza JA. 2018.** The complete mitochondrial genome of the Caribbean spiny lobster *Panulirus argus*. *Scientific Reports* **8**(1):17690 DOI [10.1038/s41598-018-36132-6](https://doi.org/10.1038/s41598-018-36132-6).
- Baeza JA. 2020.** A first genomic portrait of the Florida stone crab *Menippe mercenaria*: genome size, mitochondrial chromosome, and repetitive elements. Epub ahead of print 4 October 2020. *Marine Genomics* 100821 DOI [10.1016/j.margen.2020.100821](https://doi.org/10.1016/j.margen.2020.100821).
- Baeza JA, Simpson L, Ambrosio LJ, Mora N, Childress M. 2016.** Active parental care, reproductive performance, and a novel egg predator affecting reproductive investment in the Caribbean spiny lobster *Panulirus argus*. *BMC Zoology* **1**(1):6 DOI [10.1186/s40850-016-0006-6](https://doi.org/10.1186/s40850-016-0006-6).
- Baeza JA, Childress MJ, Ambrosio LJ. 2018.** Chemical sensing of microhabitat by pueruli of the reef-dwelling Caribbean spiny lobster *Panulirus argus*: testing the importance of red algae, juveniles, and their interactive effect. *Bulletin of Marine Science* **94**(3):603–618 DOI [10.5343/bms.2017.1132](https://doi.org/10.5343/bms.2017.1132).
- Baeza JA, MacManes M. 2020.** De novo assembly and functional annotation of the heart + hemolymph transcriptome in the Caribbean spiny lobster *Panulirus argus*. *Marine Genomics* **54**:100783 DOI [10.1016/j.margen.2020.100783](https://doi.org/10.1016/j.margen.2020.100783).
- Baeza JA, Umaña-Castro R, Mejia-Ortiz LM. 2019.** Historical demography of the Caribbean spiny lobster *Panulirus argus* (Latreille, 1804)(Decapoda: Achelata: Palinuridae) in the Florida Keys, USA inferred using single nucleotide polymorphisms (SNPs). *Journal of Crustacean Biology* **39**(4):378–385 DOI [10.1093/jcbiol/ruz019](https://doi.org/10.1093/jcbiol/ruz019).
- Behringer DC, Butler MJ IV, Herrnkind WF, Hunt JH, Acosta CA, Sharp WC. 2009.** Is seagrass an important nursery habitat for the Caribbean spiny lobster, *Panulirus argus*, in Florida? *New Zealand Journal of Marine and Freshwater Research* **43**(1):327–337 DOI [10.1080/00288330909510003](https://doi.org/10.1080/00288330909510003).
- Bengtsson-Palme J, Ryberg M, Hartmann M, Branco S, Wang Z, Godhe A, De Wit P, Sanchez-Garcia M, Ebersberger I, De Sousa F, Amend AS. 2013.** Improved software detection and extraction of ITS1 and ITS2 from ribosomal ITS sequences of fungi and other eukaryotes for analysis of environmental sequencing data. *Methods in Ecology and Evolution* **4**:914e919.
- Bertelsen RD, Hornbeck J. 2009.** Using acoustic tagging to determine adult spiny lobster (*Panulirus argus*) movement patterns in the Western Sambo Ecological Reserve (Florida, United States). *New Zealand Journal of Marine and Freshwater Research* **43**(1):35–46 DOI [10.1080/00288330909509980](https://doi.org/10.1080/00288330909509980).
- Chen S, Zhou Y, Chen Y, Gu J. 2018.** Fastp: an ultra-fast all-in-one FASTQ preprocessor. *Bioinformatics* **34**(17):i884–i890 DOI [10.1093/bioinformatics/bty560](https://doi.org/10.1093/bioinformatics/bty560).
- Childress MJ, Herrnkind WF. 1996.** The ontogeny of social behaviour among juvenile Caribbean spiny lobsters. *Animal Behaviour* **51**(3):675–687 DOI [10.1006/anbe.1996.0071](https://doi.org/10.1006/anbe.1996.0071).
- Childress MJ, Herrnkind WF. 1997.** Den sharing by juvenile Caribbean spiny lobsters (*Panulirus argus*) in nursery habitat: cooperation or coincidence? *Marine and Freshwater Research* **48**(8):751–758 DOI [10.1071/MF97158](https://doi.org/10.1071/MF97158).
- De Grave S, Pentcheff ND, Ahyong ST, Chan T-Y, Crandall KA, Dworschak PC, Felder DL, Feldmann RM, Franssen CHJM, Goulding LYD, Lemaitre R, Low MEY, Martin JW, Ng PKL,**

- Schweitzer CE, Tan SH, Tshudy D, Wetzler RA. 2009. Classification of living and fossil genera of decapod crustaceans. *Raffles Bulletin of Zoology* 21:1–109.
- Edgar RC. 2004. MUSCLE: multiple sequence alignment with high accuracy and high throughput. *Nucleic Acids Research* 32(5):1792–1797 DOI 10.1093/nar/gkh340.
- Faircloth BC, Branstetter MG, White ND, Brady SG. 2015. Target enrichment of ultraconserved elements from arthropods provides a genomic perspective on relationships among Hymenoptera. *Molecular Ecology Resources* 15(3):489–501 DOI 10.1111/1755-0998.12328.
- Goldstein JS, Matsuda H, Takenouchi T, Butler MJ IV. 2008. The complete development of larval Caribbean spiny lobster *Panulirus argus* (Latreille, 1804) in culture. *Journal of Crustacean Biology* 28(2):306–327 DOI 10.1651/0278-0372(2008)028[0306:TCDOLC]2.0.CO;2.
- Griffiths SM, Fox G, Briggs PJ, Donaldson IJ, Hood S, Richardson P, Leaver GW, Truelove NK, Preziosi RF. 2016. A galaxy-based bioinformatics pipeline for optimised, streamlined microsatellite development from Illumina next-generation sequencing data. *Conservation Genetics Resources* 8(4):481–486 DOI 10.1007/s12686-016-0570-7.
- Higgs ND, Newton J, Attrill MJ. 2016. Caribbean spiny lobster fishery is underpinned by trophic subsidies from chemosynthetic primary production. *Current Biology* 26(24):3393–3398 DOI 10.1016/j.cub.2016.10.034.
- Holthuis LB. 1991. *FAO species catalogue. Vol 13. Marine lobsters of the world. An annotated and illustrated catalogue of species of interest to fisheries known to date in FAO fisheries synopsis.* Rome: FAO.
- Huang X, Madan A. 1999. CAP3: a DNA sequence assembly program. *Genome Research* 9(9):868–877 DOI 10.1101/gr.9.9.868.
- Hubley R, Finn RD, Clements J, Eddy SR, Jones TA, Bao W, Smit AF, Wheeler TJ. 2016. The Dfam database of repetitive DNA families. *Nucleic Acids Research* 44(D1):D81–D89 DOI 10.1093/nar/gkv1272.
- Jain M, Koren S, Miga KH, Quick J, Rand AC, Sasani TA, Tyson JR, Beggs AD, Dilthey AT, Fiddes IT, Malla S, Marriott H, Nieto T, O’Grady J, Olsen HE, Pedersen BS, Rhie A, Richardson H, Quinlan AR, Snutch TP, Tee L, Paten B, Phillippy AM, Simpson JT, Loman NJ, Loose M. 2018. Nanopore sequencing and assembly of a human genome with ultra-long reads. *Nature Biotechnology* 36(4):338–345 DOI 10.1038/nbt.4060.
- Jimenez AG, Kinsey ST, Dillaman RM, Kapraun DF. 2010. Nuclear DNA content variation associated with muscle fiber hypertrophic growth in decapod crustaceans. *Genome* 53(3):161–171 DOI 10.1139/G09-095.
- Kalvari I, Argasinska J, Quinones-Olvera N, Nawrocki EP, Rivas E, Eddy SR, Bateman A, Finn RD, Petrov AI. 2018. Rfam 13.0: shifting to a genome-centric resource for non-coding RNA families. *Nucleic Acids Research* 46(D1):D335–D342 DOI 10.1093/nar/gkx1038.
- Kozma MT, Schmidt M, Ngo-Vu H, Sparks SD, Senatore A, Derby CD. 2018. Chemoreceptor proteins in the Caribbean spiny lobster, *Panulirus argus*: expression of ionotropic receptors, gustatory receptors, and TRP channels in two chemosensory organs and brain. *PLOS ONE* 13(9):e0203935 DOI 10.1371/journal.pone.0203935.
- Kuhn A, Normann A, Bartsch I, Grummt I. 1988. The mouse ribosomal gene terminator consists of three functionally separable sequence elements. *EMBO Journal* 7(5):1497–1502 DOI 10.1002/j.1460-2075.1988.tb02968.x.
- Kumar S, Stecher G, Li M, Knyaz C, Tamura K. 2018. MEGA X: molecular evolutionary genetics analysis across computing platforms. *Molecular Biology and Evolution* 35(6):1547–1549 DOI 10.1093/molbev/msy096.

- Lagesen K, Hallin PF, Rødland E, Stærfeldt HH, Rognes T, Ussery DW. 2007. RNAmmer: consistent annotation of rRNA genes in genomic sequences. *Nucleic Acids Research* 35:3100–3108.
- Langmead B, Salzberg SL. 2012. Fast gapped-read alignment with Bowtie 2. *Nature Methods* 9(4):357–359 DOI 10.1038/nmeth.1923.
- Lemmon AR, Emme SA, Lemmon EM. 2012. Anchored hybrid enrichment for massively high-throughput phylogenomics. *Systematic Biology* 61(5):727–744 DOI 10.1093/sysbio/sys049.
- Lewis JB, Moore HB, Babis W. 1952. The post-larval stages of the spiny lobster *Panulirus argus*. *Bulletin of Marine Science* 2:324–337.
- Lozano-Fernandez J, Giacomelli M, Fleming JF, Chen A, Vinther J, Thomsen PF, Glenner H, Palero F, Legg DA, Iliffe TM, Pisani D, Olesen J. 2019. Pancrustacean evolution illuminated by taxon-rich genomic-scale data sets with an expanded remipede sampling. *Genome Biology and Evolution* 11(8):2055–2070 DOI 10.1093/gbe/evz097.
- Marçais G, Kingsford C. 2011. A fast, lock-free approach for efficient parallel counting of occurrences of k-mers. *Bioinformatics* 27(6):764–770 DOI 10.1093/bioinformatics/btr011.
- Masella AP, Bartram AK, Truszkowski JM, Brown DG, Neufeld JD. 2012. PANDAseq: paired-end assembler for illumina sequences. *BMC Bioinformatics* 13(1):31 DOI 10.1186/1471-2105-13-31.
- Maxwell KE, Matthews TR, Bertelsen RD, Derby CD. 2009. Using age to evaluate reproduction in Caribbean spiny lobster, *Panulirus argus*, in the Florida Keys and Dry Tortugas, United States. *New Zealand Journal of Marine and Freshwater Research* 43(1):139–149 DOI 10.1080/00288330909509988.
- Nei M, Rooney AP. 2005. Concerted and birth-and-death evolution of multigene families. *Annual Review of Genetics* 39(1):121–152 DOI 10.1146/annurev.genet.39.073003.112240.
- Novak P, Neumann P, Pech J, Steinhaisl J, Macas J. 2013. RepeatExplorer: a galaxy-based web server for genome-wide characterization of eukaryotic repetitive elements from next generation sequence reads. *Bioinformatics* 29(6):792–793 DOI 10.1093/bioinformatics/btt054.
- Novak P, Neumann P, Macas J. 2020. Global analysis of repetitive DNA from unassembled sequence reads using RepeatExplorer2. *Nature Protocols* 15:1–32.
- Oleksiak MF, Rajora OP. 2020. Marine population genomics: challenges and opportunities. In: Oleksiak MF, Rajora OP, eds. *Population Genomics: Marine Organisms*. Berlin: Springer Nature, 3–35.
- Phillips BF, Booth JD, Cobb JS, Jeffs AG, McWilliam P. 2006. Larval and postlarval ecology. In: Phillips BF, ed. *Lobsters: Biology, Management, Aquaculture, and Fisheries*. Oxford: Blackwell, 231–262.
- Ranallo-Benavidez TR, Jaron KS, Schatz MC. 2020. GenomeScope 2.0 and smudgeplot for reference-free profiling of polyploid genomes. *Nature Communications* 11(1):1–10 DOI 10.1038/s41467-020-14998-3.
- Rang FJ, Kloosterman WP, De Ridder J. 2018. From squiggle to basepair: computational approaches for improving nanopore sequencing read accuracy. *Genome Biology* 19(1):90 DOI 10.1186/s13059-018-1462-9.
- Reese MG. 2001. Application of a time-delay neural network to promoter annotation in the *Drosophila melanogaster* genome. *Computers & Chemistry* 26(1):51–56 DOI 10.1016/S0097-8485(01)00099-7.
- Rhoads A, Au KF. 2015. PacBio sequencing and its applications. *Genomics, Proteomics & Bioinformatics* 13(5):278–289 DOI 10.1016/j.gpb.2015.08.002.

- Subramaniam K, Behringer DC, Bojko J, Yutin N, Clark AS, Bateman KS, Van Aerle R, Bass D, Kerr RC, Koonin EV, Stentiford GD. 2020.** A new family of DNA viruses causing disease in crustaceans from diverse aquatic biomes. *Mbio* **11**(1):284 DOI [10.1128/mBio.02938-19](https://doi.org/10.1128/mBio.02938-19).
- Tang B, Wang Z, Liu Q, Zhang H, Jiang S, Li X, Wang Z, Sun Y, Sha Z, Jiang H, Wu X, Ren Y, Li H, Xuan F, Ge B, Jiang W, She S, Sun H, Qiu Q, Wang W, Wang Q, Qiu G, Zhang D, Li Y. 2020.** High-quality genome assembly of eriocheir japonica sinensis reveals its unique genome evolution. *Frontiers Genetics* **10**:1340 DOI [10.3389/fgene.2019.01340](https://doi.org/10.3389/fgene.2019.01340).
- Truelove NK, Kough AS, Behringer DC, Paris CB, Box SJ, Preziosi RF, Butler MJ. 2017.** Biophysical connectivity explains population genetic structure in a highly dispersive marine species. *Coral Reefs* **36**(1):233–244 DOI [10.1007/s00338-016-1516-y](https://doi.org/10.1007/s00338-016-1516-y).
- Untergasser A, Cutcutache I, Koressaar T, Ye J, Faircloth BC, Remm M, Rozen SG. 2012.** Primer3—new capabilities and interfaces. *Nucleic Acids Research* **40**(15):e115 DOI [10.1093/nar/gks596](https://doi.org/10.1093/nar/gks596).
- Vierna J, Wehner S, Siederdissen CH, Martínez-Lage A, Marz M. 2013.** Systematic analysis and evolution of 5S ribosomal DNA in metazoans. *Heredity* **111**(5):410–421 DOI [10.1038/hdy.2013.63](https://doi.org/10.1038/hdy.2013.63).
- Yu J-H, Li H-X, Ge X-P, Li J-L, Tang Y-K. 2010.** Characteristics analysis of complete ribosomal DNA sequence in Chinese mitten crab (*Eriocheir sinensis*). *Journal of Fisheries of China* **34**(5):696–703 DOI [10.3724/SP.J.1231.2010.06659](https://doi.org/10.3724/SP.J.1231.2010.06659).