

Artificial Embryo

FHSM VP-14845 (Tsp.)

FHSM VP-9350 (Tk)

FMNH UR902 (Tp)

AMNH FARB 1592 (Tp)

AMNH FARB 1565* (Tn)

RMM 5610 (Tp)

KUVP 66129 (Tp)

AMNH FARB 4909 (Tp)

KUVP 1033 (Tp)

KUVP 28705 (Tp)

FGM V-43 (Tk)

FHSM VP-2295* (Tk)

FHSM VP-15632 (Tk)

FHSM VP-78 (Tk)

FHSM VP-15631 (Tk)

FHSM VP-2495 (Tk)

YPM 3974 (Tn)

AMNH FARB 124/134 (Tn)

FHSM VP-2209 (Tn)

FHSM VP-7262 (Tn)

FMNH PR2103 (Tk)

KUVP 1032 (Tp)

KUVP 50090 (Tp)

USNM 8898 (Tp)

FFHM 1997-10 (Tp)

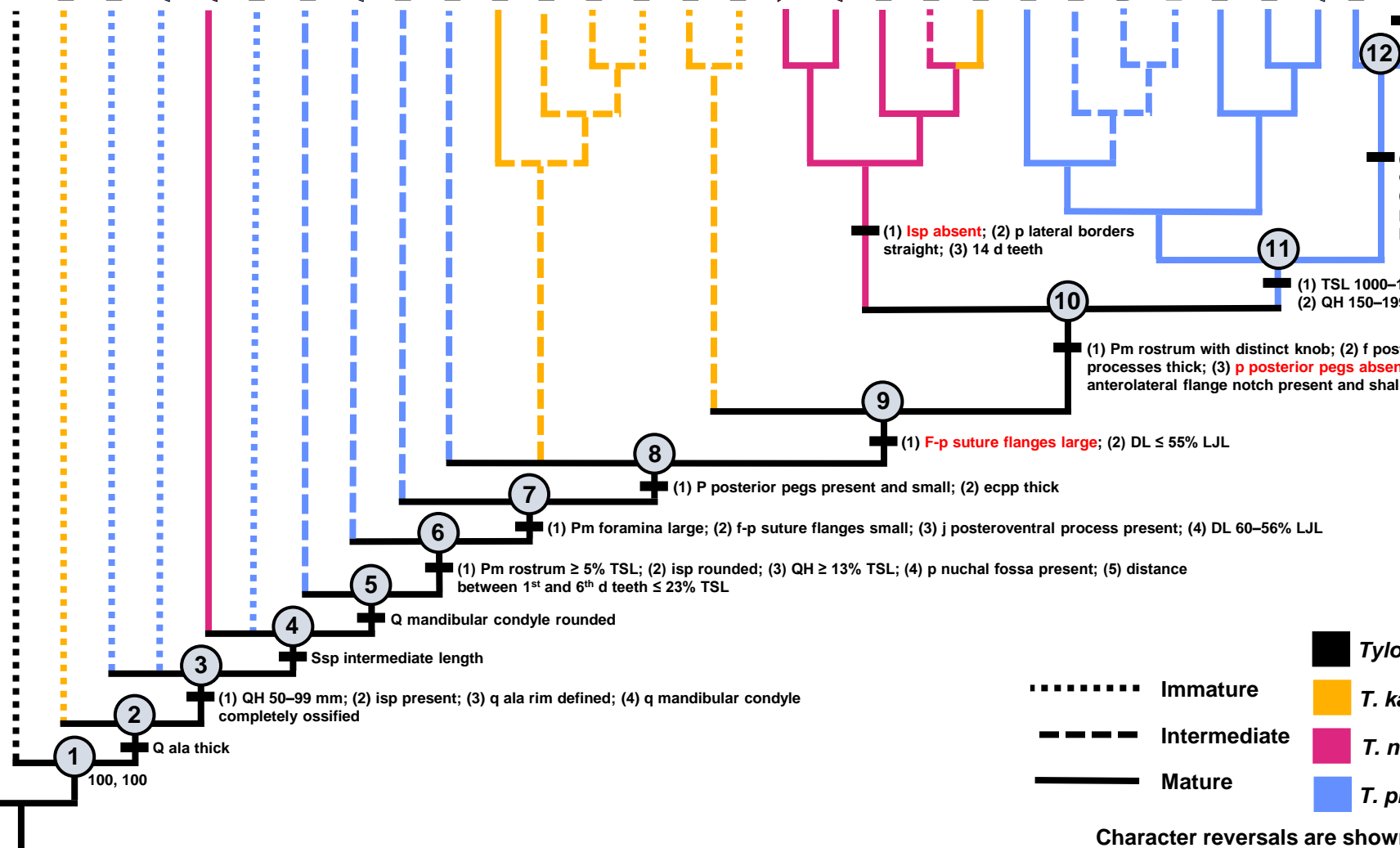
FMNH P15144 (Tp)

ROM 7906 (Tp)

AMNH FARB 221 (Tp)

FHSM VP-3 (Tp)

KUVP 5033 (Tp)



(1) TSL ≥ 1500 mm;
(2) QH ≥ 200 mm

(1) Q alar concavity deep;
(2) cr posteroventral process fan-like

(1) **Isp absent**; (2) p lateral borders straight; (3) 14 d teeth

(1) TSL 1000–1499 mm;
(2) QH 150–199 mm

(1) Pm rostrum with distinct knob; (2) f posterolateral processes thick; (3) **p posterior pegs absent**; (4) cr anterolateral flange notch present and shallow

(1) **F-p suture flanges large**; (2) DL ≤ 55% LJJ

(1) P posterior pegs present and small; (2) ecpp thick

(1) Pm foramina large; (2) f-p suture flanges small; (3) j posteroventral process present; (4) DL 60–56% LJJ

(1) Pm rostrum ≥ 5% TSL; (2) isp rounded; (3) QH ≥ 13% TSL; (4) p nuchal fossa present; (5) distance between 1st and 6th d teeth ≤ 23% TSL

Q mandibular condyle rounded

Ssp intermediate length

(1) QH 50–99 mm; (2) isp present; (3) q ala rim defined; (4) q mandibular condyle completely ossified

Q ala thick

100, 100

..... Immature

----- Intermediate

————— Mature

Tylosaurus sp.

T. kansasensis

T. nepaeolicus

T. proriger

Character reversals are shown in red.